

powertank.co.uk



OVERVIEW

POWERTANK *Water Boosting Systems*

by Pedrollo Distribution



CONTENTS

About	4
Range Options	5
Compact - 125ltr	7
CAT5 - 10 or 38ltr	8
DG PED - 200ltr	9
Simplicity	10
Slimline - 200, 350 & 450ltr	11
Coffin - 200, 270, 340 & 450ltr	12
Rectangular - 300 & 500ltr	13
Utility - 500 & 750ltr	14
Utility - 650 & 1000ltr	15
Industrial	16
Bunded - 250 & 650ltr	18
Water Treatment	19
Assist Tanks	21
Optional Extras	22
Installation Guide	23

POWERTANK Water Boosting Systems



 **POWERTANK
COMPACT**
125LTR



 **POWERTANK
CAT5**
10 & 38LTR



 **POWERTANK
DG PED**
200LTR



 **POWERTANK
SIMPLICITY**
200 - 450LTR



 **POWERTANK
SLIMLINE**
200, 350 & 450LTR



 **POWERTANK
COFFIN**
200, 270, 340 & 450LTR



 **POWERTANK
RECTANGULAR**
300 & 500LTR



 **POWERTANK
UTILITY**
500 & 750LTR



 **POWERTANK
UTILITY**
650 & 1000LTR



 **POWERTANK
INDUSTRIAL**
500 - 5000LTR



 **POWERTANK
BUNDED**
250 & 650LTR



 **POWERTANK
WATER TREATMENT**
UV & SOFTENERS

ABOUT POWERTANK

› **Need to boost your water pressure?**

There are many reasons for experiencing low water pressure problems including high demand, location and shared supply. The Powertank range is a self-contained cold water booster system specifically designed for use in domestic, commercial, agricultural & industrial applications where existing water pressure and flow is insufficient to meet demand. The range caters for multiple space and storage capacity requirements.

› **Why do I need a tank and a pump?**

To increase water flow there must first be more water. If your mains supply is not meeting your requirements, then you need a break tank to store your own water supply ready for when you need it. This can then be pumped to your outlets on demand giving you a plentiful supply of water at the right pressure.

› **Can this be used with any type of hot water system?**

Powertanks are suitable for use with pressurised/unvented & combination boiler hot water systems and are not designed for use with unpressurised/vented /gravity fed systems where a cold water header tank already exists.

› **Why can't I just fit a pump onto the mains?**

Water Authority bylaws prevent a pump being directly connected to the mains supply, so when your mains water pressure needs a boost, a break tank must be incorporated into the system. There is an exemption for pumps 'up to' 12 ltr/min but this is not guaranteed and relies on your mains being capable of delivering this volume. To put this into context, a single shower typically requires between 9-15 ltr/min.

› **Will it be noisy?**

All pumps create noise, but by incorporating an ultra-quiet running submersible pump within a tank unit, the Powertank range is about as quiet as you can get. Typical dB of <65dB(A)

› **Volumes**

All stated volumes are usable water volumes.

› **Is it easy to install?**

Our all-in-one tank and pump unit is designed to remove the headache for installers. It is a packaged unit and therefore is fast and easy to install. See our Installation Guideline for step by step instructions.

› **Where am I going to put it?**

The Powertank range has been designed to provide the end user with a variety of options in terms of water storage and usage requirements as well as availability of space. Typical installation areas include garages, plant rooms, utility rooms and kitchens.

› **What is the difference between the fixed speed and the variable speed version?**

The fixed speed version has an automatic pump controller which provides the full performance of the pump on demand.

The variable speed version has an intelligent pump controller that will supply a smooth flow of water to every outlet by maintaining constant pressure throughout your property, speeding up and slowing down the pump to suit demand. This ensures efficient operation of the pump leading to reduced energy usage and a smoother user experience.

› **What size property will this supply?**

The Powertank range is scalable and additional capacity can be added for large properties or those with particularly poor incoming flow rates. We have designed the range to fit in all domestic and commercial properties (incoming flow rate and required usage must be taken into consideration). If you have a weak incoming water supply yet a high demand for water, you also have the option to link an additional 'assist tank' to ensure you have enough stored water to meet demand.

› **What if my tank runs out of water?**

The controller will turn off the pump if there is no water in the tank. It will automatically reset after a short delay allowing the water volume in the tank to recover. This pump protection feature ensures a long and happy life for the pump.



Increased Water Pressure & Flow



Ease of Installation



Compact Design



Dry Run Protection



Quiet & Reliable



Marked Product

RANGE OPTIONS

CONTROLS OPTIONS

Fixed Speed

This is the most economical option and will transform the water pressure and flow in your property. This will deliver the full pressure of the pump at the in use flow rate (see performance table).

Variable Speed

The variable speed option allows you to choose your desired pressure, speeding up and slowing down to suit demand. Whatever you are doing, from washing up, watering the garden, having a shower or all 3 together the pressure will continue to be the same to give you a constant pressure at every outlet.

INCREASE PERFORMANCE

Variable - TWIN & TRIPLE Pump Option

For higher flow rates the Powertanks can be fitted with two or three pumps to meet the required duty. Twin & Triple pump sets are configured as duty assist with two or three pumps sharing the duty.

Twin pump options are available from 500ltr tank capacity and Triple pump options are available from 2000ltr tank capacity.

These operate with the same functionality as a traditional booster set.

Variable PLUS – More Powerful Pump Option

For certain applications a larger flow rate maybe required. The PLUS range can offer a much higher flow rate than the Standard Variable Speed unit and is a more cost effective way of increasing the performance of the Powertank system without upgrading to a twin or triple pump system. This PLUS pump option is available on our larger tanks options.



RANGE PERFORMANCE

Pump Option	Power			Pressure	1 Bar	2 Bar	3 Bar	4 Bar	5 Bar	6 Bar
	kW	HP	A							
Fixed Speed	0.55	0.75	3.4		73	57	40	10	-	-
Variable Speed	0.75	1	6.3		80	80	80	68	50	14
Variable Speed (Compact Model)	0.55	0.75	5.2		80	80	66	40	-	-
Variable Speed PLUS	1.5	2	8.7	Q l/min	160	160	138	107	50	-
Variable Speed TWIN	1.5	2	12.6		160	160	160	136	100	28
Variable Speed TRIPLE	2.25	3	18.9		240	240	240	204	150	42
Variable Speed DG-PED 3	0.75	1	7.5		80	70	58	45	35	-
Variable Speed DG-PED 5	1.1	1.5	10.5		120	105	92	75	60	-

AIR GAPS EXPLAINED

Fluid Category 4 / Type AF

Suitable for applications in commercial heating systems, bottle washing, commercial dish-washing machines, brewery and distillations plants.

CAT4

Fluid Category 5 / Type AB

Suitable for applications where increased backflow protection is required such as applications in food washing & packing stations, abattoirs, hygienic rooms, surgeries and laboratories. This is an optional upgrade.

CAT5



POWERTANK **COMPACT 125LTR**

The Powertank Compact has been specifically designed for smaller properties with low water pressure and flow and where space is at a premium i.e. apartments, cottages, townhouses. Fitting into the space of a standard kitchen unit, the Powertank Compact is a similar size to a washing machine so can be hidden away behind a cupboard door. The electronic controller automatically starts and stops the pump when a drop in pressure is sensed i.e. a tap is opened and closed.

KEY FEATURES

- Non-corrosive holding tank (WRAS approved material)
- Pre-fitted WRAS approved fill valve
- Integral overflow weir
- Minimal installation required
- Adjustable digital display flow controller (Variable Speed Option)
- Dry-run protection with auto restart (time delay)
- AB Air gap
- Suitable up to Fluid Category 5

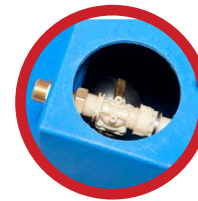


SYSTEM CONNECTIONS

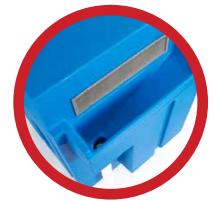
Connection	Size
Inlet	½" BSP
Outlet	1" BSP
Overflow	40mm Waste pipe
Drain Off	1" BSP



Variable Speed Option



Fill Valve



Integral Overflow Weir

Pump Option	Power			Pressure	1 Bar	2 Bar	3 Bar	4 Bar	5 Bar	6 Bar
	kW	HP	A		Q l/min					
Fixed Speed	0.55	0.75	3.4		73	57	40	10	-	-
Variable Speed (Compact Model)	0.55	0.75	5.2		80	80	66	40	-	-

RANGE OPTIONS

Model	L (mm)	W (mm)	H (mm)	Weight (kg)
125ltr Compact Fixed Speed	560	490	850	27
125ltr Compact Variable Speed	560	490	850	33

Power Supply	240v 50Hz
Mains Cable	2 mtr fitted with 13 amp fuse mains plug
Access Cover	168mm Ø
Tank Weight Full	1ltr = 1 kg plus weight of empty tank



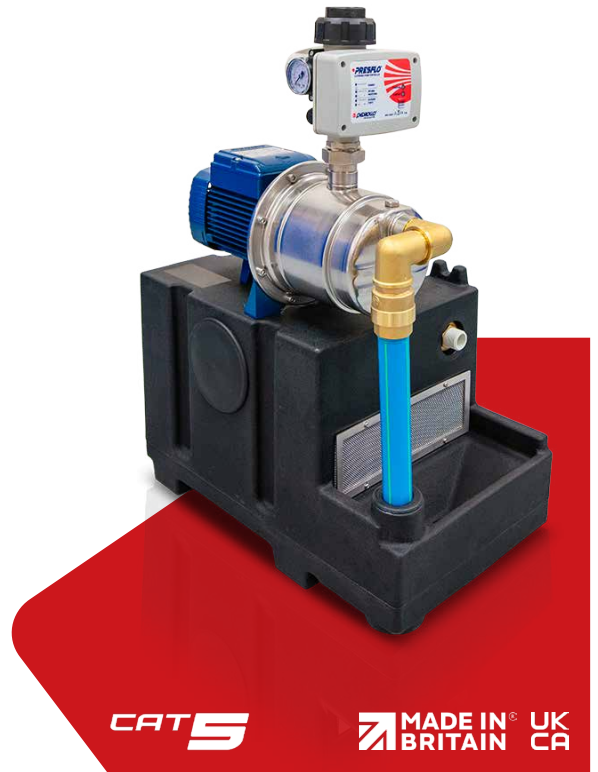
POWER TANK CAT5 10 OR 38LTR

The Powertank CAT 5 provides backflow protection for fluid category 5 risks. Our system includes a type AB air-gap and is available with either a 10ltr or 38ltr tank. We supply this tank with a self-priming jet pump to ensure smooth operation. The electronic controller automatically starts and stops the pump when a drop in pressure is sensed i.e. a tap is opened and closed.

KEY FEATURES

- Non-corrosive holding tank
- Pre-fitted WRAS approved fill valve
- Integral screened overflow weir
- Minimal installation requirement
- Dry-run protection with auto restart (time delay)
- Self-priming Jet Pump
- AB Air gap
- Suitable up to Fluid Category 5

* Powertank Compact also suitable for Fluid Category 5



SYSTEM CONNECTIONS

Connection	Size
Inlet	3/4" BSP
Outlet	1" BSP
Overflow	40mm Waste pipe

Pump Option	Power			Pressure	1 Bar	2 Bar	3 Bar	4 Bar	5 Bar	6 Bar
	kW	HP	A							
JCRm1C	0.37	0.5	3.4	Q l/min	60	25	5	-	-	-

RANGE OPTIONS

Model	L (mm)	W (mm)	H (mm)	Weight (kg)
10ltr CAT 5 Fixed Speed	500	300	670	14
38ltr CAT 5 Fixed Speed	500	300	920	20

Power Supply	240v 50Hz
Mains Cable	2 mtr fitted with 13 amp fuse mains plug
Pump	JCRm1C
Tank Weight Full	1ltr = 1 kg plus weight of empty tank



POWERTANK **DG PED 3 & DG PED 5 200LTR**

The Powertank DG PED systems are variable speed pump and tank units designed with the consumer in mind. A simple push button interface with LED display provides 2 options; '+' to increase pressure and '-' to decrease pressure making it very difficult to hinder the operation of the unit. Like all the other Powertanks in the range it automatically starts and stops the pump when a drop in pressure is sensed i.e a tap is opened and closed.

KEY FEATURES

- Non-corrosive holding tank (WRAS approved material)
- Pre-fitted WRAS approved fill valve
- Minimal installation requirement
- Adjustable digital display flow controller
- Dry-run protection with auto restart (time delay)
- AF Air gap (AB Air gap Optional)
- Suitable up to Fluid Category 4 (CAT5 Option available)



SYSTEM CONNECTIONS

Connection	Size
Inlet	½" BSP
Outlet	1" BSP
Overflow	1¼" (40mm) female waste - pipe compression fitting
Drain Off	1" BSP



Intuitive User Interface



Rotating Inlet/Outlet Connector

Pump Option	Power			Pressure	1 Bar	2 Bar	3 Bar	4 Bar	5 Bar	6 Bar
	kW	HP	A							
Variable Speed DG PED 3	0.75	1	7.5	Q l/min	80	70	58	45	35	-
Variable Speed DG PED 5	1.1	1.5	10.5		120	105	92	75	60	-

RANGE OPTIONS

Model	L (mm)	W (mm)	H (mm)	Weight (kg)
200ltr Variable Speed DG PED 3	512	570	1211	27
200ltr Variable Speed DG PED 5	512	570	1211	33

Power Supply	240v 50Hz
Mains Cable	2 mtr fitted with 13 amp fuse mains plug
Access Cover	-
Tank Weight Full	1ltr = 1 kg plus weight of empty tank



The Simplicity range is designed as an entry level Powertank offering.

Our Simplicity Range is only available as a fixed speed option. The Simplicity range includes: 200ltr & 350ltr Slimline, 500ltr Utility, 200ltr, 270ltr, 340ltr, and 450ltr Coffin tanks.

It is electronically controlled, starting and stopping the pump automatically when pressure drops below 1.5 Bar

Unlike the standard Fixed Speed Powertank the Simplicity range controller does not include an integrated 3ltr pressure vessel for reducing the number of pump start & stops and does not have an adjustable start pressure feature.

KEY FEATURES

- Non-corrosive holding tank (WRAS approved material)
- Pre-fitted WRAS approved fill valve
- Minimal installation requirement
- Built-in electronic start/stop
- Dry-run protection with auto restart (time delay)
- AF Air gap
- Suitable up to Fluid Category 4

SYSTEM CONNECTIONS

Connection	Size
Inlet	½" BSP
Outlet	1" BSP
Overflow	1¼" (40mm) female waste - pipe compression fitting
Drain Off	1" BSP

Pump Option	Power			Pressure	1 Bar	2 Bar	3 Bar	4 Bar	5 Bar	6 Bar
	kW	HP	A							
Fixed Speed	0.55	0.75	3.4	Q l/min	73	57	40	10	-	-

RANGE OPTIONS

Model	L (mm)	W (mm)	H (mm)	Weight (kg)
200ltr Slimline Simplicity Fixed Speed	584	584	1190	26
350ltr Slimline Simplicity Fixed Speed	584	584	1656	29
500ltr Utility Simplicity Fixed Speed	760	760	1393	34
200ltr Coffin Simplicity Fixed Speed	1106	475	770	30
270ltr Coffin Simplicity Fixed Speed	1571	475	751	32
340ltr Coffin Simplicity Fixed Speed	1571	475	980	34
450ltr Coffin Simplicity Fixed Speed	1765	580	846	36

Power Supply	240v 50Hz
Mains Cable	2 mtr fitted with 13 amp fuse mains plug
Access Cover	190mm (S) 300x450mm (C) 285mm (U)
Tank Weight Full	1ltr = 1 kg plus weight of empty tank



Fixed Speed Only



Overflow - Inlet



POWER TANK SLIMLINE 200, 350 & 450LTR

The Powertank Slimline range can fit through a standard doorway. This makes it very convenient for new or existing properties as it can be easily fitted under a stairs, in a garage, or in a utility room.

The slimline range is ideal for 3 - 5 bedroom houses, with poor water pressure and flow, and where floor space is limited. It is electronically controlled, starting and stopping the pump automatically when an outlet is opened and closed.

KEY FEATURES

- Non-corrosive holding tank (WRAS approved material)
- Pre-fitted WRAS approved fill valve
- Minimal installation requirement
- Adjustable digital display flow controller (Variable Speed Option)
- Dry-run protection with auto restart (time delay)
- AF Air gap (AB Air gap optional)
- Suitable up to Fluid Category 4 (CAT 5 Optional)



SYSTEM CONNECTIONS

Connection	Size
Inlet	½" BSP
Outlet	1" BSP
Overflow	1¼" (40mm) female waste - pipe compression fitting
Drain Off	1" BSP



Variable Speed Option



Overflow - Inlet



AB Air Gap Option
CAT5

Pump Option	Power			Pressure	1 Bar	2 Bar	3 Bar	4 Bar	5 Bar	6 Bar
	kW	HP	A							
Fixed Speed	0.55	0.75	3.4	Q l/min	73	57	40	10	-	-
Variable Speed	0.75	1	6.3		80	80	80	68	50	14

RANGE OPTIONS

Model	L (mm)	W (mm)	H (mm)	Weight (kg)
200ltr Slimline Fixed Speed	584	584	1190	26
200ltr Slimline Variable Speed	584	584	1190	32
350ltr Slimline Fixed Speed	584	584	1656	29
350ltr Slimline Variable Speed	584	584	1656	35
450ltr Slimline Fixed Speed	584	584	2100	33
450ltr Slimline Variable Speed	584	584	2100	39

Power Supply	240v 50Hz
Mains Cable	2 mtr fitted with 13 amp fuse mains plug
Access Cover	190mm Ø
Tank Weight Full	1ltr = 1 kg plus weight of empty tank



POWERTANK **COFFIN 200, 270, 340 & 450LTR**

The Powertank Coffin range is designed for domestic and light commercial use where there is low mains water pressure and where pressure fluctuates.

It is electronically controlled, starting and stopping the pump automatically when an outlet is opened and closed. The Powertank Coffin tanks are designed for areas where height restrictions and access are an issue.

KEY FEATURES

- Non-corrosive holding tank (WRAS approved material)
- Pre-fitted WRAS approved fill valve
- Minimal installation requirement
- Adjustable digital display flow controller (Variable Speed Option)
- Dry-run protection with auto restart (time delay)
- AF Air gap
- Suitable up to Fluid Category 4



SYSTEM CONNECTIONS

Connection	Size
Inlet	½" BSP
Outlet	1" BSP
Overflow	1 ¼" (40mm) female waste - pipe compression fitting
Drain Off	1" BSP



Variable Speed Option Overflow - Inlet

Pump Option	Power			Pressure	1 Bar	2 Bar	3 Bar	4 Bar	5 Bar	6 Bar
	kW	HP	A							
Fixed Speed	0.55	0.75	3.4	Q l/min	73	57	40	10	-	-
Variable Speed	0.75	1	6.3		80	80	80	68	50	14

RANGE OPTIONS

Model	L (mm)	W (mm)	H (mm)	Weight (kg)
200ltr Coffin Fixed Speed	1106	475	770	30
200ltr Coffin Variable Speed	1106	475	770	37
270ltr Coffin Fixed Speed	1571	475	751	32
270ltr Coffin Variable Speed	1571	475	751	39
340ltr Coffin Fixed Speed	1571	475	980	34
340ltr Coffin Variable Speed	1571	475	980	40
450ltr Coffin Fixed Speed	1765	580	846	36
450ltr Coffin Variable Speed	1765	580	846	42

Power Supply	240v 50Hz
Mains Cable	2 mtr fitted with 13 amp fuse mains plug
Access Cover	300mm X 450mm
Tank Weight Full	1ltr = 1 kg plus weight of empty tank



POWER TANK RECTANGULAR 300 & 500LTR



The Powertank Rectangular range is designed for domestic and light commercial use where there is low mains water pressure and where pressure fluctuates.

It is electronically controlled, starting and stopping the pump automatically when an outlet is opened and closed. The 300ltr & 500ltr tanks are designed for areas where the floor space is not restricted but where height restrictions are an issue.

KEY FEATURES

- Non-corrosive holding tank (WRAS approved material)
- Pre-fitted WRAS approved fill valve
- Minimal installation requirement
- Adjustable digital display flow controller (Variable Speed Option)
- Dry-run protection with auto restart (time delay)
- AF Air gap (AB Air gap optional)
- Suitable up to Fluid Category 4 (CAT 5 Optional)



SYSTEM CONNECTIONS

Connection	Size
Inlet	½" BSP
Outlet	1" BSP
Overflow	1¼" (40mm) female waste - pipe compression fitting
Drain Off	1" BSP



Variable Speed Option Overflow - Inlet Twin Pump Option

Pump Option	Power			Pressure	1 Bar	2 Bar	3 Bar	4 Bar	5 Bar	6 Bar
	kW	HP	A							
Fixed Speed	0.55	0.75	3.4		73	57	40	10	-	-
Variable Speed	0.75	1	6.3	Q l/min	80	80	80	68	50	14
Variable Speed Twin	1.5	2	12.6		160	160	160	136	100	28

RANGE OPTIONS

Model	L (mm)	W (mm)	H (mm)	Weight (kg)
300ltr Rectangular Fixed Speed	1045	665	940	34
300ltr Rectangular Variable Speed	1045	665	940	39
500ltr Rectangular Fixed Speed	1190	727	1030	40
500ltr Rectangular Variable Speed	1190	727	1030	45
500ltr Rectangular Variable Speed Twin Pump	1190	727	1030	50

Power Supply	240v 50Hz
Mains Cable	2 mtr fitted with 13 amp fuse mains plug
Access Cover	300ltr = 190mm Ø 500ltr = 285mm Ø
Tank Weight Full	1ltr = 1 kg plus weight of empty tank



POWER TANK UTILITY 500 & 750LTR



The Powertank Utility range is designed for domestic and light commercial use where there is low mains water pressure and where pressure fluctuates.

It is electronically controlled, starting and stopping the pump automatically when an outlet is opened and closed. The Utility range is designed for areas where the floor space is not restricted. This range caters for a wider variation of tank options to suit a wider range of applications.

KEY FEATURES

- Non-corrosive holding tank (WRAS approved material)
- Pre-fitted WRAS approved fill valve
- Minimal installation requirement
- Dry-run protection with auto restart (time delay)
- Adjustable digital display flow controller (Variable Speed Option)
- AF Air gap (AB Air gap optional)
- Suitable up to Fluid Category 4 (CAT 5 Optional)



SYSTEM CONNECTIONS

Connection	Size
Inlet	½" BSP (¾" Optional)
Outlet	1" BSP
Overflow	1¼" (40mm) female waste - pipe compression fitting
Drain Off	1" BSP



Variable Speed Option



Overflow - Inlet



Twin Pump Option



AB Air Gap Option
CAT5

Pump Option	Power			Pressure	1 Bar	2 Bar	3 Bar	4 Bar	5 Bar	6 Bar
	kW	HP	A							
Fixed Speed	0.55	0.75	3.4	Q l/min	73	57	40	10	-	-
Variable Speed	0.75	1	6.3		80	80	80	68	50	14
Variable Speed Plus	1.5	2	8.7		160	160	138	107	50	-
Variable Speed Twin	1.5	2	12.6		160	160	160	136	100	28

RANGE OPTIONS

Model	L (mm)	W (mm)	H (mm)	Weight (kg)
500ltr Utility Fixed Speed	760	760	1393	34
500ltr Utility Variable Speed	760	760	1393	40
500ltr Utility Variable Speed Plus	760	760	1393	42
500ltr Utility Variable Speed Twin Pump	760	760	1393	45
750ltr Utility Fixed Speed	760	760	2113	49
750ltr Utility Variable Speed	760	760	2113	55
750ltr Utility Variable Speed Plus	760	760	2113	57
750ltr Utility Variable Speed Twin Pump	760	760	2113	60

Power Supply	240v 50Hz
Mains Cable	2 mtr fitted with 13 amp fuse mains plug
Access Cover	285mm Ø
Tank Weight Full	1ltr = 1 kg plus weight of empty tank



POWER TANK UTILITY 650 & 1000LTR



The Powertank Utility range is designed for commercial use on a larger scale where there is low mains water pressure and where pressure fluctuates.

It is electronically controlled, starting and stopping the pump automatically when an outlet is opened and closed. The Utility range is designed for areas where the floor space is not restricted. This range caters for a wider variation of tank options to suit a wider range of applications.

KEY FEATURES

- Non-corrosive holding tank (WRAS approved material)
- Pre-fitted WRAS approved fill valve
- Minimal installation requirement
- Adjustable digital display flow controller (Variable Speed Option)
- Dry-run protection with auto restart (time delay)
- AF Air gap (AB Air gap optional)
- Suitable up to Fluid Category 4 (CAT 5 Optional)



SYSTEM CONNECTIONS

Connection	Size
Inlet	½" BSP (¾" Optional)
Outlet	1" BSP
Overflow	1 ¼" (40mm) female waste - pipe compression fitting
Drain Off	1" BSP



Variable Speed Option



Overflow - Inlet



Twin Pump Option



AB Air Gap Option
CAT5

Pump Option	Power			Pressure	1 Bar	2 Bar	3 Bar	4 Bar	5 Bar	6 Bar
	kW	HP	A							
Fixed Speed	0.55	0.75	3.4	Q l/min	73	57	40	10	-	-
Variable Speed	0.75	1	6.3		80	80	80	68	50	14
Variable Speed Plus	1.5	2	8.7		160	160	138	107	50	-
Variable Speed Twin	1.5	2	12.6		160	160	160	136	100	28

RANGE OPTIONS

Model	L (mm)	W (mm)	H (mm)	Weight (kg)
650ltr Utility Fixed Speed	1083	669	1283	54
650ltr Utility Variable Speed	1083	669	1283	60
1000ltr Utility Fixed Speed	1688	563	1640	74
1000ltr Utility Variable Speed	1688	563	1640	80
1000ltr Utility Variable Speed Plus	1688	563	1640	82
1000ltr Utility Variable Speed Twin Pump	1688	563	1640	87

Power Supply	240v 50Hz
Mains Cable	2 mtr fitted with 13 amp fuse mains plug
Access Cover	285mm Ø
Tank Weight Full	1ltr = 1 kg plus weight of empty tank



The Powertank Industrial range is designed to deliver water to commercial and industrial properties where the existing supply fails to meet demand.

The tank is WRAS approved and manufactured with insulating GRP materials and has a removable lid making it ideal for plant rooms. Fitted as standard with a variable speed controller and AF air gap. These tanks are fitted out individually in-house and are fully customisable.

KEY FEATURES

- WRAS approved GRP Tank
- Fully encapsulated insulation to sides and lid
- Close fitting and removable lid
- Screened vent and screened overflow unit
- BMS connections
- Low-level indicator
- AF Air GAP Standard (AB Air GAP Optional)
- Suitable for Fluid Category 4 (CAT5 Optional)



SYSTEM CONNECTIONS

Connection	Size
Inlet	¾" BSP
Outlet	1" Single - 2" Twin - 2" Triple
Overflow	1¼" (40mm) female waste - pipe compression fitting
Warning Pipe	¾" BSP

Mains Power Connection	
Variable	2m x 1mm ² 3 core cable fitted with 13 amp fuse main plug
Variable Plus	2m x 1mm ² 3 core cable fitted with 13 amp fuse main plug
Variable Twin	MCB box with connections for input/output
Variable Triple	MCB box with connections for input/output



Inlet - Overflow

* Larger Inlet Sizes Available On Request
 * 3 Phase Available On Request

Pump Option	Power			Pressure	1 Bar	2 Bar	3 Bar	4 Bar	5 Bar	6 Bar
	kW	HP	A							
Variable Speed	0.75	1	6.3	Q l/min	80	80	80	68	50	14
Variable Speed Plus	1.5	2	8.7		160	160	138	107	50	-
Variable Speed Twin	1.5	2	12.6		160	160	160	136	100	28
Variable Speed Triple	2.25	3	18.9		240	240	240	204	150	84

RANGE OPTIONS

Model	L (mm)	W (mm)	H (mm)
500ltr Industrial	1180mm	680mm	1036mm
1000ltr Industrial	1180mm	1180mm	1093mm
1500ltr Industrial	1180mm	1180mm	1593mm
2000ltr Industrial	2202mm	1202mm	1093mm
2500ltr Industrial	2202mm	1202mm	1343mm
3000ltr Industrial	3202mm	1202mm	1093mm
4000ltr Industrial	2192mm	2192mm	1093mm
5000ltr Industrial	2692mm	2192mm	1093mm

* Industrial dimensions for tank only
 * Larger Tank Sizes Available On Request



INDUSTRIAL OPTIONS

Variable Speed Controls as Standard

The variable speed control allows you to choose your desired pressure, speeding up and slowing down to suit demand. For applications with a high number of water outlets such as hotels, multiple occupancy buildings, commercial premises or factories the pressure will continue to be the same to give a constant pressure at every outlet.

Variable - TWIN & TRIPLE Pump Option

For higher flow rates the Industrial Powertanks can be fitted with two or three pumps to meet the required duty. Twin & Triple pumps sets are configured as duty assist with two or three pumps sharing the duty.

Twin pump options are available from 500ltr tank capacity and Triple pumps options are available from 5000ltr tank capacity.

These operate with the same functionality as a traditional booster set.



INCREASE PERFORMANCE

Variable PLUS – More Powerful Pump Option

Tank Options



CAT5



Split Tank Options

For applications where access is restricted

CAT5 AB Air Gap

Suitable for applications where increased backflow protection is required such as applications in food washing & packing stations, abattoirs, hygienic rooms, surgeries and laboratories.

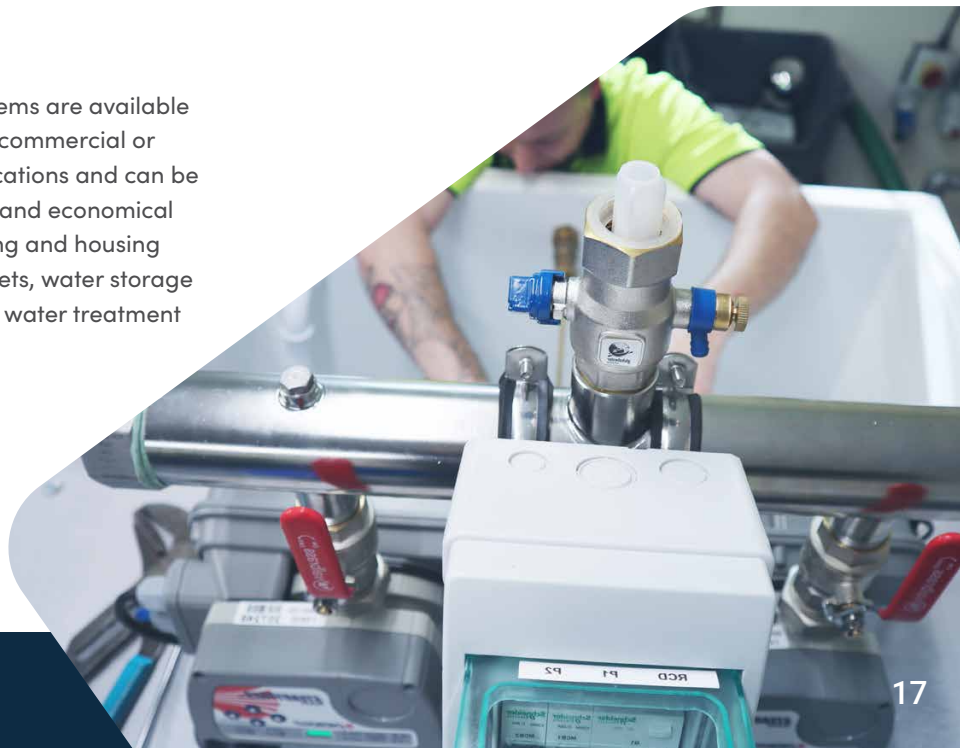
Larger Tanks

In addition to our standard tank capacities we can supply larger tanks sizes in excess of 5000ltrs.



Plant Rooms

Plant room systems are available for use in large commercial or industrial applications and can be a cost effective and economical way of protecting and housing booster pump sets, water storage tanks as well as water treatment equipment.



POWER TANK BUNDED 250 & 650LTR



The Powertank Bunded range is designed for commercial use where there is low mains water pressure and where pressure fluctuates. Every Powertank Bunded tank benefits from a 'tank within a tank' bunded construction, with the outer tank able to maintain a minimum of 110% of the volume of the inner tank. The inner tank acts as the primary storage container, whilst the outer tank acts as a fail safe in the event of a spill.

It is electronically controlled, starting and stopping the pump automatically when an outlet is opened and closed. The Bunded range is designed for areas where the floor space is not restricted.

KEY FEATURES

- Non-corrosive holding tank (WRAS approved material)
- Pre-fitted WRAS approved fill valve
- Minimal installation requirement
- Built-in electronic start/stop
- Dry-run protection with auto restart (time delay)
- AF Air gap
- Suitable up to Fluid Category 4



SYSTEM CONNECTIONS

Connection	Size
Inlet	½" BSP
Outlet	1" BSP
Overflow	1¼" (40mm) female waste - pipe compression fitting
Drain Off	1" BSP



Variable Speed Option Overflow - Inlet

Pump Option	Power			Pressure	1 Bar	2 Bar	3 Bar	4 Bar	5 Bar	6 Bar
	kW	HP	A							
Fixed Speed	0.55	0.75	3.4	Q l/min	73	57	40	10	-	-
Variable Speed	0.75	1	6.3		80	80	80	68	50	14

RANGE OPTIONS

Model	L (mm)	W (mm)	H (mm)	Weight (kg)
250ltr Bunded Fixed Speed	760	760	1478	49
250ltr Bunded Variable Speed	760	760	1478	55
650ltr Bunded Fixed Speed	1200	752	1174	94
650ltr Bunded Variable Speed	1200	752	1374	100

Power Supply	240v 50Hz
Mains Cable	2 mtr fitted with 13 amp fuse mains plug
Access Cover	Internal 190mm, External 285mm
Tank Weight Full	1ltr = 1 kg plus weight of empty tank



PowerTank Integrated UV Disinfection Systems

We offer a complete disinfected water boosting package by combining an Integrated UV system with our PowerTanks. This ensures not only that you increase your water pressure and flow but also the quality of water in your system.

The UV boosted system is available with any standard single pump PowerTank. Higher flow capacity UV systems are also available for use with Twin, Triple & Industrial PowerTanks, for more information please contact us.



36 l/min UV System



68 l/min UV System

STAGE 1: FINE SEDIMENT REMOVAL

Stage 1 is a 5 micron sediment filter cartridge for removing dirt, sediment, debris and absorbing compounds from the water to prevent them shielding bacteria for the UV light.

STAGE 2: ULTRA VIOLET DISINFECTION UNIT

Stage 2 is a Viqua UV disinfection system for the purposes of inactivation of bacteria and viruses in the incoming water supply. This UV system has an integral countdown timer to indicate when the UV lamp needs to be replaced. UV lamps degrade over time and must be replaced every 12 months.

BENEFITS TO UV DISINFECTION

- Equipped to inactivate chlorine-resistant parasites such as Cryptosporidium and Giardia, harmful bacteria like E.Coli, and viruses not visible to the naked eye
- Specially designed and tested Sterilume™-EX lamps provide consistent and reliable ultraviolet output over the entire life of the lamp (9000 hours) to ensure continuous purification. **Always use Viqua genuine replacement lamps and sleeves**
- The system is simple to maintain and service allowing for easy lamp replacement
- Built with a durable stainless steel chamber to prolong life and eliminate ultraviolet light degradation
- The controller visually displays the remaining lamp life and will go into alarm if the lamp fails. Monitored systems are equipped with a UV sensor which provides a continuous readout of UV intensity
- The controller has a sealed case to prevent damage from accidental water intrusion and is fully CSA and CE compliant
- Monitored systems allow for the installation of an optional solenoid valve which will stop the flow of water through the chamber should the UV performance fall below a safe level

TECHNICAL DATA

Model	Stock Code	Height (cm)	Width (cm)	Depth (cm)	Max Pressure	*Max Flow Rate @ 16mj/cm ²	*Max Flow rate @ 30mj/cm ²	Inlet / Outlet
36 l/min system	1079723	60	48	18	6 Bar	60 l/min	33 l/min	1" BSP
68 l/min system	1079731	75	55	18	6 Bar	130 l/min	70 l/min	1" BSP

REPLACEMENT COMPONENTS

Model	5µ Filter Stock Code	UV Lamp Stock Code	UV Sleeve Stock Code	Ballast/Timer Stock Code
36 l/min system	RE5115408	S200RL-HO	QS-001	BA-ICE-CL
68 l/min System	RE5117408	S410RL-HO	QSO-410	BA-ICE-CL



Water Softener Systems

In addition to a Powertank delivering water at the right pressure for your application you can now have softened & boosted water at the same time.

As part of our water treatment product range we offer water softeners for hard water areas. Our range includes cabinet water softeners and simplex or duplex softeners depending on your Powertank system and application.

Water Softeners work to reduce the amount of minerals in the water thereby softening the water. The softening process involves removing high levels of calcium and magnesium through an ion-exchange process. The calcium and magnesium ions that cause the build-up of limescale are replaced by sodium ions.

Benefits include:



Usage and spend on detergents and shampoos is reduced by up to 50%



People with eczema and other skin conditions have seen significant improvements



Improved efficiency and longer life of appliances



Hair feels softer and clothes are softer and brighter as a result of using soft water



Time is saved cleaning and no need to use harsh detergents



Energy bills can be reduced by at least 10%



eSoft

SOFTENER SPECIFICATION			
CABINET SOFTENER	10LTR SYSTEM	20LTR SYSTEM	30LTR SYSTEM
Softener Specification	8 x 17"	8 x 24"	10 x 35"
Total Height	625mm	800mm	1095mm
Total Depth	440mm	440mm	580mm
Width	240mm	240mm	350mm
Maximum Working Pressure	5 bar	5 bar	5 bar
Minimum Working Pressure	1.7 bar	1.7 bar	1.7 bar
Service Flow Rate	10 l/min	15 l/min	23 l/min
Pressure Drop at Service Flow	0.2 bar	0.35 bar	0.55 bar
Resin Volume	8 litres	20 litres	30 litres
Minimum Supply Flow Rate	8 l/min	8 l/min	8 l/min
Salt Use Per Regeneration	1.2 kgs	3.0 kgs	4.5 kgs
Inlet/Outlet/Drain Connections	3/4" BSPM	3/4" BSPM	3/4" BSPM
Overflow Connections	3/8" hose tail	3/8" hose tail	3/8" hose tail
Softening Capacity @ 300PPM	1330 litres	2500 litres	5000 litres

WHICH SIZE SOFTENER WOULD I NEED?



Suitable for 1 or 2 bedroom households or where space is an issue. Can be installed inside a kitchen unit.



The most popular size, suitable for 2 to 4 bedroom households.



A large domestic softener for households with 4+ bedrooms

For information on larger softeners systems please contact us.



The Powertank is a booster pump system with water storage capacity options ranging from 125ltr to 1000ltr. By simply adding an additional 'assist' tank, water storage capacity can be increased.

Compact

Model	Height	Length	Width
125ltr tank only	767mm	560mm	490mm



Slimline

Model	Height	Length	Width
200ltr tank only	1190mm	N/A	584mm
350ltr tank only	1656mm	N/A	584mm
450ltr tank only	2100mm	N/A	584mm



Utility

Model	Height	Length	Width
500ltr tank only	1393mm	N/A	760mm
650ltr tank only	1083mm	1083mm	669mm
750ltr tank only	2113mm	N/A	760mm
1000ltr tank only	1444mm	1688mm	563mm



Coffin

Model	Height	Length	Width
200ltr tank only	540mm	1106mm	475mm
270ltr tank only	521mm	1571mm	475mm
340ltr tank only	750mm	1571mm	475mm
450ltr tank only	616mm	1765mm	580mm



Rectangular

Model	Height	Length	Width
300ltr tank only	710mm	1045mm	665mm
500ltr tank only	800mm	1190mm	727mm



POWERTANK OPTIONAL EXTRAS



Drip Tray (Coffin, Rectangular, Utility)

- Range available: Coffin, Rectangular, 650ltr & 1000ltr Utility
- 1" overflow connection



Drip Tray (Slimline & Utility)

- Suitable for: 200ltr 300ltr, 500ltr & 750ltr
- 1" overflow connection
- Lift handles



UV Filtration

- Available as 36 l/min and 68 l/min systems for Fixed or Variable speed Powertanks
- Integrated Ultra violet disinfection
- Includes 5 micron pre-filtration
- 1" Connections



Insulated Jackets

- Available for Slimline, Utility, & Coffin range
- Reduce dB/vibration levels
- Easy to install
- Extra protection for extreme weather conditions



Water Softeners

- Water Softener systems for hard water areas
- Removes high levels of calcium and magnesium
- 10ltr, 20ltr & 30ltr cabinet systems
- Simplex & Duplex systems for larger applications



Reverse Osmosis Systems

- High quality safe drinking water
- Home appliances (kettle, iron, steam cooker, air humidifier etc.) will be protected from scale
- 4 or 5 stage systems
- Pumped or Non-Pumped options



Anti Vibration Mat

- Improvement of impact sound - $\Delta L_w = 18\text{dB}$
- Reduce dB/vibration levels
- Easy to install
- Simple processing - cutting, drilling
- Various sizes available for each model



Insulated Jackets

- Available for Slimline, Utility, & Coffin range
- 80mm insulation
- Reduce dB/vibration levels
- Easy to install
- Extra protection for extreme weather conditions



Conversion Kit for Compact Model

- 1m flexible inlet hose, 15mm Aquavend, Speedfit connection
- 600mm flexible outlet hose, 22mm Aquavend, Speedfit connection
- HEPVO 40mm CVI self sealing trap with CV3 adapter McAlpine Flexcon 2 450mm flexible waste pipe 90° elbow 40mm, 100mm x 40mm waste pipe



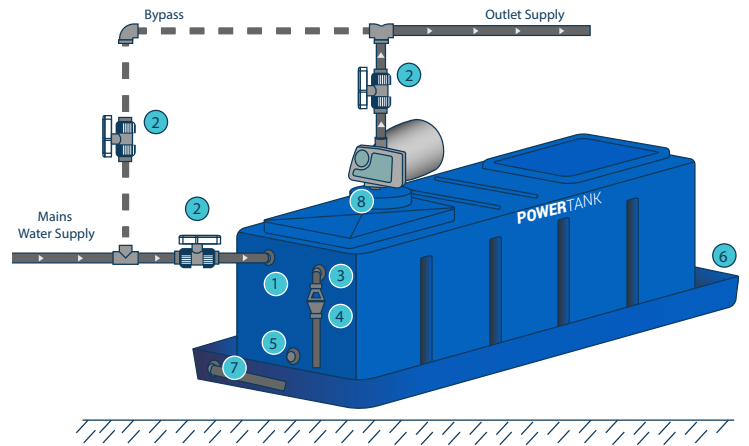
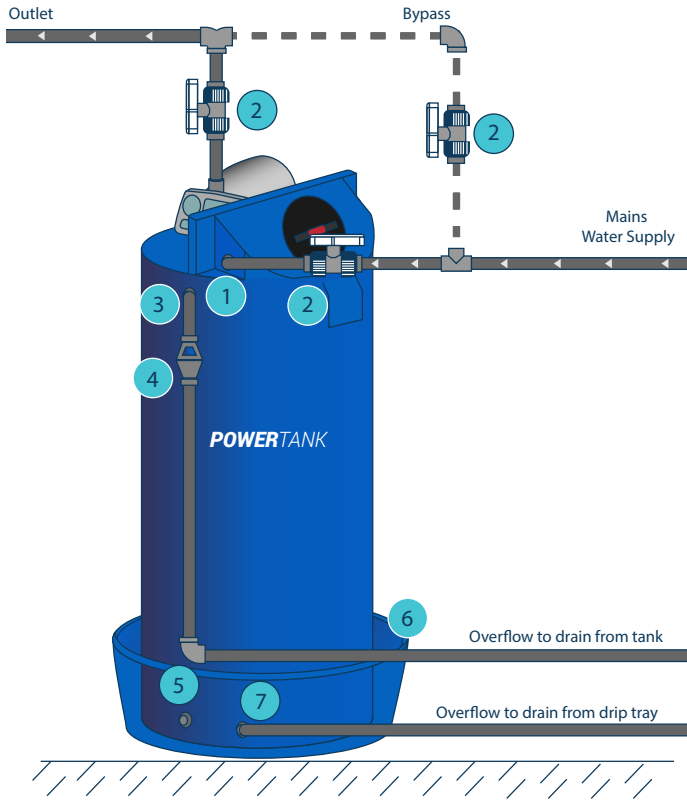
Wall Bracket Support for Pressure Vessel

- Adjustable arm length
- 1" connection



POWERTANK **INSTALLATION GUIDE**

For full installations instructions please refer to the O&M Manual. Visit: powertank.co.uk/support



1. Ball cock
2. Isolation valve
3. Powertank overflow
4. Tundish
5. Powertank drain off
6. Drip tray
7. Drip tray overflow

* The use of a drip tray and insulation jacket are recommended with every installation



Other Products in the Water Boosting Range

Here at Pedrollo Distribution we know that everybody's requirements are different and the Powertank may not always be the correct option. We have a range of water boosting products that ensure we have a solution whatever your situation.

- › **Water Boosting for Unvented Systems (Where you already have a Tank)**
Our range of single pump and controllers can be fitted in any unvented system where you may already have a cold water tank, or you would like to source your own.
- › **Water Boosting for Gravity Fed Systems (Vented)**
Our range of twin pumps and controllers can be fitted onto the hot and cold feeds to ensure equal pressure throughout your property.
- › **Water Boosting for Unvented Systems with Good Pressure and Low Flow**
Our accumulators are a low cost option for properties with good pressure but low flow. These fill up with pressurised water from the mains when demand is low which provides a reserve of water when you need it.
- › **Bespoke Solutions – Built to Order**
If our standard offerings don't meet your requirements we have a comprehensive range of pumps, tanks and controllers which can be combined to suit your specific application.

POWERBOOST *Cold Water Booster Sets*

Pedrollo Distribution introduces the POWERBOOST range of clean water booster sets for the supply of water for domestic, commercial, agricultural, industrial and municipal markets.



FLOW



PRO



SOLO

power-boost.co.uk

Pedrollo Distribution Ltd
Crossfield Fort
Crossfield Road Industrial Estate
Lichfield
WS13 6RJ

t: 01543 415200
e: sales@pedrollo.co.uk
w: pedrolldistribution.co.uk



powertank.co.uk

Ref 01/06/24