

Similar to figure

Data sheet

Hydraulic data

| | |
|------------------------------------|-------|
| Maximum operating pressure P_N | 3 bar |
| Min. fluid temperature T_{min} | 3 °C |
| Max. fluid temperature T_{max} | 40 °C |
| Min. ambient temperature T_{min} | 3 °C |
| Max. ambient temperature T_{max} | 40 °C |
| Switching volume V | 220 l |

Motor data

| | |
|--|--------------------|
| Mains connection | 3~400 V, 50 Hz |
| Rated current I_N | 15.6 A |
| Protection class | IP67 |
| Phase | 3 |
| Rated speed n | 1450 1/min |
| Number of poles | 4 |
| Activation type | Star-Delta (YΔ) |
| Max. switching frequency t | 60 1/h |
| Power consumption $P_1(Q=max.)$ of selected impeller * number of pumps P_1 | 8400 W |
| Operating mode (non-immersed) | S1 |
| Insulation class | F |

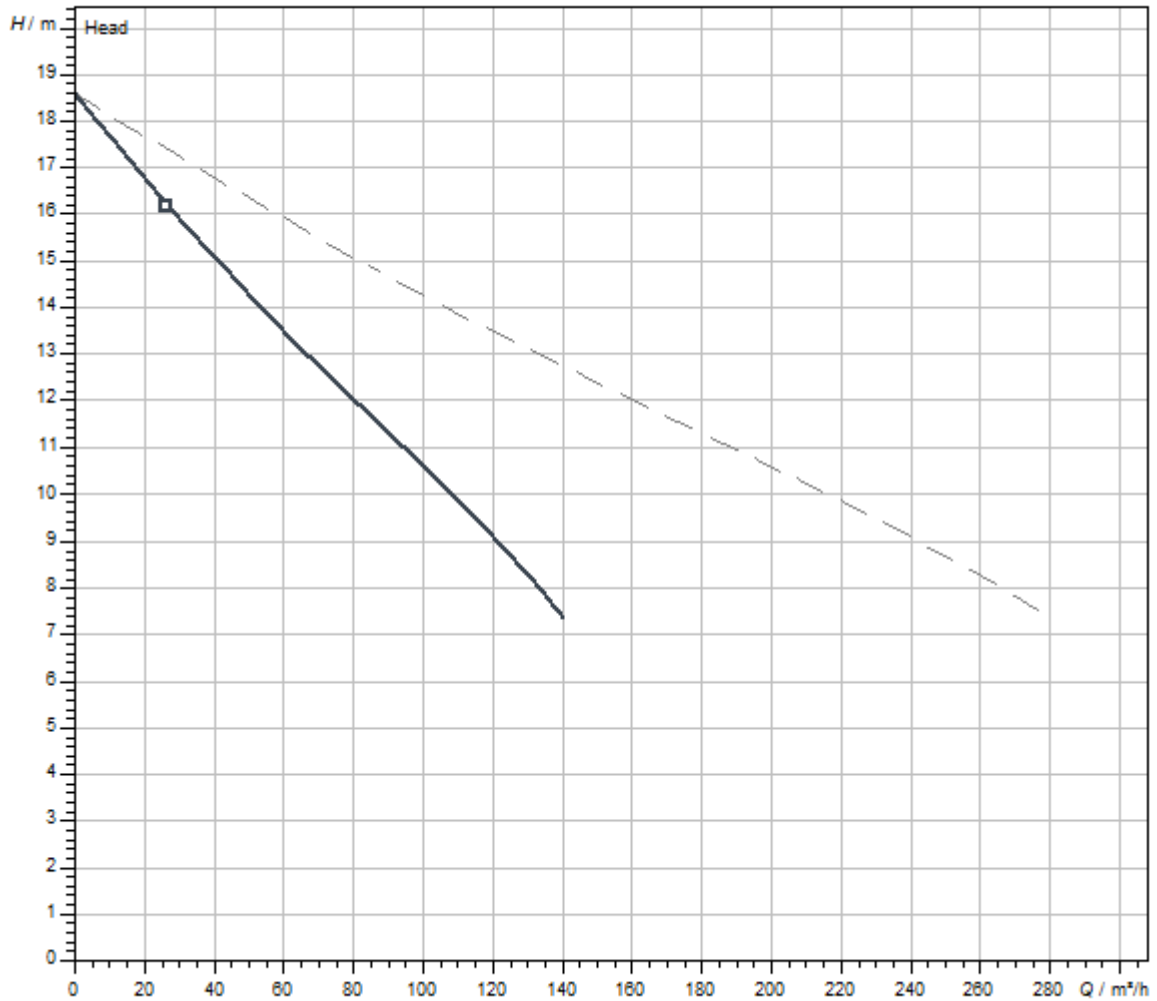
Materials

| | |
|---------------|-----------------|
| Pump housing | PUR |
| Impeller | PUR |
| Shaft | Stainless steel |
| Motor housing | Stainless steel |

Installation dimensions

| | |
|--|--------|
| Pipe connection on the suction side DN_s | - |
| Pipe connection on the discharge side DN_d | DN 100 |

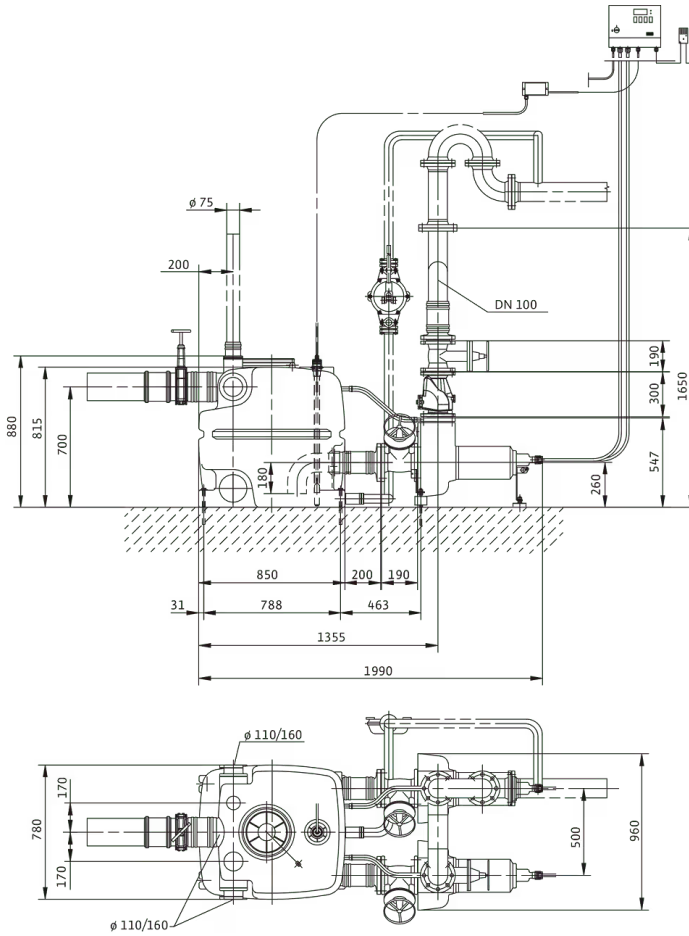
Pump curves



| | |
|--------------------------------------|-------------|
| Fluid media | Water 100 % |
| Fluid temperature T | 20.00 °C |
| speed at duty point $n_{hydr. @ OP}$ | 1,450 1/min |
| Impeller diameter $d_{imp.}$ | 230 mm |

Dimensions and dimensions drawings

DrainLift XXL 1040



Tender text

Ready-for-connection, fully submersible and automatic sewage lifting unit as a double-pump system with automatic duty cycling, standby and peak-load operation. Two separate, dry-installed submersible sewage pumps in three-phase version with sheath flow cooling, stainless steel housing and thermal motor monitoring. One gas-tight and water-tight collection reservoirs made from plastic with clearly defined inlet connections and level control with level sensor. Microprocessor-controlled switchgear with

- > LEDs for displaying operating status and error messages
- > Adjustable follow-up time
- > Integrated and mains-dependent alarm
- > 1x potential-free contact for connection of a collective fault signal (SSM).

Scope of delivery:

- > Sewage lifting unit ready for connection with switchgear
- > 1x collar for diaphragm hand pump connection
- > 1x inlet connection DN 150
- > 1x collar for venting connection DN 70

> 1 x kit for connection of tank and pump

Attention: To install required fittings (e.g. Y-pipe, gate valve and non-return valve), they must be ordered as an accessory!

Operating Data

Approved field of application

| | |
|--|-------|
| Fluid temperature T | 3 °C |
| Max. fluid temperature, for short periods up to 3 min. T | 60 °C |
| Ambient temperature T | 3 °C |
| Maximum operating pressure PN | 3 bar |
| Max. permissible pressure in the pressure pipe P | 3 bar |

Product data

| | |
|---|--------------------|
| Gross volume of the tank V | 400 l |
| Switching volume V | 220 l |
| Operating mode (non-immersed) | S1 S3-25%, 60 s |
| Height H | 880 mm |
| Length L | 1990 mm |
| Width W | 960 mm |
| Diagonal dimension <i>Diagonal axis</i> | 2173 mm |

Motor data

| | |
|------------------------------|-----------------|
| Mains connection | 3~400 V, 50 Hz |
| Voltage tolerance | ±10 % |
| Rated power P_2 | 7 kW |
| Rated speed n | 1450 1/min |
| Rated current I_N | 15.6 A |
| Insulation class | F |
| Protection class motor | IP67 |
| Activation type | Star-Delta (YΔ) |
| Max. switching frequency t | 60 1/h |
| Motor protection | WSK |

Cable

| | |
|------------|----|
| Mains plug | no |
|------------|----|

Materials

| | |
|---------------|-----------------|
| Tank | PE |
| Pump housing | PUR |
| Impeller | PUR |
| Shaft | Stainless steel |
| Motor housing | Stainless steel |

Installation dimensions

| | |
|---------------------------------------|--------|
| Pipe connection on the suction side | Ø 110 |
| Pipe connection on the discharge side | DN 100 |
| Connection venting | Ø 75 |

Ordering information

| | |
|------------------------------|--------------------------|
| Brand | Wilo |
| Product description | DrainLift XXL 1040-2/7,0 |
| Net weight, approx. <i>m</i> | 195 kg |
| Article number | 2509016 |

Installation type

Mains-independent alarm signal

Alarm signal for detection of flooding in rooms and buildings. The alarm signal is acoustic, optical or wireless. In addition, other consumers can be controlled directly.

DrainAlarm

| | |
|------------|---------|
| DrainAlarm | 2545133 |
|------------|---------|

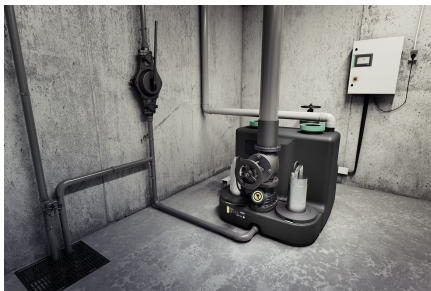
Signal horn

| | |
|---------------------|-----------|
| Signal horn 1~230 V | 501459398 |
|---------------------|-----------|

Flash light

| | |
|-----------------------|---------|
| Flash light 1~230 VAC | 2551613 |
|-----------------------|---------|

Stationary dry well installation



The lifting unit is installed in a space below the backflow level. Sewage from all drainage objects below the backflow level flows into the lifting unit. On the discharge side, the lifting unit is connected to the sewage system above the backflow level via a pipe loop. Inlet and discharge lines are self-supporting.

Installation example

Y-piece

| | |
|---------------------------------------|---------|
| DN 100 Y-piece for DrainLift XXL 1040 | 2511606 |
|---------------------------------------|---------|

Flange connector

| | |
|-------------------------|---------|
| Flange connector DN 100 | 2511597 |
| Flange connector DN 150 | 2511598 |
| Flange connector DN 80 | 2511595 |

Diaphragm hand pump

| | |
|---------------------|---------|
| Diaphragm hand pump | 2060166 |
|---------------------|---------|

Inlet seal

| | |
|-----------------------|---------|
| DN 150 inlet seal | 2552849 |
| DN 200 inlet seal | 2552850 |
| DN 200 inlet seal kit | 2552851 |

Shut-off device for wastewater and sewage

| | |
|-------------------------------|---------|
| Gate valve DN 100, EN-GJL-250 | 2017163 |
|-------------------------------|---------|

| | |
|-------------------------------|---------|
| Gate valve DN 100, PVC | 2529808 |
| Gate valve DN 150, EN-GJL-250 | 2017164 |
| Gate valve DN 150, PVC | 2529809 |

Non-return valve

| | |
|-------------------------|---------|
| Non-return valve DN 100 | 2017169 |
|-------------------------|---------|

3-way cock

| | |
|--------------------------------|---------|
| 3-way shut-off ball cock Rp 1½ | 2511607 |
|--------------------------------|---------|

Mechanical accessories

Fittings

3-way cock

| | |
|--------------------------------|---------|
| 3-way shut-off ball cock Rp 1½ | 2511607 |
|--------------------------------|---------|

Non-return valve

| | |
|-------------------------|---------|
| Non-return valve DN 100 | 2017169 |
|-------------------------|---------|

| | |
|-------------------------|---------|
| Non-return valve DN 150 | 2017170 |
|-------------------------|---------|

Shut-off device for wastewater and sewage

| | |
|-------------------------------|---------|
| Gate valve DN 100, EN-GJL-250 | 2017163 |
|-------------------------------|---------|

| | |
|-------------------------------|---------|
| Gate valve DN 150, EN-GJL-250 | 2017164 |
|-------------------------------|---------|

| | |
|------------------------|---------|
| Gate valve DN 100, PVC | 2529808 |
|------------------------|---------|

| | |
|------------------------|---------|
| Gate valve DN 150, PVC | 2529809 |
|------------------------|---------|

Installation/setup

Diaphragm hand pump

| | |
|---------------------|---------|
| Diaphragm hand pump | 2060166 |
|---------------------|---------|

Inlet seal

| | |
|------------------|---------|
| Inlet seal DN 32 | 6096498 |
|------------------|---------|

| | |
|------------------|---------|
| DN 40 inlet seal | 6096499 |
|------------------|---------|

| | |
|-------------------|---------|
| DN 100 inlet seal | 2522672 |
|-------------------|---------|

| | |
|-------------------|---------|
| DN 150 inlet seal | 2552849 |
|-------------------|---------|

| | |
|-------------------|---------|
| DN 200 inlet seal | 2552850 |
|-------------------|---------|

| | |
|----------------------|---------|
| DN 32 inlet seal kit | 6096492 |
|----------------------|---------|

| | |
|----------------------|---------|
| DN 40 inlet seal kit | 6096493 |
|----------------------|---------|

| | |
|-----------------------|---------|
| DN 100 inlet seal kit | 2521841 |
|-----------------------|---------|

| | |
|-----------------------|---------|
| DN 150 inlet seal kit | 2515145 |
|-----------------------|---------|

| | |
|-----------------------|---------|
| DN 200 inlet seal kit | 2552851 |
|-----------------------|---------|

Pipes/pipe joints

Flange connector

| | |
|------------------------|---------|
| Flange connector DN 80 | 2511595 |
|------------------------|---------|

| | |
|-------------------------|---------|
| Flange connector DN 100 | 2511597 |
|-------------------------|---------|

| | |
|-------------------------|---------|
| Flange connector DN 150 | 2511598 |
|-------------------------|---------|

Y-piece

| | |
|---------------------------------------|---------|
| DN 100 Y-piece for DrainLift XXL 1040 | 2511606 |
|---------------------------------------|---------|

Electrical accessories

Alarm signal

DrainAlarm

| | |
|------------------|---------|
| DrainAlarm | 2545133 |
| DrainAlarm FIRST | 2550526 |

Flash light

| | |
|-------------------------------|---------|
| Mounted Flash light 1~230 VAC | 2510429 |
| Flash light 24 VDC | 2551612 |
| Flash light 1~230 VAC | 2551613 |

Signal horn

| | |
|-----------------------|-----------|
| Signal horn 12-24 VDC | 2017208 |
| Signal horn 1~230 V | 501459398 |

Small alarm switchgear

| | |
|----------------------------|-----------|
| Small alarm switchgear KAS | 501534094 |
|----------------------------|-----------|

Level control

Float switch WA

| | |
|---|-----------|
| Float switch WA65 with 5 m cable | 503211390 |
| Float switch WA65 with 10 m cable | 503211893 |
| Float switch WA65 with 20 m cable | 2004431 |
| Float switch WA65 with 30 m cable | 2004432 |
| Float switch WA KR1 S with 5 m cable | 6082806 |
| Float switch WA KR1 S with 10 m cable | 6082807 |
| Float switch WA65 (PSN-X) with 20 m cable | 6088843 |
| Float switch WA65 (PSN-X) with 10 m cable | 6088844 |
| Float switch WA65 (PSN-X) with 5 m cable | 6088845 |

Services

With Wilo as your partner, you can not only be sure of choosing high-quality product solutions, but also of benefiting from a comprehensive, worry-free package of well thought-out services. We collaborate to develop a service concept tailored to your individual needs; with our expertise and personal consultancy, we make sure that the operation of your systems is as energy-efficient, reliable and economical as possible. All the while our competent Wilo service technicians are ready to assist you with fast, reliable and on-time support.

Recommended services

| | |
|-----------------------------------|---------|
| Maintenance BASIC DrainLift XXL | 2219543 |
| Maintenance COMFORT DrainLift XXL | 2219517 |
| Maintenance PREMIUM DrainLift XXL | 2219570 |

| | |
|-----------------------------|---------|
| Commissioning DrainLift XXL | 2219414 |
|-----------------------------|---------|

More suitable services

| | |
|---------------------------------|---------|
| Service Package L DrainLift XXL | 2219722 |
| Service Package M DrainLift XXL | 2219693 |

| | |
|---------------------------------|---------|
| Extended Warranty DrainLift XXL | 2219468 |
|---------------------------------|---------|

| | |
|---------------------------|---------|
| Supervision DrainLift XXL | 2219351 |
|---------------------------|---------|

| | |
|----------------------------|---------|
| Installation DrainLift XXL | 2219386 |
|----------------------------|---------|

| | |
|-----------------------------------|---------|
| System Optimisation DrainLift XXL | 2219281 |
|-----------------------------------|---------|

| | |
|--------------------------------|---------|
| Energy Solutions DrainLift XXL | 2219316 |
|--------------------------------|---------|

| | |
|----------------------|---------|
| Repair DrainLift XXL | 2219635 |
|----------------------|---------|