

Similar to figure

Data sheet

Hydraulic data

Maximum operating pressure P_N	3 bar
Min. fluid temperature T_{min}	3 °C
Max. fluid temperature T_{max}	40 °C
Min. ambient temperature T_{min}	3 °C
Max. ambient temperature T_{max}	40 °C
Switching volume V	230 l

Motor data

Mains connection	3~400 V, 50 Hz
Rated current I_N	7.1 A
Protection class	IP67
Phase	3
Rated speed n	1450 1/min
Number of poles	4
Activation type	Direct On Line (DOL)
Max. switching frequency t	60 1/h
Power consumption $P_1(Q=max.)$ of selected impeller * number of pumps P_1	2700 W
Operating mode (non-immersed)	S1
Insulation class	F

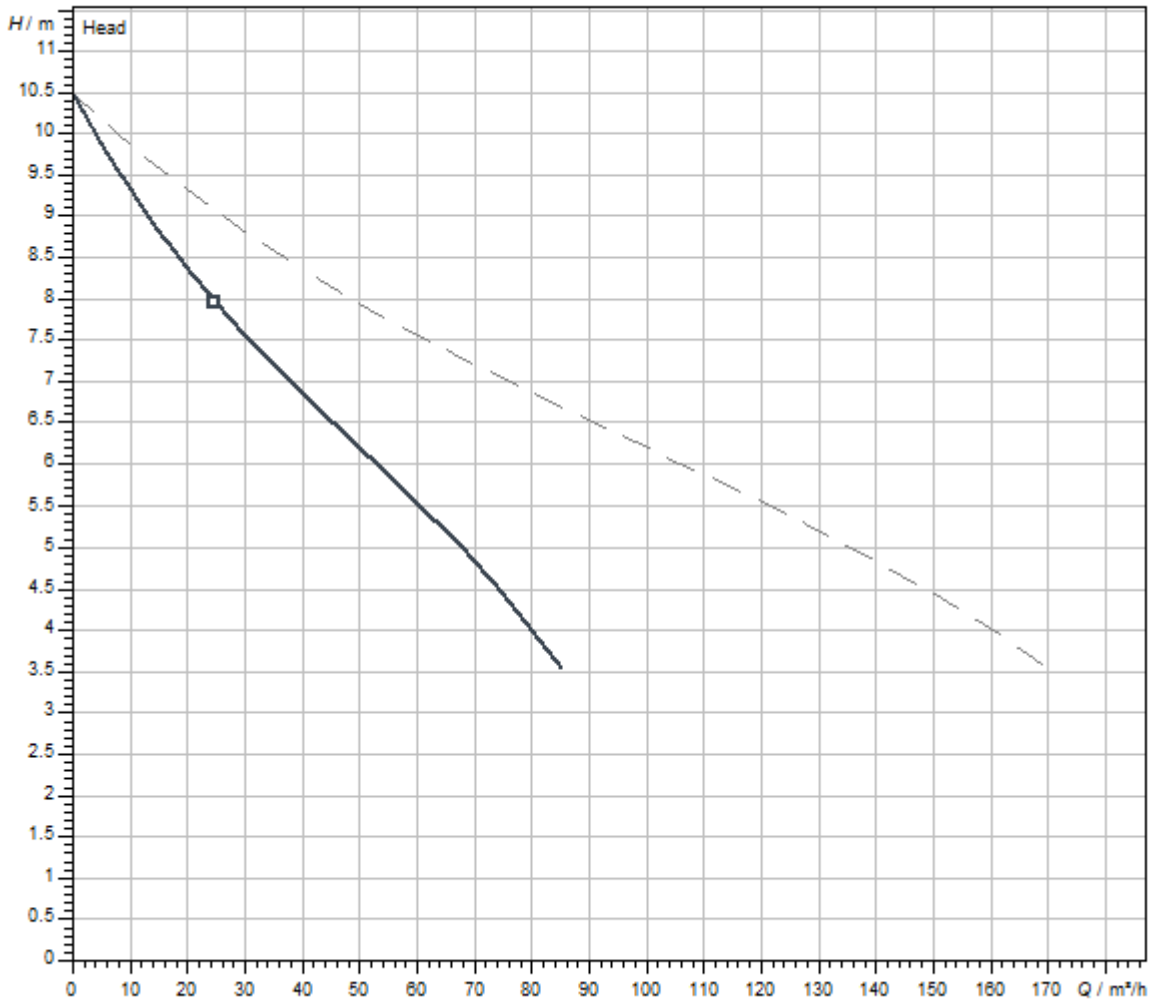
Materials

Pump housing	PUR
Impeller	PUR
Shaft	Stainless steel
Motor housing	Stainless steel

Installation dimensions

Pipe connection on the suction side DN_s	-
Pipe connection on the discharge side DN_d	DN 80

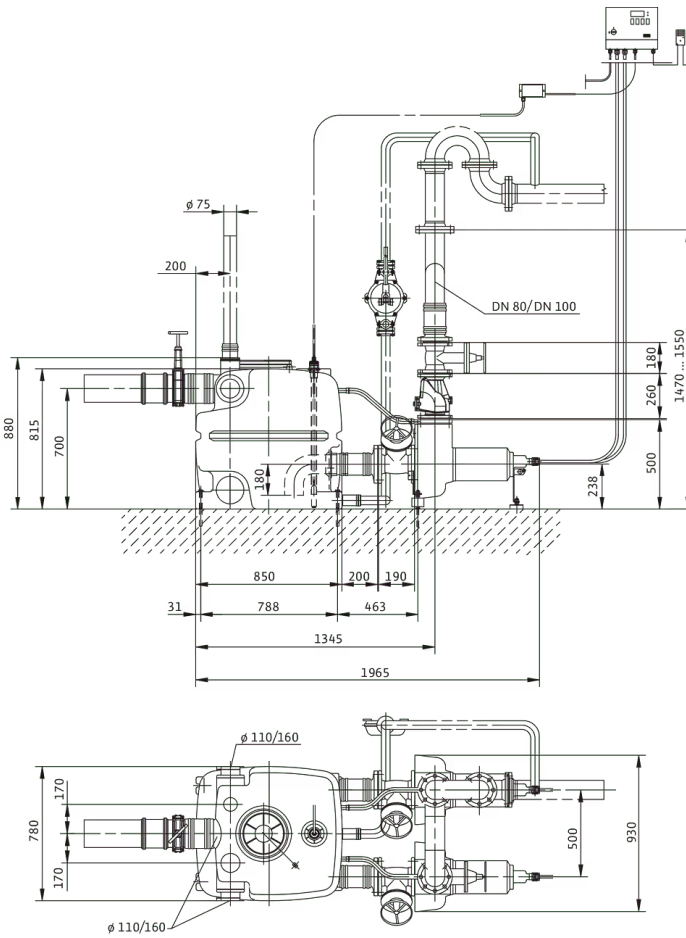
Pump curves



Fluid media	Water 100 %
Fluid temperature <i>T</i>	20.00 °C
speed at duty point <i>n hydr. @ OP</i>	1,450 1/min
Impeller diameter <i>d imp.</i>	170 mm

Dimensions and dimensions drawings

DrainLift XXL 840



Tender text

Ready-for-connection, fully submersible and automatic sewage lifting unit as a double-pump system with automatic duty cycling, standby and peak-load operation. Two separate, dry-installed submersible sewage pumps in three-phase version with sheath flow cooling, stainless steel housing and thermal motor monitoring. One gas-tight and water-tight collection reservoirs made from plastic with clearly defined inlet connections and level control with level sensor. Microprocessor-controlled switchgear with

- > LEDs for displaying operating status and error messages
- > Adjustable follow-up time
- > Integrated and mains-dependent alarm
- > 1x potential-free contact for connection of a collective fault signal (SSM).

Scope of delivery:

- > Sewage lifting unit ready for connection with switchgear
- > 1x collar for diaphragm hand pump connection
- > 1x inlet connection DN 150
- > 1x collar for venting connection DN 70

> 1 x kit for connection of tank and pump

Attention: To install required fittings (e.g. Y-pipe, gate valve and non-return valve), they must be ordered as an accessory!

Operating Data

Approved field of application

Fluid temperature T	3 °C
Max. fluid temperature, for short periods up to 3 min. T	60 °C
Ambient temperature T	3 °C
Maximum operating pressure PN	3 bar
Max. permissible pressure in the pressure pipe P	3 bar

Product data

Gross volume of the tank V	400 l
Switching volume V	230 l
Operating mode (non-immersed)	S1 S3-25%, 60 s
Height H	880 mm
Length L	1965 mm
Width W	930 mm
Diagonal dimension <i>Diagonal axis</i>	2173 mm

Motor data

Mains connection	3-400 V, 50 Hz
Voltage tolerance	±10 %
Rated power P_2	2.1 kW
Rated speed n	1450 1/min
Rated current I_N	7.1 A
Insulation class	F
Protection class motor	IP67
Activation type	Direct On Line (DOL)
Max. switching frequency t	60 1/h
Motor protection	WSK

Cable

Mains plug	no
------------	----

Materials

Tank	PE
Pump housing	PUR
Impeller	PUR
Shaft	Stainless steel
Motor housing	Stainless steel

Installation dimensions

Pipe connection on the suction side	Ø 110
Pipe connection on the discharge side	DN 80
Connection venting	Ø 75

Ordering information

Brand	Wilo
Product description	DrainLift XXL 840-2/2,1
Net weight, approx. <i>m</i>	160 kg
Article number	2509001

Installation type

Mains-independent alarm signal

Alarm signal for detection of flooding in rooms and buildings. The alarm signal is acoustic, optical or wireless. In addition, other consumers can be controlled directly.

DrainAlarm

DrainAlarm	2545133
------------	---------

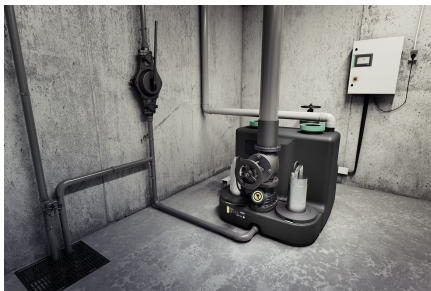
Signal horn

Signal horn 1~230 V	501459398
---------------------	-----------

Flash light

Flash light 1~230 VAC	2551613
-----------------------	---------

Stationary dry well installation



The lifting unit is installed in a space below the backflow level. Sewage from all drainage objects below the backflow level flows into the lifting unit. On the discharge side, the lifting unit is connected to the sewage system above the backflow level via a pipe loop. Inlet and discharge lines are self-supporting.

Installation example

Y-piece

DN 80 Y-piece for DrainLift XXL 840	2511605
-------------------------------------	---------

Flange connector

Flange connector DN 100	2511597
Flange connector DN 150	2511598
Flange connector DN 80	2511595

Diaphragm hand pump

Diaphragm hand pump	2060166
---------------------	---------

Inlet seal

DN 150 inlet seal	2552849
DN 200 inlet seal	2552850
DN 200 inlet seal kit	2552851

Shut-off device for wastewater and sewage

Gate valve DN 100, EN-GJL-250	2017163
-------------------------------	---------

Gate valve DN 100, PVC	2529808
Gate valve DN 150, EN-GJL-250	2017164
Gate valve DN 150, PVC	2529809
Gate valve DN 80, EN-GJL-250	2017162

Non-return valve

Non-return valve DN 80	2017168
------------------------	---------

3-way cock

3-way shut-off ball cock Rp 1½	2511607
--------------------------------	---------

Mechanical accessories

Fittings

3-way cock

3-way shut-off ball cock Rp 1½	2511607
--------------------------------	---------

Non-return valve

Non-return valve DN 80	2017168
------------------------	---------

Shut-off device for wastewater and sewage

Gate valve DN 80, EN-GJL-250	2017162
------------------------------	---------

Gate valve DN 100, EN-GJL-250	2017163
-------------------------------	---------

Gate valve DN 150, EN-GJL-250	2017164
-------------------------------	---------

Gate valve DN 100, PVC	2529808
------------------------	---------

Gate valve DN 150, PVC	2529809
------------------------	---------

Installation/setup

Diaphragm hand pump

Diaphragm hand pump	2060166
---------------------	---------

Inlet seal

Inlet seal DN 32	6096498
------------------	---------

DN 40 inlet seal	6096499
------------------	---------

DN 100 inlet seal	2522672
-------------------	---------

DN 150 inlet seal	2552849
-------------------	---------

DN 200 inlet seal	2552850
-------------------	---------

DN 32 inlet seal kit	6096492
----------------------	---------

DN 40 inlet seal kit	6096493
----------------------	---------

DN 100 inlet seal kit	2521841
-----------------------	---------

DN 150 inlet seal kit	2515145
-----------------------	---------

DN 200 inlet seal kit	2552851
-----------------------	---------

Pipes/pipe joints

Flange connector

Flange connector DN 80	2511595
------------------------	---------

Flange connector DN 100	2511597
-------------------------	---------

Flange connector DN 150	2511598
-------------------------	---------

Y-piece

DN 80 Y-piece for DrainLift XXL 840	2511605
-------------------------------------	---------

Electrical accessories

Alarm signal

DrainAlarm

DrainAlarm	2545133
DrainAlarm FIRST	2550526

Flash light

Mounted Flash light 1~230 VAC	2510429
Flash light 24 VDC	2551612
Flash light 1~230 VAC	2551613

Signal horn

Signal horn 12-24 VDC	2017208
Signal horn 1~230 V	501459398

Small alarm switchgear

Small alarm switchgear KAS	501534094
----------------------------	-----------

Level control

Float switch WA

Float switch WA65 with 5 m cable	503211390
Float switch WA65 with 10 m cable	503211893
Float switch WA65 with 20 m cable	2004431
Float switch WA65 with 30 m cable	2004432
Float switch WA KR1 S with 5 m cable	6082806
Float switch WA KR1 S with 10 m cable	6082807
Float switch WA65 (PSN-X) with 20 m cable	6088843
Float switch WA65 (PSN-X) with 10 m cable	6088844
Float switch WA65 (PSN-X) with 5 m cable	6088845

Services

With Wilo as your partner, you can not only be sure of choosing high-quality product solutions, but also of benefiting from a comprehensive, worry-free package of well thought-out services. We collaborate to develop a service concept tailored to your individual needs; with our expertise and personal consultancy, we make sure that the operation of your systems is as energy-efficient, reliable and economical as possible. All the while our competent Wilo service technicians are ready to assist you with fast, reliable and on-time support.

Recommended services

Maintenance BASIC DrainLift XXL	2219543
Maintenance COMFORT DrainLift XXL	2219517
Maintenance PREMIUM DrainLift XXL	2219570

Commissioning DrainLift XXL	2219414
-----------------------------	---------

More suitable services

Service Package L DrainLift XXL	2219722
Service Package M DrainLift XXL	2219693

Extended Warranty DrainLift XXL	2219468
---------------------------------	---------

Supervision DrainLift XXL	2219351
---------------------------	---------

Installation DrainLift XXL	2219386
----------------------------	---------

System Optimisation DrainLift XXL	2219281
-----------------------------------	---------

Energy Solutions DrainLift XXL	2219316
--------------------------------	---------

Repair DrainLift XXL	2219635
----------------------	---------