

GHV20/66SVX03G185/4

Technical data

Company name
Contact
Phone number
e-mail address

Operating data					
1	Pumpe type	Single-/Multi-pump set		Fluid	Water, pure
2	No. of pumps	2		Operating temperature t A	°C 4
3	Nominal flow	m ³ /h	0	pH-value at t A	7
4	Nominal head	m	0	Density at t A	kg/m ³ 1000
5	Static head	m	0	Vapor pressure at t A	kPa 100
6	Inlet pressure	kPa	0	Kin. viscosity at t A	mm ² /s 1.569
7	Environmental temperature	°C	20	Altitude	0
8	Available system NPSH	m	0		

Pump data		
9	Product version	[X] - Hydrovar X+
10	Operating speed	3600 rpm
11	Stages	3
12	Max. working pressure	kPa 1631
13	Head H(Q=0)	m 170
14	Max. shaft power	kW 44
15	Shaft power	kW
16	Power input	kW
17	Efficiency	%
18	Overall efficiency	%
19	NPSH 3%	m
20	Total weight	kg 745.0
21		

Materials			
	Pump		Options
22			
23	Manifolds	Stainless steel, 1.4301, AISI 304	GHV Non-return valve Non return valve in delivery side
24	On-off valves butterfly type	Disc: Epoxy/Gasket: EPDM/Body: Cast Iron	Additional Card No card
25	Non-return valves	Painted cast iron with AISI 304 flaps	Analog Device Standard
26	Pressure switches	Galvanized steel/AISI 301	Condensation Resistance Standard
27	Pressure trasmitters	AISI 304L & AISI 316L	Control Dev ices Oversized Standard
28	Caps/plugs	AISI 304 or superior	Control Panel Standard
29	Sliding/Blind flanges	Galvanized steel	Control Panel cloud connection Standard without
30	Welded flanges	Stainless steel, 1.4301, AISI 304	Control Panel Position Standard position
31	Fittings	AISI 304 or superior	Control Panel Protection Degree Standard
32	Bracket	Painted steel	DACH - Control Panel mounted on Standard
33	Base	Painted steel	DACH - Optical sensor for lack/presence of water Control Panel Options None
34	On-off valves ball type	Nickel-plated brass	Standard Standard
35			Delivery Side Standard delivery
36			Double Pressure Transmitter Standard
37			Electric Pump Special Seals Standard
38			Emergency Standard
39			High Pressure Protection Without high pressure protection on delivery
40			N.A.
41			N.A.
			Phase Missing Standard

Motor data				
42	Manufacturer	Lowara e-XM		N.A.
43	Specific design	IE5 Three phase motor		Protection Against Dry Running Without protection against dry running
44	Type	EXM160B5/4.185DH2		Pump Test Set without certified pumps
45	Rated power	18.5 kW	Rated current 33.5 A	Suction Side Standard suction
46	Nominal speed	3600 rpm	Rated voltage 380 V	Timer Standard
47	Frame size	160	Motor efficiency % 91.9	
48	Weight	kg 77.3	Power factor 0.9	

Remarks	
49	
50	
50	
52	

GHV20/66SVX03G185/4

Performance curve

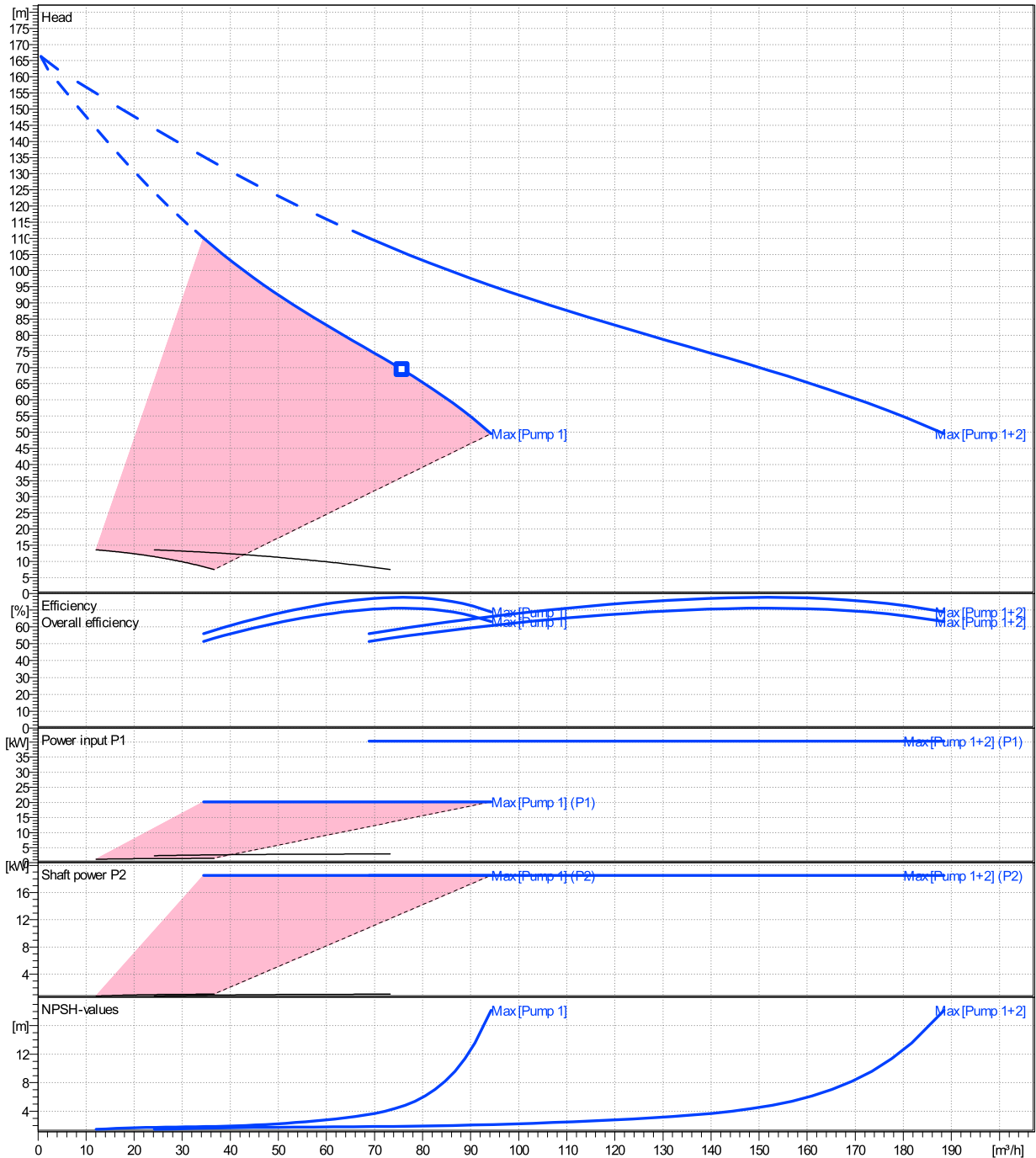
Company name
Contact
Phone number
e-mail address

Ø	Pump capacity			Pump head		Frequency	Hz	50/60
	Operating range	η	η	H(Q=0)	η			
	Min. m³/h	Max. m³/h	Max. m³/h	m	m	Operating speed	rpm	
Max.	34.4	94.2	75.8	166	69.3	Nominal flow	m³/h	0
						Nominal head	m	0
						Inlet pressure	kPa	0
						Static head	m	0

Power datas referred to:

Water, pure [100%] ; 4°C; 1000kg/m³; 1.57mm²/s

hydr. Performance acceptance acc. To EN ISO 9906 Class

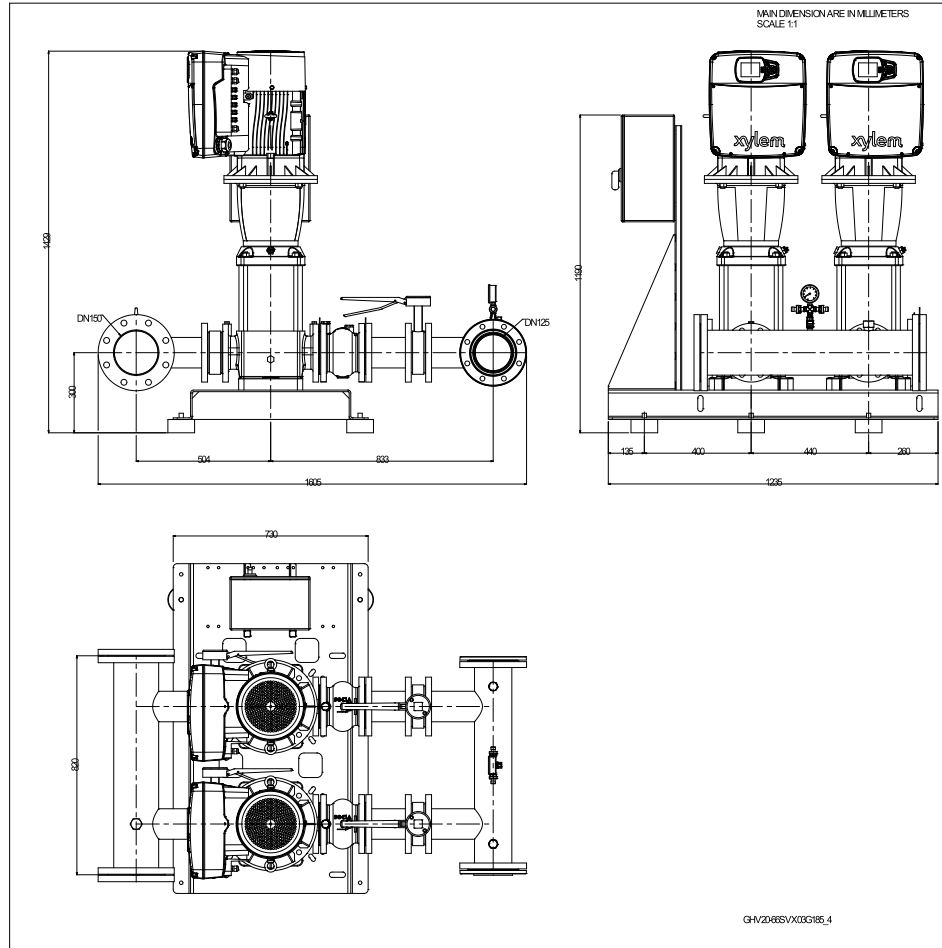


GHV20/66SVX03G185/4

Dimensions

Company name
Contact
Phone number
e-mail address

[X] - Hydrovar X+
EXM160B5/4.185DH2



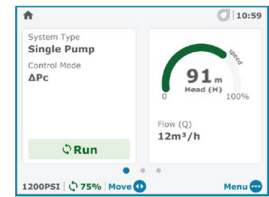
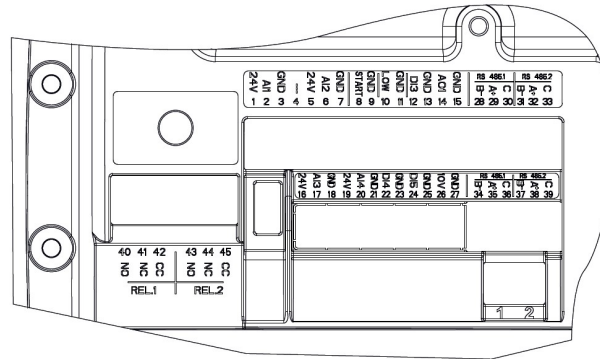
Dimensions [mm]	
A	504
B	833
C	1605
DNA	DN150
DNM	DN125
H	300
H2	1429
Weight	
Total weight	745 kg

Dimensions and weight without obligation

Project	Xylect-22326709	Created by		Last update	5/21/2024
Block	GHV20/66SVX03G185/4	Created on	5/21/2024		

Technical data

Company name
Contact
Phone number
e-mail address



REF.	ITEM	DESCRIPTION	DEFAULT
1		Power supply +24 VDC, max. 60mA (total, terminals 1 + 5)	
2	Analog Input 1	Configurable Analog Input 1	Pressure Sensor 1
3		Electronic GND	
4	Not used	Internal use - Do not connect	
5		Power supply +24 VDC, max. 60mA (total, terminals 1 + 5)	
6	Analog Input 2	Configurable Analog Input 2	Not used
7		Electronic GND	
8	External Start/Stop	Start/Stop digital input, +24 VDC internal pull-up, 6mA contact current	-
9		Electronic GND	
10	External Lack of Water	Low water digital input, +24 VDC internal pull-up, 6mA contact current	-
11		Electronic GND	
12	Digital Input 3	Configurable Digital Input 3, +24 VDC internal pull-up, 6mA contact current	Solo Run
13		Electronic GND	
14	Analog Output	Configurable Analog Output	Motor Speed
15		Electronic GND	
16		Power supply +24 VDC, max. 60mA (total, terminals 16 and 19)	
17	Analog Input 3	Configurable Analog Input 3	Not used
18		Electronic GND	
19		Power supply +24 VDC, max. 60mA (total, terminals 16 and 19)	
20	Analog Input 4	Configurable Analog Input 4	Not used
21		Electronic GND	
22	Digital Input 4	Configurable Digital Input 4, +24 VDC internal pull-up, 6mA contact current	Not used
23		Electronic GND	
24	Digital Input 5	Configurable Digital Input 5, +24 VDC internal pull-up, 6mA contact current	Not used
25		Electronic GND	
26	10 VDC supply	Power supply +10 VDC, max. 3mA	-
27		Electronic GND	
28		RS485 port 1 : RS485-1B N (-)	
29	Communication bus 1	RS485 port 1 : RS485-1A P (+)	Multipump
30		RS485 port 1 : RS485-COM	
31		RS485 port 2 : RS485-2B N (-)	
32	Communication bus 2	RS485 port 2 : RS485-2A P (+)	Modbus
33		RS485 port 2 : RS485-COM	
34		RS485 port 1 : RS485-1B N (-)	
35	Communication bus 1	RS485 port 1 : RS485-1A P (+)	Multipump
36		RS485 port 1 : RS485-COM	
37		RS485 port 2 : RS485-2B N (-)	
38	Communication bus 2	RS485 port 2 : RS485-2A P (+)	Modbus
39		RS485 port 2 : RS485-COM	
40		Configurable relay 1: Normally Open	
41	Relay 1	Configurable relay 1: Normally Closed	Running
42		Configurable relay 1: Common Contact	
43		Configurable relay 2: Normally Open	
44	Relay 2	Configurable relay 2: Normally Closed	Error
45		Configurable relay 2: Common Contact	