

# GHV20/33SVX01G030/4

## Technical data

Company name  
Contact  
Phone number  
e-mail address

| Operating data |                           |                        |    |                           |                          |
|----------------|---------------------------|------------------------|----|---------------------------|--------------------------|
| 1              | Pumpe type                | Single-/Multi-pump set |    | Fluid                     | Water, pure              |
| 2              | No. of pumps              | 2                      |    | Operating temperature t A | °C 4                     |
| 3              | Nominal flow              | l/s                    | 0  | pH-value at t A           | 7                        |
| 4              | Nominal head              | m                      | 0  | Density at t A            | kg/m <sup>3</sup> 1000   |
| 5              | Static head               | m                      | 0  | Vapor pressure at t A     | kPa 100                  |
| 6              | Inlet pressure            | kPa                    | 0  | Kin. viscosity at t A     | mm <sup>2</sup> /s 1.569 |
| 7              | Environmental temperature | °C                     | 20 | Altitude                  | 0                        |
| 8              | Available system NPSH     | m                      | 0  |                           |                          |

| Pump data |                       |                   |       |  |  |
|-----------|-----------------------|-------------------|-------|--|--|
| 9         | Product version       | [X] - Hydrovar X+ |       |  |  |
| 10        | Operating speed       | 3600 rpm          |       |  |  |
| 11        | Stages                | 1                 |       |  |  |
| 12        | Max. working pressure | kPa               | 347.2 |  |  |
| 13        | Head H(Q=0)           | m                 | 35    |  |  |
| 14        | Max. shaft power      | kW                | 7.9   |  |  |
| 15        | Shaft power           | kW                |       |  |  |
| 16        | Power input           | kW                |       |  |  |
| 17        | Efficiency            | %                 |       |  |  |
| 18        | Overall efficiency    | %                 |       |  |  |
| 19        | NPSH 3%               | m                 |       |  |  |
| 20        | Total weight          | kg                | 370.0 |  |  |
| 21        |                       |                   |       |  |  |

| Materials |                              |  |         |  |  |
|-----------|------------------------------|--|---------|--|--|
| Pump      |                              |  | Options |  |  |
| 23        | Manifolds                    | Stainless steel, 1.4301, AISI 304        |         | GHV Non-return valve                             | Non return valve in delivery side            |
| 24        | On-off valves butterfly type | Disc: Epoxy/Gasket: EPDM/Body: Cast Iron |         | Additional Card                                  | No card                                      |
| 25        | Non-return valves            | Painted cast iron with AISI 304 flaps    |         | Analog Device                                    | Standard                                     |
| 26        | Pressure switches            | Galvanized steel/AISI 301                |         | Condensation Resistance                          | Standard                                     |
| 27        | Pressure trasmitters         | AISI 304L & AISI 316L                    |         | Control Dev ices Oversized                       | Standard                                     |
| 28        | Caps/plugs                   | AISI 304 or superior                     |         | Control Panel                                    | Standard                                     |
| 29        | Sliding/Blind flanges        | Galvanized steel                         |         | Control Panel cloud connection                   | Standard without                             |
| 30        | Welded flanges               | Stainless steel, 1.4301, AISI 304        |         | Control Panel Position                           | Standard position                            |
| 31        | Fittings                     | AISI 304 or superior                     |         | Control Panel Protection Degree                  | Standard                                     |
| 32        | Bracket                      | Painted steel                            |         | DACH - Control Panel mounted on                  | Standard                                     |
| 33        | Base                         | Painted steel                            |         | DACH - Optical sensor for lack/presence of water | None   |
| 34        | On-off valves ball type      | Nickel-plated brass                      |         | Control Panel Options                            | Standard                                     |
| 35        |                              |  |         | Delivery Side                                    | Standard delivery                            |
| 36        |                              |  |         | Double Pressure Transmitter                      | Standard                                     |
| 37        |                              |  |         | Electric Pump Special Seals                      | Standard                                     |
| 38        |                              |  |         | Emergency  | Standard                                     |
| 39        |                              |  |         | High Pressure Protection                         | Without high pressure protection on delivery |
| 40        |                              |  |         | N.A.   |  |
| 41        |                              |  |         | N.A.   |  |

| Motor data |                 |                       |                  |                                |  |
|------------|-----------------|-----------------------|------------------|--------------------------------|--|
| 42         | Manufacturer    | Lowara e-XM           |                  | Phase Missing                  | Standard                               |
| 43         | Specific design | IE5 Three phase motor |                  | N.A.                           |  |
| 44         | Type            | EXM100B5/4.030BH2     |                  | Protection Against Dry Running | Without protection against dry running |
| 45         | Rated power     | 3 kW                  | Rated current    | 6.7 A                          | Pump Test                              |
| 46         | Nominal speed   | 3600 rpm              | Rated voltage    | 380 V                          | Suction Side                           |
| 47         | Frame size      | 100                   | Motor efficiency | % 87.8                         | Timer                                  |
| 48         | Weight          | kg 24.7               | Power factor     | 0.86                           | Set without certified pumps            |
|            |                 |                       |                  |                                | Standard suction                       |
|            |                 |                       |                  |                                | Standard                               |

| Remarks |  |  |  |  |  |
|---------|--|--|--|--|--|
| 49      |  |  |  |  |  |
| 50      |  |  |  |  |  |
| 50      |  |  |  |  |  |
| 52      |  |  |  |  |  |

**GHV20/33SVX01G030/4**

**Performance curve**

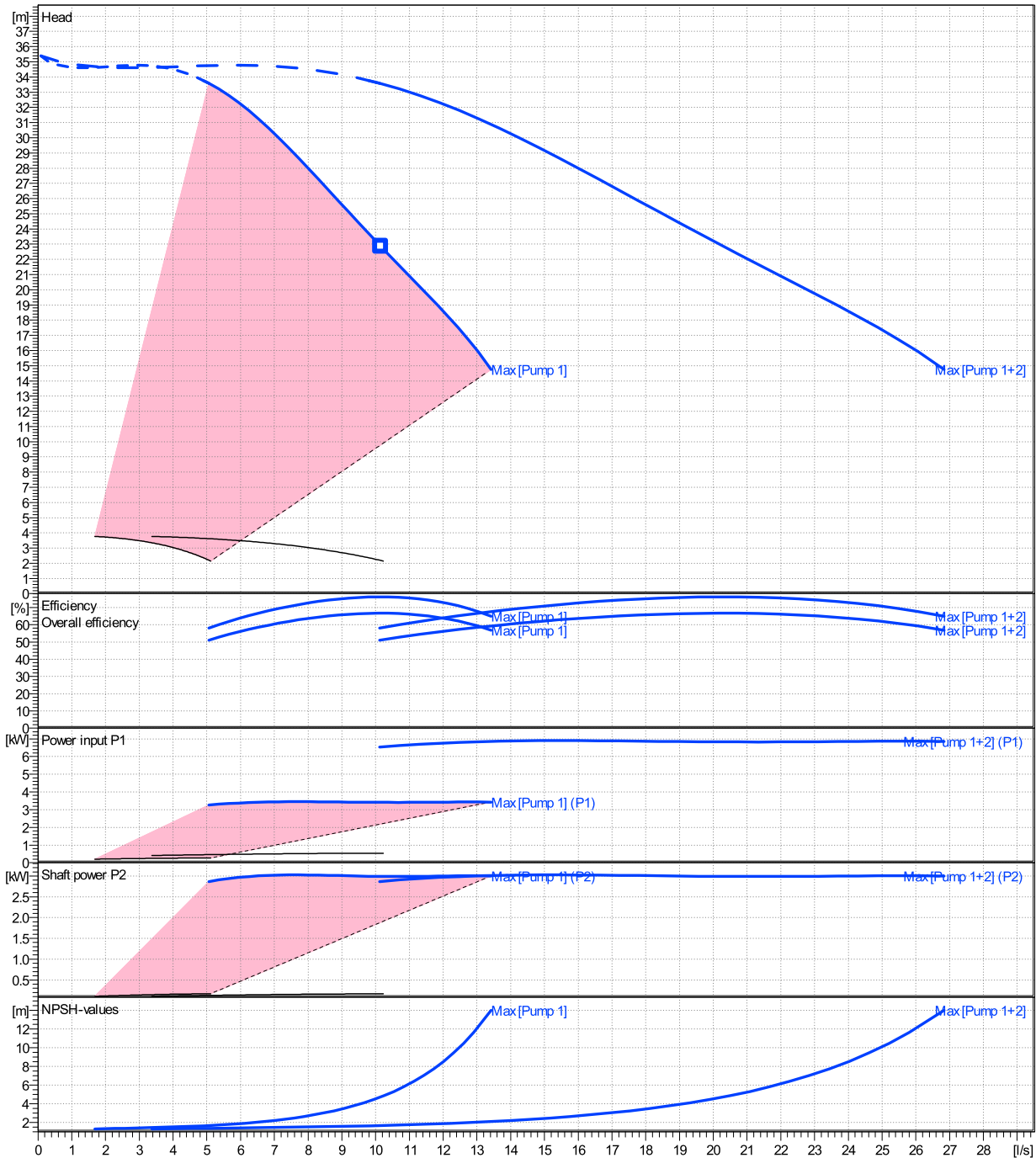
Company name  
Contact  
Phone number  
e-mail address

| Ø    | Pump capacity   |          |          | Pump head |        | Frequency       | Hz  | 50/60 |
|------|-----------------|----------|----------|-----------|--------|-----------------|-----|-------|
|      | Operating range | η        | η        | H(Q=0)    | η      |                 |     |       |
|      | Min. l/s        | Max. l/s | Max. l/s | m         | Max. m | Operating speed | rpm |       |
| Max. | 5.06            | 13.4     | 10.2     | 35.4      | 22.8   | Nominal flow    | l/s | 0     |
|      |                 |          |          |           |        | Nominal head    | m   | 0     |
|      |                 |          |          |           |        | Inlet pressure  | kPa | 0     |
|      |                 |          |          |           |        | Static head     | m   | 0     |

**Power datas referred to:**

Water, pure [100%] ; 4°C; 1000kg/m³; 1.57mm²/s

hydr. Performance acceptance acc. To EN ISO 9906 Class

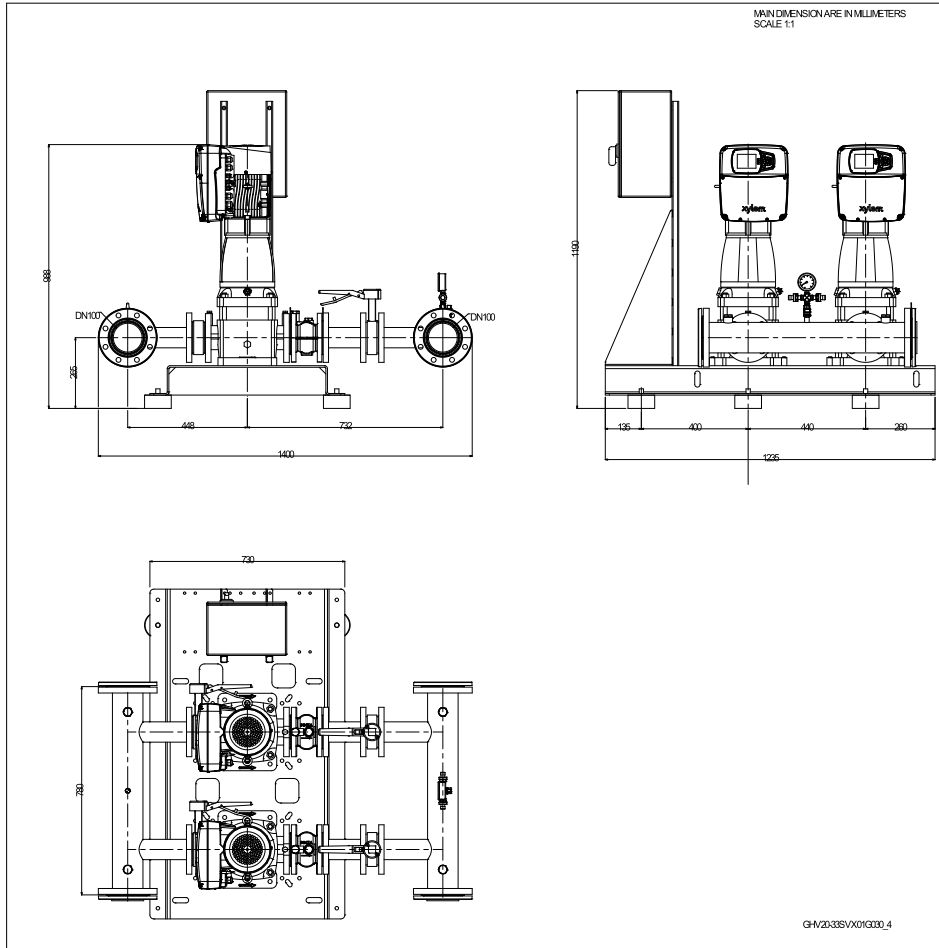


**GHV20/33SVX01G030/4**

**Dimensions**

Company name  
Contact  
Phone number  
e-mail address

[X] - Hydrovar X+  
EXM100B5/4.030BH2



| Dimensions [ mm ] |        |
|-------------------|--------|
| A                 | 448    |
| B                 | 732    |
| C                 | 1400   |
| DNA               | DN100  |
| DNM               | DN100  |
| H                 | 265    |
| H2                | 988    |
| Weight            |        |
| Total weight      | 370 kg |

**Dimensions and weight without obligation**

|         |                     |            |           |             |           |
|---------|---------------------|------------|-----------|-------------|-----------|
| Project | Xylect-22340288     | Created by |           | Last update | 5/23/2024 |
| Block   | GHV20/33SVX01G030/4 | Created on | 5/23/2024 |             |           |

**Technical data**

Company name  
Contact  
Phone number  
e-mail address



| REF. | ITEM                   | DESCRIPTION   | DEFAULT           |
|------|------------------------|---|-------------------|
| 1    |                        | Power supply +24 VDC, max. 60mA (total, terminals 1 + 5)                    |                   |
| 2    | Analog Input 1         | Configurable Analog Input 1   | Pressure Sensor 1 |
| 3    |                        | Electronic GND  |                   |
| 4    | Not used               | Internal use - Do not connect   |                   |
| 5    |                        | Power supply +24 VDC, max. 60mA (total, terminals 1 + 5)                    |                   |
| 6    | Analog Input 2         | Configurable Analog Input 2   | Not used          |
| 7    |                        | Electronic GND  |                   |
| 8    | External Start/Stop    | Start/Stop digital input, +24 VDC internal pull-up, 6mA contact current     | -                 |
| 9    |                        | Electronic GND  |                   |
| 10   | External Lack of Water | Low water digital input, +24 VDC internal pull-up, 6mA contact current      | -                 |
| 11   |                        | Electronic GND  |                   |
| 12   | Digital Input 3        | Configurable Digital Input 3, +24 VDC internal pull-up, 6mA contact current | Solo Run          |
| 13   |                        | Electronic GND  |                   |
| 14   | Analog Output          | Configurable Analog Output  | Motor Speed       |
| 15   |                        | Electronic GND  |                   |
| 16   |                        | Power supply +24 VDC, max. 60mA (total, terminals 16 and 19)                |                   |
| 17   | Analog Input 3         | Configurable Analog Input 3   | Not used          |
| 18   |                        | Electronic GND  |                   |
| 19   |                        | Power supply +24 VDC, max. 60mA (total, terminals 16 and 19)                |                   |
| 20   | Analog Input 4         | Configurable Analog Input 4   | Not used          |
| 21   |                        | Electronic GND  |                   |
| 22   | Digital Input 4        | Configurable Digital Input 4, +24 VDC internal pull-up, 6mA contact current | Not used          |
| 23   |                        | Electronic GND  |                   |
| 24   | Digital Input 5        | Configurable Digital Input 5, +24 VDC internal pull-up, 6mA contact current | Not used          |
| 25   |                        | Electronic GND  |                   |
| 26   | 10 VDC supply          | Power supply +10 VDC, max. 3mA  | -                 |
| 27   |                        | Electronic GND  |                   |
| 28   |                        | RS485 port 1 : RS485-1B N (-)   |                   |
| 29   | Communication bus 1    | RS485 port 1 : RS485-1A P (+)   | Multipump         |
| 30   |                        | RS485 port 1 : RS485-COM  |                   |
| 31   |                        | RS485 port 2 : RS485-2B N (-)   |                   |
| 32   | Communication bus 2    | RS485 port 2 : RS485-2A P (+)   | Modbus            |
| 33   |                        | RS485 port 2 : RS485-COM  |                   |
| 34   |                        | RS485 port 1 : RS485-1B N (-)   |                   |
| 35   | Communication bus 1    | RS485 port 1 : RS485-1A P (+)   | Multipump         |
| 36   |                        | RS485 port 1 : RS485-COM  |                   |
| 37   |                        | RS485 port 2 : RS485-2B N (-)   |                   |
| 38   | Communication bus 2    | RS485 port 2 : RS485-2A P (+)   | Modbus            |
| 39   |                        | RS485 port 2 : RS485-COM  |                   |
| 40   |                        | Configurable relay 1: Normally Open   |                   |
| 41   | Relay 1                | Configurable relay 1: Normally Closed                                       | Running           |
| 42   |                        | Configurable relay 1: Common Contact  |                   |
| 43   |                        | Configurable relay 2: Normally Open   |                   |
| 44   | Relay 2                | Configurable relay 2: Normally Closed                                       | Error             |
| 45   |                        | Configurable relay 2: Common Contact  |                   |