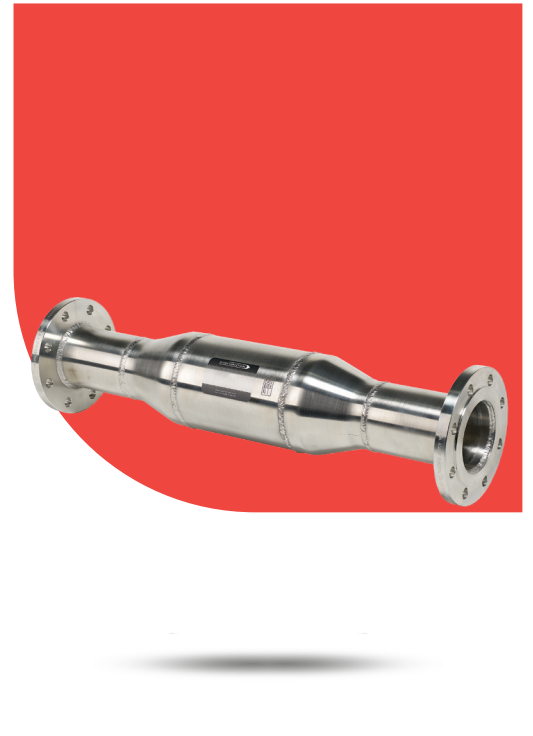


STUART

Water Conditioner CM

Developed specifically for commercial and industrial applications, the Stuart Water Conditioner CM combines a unique catalytic alloy core with an array of powerful magnets to effectively prevent hard limescale deposits from forming. Available in a range of sizes optimised to meet the flow rate requirements of commercial properties, industrial plant and processes, they offer a maintenance free solution and are simply installed in-line with the existing pipework.



Features

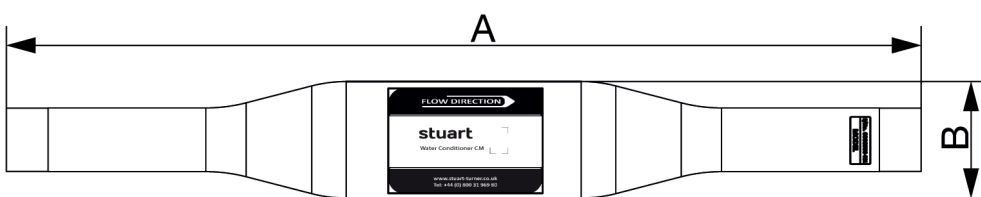
- Prevents limescale build up – maximises appliance efficiency and reduces energy costs
- Reduces maintenance requirements, minimising costs and maximising up-time
- Maximum pressure drop 2%
- Compact design – easy to install in any orientation
- Environmentally friendly, does not use chemicals or salts
- Treated water is safe to drink
- No electrical power required
- 10 year guarantee
- Available in a range of sizes and flow rates

Applications

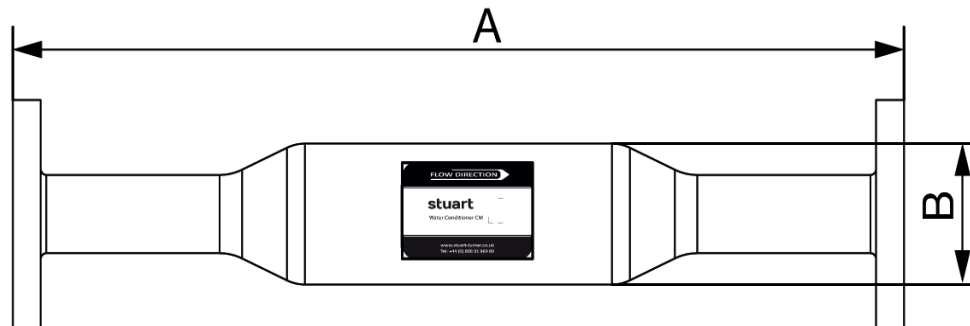
- Available in a range of sizes optimised to meet the flow rate requirements of residential properties
- Installed inline with the incoming mains water supply just after the stopcock
- Stuart Water Conditioner products can play an effective role in achieving compliance with Part L of the Building Regulations

Model	Water Conditioner CM23-45 44735	Water Conditioner CM46-75 44737	Water Conditioner CM76-115 44728	Water Conditioner CM116-170 44729
Warranty	10 years			
Conformity Certification	UK CA / CE			
Type	Catalytic-magnetic	Catalytic-magnetic	Catalytic-magnetic	Catalytic-magnetic
Optimum flow*	23-45 l/min	46-75 l/min	76-115 l/min	116-170 l/min
Maximum pressure	16 bar			
Housing	Stainless steel			
Connection type	BSP Male	BSP Male	BSP Male	BSP Male
Connection size	3/4 "	1 "	1 1/4 "	1 1/2 "
Typical noise	Silent			
Width	400 mm	550 mm	550 mm	
Diameter	60 mm	73 mm	73 mm	89 mm
Weight	4.9 Kg	6.0 Kg	6.5 Kg	8.0 Kg

Model	Water Conditioner CM171-265 44632	Water Conditioner CM266-360 44730	Water Conditioner CM361-685 44731	Water Conditioner CM686-1260 44732
Warranty	10 years			
Conformity Certification	UK CA / CE			
Type	Catalytic-magnetic	Catalytic-magnetic	Catalytic-magnetic	Catalytic-magnetic
Optimum flow*	171-265 l/min	266-360 l/min	361-685 l/min	686-1260 l/min
Maximum pressure	16 bar			
Housing	Stainless steel			
Connection type	BSP Male	PN16 Flange	PN16 Flange	PN16 Flange
Connection size	2 "	65 mm	80 mm	100 mm
Typical noise	Silent			
Width	550 mm	800 mm	850 mm	
Diameter	114 mm		141 mm	168 mm
Weight	10.0 Kg	18.0 Kg	30.0 Kg	46.0 Kg



CM23-45, CM46-75, CM76-115, CM116-170, CM171-265 models



CM266-360, CM361-685, CM686-1260 models

Model	Dim. 'A'	Dim. 'B'
CM23-45	400 mm	60 mm
CM46-75	550 mm	73 mm
CM76-115	550 mm	73 mm
CM116-170		89 mm
CM171-265	800 mm	114 mm
CM266-360		114 mm
CM361-685	850 mm	141 mm
CM686-1260		168 mm

Stuart Turner Limited reserves the right to amend specifications without notice.

Stuart Turner Ltd, Henley-on-Thames, Oxfordshire RG9 2AD Tel: +44 (0) 1491 572655 Fax: +44 (0) 1491 573704

TechAssist Helpline +44 (0) 800 31 969 80

www.stuart-turner.co.uk

Pt. No. 20527 Issue 2922-03-01