

# LNTS 100-250/370/L25VCC4

## Technical data

Company name  
Contact  
Phone number  
e-mail address

Operating data						
1	Pumpe type	Single head pump		Fluid	Water, pure	
2	No. of pumps	1		Operating temperature t A	°C	4
3	Nominal flow	m <sup>3</sup> /h	0	Max / Min Operating Temperature mech. Seal	°C	120 / -25
4	Nominal head	m	0	pH-value at t A		7
5	Static head	m	0	Density at t A	kg/m <sup>3</sup>	1000
6	Inlet pressure	kPa	0	Kin. viscosity at t A	mm <sup>2</sup> /s	1.569
7	Environmental temperature	°C	20	Vapor pressure at t A	kPa	100
8	Available system NPSH	m	0	Altitude		0

Pump data						
9	Lubrication	Standard, Grease lubrication [Std]				
10	Execution	2 poles motor				
11	Design	In-Line single twin head				Impeller Ø
12	Operating speed	2900 rpm	Stages	1		Max. mm 214
13	Suction nozzle	DN 100 /	PN 16 /	EN1092-2		designed mm 214
14	Discharge nozzle	DN 100 /	PN 16 /	EN1092-2		Min. mm 214
15	Max. casing pressure	kPa				Nominal m <sup>3</sup> /h
16	Max. working pressure	kPa	618.2			Max- m <sup>3</sup> /h 217.5
17	Impeller type	Radial impeller				Min- m <sup>3</sup> /h 67
18	Head H(Q=0)	m	63			Head at Qmax m 44
19	Max. shaft power	kW	35.4			at Qmin m 60.4
20	Pump weight	kg				Shaft power kW
21	Total weight	kg	487.0			Efficiency %
						NPSH 3% m

Materials						
22		Pump			Shaft Seal	
23	Volute Casing	Cast Iron			Single mechanical seal, without shaft sleeve	
24	Casing Cover	Cast Iron			eMG12 - Ø38mm	BQ7EGG-WA
25	Impeller	Cast iron / ASTM Class 30			Mechanical seal diameter	38 mm
26	Stub shaft	Stainless steel / AISI 431			1. Rotating ring	Carbon graphite resin impregnated
27	Wear ring	Stainless steel / AISI 304			2. Stationary ring	SiC, silicon carbide, sintered press.less
28	Impeller lock nut and washer	Stainless steel / AISI 304			3. Secondary seal	Ethylene propylene rubber (EPDM)
29	Impeller key	Stainless steel / AISI 316L			4. Springs	CrNiMo - Steel
30	Fill and draing plugs	Stainless steel / AISI 303			5. Others	EPDM - WRAS
31					Gaskets of the pump	Ethylene propylene rubber (EPDM)
32						
33						
34						
35						
36						
37						
38						
39						
40						
41						

Motor data					
Electrical and dimensional data refer to IE3 motor					
42	Manufacturer	Lowara			
43	Specific design	IE3 3ph Flange Motor - Premium Efficiency			
44	Type	3MAS 200 L B5 37 kW			
45	Rated power	37 kW	Rated current	64.5 A	
46	Nominal speed	2955 rpm	Rated voltage	400 V	
47	Frame size	200 L	Service factor	1	
48	Weight	kg 212.0	Degree of protection	IP55	

Remarks					
49					
50					
50					
52					

Project	Xylect-20969585	Created by		Last update	8/8/2023
Block	LNTS 100-250/370/L25VCC4	Created on	8/8/2023		

# LNTS 100-250/370/L25VCC4

## Performance curve

Company name  
Contact  
Phone number  
e-mail address

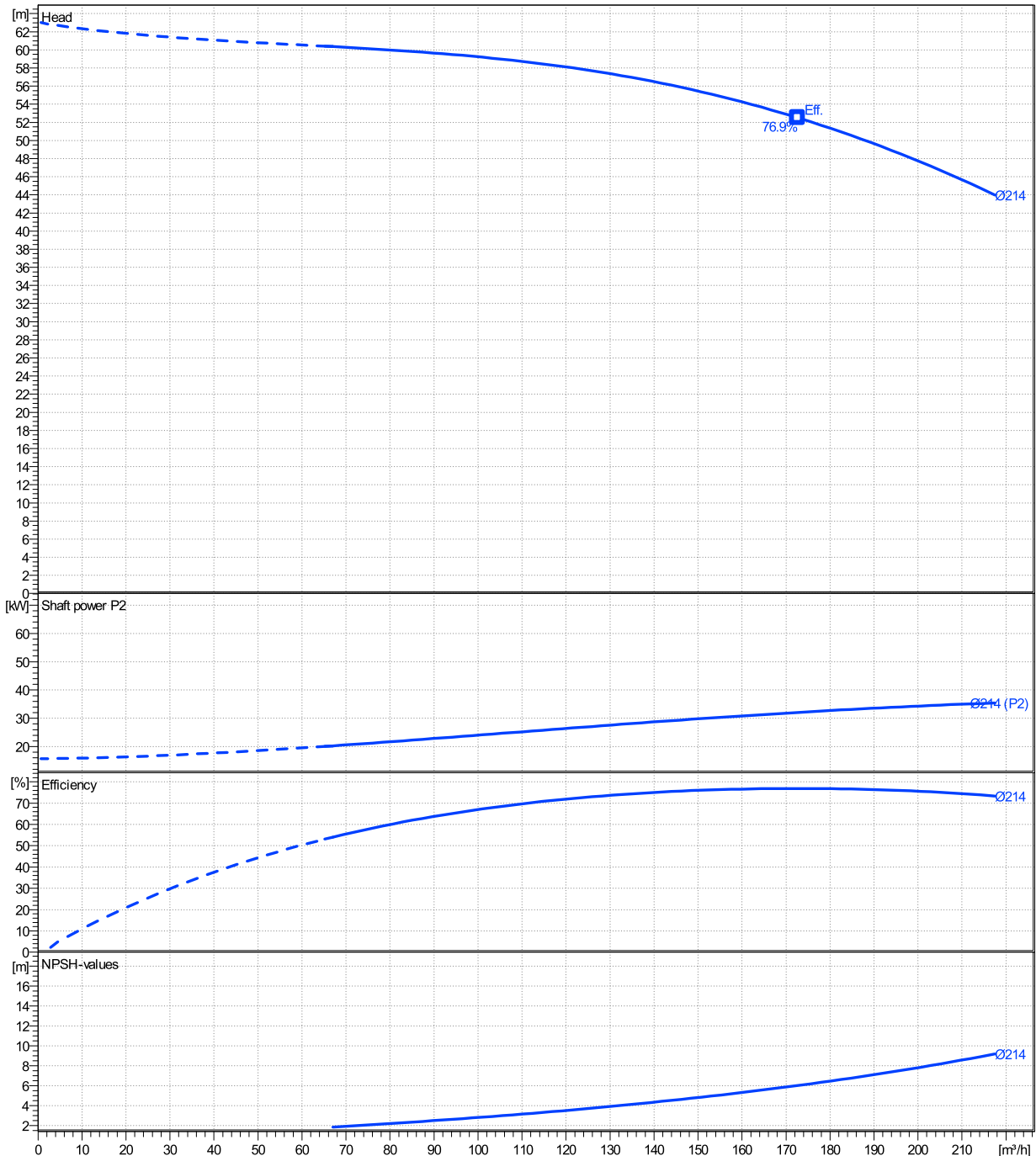
	Ø mm	Pump capacity			Pump head		Shaft power P2			Frequency	
		Operating range Min. m³/h	Max. m³/h	η Max. m³/h	H(Q=0) m	η Max. m	P2(Q=0) kW	Max. kW	η Max. kW	Hz	
actual	214	67	218	173	63	52.5	35.4	32.1	50	2900	
Min.	0	/	/	173	63	52.5	/	32.1		0	
Max.	214	/	/	173	63	52.5	/	32.1		0	
									Operating speed	rpm	2900
									Nominal flow	m³/h	0
									Nominal head	m	0
									Inlet pressure	kPa	0
									Static head	m	0

**Power datas referred to:**

hydr. Performance acceptance acc. To EN ISO 9906 Class Grade 3B

Water, pure [100%] ; 4°C; 1000kg/m³; 1.57mm²/s

MEI: N.A - according to Ecodesign Directive 2009/125/EC and Regulation (EU) No.547/2012



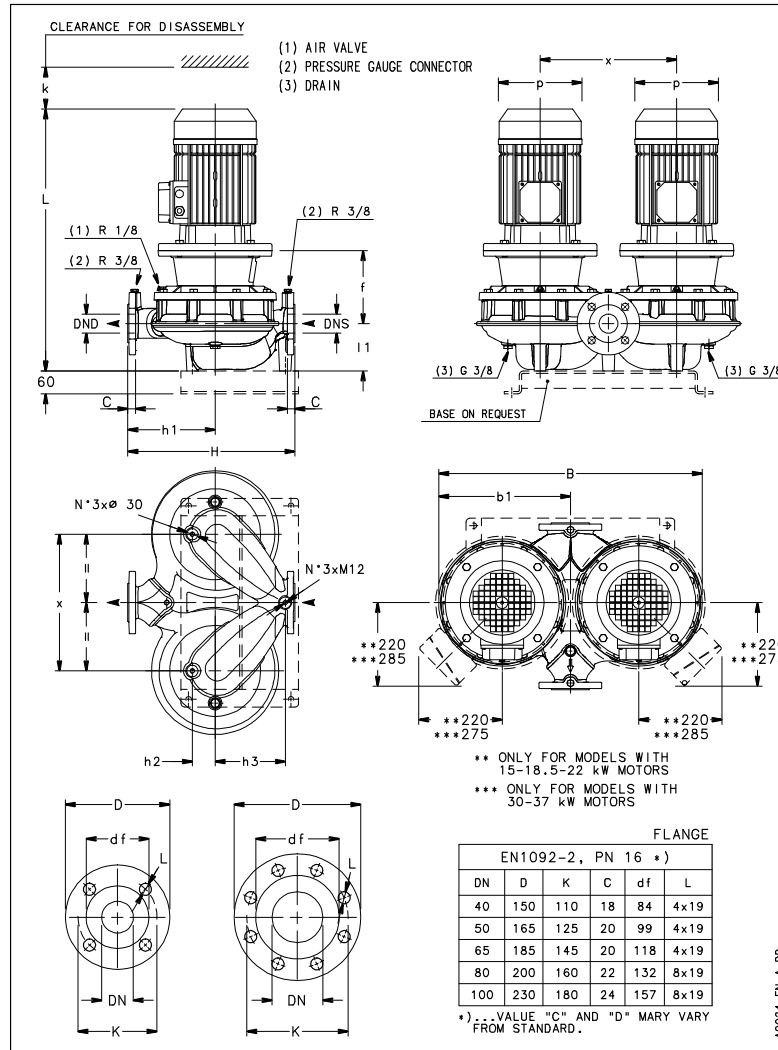
# LNTS 100-250/370/L25VCC4

# Dimensions

Company name  
Contact  
Phone number  
e-mail address

Rigid coupling  
2 poles motor  
3MAS 200 L B5 37 kW

Electrical and dimensional data refer to IE3 motor



## Dimensions [ mm ]

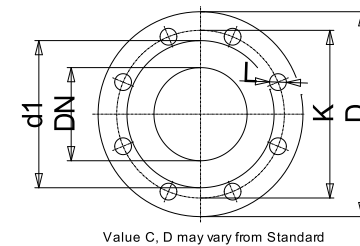
B	783
b1	381
DNd	100
DNs	100
f	246
H	550
h1	300
h2	90
h3	160
k	152
L	1096
l1	179
p	408
x	420

## Weight

Total weight	487 kg
--------------	--------

## Connections

Suction nozzle		Discharge nozzle	
DN 100		DN 100	
PN 16		PN 16	
EN1092-2		EN1092-2	
C	24	C	24
D	230	D	230
df	157	df	157
DN	100	DN	100
K	180	K	180
L	8 x 19	L	8 x 19



### Dimensions and weight without obligation

Project	Xylect-20969585
Block	LNTS 100-250/370/L25VCC4

Created by  
Created on 8/8/2023

Last update 8/8/2023