

LNTS 100-200/370/L25VCC4

Technical data

Company name
Contact
Phone number
e-mail address

Operating data					
1	Pumpe type	Single head pump		Fluid	Water, pure
2	No. of pumps	1		Operating temperature t A	°C 4
3	Nominal flow	m ³ /h	0	Max / Min Operating Temperature mech. Seal	°C 120 / -25
4	Nominal head	m	0	pH-value at t A	7
5	Static head	m	0	Density at t A	kg/m ³ 1000
6	Inlet pressure	kPa	0	Kin. viscosity at t A	mm ² /s 1.569
7	Environmental temperature	°C	20	Vapor pressure at t A	kPa 100
8	Available system NPSH	m	0	Altitude	0

Pump data					
9	Lubrication	Standard, Grease lubrication [Std]			
10	Execution	2 poles motor			
11	Design	In-Line single twin head			
12	Operating speed	2900 rpm	Stages	1	
13	Suction nozzle	DN 100 /	PN 16 /	EN1092-2	
14	Discharge nozzle	DN 100 /	PN 16 /	EN1092-2	
15	Max. casing pressure	kPa		Impeller Ø	Max. mm 208
16	Max. working pressure	kPa	564		designed mm 208
17	Impeller type	Radial impeller			Min. mm 181
18	Head H(Q=0)	m	58	Flow	Nominal m ³ /h
19	Max. shaft power	kW	34.9		Max- m ³ /h 275
20	Pump weight	kg			Min- m ³ /h 50
21	Total weight	kg	487.0	Head	Nominal m
					at Qmax m 29.9
				at Qmin m 56.3	
				Shaft power	kW
				Efficiency	%
				NPSH 3%	m

Materials					
22		Pump		Shaft Seal	
23	Volute Casing	Cast Iron		Single mechanical seal, without shaft sleeve	
24	Casing Cover	Cast Iron		eMG12 - Ø38mm	BQ7EGG-WA
25	Impeller	Cast iron / ASTM Class 30		Mechanical seal diameter	38 mm
26	Stub shaft	Stainless steel / AISI 431		1. Rotating ring	Carbon graphite resin impregnated
27	Wear ring	Stainless steel / AISI 304		2. Stationary ring	SiC, silicon carbide, sintered press.less
28	Impeller lock nut and washer	Stainless steel / AISI 304		3. Secondary seal	Ethylene propylene rubber (EPDM)
29	Impeller key	Stainless steel / AISI 316L		4. Springs	CrNiMo - Steel
30	Fill and draing plugs	Stainless steel / AISI 303		5. Others	EPDM - WRAS
31				Gaskets of the pump	Ethylene propylene rubber (EPDM)
32					
33					
34					
35					
36					
37					
38					
39					
40					
41					

Motor data					
Electrical and dimensional data refer to IE3 motor					
42	Manufacturer	Lowara			
43	Specific design	IE3 3ph Flange Motor - Premium Efficiency			
44	Type	3MAS 200 L B5 37 kW			
45	Rated power	37 kW	Rated current	64.5 A	
46	Nominal speed	2955 rpm	Rated voltage	400 V	
47	Frame size	200 L	Service factor	1	
48	Weight	kg 212.0	Degree of protection	IP55	

Remarks					
49					
50					
50					
52					

LNTS 100-200/370/L25VCC4

Performance curve

Company name
Contact
Phone number
e-mail address

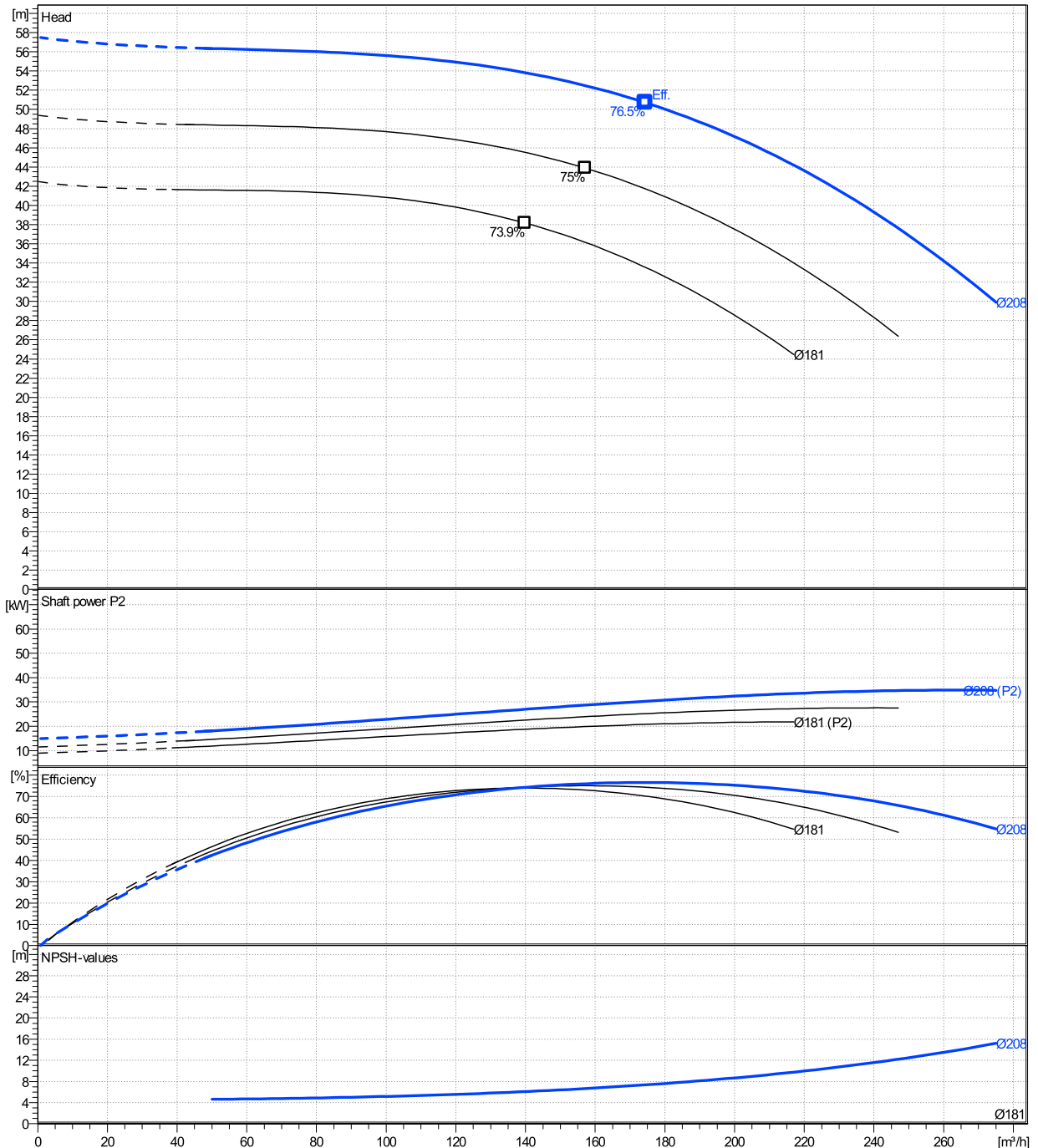
	Ø mm	Pump capacity			Pump head		Shaft power P2			Frequency	Hz	50
		Operating range Min. m³/h	Max. m³/h	η Max. m³/h	H(Q=0) m	η Max. m	P2(Q=0) kW	Max. kW	η Max. kW	Operating speed	rpm	2900
actual	208	50	275	174	57.5	50.7	34.9	30.3	Nominal flow	m³/h	0	
Min.	0	/	/	140	42.5	38.2	/	18.8	Nominal head	m	0	
Max.	208	/	/	174	57.5	50.7	/	30.3	Inlet pressure	kPa	0	
									Static head	m	0	

Power datas referred to:

hydr. Performance acceptance acc. To EN ISO 9906 Class Grade 3B

Water, pure [100%] ; 4°C; 1000kg/m³; 1.57mm²/s

MEI: N.A - according to Ecodesign Directive 2009/125/EC and Regulation (EU) No.547/2012



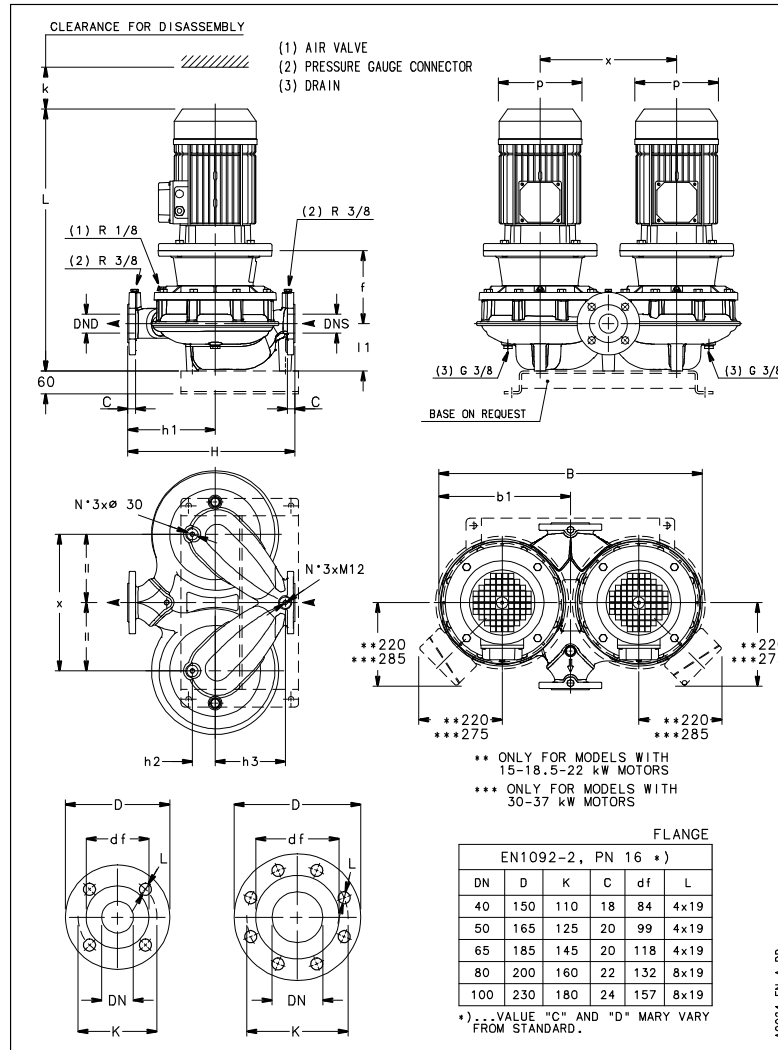
LNTS 100-200/370/L25VCC4

Dimensions

Company name
Contact
Phone number
e-mail address

Rigid coupling
2 poles motor
3MAS 200 L B5 37 kW

Electrical and dimensional data refer to IE3 motor



Dimensions [mm]

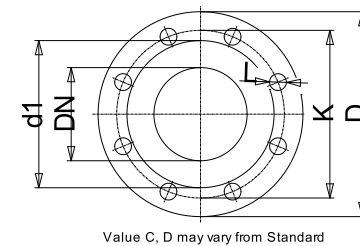
B	783
b1	381
DNd	100
DNs	100
f	246
H	550
h1	300
h2	90
h3	160
k	152
L	1096
l1	179
p	408
x	420

Weight

Total weight	487 kg
--------------	--------

Connections

Suction nozzle		Discharge nozzle	
DN 100		DN 100	
PN 16		PN 16	
EN1092-2		EN1092-2	
C	24	C	24
D	230	D	230
df	157	df	157
DN	100	DN	100
K	180	K	180
L	8 x 19	L	8 x 19



Dimensions and weight without obligation

Project	Xylect-20969572
Block	LNTS 100-200/370/L25VCC4

Created by
Created on 8/8/2023

Last update 8/8/2023