

LNTS 80-250/300/L25VCC4

Technical data

Company name
Contact
Phone number
e-mail address

Operating data						
1	Pumpe type	Single head pump		Fluid	Water, pure	
2	No. of pumps	1		Operating temperature t A	°C	4
3	Nominal flow	m ³ /h	0	Max / Min Operating Temperature mech. Seal	°C	120 / -25
4	Nominal head	m	0	pH-value at t A		7
5	Static head	m	0	Density at t A	kg/m ³	1000
6	Inlet pressure	kPa	0	Kin. viscosity at t A	mm ² /s	1.569
7	Environmental temperature	°C	20	Vapor pressure at t A	kPa	100
8	Available system NPSH	m	0	Altitude		0

Pump data						
9	Lubrication	Standard, Grease lubrication [Std]				
10	Execution	2 poles motor				
11	Design	In-Line single twin head				Impeller Ø
12	Operating speed	2900 rpm	Stages	1		
13	Suction nozzle	DN 80	/	PN 16	/	EN1092-2
14	Discharge nozzle	DN 80	/	PN 16	/	EN1092-2
15	Max. casing pressure	kPa				Flow
16	Max. working pressure	kPa	622.4			
17	Impeller type	Radial impeller				Head
18	Head H(Q=0)	m	63			
19	Max. shaft power	kW	30			Shaft power
20	Pump weight	kg				
21	Total weight	kg	489.0			NPSH 3%
						Max.
						designed
						Min.
						Nominal
						Max-
						Min-
						Nominal
						at Qmax
						at Qmin
						Efficiency
						NPSH 3%

Materials						
Pump			Shaft Seal			
22				Single mechanical seal, without shaft sleeve		
23	Volute Casing	Cast Iron		eMG12 - Ø38mm		BQ7EGG-WA
24	Casing Cover	Cast Iron		Mechanical seal diameter		38 mm
25	Impeller	Cast iron / ASTM Class 30		1. Rotating ring		Carbon graphite resin impregnated
26	Stub shaft	Stainless steel / AISI 431		2. Stationary ring		SiC, silicon carbide, sintered press.less
27	Wear ring	Stainless steel / AISI 304		3. Secondary seal		Ethylene propylene rubber (EPDM)
28	Impeller lock nut and washer	Stainless steel / AISI 304		4. Springs		CrNiMo - Steel
29	Impeller key	Stainless steel / AISI 316L		5. Others		EPDM - WRAS
30	Fill and draing plugs	Stainless steel / AISI 303		Gaskets of the pump		Ethylene propylene rubber (EPDM)
31						
32						
33						
34						
35						
36						
37						
38						
39						
40						
41						

Motor data					
Electrical and dimensional data refer to IE3 motor					
42	Manufacturer	Lowara			
43	Specific design	IE3 3ph Flange Motor - Premium Efficiency			
44	Type	3MAS 200 L B5 30 kW			
45	Rated power	30 kW	Rated current	52.7 A	
46	Nominal speed	2960 rpm	Rated voltage	400 V	
47	Frame size	200 L	Service factor	1	
48	Weight	kg 197.0	Degree of protection	IP55	

Remarks					
49					
50					
50					
52					

LNTS 80-250/300/L25VCC4

Performance curve

Company name
Contact
Phone number
e-mail address

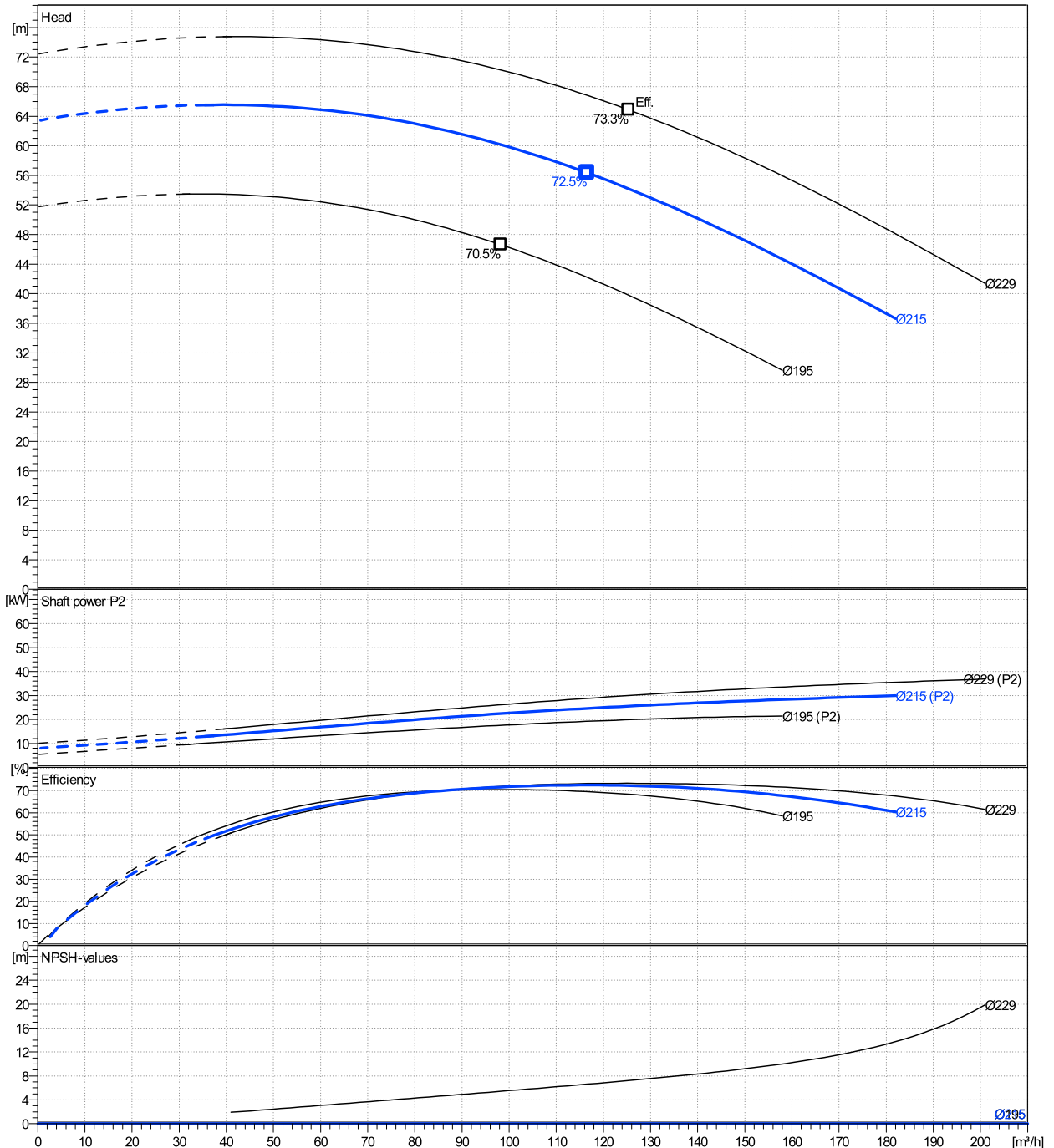
	Ø mm	Pump capacity			Pump head		Shaft power P2			Frequency	Hz	50
		Operating range Min. m³/h	Max. m³/h	η Max. m³/h	H(Q=0) m	η Max. m	P2(Q=0) kW	Max. kW	η Max. kW	Operating speed	rpm	2900
actual	215	37.3	182	117	63.5	56.4		30	24.6	Nominal flow	m³/h	0
Min.	0	/	/	98.2	51.8	46.6		/	17.6	Nominal head	m	0
Max.	229	/	/	125	72.4	64.9		/	30	Inlet pressure	kPa	0
										Static head	m	0

Power datas referred to:

hydr. Performance acceptance acc. To EN ISO 9906 Class Grade 3B

Water, pure [100%] ; 4°C; 1000kg/m³; 1.57mm²/s

MEI: N.A - according to Ecodesign Directive 2009/125/EC and Regulation (EU) No.547/2012



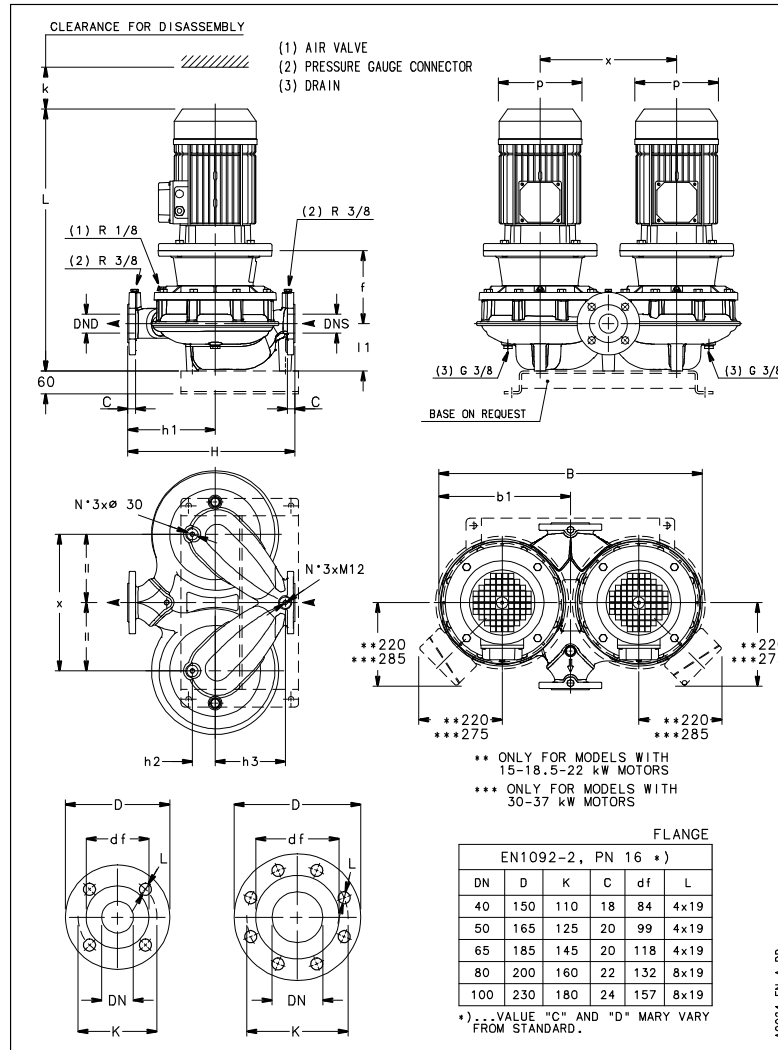
LNTS 80-250/300/L25VCC4

Dimensions

Company name
Contact
Phone number
e-mail address

Rigid coupling
2 poles motor
3MAS 200 L B5 30 kW

Electrical and dimensional data refer to IE3 motor



Dimensions [mm]

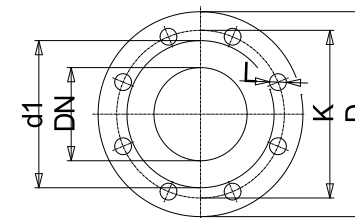
B	766
b1	377.5
DNd	80
DNs	80
f	246
H	500
h1	275
h2	85
h3	140
k	130
L	1049
l1	132
p	408
x	420

Weight

Total weight	489 kg
--------------	--------

Connections

Suction nozzle		Discharge nozzle	
DN 80		DN 80	
PN 16		PN 16	
EN1092-2		EN1092-2	
C	22	C	22
D	200	D	200
df	132	df	132
DN	80	DN	80
K	160	K	160
L	8 x 19	L	8 x 19



Value C, D may vary from Standard

Dimensions and weight without obligation

Project Xylect-20969538
Block LNTS 80-250/370/L25VCC4

Created by
Created on 8/8/2023

Last update 8/8/2023