

LNTS 80-200/110/P25VCC4

Technical data

Company name
Contact
Phone number
e-mail address

Operating data				
1	Pumpe type	Single head pump	Fluid	Water, pure
2	No. of pumps	1	Operating temperature t A	°C 4
3	Nominal flow	m ³ /h 0	Max / Min Operating Temperature mech. Seal	°C 120 / -25
4	Nominal head	m 0	pH-value at t A	7
5	Static head	m 0	Density at t A	kg/m ³ 1000
6	Inlet pressure	kPa 0	Kin. viscosity at t A	mm ² /s 1.569
7	Environmental temperature	°C 20	Vapor pressure at t A	kPa 100
8	Available system NPSH	m 0	Altitude	0

Pump data				
9	Lubrication	Standard, Grease lubrication [Std]		
10	Execution	2 poles motor		
11	Design	In-Line single twin head		
12	Operating speed	2900 rpm	Stages	1
13	Suction nozzle	DN 80 /	PN 16 /	EN1092-2
14	Discharge nozzle	DN 80 /	PN 16 /	EN1092-2
15	Max. casing pressure	kPa		
16	Max. working pressure	kPa	349.9	
17	Impeller type	Radial impeller		
18	Head H(Q=0)	m	36	
19	Max. shaft power	kW	11	
20	Pump weight	kg		
21	Total weight	kg	259.0	

Parameter	Value	Unit
Impeller Ø	Max. designed	mm 220
	Min.	mm 165
Flow	Nominal	m ³ /h
	Max-Min	m ³ /h 114
Head	Nominal	m
	at Qmax	m 20
	at Qmin	m 36
Shaft power		kW
Efficiency		%
NPSH 3%		m

Materials				
22		Pump	Shaft Seal	
23	Volute Casing	Cast Iron	Single mechanical seal, without shaft sleeve	
24	Casing Cover	Cast Iron	eMG12 - Ø28mm	BQ7EGG-WA
25	Impeller	Cast iron / ASTM Class 30	Mechanical seal diameter	28 mm
26	Stub shaft	Stainless steel / AISI 431	1. Rotating ring	Carbon graphite resin impregnated
27	Wear ring	Stainless steel / AISI 304	2. Stationary ring	SiC, silicon carbide, sintered press. less
28	Impeller lock nut and washer	Stainless steel / AISI 304	3. Secondary seal	Ethylene propylene rubber (EPDM)
29	Impeller key	Stainless steel / AISI 316L	4. Springs	CrNiMo - Steel
30	Fill and draing plugs	Stainless steel / AISI 303	5. Others	EPDM - WRAS
31			Gaskets of the pump	Ethylene propylene rubber (EPDM)
32				
33				
34				
35				
36				
37				
38				
39				
40				
41				

Motor data				
Electrical and dimensional data refer to IE3 motor				
42	Manufacturer	Lowara		
43	Specific design	IE3 3ph Flange Motor - Premium Efficiency		
44	Type	PLM 160 B5 11 kW		
45	Rated power	11 kW	Rated current	20.2 A
46	Nominal speed	2910 rpm	Rated voltage	400 V
47	Frame size	160	Service factor	1
48	Weight	kg 70.4	Degree of protection	IP55

Remarks				
49				
50				
50				
52				

LNTS 80-200/110/P25VCC4

Performance curve

Company name
Contact
Phone number
e-mail address

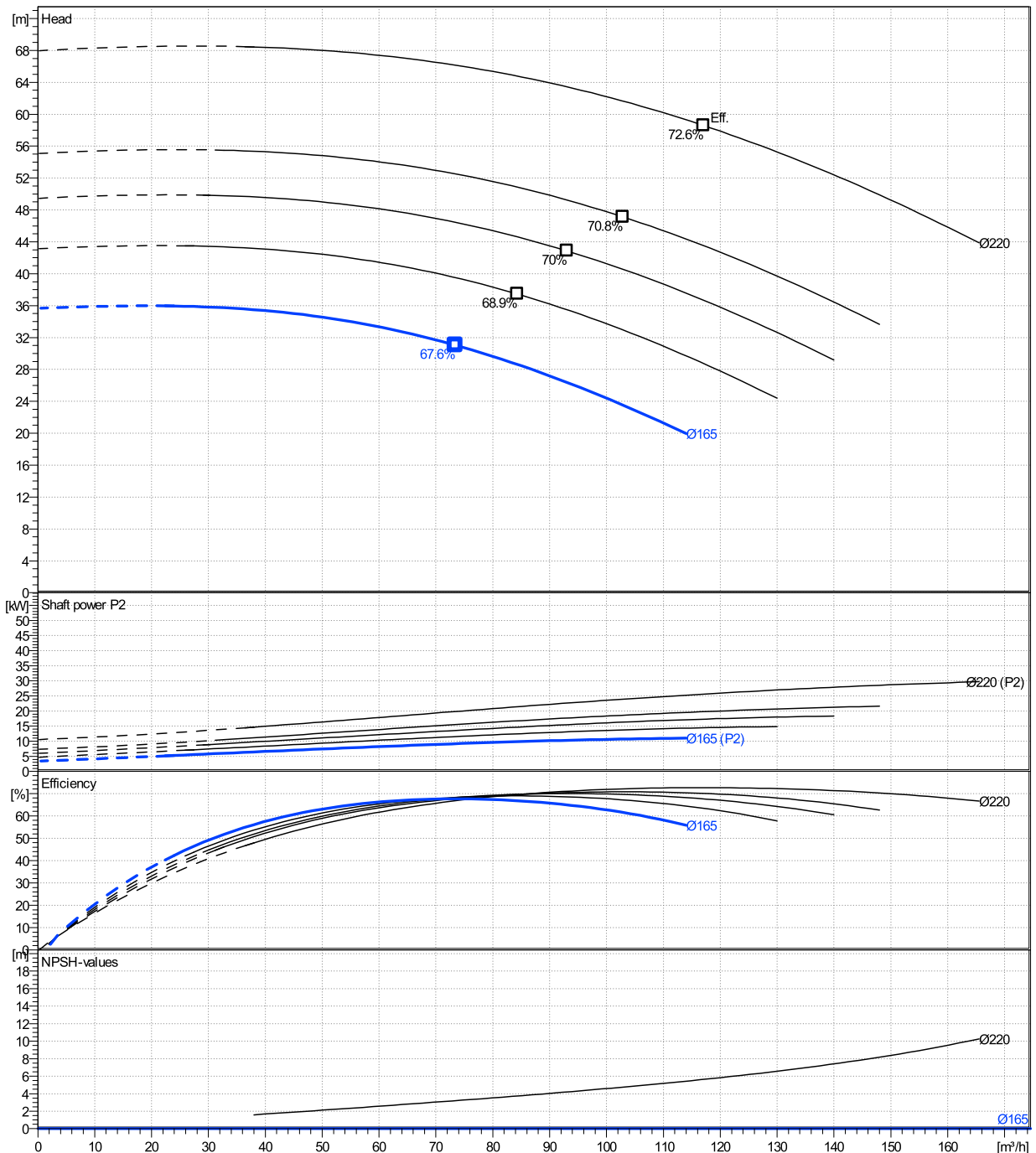
	Ø mm	Pump capacity Operating range			Pump head		Shaft power P2			Frequency	Hz	50
		Min. m³/h	Max. m³/h	Max. m³/h	H(Q=0) m	η Max. m	P2(Q=0) kW	Max. kW	η Max. kW	Operating speed	rpm	2900
actual	165	23.9	114	73.4	35.7	31	11	9.18	Nominal flow	m³/h	0	
Min.	0	/	/	73.4	35.7	31	/	9.18	Nominal head	m	0	
Max.	220	/	/	117	68	58.6	/	25.6	Inlet pressure	kPa	0	
									Static head	m	0	

Power datas referred to:

hydr. Performance acceptance acc. To EN ISO 9906 Class Grade 3B

Water, pure [100%] ; 4°C; 1000kg/m³; 1.57mm²/s

MEI: N.A - according to Ecodesign Directive 2009/125/EC and Regulation (EU) No.547/2012



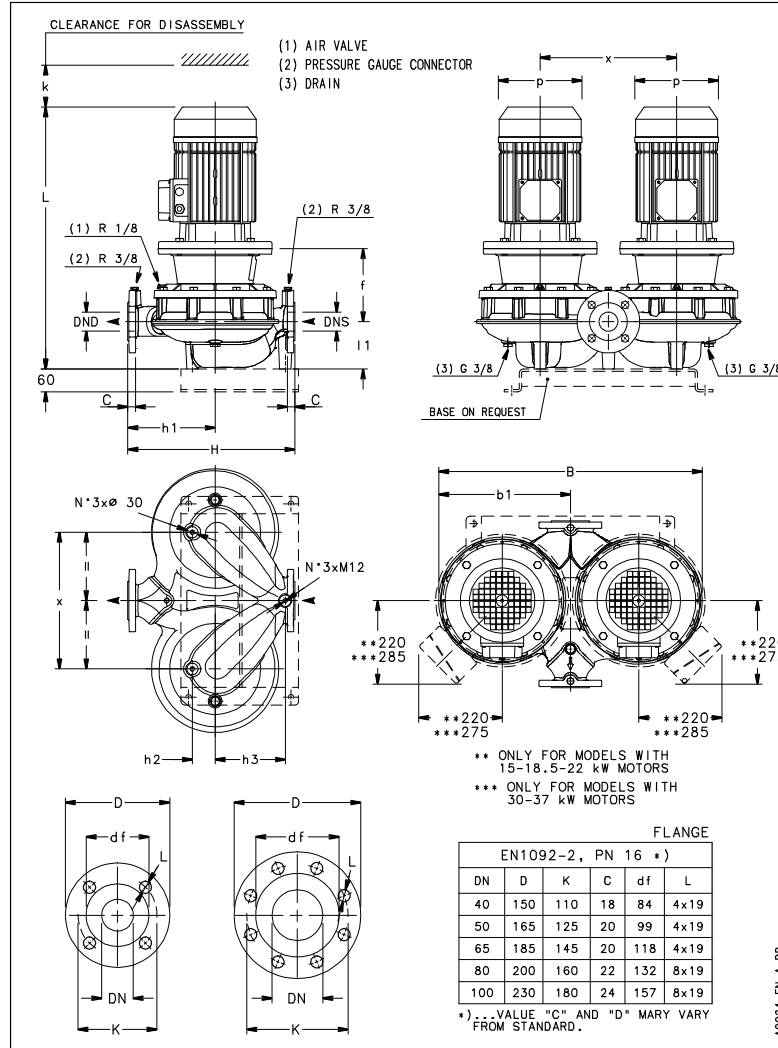
LNTS 80-200/110/P25VCC4

Dimensions

Company name
Contact
Phone number
e-mail address

Rigid coupling
2 poles motor
PLM 160 B5 11 kW

Electrical and dimensional data refer to IE3 motor



Dimensions [mm]

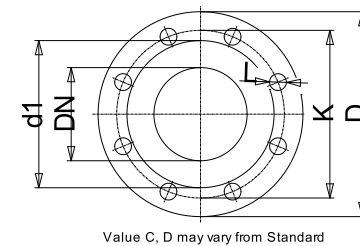
B	766
b1	377.5
DNd	80
DNs	80
f	240
H	500
h1	275
h2	85
h3	140
k	130
L	800
l1	132
p	256
x	420

Weight

Total weight	259 kg
---------------------	---------------

Connections

Suction nozzle		Discharge nozzle	
DN 80		DN 80	
PN 16		PN 16	
EN1092-2		EN1092-2	
C	22	C	22
D	200	D	200
df	132	df	132
DN	80	DN	80
K	160	K	160
L	8 x 19	L	8 x 19



Dimensions and weight without obligation

Project	Xylect-20969521
Block	LNTS 80-200/300/L25VCC4

Created by
Created on 8/8/2023

Last update 8/8/2023