

LNTE 32-160/30/P25RCS4

Performance curve

Company name
Contact
Phone number
e-mail address

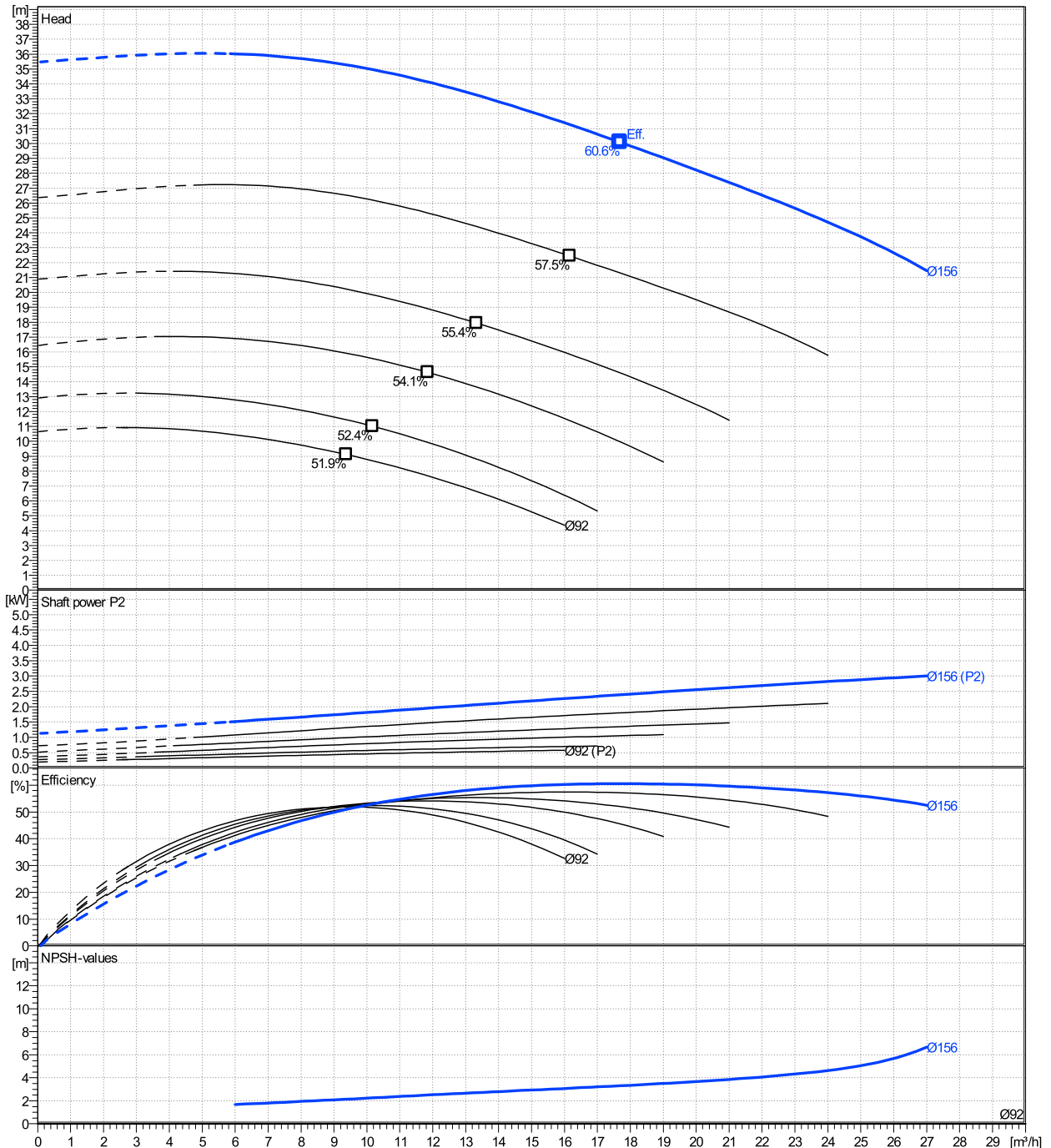
	Ø mm	Pump capacity			Pump head		Shaft power P2			Frequency	Hz	50
		Operating range Min. m³/h	Max. m³/h	η Max. m³/h	H(Q=0) m	η Max. m	P2(Q=0) kW	Max. kW	η Max. kW	Operating speed	rpm	2900
actual	156	6	27	17.7	35.5	30.1	3	2.39		Nominal flow	m³/h	0
Min.	0	/	/	9.38	10.6	9.11	/	0.447		Nominal head	m	0
Max.	156	/	/	17.7	35.5	30.1	/	2.39		Inlet pressure	kPa	0
										Static head	m	0

Power datas referred to:

hydr. Performance acceptance acc. To EN ISO 9906 Class Grade 3B

Water, pure [100%] ; 4°C; 1000kg/m³; 1.57mm²/s

MEI: N.A - according to Ecodesign Directive 2009/125/EC and Regulation (EU) No.547/2012



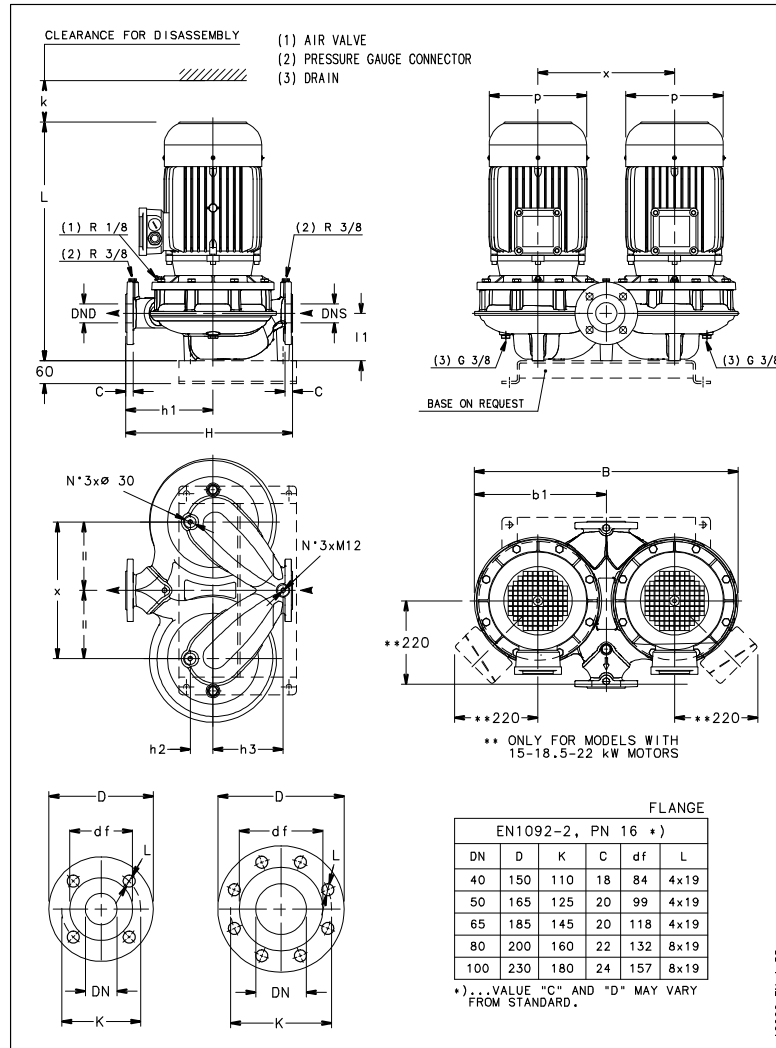
LNTE 32-160/30/P25RCS4

Dimensions

Company name
Contact
Phone number
e-mail address

Close coupled
2 poles motor
PLM 90 B14 3 kW

Electrical and dimensional data refer to IE3 motor



Dimensions [mm]	
B	514
b1	257
DND	32
DNS	32
H	320
h1	180
h2	40
h3	110
k	75
L	488
l1	90
p	174
x	275

Weight	
Total weight	79 kg

Connections	
Suction nozzle	Discharge nozzle
DN 32	DN 32
PN 16	PN 16
EN1092-2	EN1092-2

Dimensions and weight without obligation

Project	Xylect-20969076	Created by		Last update	8/8/2023
Block	LNTE 32-160/30/P25RCS4	Created on	8/8/2023		