

LNES 100-250/370/L25VCC4

Technical data

Company name
Contact
Phone number
e-mail address

Operating data					
1	Pumpe type	Single head pump		Fluid	Water, pure
2	No. of pumps	1		Operating temperature t A	°C 4
3	Nominal flow	m ³ /h	0	Max / Min Operating Temperature mech. Seal	°C 120 / -25
4	Nominal head	m	0	pH-value at t A	7
5	Static head	m	0	Density at t A	kg/m ³ 1000
6	Inlet pressure	kPa	0	Kin. viscosity at t A	mm ² /s 1.569
7	Environmental temperature	°C	20	Vapor pressure at t A	kPa 100
8	Available system NPSH	m	0	Altitude	0

Pump data						
9	Lubrication	Standard, Grease lubrication [Std]				
10	Execution					
11	Design	In-line		Impeller Ø	Max. mm 214	
12	Operating speed	2900 rpm	Stages 1		designed mm 214	
13	Suction nozzle	DN 100 /	PN 16 /		EN1092-2	Min. mm 214
14	Discharge nozzle	DN 100 /	PN 16 /	EN1092-2	Flow	
15	Max. casing pressure	kPa				Nominal m ³ /h
16	Max. working pressure	kPa	639.5		Max- m ³ /h 240	
17	Impeller type	Radial impeller		Head	Min- m ³ /h 50.3	
18	Head H(Q=0)	m	65		Nominal m	
19	Max. shaft power	kW	36.3		at Qmax m 42.2	
20	Pump weight	kg			at Qmin m 65.3	
21	Total weight	kg	267.0		Shaft power kW	
					Efficiency %	
					NPSH 3% m	

Materials					
22		Pump		Shaft Seal	
23	Volute Casing	Cast iron		Single mechanical seal, without shaft sleeve	
24	Casing Cover	Cast iron		eMG12 - Ø38mm	BQ7EGG-WA
25	Impeller	Cast iron / ASTM Class 30		Mechanical seal diameter	38 mm
26	Stub shaft	Stainless steel / AISI 431		1. Rotating ring	Carbon graphite resin impregnated
27	Wear ring	Stainless steel / AISI 304		2. Stationary ring	SiC, silicon carbide, sintered press. less
28	Impeller Nut	Stainless steel		3. Secondary seal	Ethylene propylene rubber (EPDM)
29	Impeller washer	Stainless steel		4. Springs	CrNiMo - Steel
30	Impeller key	Stainless steel / AISI 316Ti		5. Others	EPDM - WRAS
31	PLUG	Stainless steel / AISI 316Ti		Gaskets of the pump	Ethylene propylene rubber (EPDM)
32	GASKET	Asbestos-free synthetic fiber AFM34			
33					
34					
35					
36					
37					
38					
39					
40					
41					

Motor data					
Electrical and dimensional data refer to IE3 motor					
42	Manufacturer	Lowara			
43	Specific design	IE3 3ph Flange Motor - Premium Efficiency			
44	Type	3MAS 200 L B5 37 kW			
45	Rated power	37 kW	Rated current	64.5 A	
46	Nominal speed	2955 rpm	Rated voltage	400 V	
47	Frame size	200 L	Service factor	1	
48	Weight	kg 212.0	Degree of protection	IP55	

Remarks					
49					
50					
50					
52					

LNES 100-250/370/L25VCC4

Performance curve

Company name
Contact
Phone number
e-mail address

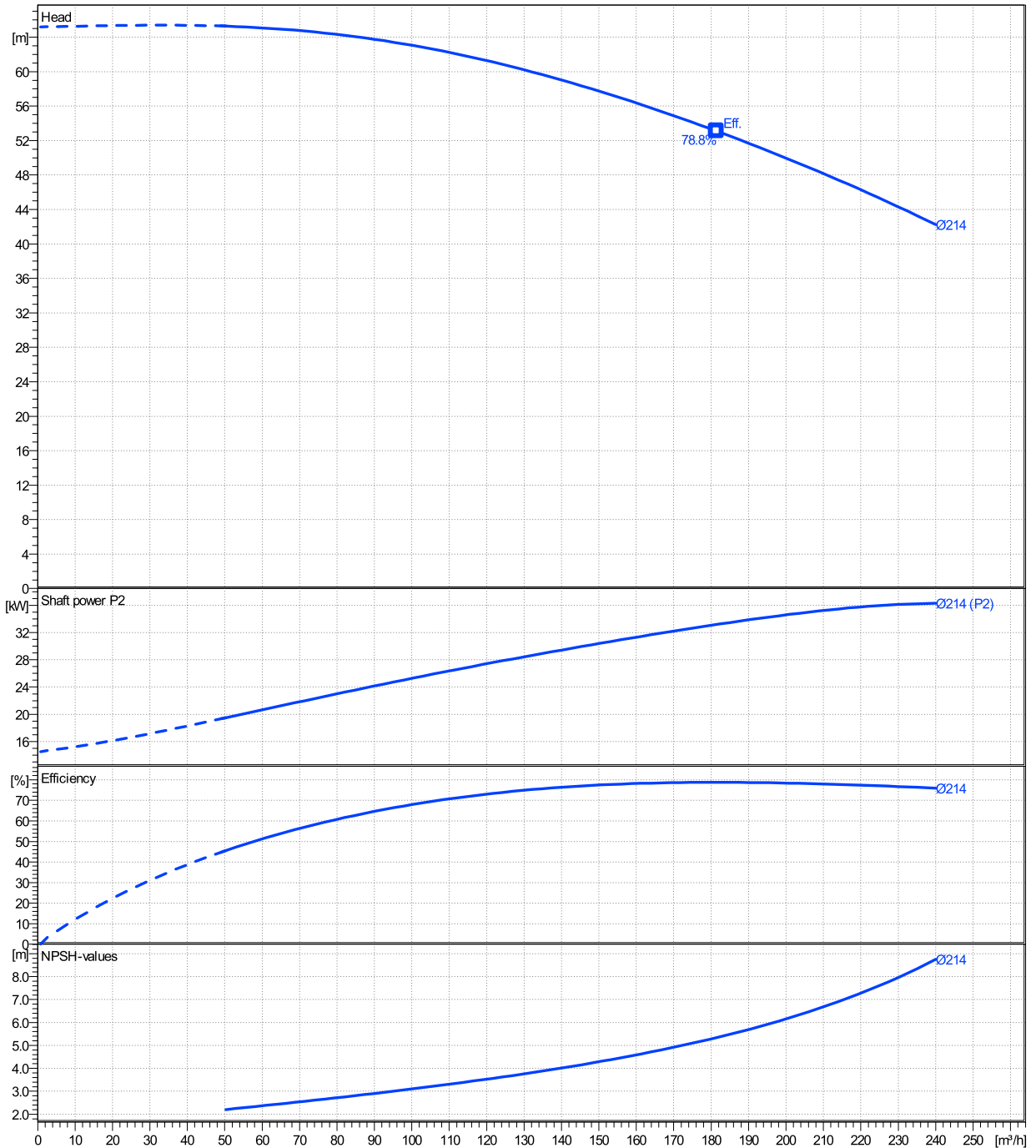
	Ø mm	Pump capacity			Pump head		Shaft power P2			Frequency		Hz	50
		Operating range Min. m³/h	Max. m³/h	η Max. m³/h	H(Q=0) m	η Max. m	P2(Q=0) kW	Max. kW	η Max. kW	Operating speed rpm	2900		
actual	214	50.3	240	181	65.2	53.1		36.3	33.2	Nominal flow	m³/h	0	
Min.	0	/	/	181	65.2	53.1		/	33.2	Nominal head	m	0	
Max.	214	/	/	181	65.2	53.1		/	33.2	Inlet pressure	kPa	0	
										Static head	m	0	

Power datas referred to:

hydr. Performance acceptance acc. To EN ISO 9906 Class Grade 3B

Water, pure [100%] ; 4°C; 1000kg/m³; 1.57mm²/s

MEI: N.A - according to Ecodesign Directive 2009/125/EC and Regulation (EU) No.547/2012



LNES 100-250/370/L25VCC4

Dimensions

Company name
Contact
Phone number
e-mail address

Rigid coupling

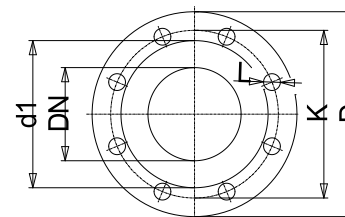
3MAS 200 L B5 37 kW

Electrical and dimensional data refer to IE3 motor

Dimensions		[mm]	
AD	300		
b1	201		
Bmax	371		
DNd	100		
DNs	100		
e	175		
f	246		
H	550		
h1	300		
h2	250		
L	1092		
p	408		
x	152		

Weight	
Total weight	267 kg

Connections			
Suction nozzle		Discharge nozzle	
DN 100		DN 100	
PN 16		PN 16	
EN1092-2		EN1092-2	
C	24	C	24
D	230	D	230
df	157	df	157
DN	100	DN	100
K	180	K	180
L	8 x 19	L	8 x 19



Value C, D may vary from Standard

Dimensions and weight without obligation

Project	Xylect-20945682	Created by		Last update	8/2/2023
Block	LNES 100-250/110/P45VCC4	Created on	8/2/2023		