

# LNES 100-200/370/L25VCC4

## Technical data

Company name  
Contact  
Phone number  
e-mail address

Operating data				
1	Pumpe type	Single head pump	Fluid	Water, pure
2	No. of pumps	1	Operating temperature t A	°C 4
3	Nominal flow	m <sup>3</sup> /h 0	Max / Min Operating Temperature mech. Seal	°C 120 / -25
4	Nominal head	m 0	pH-value at t A	7
5	Static head	m 0	Density at t A	kg/m <sup>3</sup> 1000
6	Inlet pressure	kPa 0	Kin. viscosity at t A	mm <sup>2</sup> /s 1.569
7	Environmental temperature	°C 20	Vapor pressure at t A	kPa 100
8	Available system NPSH	m 0	Altitude	0

Pump data				
9	Lubrication	Standard, Grease lubrication [Std]		
10	Execution			
11	Design	In-line	Impeller Ø	Max. mm 208
12	Operating speed	2900 rpm	designed	mm 208
		Stages 1	Min.	mm 181
13	Suction nozzle	DN 100 / PN 16 / EN1092-2	Flow	Nominal m <sup>3</sup> /h
14	Discharge nozzle	DN 100 / PN 16 / EN1092-2	Max-	m <sup>3</sup> /h 305.5
15	Max. casing pressure	kPa	Min-	m <sup>3</sup> /h 60.2
16	Max. working pressure	kPa 600.1	Head	Nominal m
17	Impeller type	Radial impeller	at Qmax	m 22
18	Head H(Q=0)	m 61	at Qmin	m 61.7
19	Max. shaft power	kW 35.5	Shaft power	kW
20	Pump weight	kg	Efficiency	%
21	Total weight	kg 267.0	NPSH 3%	m

Materials				
22		Pump	Shaft Seal	
23	Volute Casing	Cast iron	Single mechanical seal, without shaft sleeve	
24	Casing Cover	Cast iron	eMG12 - Ø38mm	BQ7EGG-WA
25	Impeller	Cast iron / ASTM Class 30	Mechanical seal diameter	38 mm
26	Stub shaft	Stainless steel / AISI 431	1. Rotating ring	Carbon graphite resin impregnated
27	Wear ring	Stainless steel / AISI 304	2. Stationary ring	SiC, silicon carbide, sintered press. less
28	Impeller Nut	Stainless steel	3. Secondary seal	Ethylene propylene rubber (EPDM)
29	Impeller washer	Stainless steel	4. Springs	CrNiMo - Steel
30	Impeller key	Stainless steel / AISI 316Ti	5. Others	EPDM - WRAS
31	PLUG	Stainless steel / AISI 316Ti	Gaskets of the pump	Ethylene propylene rubber (EPDM)
32	GASKET	Asbestos-free synthetic fiber AFM34		
33				
34				
35				
36				
37				
38				
39				
40				
41				

Motor data				
Electrical and dimensional data refer to IE3 motor				
42	Manufacturer	Lowara		
43	Specific design	IE3 3ph Flange Motor - Premium Efficiency		
44	Type	3MAS 200 L B5 37 kW		
45	Rated power	37 kW	Rated current	64.5 A
46	Nominal speed	2955 rpm	Rated voltage	400 V
47	Frame size	200 L	Service factor	1
48	Weight	kg 212.0	Degree of protection	IP55

Remarks				
49				
50				
50				
52				

# LNES 100-200/370/L25VCC4

## Performance curve

Company name  
Contact  
Phone number  
e-mail address

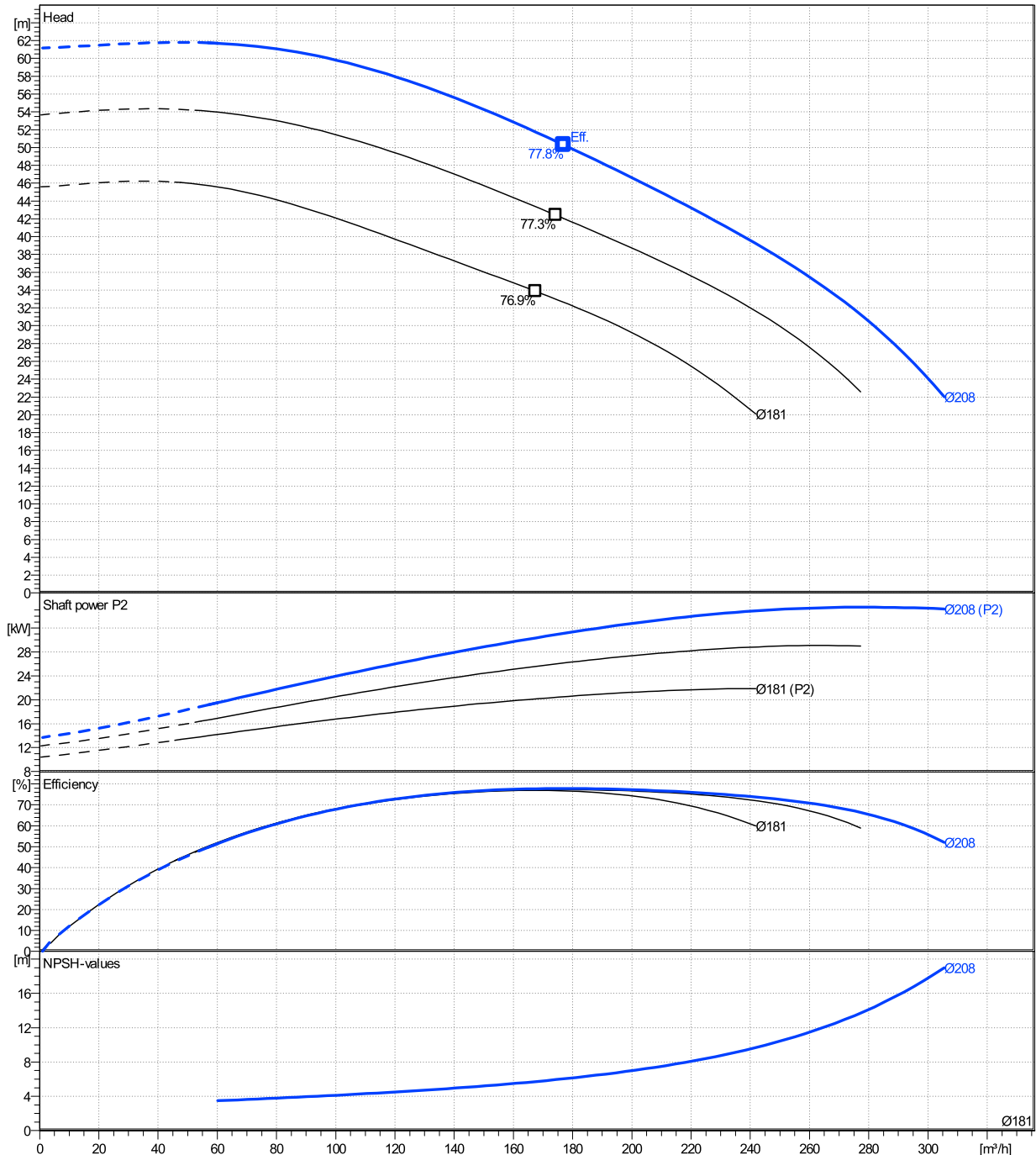
	Ø mm	Pump capacity			Pump head		Shaft power P2			Frequency	Hz	50
		Operating range Min. m³/h	Max. m³/h	η Max. m³/h	H(Q=0) m	η Max. m	P2(Q=0) kW	Max. kW	η Max. kW	Operating speed	rpm	2900
actual	208	60.2	305	177	61.2	50.3		35.5	31.1	Nominal flow	m³/h	0
Min.	0	/	/	167	45.6	33.9		/	20.1	Nominal head	m	0
Max.	208	/	/	177	61.2	50.3		/	31.1	Inlet pressure	kPa	0
										Static head	m	0

**Power datas referred to:**

hydr. Performance acceptance acc. To EN ISO 9906 Class Grade 3B

Water, pure [100%] ; 4°C; 1000kg/m³; 1.57mm²/s

MEI: N.A - according to Ecodesign Directive 2009/125/EC and Regulation (EU) No.547/2012



# LNES 100-200/370/L25VCC4

## Dimensions

Company name  
Contact  
Phone number  
e-mail address

Rigid coupling

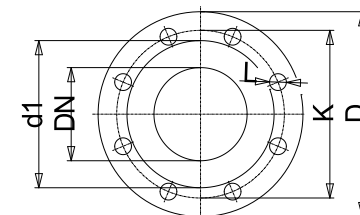
3MAS 200 L B5 37 kW

Electrical and dimensional data refer to IE3 motor

Dimensions		[ mm ]	
AD	300		
b1	201		
Bmax	371		
DNd	100		
DNs	100		
e	175		
f	246		
H	550		
h1	300		
h2	250		
L	1092		
p	408		
x	152		

Weight	
Total weight	267 kg

Connections			
<b>Suction nozzle</b>		<b>Discharge nozzle</b>	
DN 100		DN 100	
PN 16		PN 16	
EN1092-2		EN1092-2	
C	24	C	24
D	230	D	230
df	157	df	157
DN	100	DN	100
K	180	K	180
L	8 x 19	L	8 x 19



Value C, D may vary from Standard

### Dimensions and weight without obligation

Project	Xylect-20945664	Created by		Last update	8/2/2023
Block	LNES 100-200/55X/P45VCC4	Created on	8/2/2023		