

LNES 80-250/370/L25VCC4

Technical data

Company name
Contact
Phone number
e-mail address

Operating data			
1	Pumpe type	Single head pump	Fluid Water, pure
2	No. of pumps	1	Operating temperature t A °C 4
3	Nominal flow	m ³ /h 0	Max / Min Operating Temperature mech. Seal °C 120 / -25
4	Nominal head	m 0	pH-value at t A 7
5	Static head	m 0	Density at t A kg/m ³ 1000
6	Inlet pressure	kPa 0	Kin. viscosity at t A mm ² /s 1.569
7	Environmental temperature	°C 20	Vapor pressure at t A kPa 100
8	Available system NPSH	m 0	Altitude 0

Pump data			
9	Lubrication	Standard, Grease lubrication [Std]	
10	Execution		
11	Design	In-line	Impeller Ø
12	Operating speed	2900 rpm	Max. mm 229
		Stages 1	designed mm 229
13	Suction nozzle	DN 80 / PN 16 / EN1092-2	Min. mm 195
14	Discharge nozzle	DN 80 / PN 16 / EN1092-2	Flow Nominal m ³ /h
15	Max. casing pressure	kPa	Max- m ³ /h 193
16	Max. working pressure	kPa 718.6	Min- m ³ /h 34.3
17	Impeller type	Radial impeller	Head Nominal m
18	Head H(Q=0)	m 73	at Qmax m 45.4
19	Max. shaft power	kW 35.3	at Qmin m 76
20	Pump weight	kg	Shaft power kW
21	Total weight	kg 251.0	Efficiency %
			NPSH 3% m

Materials			
22		Pump	Shaft Seal
23	Volute Casing	Cast iron	Single mechanical seal, without shaft sleeve
24	Casing Cover	Cast iron	eMG12 - Ø38mm BQ7EGG-WA
25	Impeller	Cast iron / ASTM Class 30	Mechanical seal diameter 38 mm
26	Stub shaft	Stainless steel / AISI 431	1. Rotating ring Carbon graphite resin impregnated
27	Wear ring	Stainless steel / AISI 304	2. Stationary ring SiC, silicon carbide, sintered press.less
28	Impeller Nut	Stainless steel	3. Secondary seal Ethylene propylene rubber (EPDM)
29	Impeller washer	Stainless steel	4. Springs CrNiMo - Steel
30	Impeller key	Stainless steel / AISI 316Ti	5. Others EPDM - WRAS
31	PLUG	Stainless steel / AISI 316Ti	Gaskets of the pump Ethylene propylene rubber (EPDM)
32	GASKET	Asbestos-free synthetic fiber AFM34	
33			
34			
35			
36			
37			
38			
39			
40			
41			

Motor data			
Electrical and dimensional data refer to IE3 motor			
42	Manufacturer	Lowara	
43	Specific design	IE3 3ph Flange Motor - Premium Efficiency	
44	Type	3MAS 200 L B5 37 kW	
45	Rated power	37 kW	Rated current 64.5 A
46	Nominal speed	2955 rpm	Rated voltage 400 V
47	Frame size	200 L	Service factor 1
48	Weight	kg 212.0	Degree of protection IP55

Remarks			
49			
50			
50			
52			

LNES 80-250/370/L25VCC4

Performance curve

Company name
Contact
Phone number
e-mail address

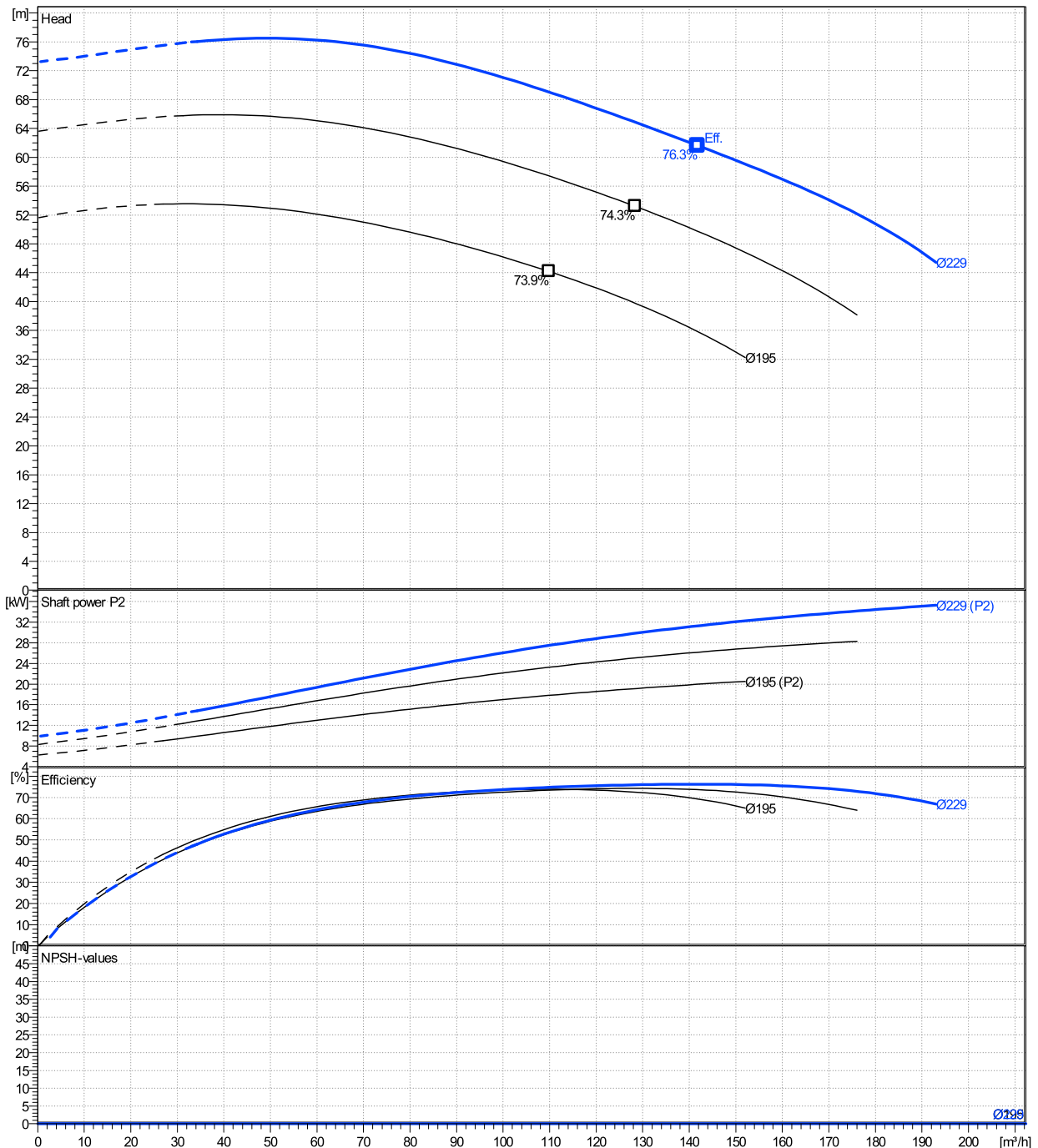
	Ø mm	Pump capacity			Pump head		Shaft power P2			Frequency		Hz	50
		Operating range Min. m³/h	Max. m³/h	η Max. m³/h	H(Q=0) m	η Max. m	P2(Q=0) kW	Max. kW	η Max. kW	Operating speed rpm	2900		
actual	229	34.3	193	142	73.3	61.6		35.3	31.3	Nominal flow	m³/h	0	
Min.	0	/	/	110	51.6	44.2		/	17.8	Nominal head	m	0	
Max.	229	/	/	142	73.3	61.6		/	31.3	Inlet pressure	kPa	0	
										Static head	m	0	

Power datas referred to:

hydr. Performance acceptance acc. To EN ISO 9906 Class Grade 3B

Water, pure [100%] ; 4°C; 1000kg/m³; 1.57mm²/s

MEI: N.A - according to Ecodesign Directive 2009/125/EC and Regulation (EU) No.547/2012



LNES 80-250/370/L25VCC4

Dimensions

Company name
Contact
Phone number
e-mail address

Rigid coupling

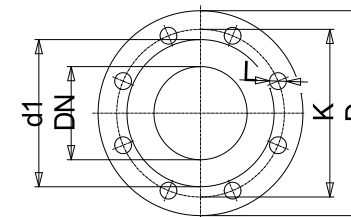
3MAS 200 L B5 37 kW

Electrical and dimensional data refer to IE3 motor

Dimensions		[mm]	
AD	300		
b1	185		
Bmax	353		
DNd	80		
DNs	80		
e	132		
f	246		
H	500		
h1	265		
h2	235		
L	1049		
p	408		
x	130		

Weight	
Total weight	251 kg

Connections			
Suction nozzle		Discharge nozzle	
DN 80		DN 80	
PN 16		PN 16	
EN1092-2		EN1092-2	
C	22	C	22
D	200	D	200
df	132	df	132
DN	80	DN	80
K	160	K	160
L	8 x 19	L	8 x 19



Value C, D may vary from Standard

Dimensions and weight without obligation

Project	Xylect-20945534	Created by		Last update	8/2/2023
Block	LNES 80-250/75/P45VCC4	Created on	8/2/2023		