

LNES 80-200/185/P25VCC4

Technical data

Company name
Contact
Phone number
e-mail address

| Operating data | | | |
|----------------|---------------------------|------------------|---|
| 1 | Pumpe type | Single head pump | Fluid Water, pure |
| 2 | No. of pumps | 1 | Operating temperature t A °C 4 |
| 3 | Nominal flow | m³/h 0 | Max / Min Operating Temperature mech. Seal °C 120 / -25 |
| 4 | Nominal head | m 0 | pH-value at t A 7 |
| 5 | Static head | m 0 | Density at t A kg/m³ 1000 |
| 6 | Inlet pressure | kPa 0 | Kin. viscosity at t A mm²/s 1.569 |
| 7 | Environmental temperature | °C 20 | Vapor pressure at t A kPa 100 |
| 8 | Available system NPSH | m 0 | Altitude 0 |

| Pump data | | | |
|-----------|-----------------------|------------------------------------|----------------|
| 9 | Lubrication | Standard, Grease lubrication [Std] | |
| 10 | Execution | | |
| 11 | Design | In-line | |
| 12 | Operating speed | 2900 rpm | Stages 1 |
| 13 | Suction nozzle | DN 80 / PN 16 / EN1092-2 | Impeller Ø |
| 14 | Discharge nozzle | DN 80 / PN 16 / EN1092-2 | |
| 15 | Max. casing pressure | kPa | Flow |
| 16 | Max. working pressure | kPa 486.5 | |
| 17 | Impeller type | Radial impeller | |
| 18 | Head H(Q=0) | m 50 | Head |
| 19 | Max. shaft power | kW 17 | |
| 20 | Pump weight | kg | Shaft power kW |
| 21 | Total weight | kg 169.0 | |
| | | | Efficiency % |
| | | | |
| | | | NPSH 3% m |
| | | | |

| Materials | | | |
|-----------|-----------------|-------------------------------------|--|
| 22 | | | |
| | | | |
| 23 | Volute Casing | Cast iron | Shaft Seal |
| 24 | Casing Cover | Cast iron | Single mechanical seal, without shaft sleeve |
| 25 | Impeller | Cast iron / ASTM Class 30 | eMG12 - Ø28mm BQ7EGG-WA |
| 26 | Stub shaft | Stainless steel / AISI 431 | Mechanical seal diameter 28 mm |
| 27 | Wear ring | Stainless steel / AISI 304 | 1. Rotating ring Carbon graphite resin impregnated |
| 28 | Impeller Nut | Stainless steel | 2. Stationary ring SiC, silicon carbide, sintered press.less |
| 29 | Impeller washer | Stainless steel | 3. Secondary seal Ethylene propylene rubber (EPDM) |
| 30 | Impeller key | Stainless steel / AISI 316Ti | 4. Springs CrNiMo - Steel |
| 31 | PLUG | Stainless steel / AISI 316Ti | 5. Others EPDM - WRAS |
| 32 | GASKET | Asbestos-free synthetic fiber AFM34 | Gaskets of the pump Ethylene propylene rubber (EPDM) |
| 33 | | | |
| 34 | | | |
| 35 | | | |
| 36 | | | |
| 37 | | | |
| 38 | | | |
| 39 | | | |
| 40 | | | |
| 41 | | | |

| Motor data | | | |
|--|-----------------|---|---------------------------|
| Electrical and dimensional data refer to IE3 motor | | | |
| 42 | Manufacturer | Lowara | |
| 43 | Specific design | IE3 3ph Flange Motor - Premium Efficiency | |
| 44 | Type | PLM 160 B5 18,5 kW | |
| 45 | Rated power | 18.5 kW | Rated current 32.7 A |
| 46 | Nominal speed | 2940 rpm | Rated voltage 400 V |
| 47 | Frame size | 160 | Service factor 1 |
| 48 | Weight | kg 110.8 | Degree of protection IP55 |

| Remarks | | | |
|---------|--|--|--|
| 49 | | | |
| 50 | | | |
| 50 | | | |
| 52 | | | |

LNES 80-200/185/P25VCC4

Performance curve

Company name
Contact
Phone number
e-mail address

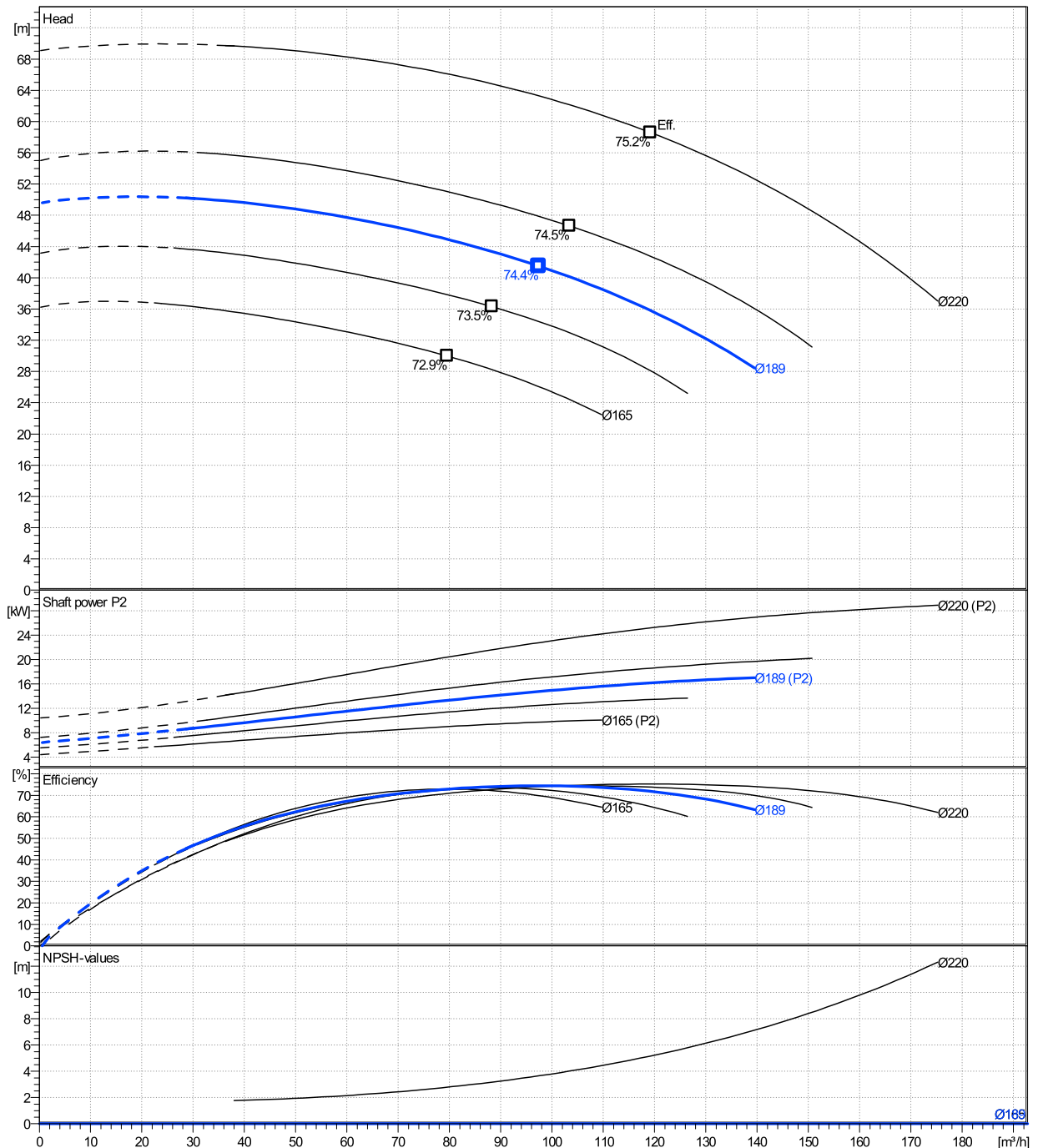
| | Ø mm | Pump capacity | | | Pump head | | Shaft power P2 | | | Frequency | Hz | 50 |
|--------|---------|------------------------------|-----------|----------------|-------------|-------------|----------------|---------|----------------|-----------------|-----|------|
| | | Operating range Min. m³/h | Max. m³/h | η Max. m³/h | H(Q=0) m | η Max. m | P2(Q=0) kW | Max. kW | η Max. kW | Operating speed | rpm | 2900 |
| actual | 189 | 30.3 | 140 | 97.4 | 49.6 | 41.5 | 17 | 14.8 | Nominal flow | m³/h | 0 | |
| Min. | 0 | / | / | 79.5 | 36.2 | 30 | / | 9.01 | Nominal head | m | 0 | |
| Max. | 220 | / | / | 119 | 69.1 | 58.6 | / | 25.2 | Inlet pressure | kPa | 0 | |
| | | | | | | | | | Static head | m | 0 | |

Power datas referred to:

hydr. Performance acceptance acc. To EN ISO 9906 Class Grade 3B

Water, pure [100%] ; 4°C; 1000kg/m³; 1.57mm²/s

MEI: N.A - according to Ecodesign Directive 2009/125/EC and Regulation (EU) No.547/2012



LNES 80-200/185/P25VCC4

Dimensions

Company name
Contact
Phone number
e-mail address

Rigid coupling

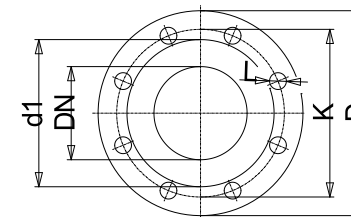
PLM 160 B5 18,5 kW

Electrical and dimensional data refer to IE3 motor

| Dimensions | | [mm] | |
|------------|-----|--------|--|
| AD | 240 | | |
| b1 | 185 | | |
| Bmax | 353 | | |
| DNd | 80 | | |
| DNs | 80 | | |
| e | 132 | | |
| f | 240 | | |
| H | 500 | | |
| h1 | 265 | | |
| h2 | 235 | | |
| L | 866 | | |
| p | 313 | | |
| x | 130 | | |

| Weight | |
|--------------|--------|
| Total weight | 169 kg |

| Connections | | | |
|-----------------------|--------|-------------------------|--------|
| Suction nozzle | | Discharge nozzle | |
| DN 80 | | DN 80 | |
| PN 16 | | PN 16 | |
| EN1092-2 | | EN1092-2 | |
| C | 22 | C | 22 |
| D | 200 | D | 200 |
| df | 132 | df | 132 |
| DN | 80 | DN | 80 |
| K | 160 | K | 160 |
| L | 8 x 19 | L | 8 x 19 |



Value C, D may vary from Standard

Dimensions and weight without obligation

| | | | | | |
|---------|-------------------------|------------|----------|-------------|----------|
| Project | Xylect-20945534 | Created by | | Last update | 8/2/2023 |
| Block | LNES 80-200/300/L25VCC4 | Created on | 8/2/2023 | | |