

LNEE 100-160/150/P25VCC4

Technical data

Company name
Contact
Phone number
e-mail address

Operating data				
1	Pumpe type	Single head pump	Fluid	Water, pure
2	No. of pumps	1	Operating temperature t A	°C 4
3	Nominal flow	m³/h 0	Max / Min Operating Temperature mech. Seal	°C 120 / -25
4	Nominal head	m 0	pH-value at t A	7
5	Static head	m 0	Density at t A	kg/m³ 1000
6	Inlet pressure	kPa 0	Kin. viscosity at t A	mm²/s 1.569
7	Environmental temperature	°C 20	Vapor pressure at t A	kPa 100
8	Available system NPSH	m 0	Altitude	0

Pump data				
9	Lubrication	Standard, Grease lubrication [Std]		
10	Execution			
11	Design	In-Line single head		
12	Operating speed	2900 rpm	Stages	1
13	Suction nozzle	DN 100 /	PN 16 /	EN1092-2
14	Discharge nozzle	DN 100 /	PN 16 /	EN1092-2
15	Max. casing pressure	kPa		
16	Max. working pressure	kPa	311.5	
17	Impeller type	Radial impeller		
18	Head H(Q=0)	m	32	
19	Max. shaft power	kW	14.5	
20	Pump weight	kg		
21	Total weight	kg	162.0	

Materials				
22		Pump	Shaft Seal	
23	Volute Casing	Cast iron	Single mechanical seal, without shaft sleeve	
24	Casing Cover	Cast iron	eMG12 - Ø28mm	BQ7EGG-WA
25	Impeller	Cast iron / ASTM Class 30	Mechanical seal diameter	28 mm
26	Stub shaft	Stainless steel / AISI 316L	1. Rotating ring	Carbon graphite resin impregnated
27	Wear ring	Stainless steel / AISI 304	2. Stationary ring	SiC, silicon carbide, sintered press.less
28	Impeller lock nut and washer	Stainless steel / AISI 304	3. Secondary seal	Ethylene propylene rubber (EPDM)
29	Impeller key	Stainless steel / AISI 316L	4. Springs	CrNiMo - Steel
30	Fill and drain plugs	Nickel-plated brass	5. Others	EPDM - WRAS
31			Gaskets of the pump	Ethylene propylene rubber (EPDM)
32				
33				
34				
35				
36				
37				
38				
39				
40				
41				

Motor data				
Electrical and dimensional data refer to IE3 motor				
42	Manufacturer	Lowara		
43	Specific design	IE3 3ph Flange Motor		
44	Type	PLM 160 B14 15 kW		
45	Rated power	15 kW	Rated current	26.6 A
46	Nominal speed	2940 rpm	Rated voltage	400 V
47	Frame size	160	Service factor	1
48	Weight	kg 110.8	Degree of protection	IP55

Remarks				
49				
50				
50				
52				

LNEE 100-160/150/P25VCC4

Performance curve

Company name
Contact
Phone number
e-mail address

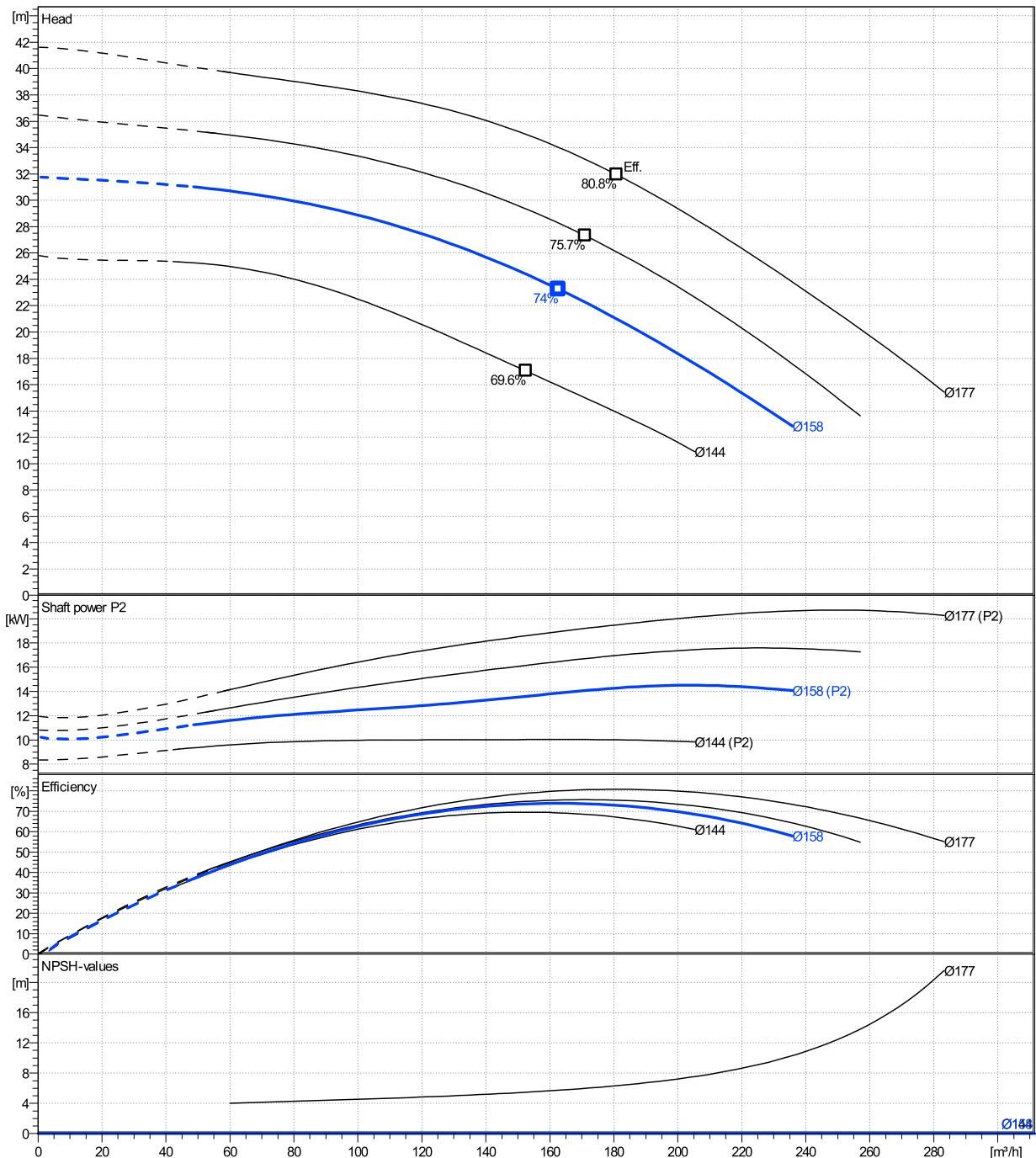
	Ø mm	Pump capacity			Pump head		Shaft power P2			Frequency	Hz	50
		Operating range Min. m³/h	Max. m³/h	η Max. m³/h	H(Q=0) m	η Max. m	P2(Q=0) kW	Max. kW	η Max. kW	Operating speed	rpm	2900
actual	158	50.6	236	163	31.8	23.2		14.5	13.9	Nominal flow	m³/h	0
Min.	0	/	/	153	25.8	17		/	10	Nominal head	m	0
Max.	177	/	/	181	41.6	31.9		/	19.5	Inlet pressure	kPa	0
										Static head	m	0

Power datas referred to:

hydr. Performance acceptance acc. To EN ISO 9906 Class Grade 3B

Water, pure [100%] ; 4°C; 1000kg/m³; 1.57mm²/s

MEI: N.A - according to Ecodesign Directive 2009/125/EC and Regulation (EU) No.547/2012



LNEE 100-160/150/P25VCC4

Dimensions

Company name
Contact
Phone number
e-mail address

Close coupled

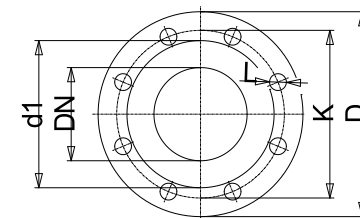
PLM 160 B14 15 kW

Electrical and dimensional data refer to IE3 motor

Dimensions		[mm]	
AD	240		
b1	179		
Bmax	408		
DND	100		
DNS	100		
e	140		
H	500		
h1	260		
h2	240		
L	754		
p	313		
x	123		

Weight	
Total weight	162 kg

Connections			
Suction nozzle		Discharge nozzle	
DN 100		DN 100	
PN 16		PN 16	
EN1092-2		EN1092-2	
C	24	C	24
D	230	D	230
df	157	df	157
DN	100	DN	100
K	180	K	180
L	8 x 19	L	8 x 19



Value C, D may vary from Standard

Dimensions and weight without obligation

Project	Xlect-20945534	Created by		Last update	8/2/2023
Block	LNEE 100-160/30/P45RCC4	Created on	8/2/2023		