

# LNEE 80-160/110X/P25VCC4

## Technical data

Company name  
Contact  
Phone number  
e-mail address

Operating data						
1	Pumpe type	Single head pump		Fluid	Water, pure	
2	No. of pumps	1		Operating temperature t A	°C	4
3	Nominal flow	m <sup>3</sup> /h	0	Max / Min Operating Temperature mech. Seal	°C	120 / -25
4	Nominal head	m	0	pH-value at t A		7
5	Static head	m	0	Density at t A	kg/m <sup>3</sup>	1000
6	Inlet pressure	kPa	0	Kin. viscosity at t A	mm <sup>2</sup> /s	1.569
7	Environmental temperature	°C	20	Vapor pressure at t A	kPa	100
8	Available system NPSH	m	0	Altitude		0

Pump data							
9	Lubrication	Standard, Grease lubrication [Std]					
10	Execution						
11	Design	In-Line single head			Impeller Ø	Max. mm	180
12	Operating speed	2900 rpm	Stages	1		designed mm	162
13	Suction nozzle	DN 80 /	PN 16 /	EN1092-2		Min. mm	130
14	Discharge nozzle	DN 80 /	PN 16 /	EN1092-2	Flow	Nominal m <sup>3</sup> /h	
15	Max. casing pressure	kPa				Max- m <sup>3</sup> /h	149
16	Max. working pressure	kPa	340.6		Min- m <sup>3</sup> /h	29.9	
17	Impeller type	Radial impeller			Head	Nominal m	
18	Head H(Q=0)	m	35			at Qmax m	14.3
19	Max. shaft power	kW	10.4		Shaft power kW		
20	Pump weight	kg			Efficiency %		
21	Total weight	kg	112.0		NPSH 3% m		

Materials						
22		Pump			Shaft Seal	
23	Volute Casing	Cast iron			Single mechanical seal, without shaft sleeve	
24	Casing Cover	Cast iron			eMG12 - Ø28mm	BQ7EGG-WA
25	Impeller	Cast iron / ASTM Class 30			Mechanical seal diameter	28 mm
26	Stub shaft	Stainless steel / AISI 316L			1. Rotating ring	Carbon graphite resin impregnated
27	Wear ring	Stainless steel / AISI 304			2. Stationary ring	SiC, silicon carbide, sintered press.less
28	Impeller lock nut and washer	Stainless steel / AISI 304			3. Secondary seal	Ethylene propylene rubber (EPDM)
29	Impeller key	Stainless steel / AISI 316L			4. Springs	CrNiMo - Steel
30	Fill and drain plugs	Nickel-plated brass			5. Others	EPDM - WRAS
31					Gaskets of the pump	Ethylene propylene rubber (EPDM)
32						
33						
34						
35						
36						
37						
38						
39						
40						
41						

Motor data					
Electrical and dimensional data refer to IE3 motor					
42	Manufacturer	Lowara			
43	Specific design	IE3 3ph Flange Motor - Premium Efficiency			
44	Type	PLM 160 B5 11 kW			
45	Rated power	11 kW	Rated current	20.2 A	
46	Nominal speed	2910 rpm	Rated voltage	400 V	
47	Frame size	160	Service factor	1	
48	Weight	kg 70.4	Degree of protection	IP55	

Remarks					
49					
50					
50					
52					

# LNEE 80-160/110X/P25VCC4

## Performance curve

Company name  
Contact  
Phone number  
e-mail address

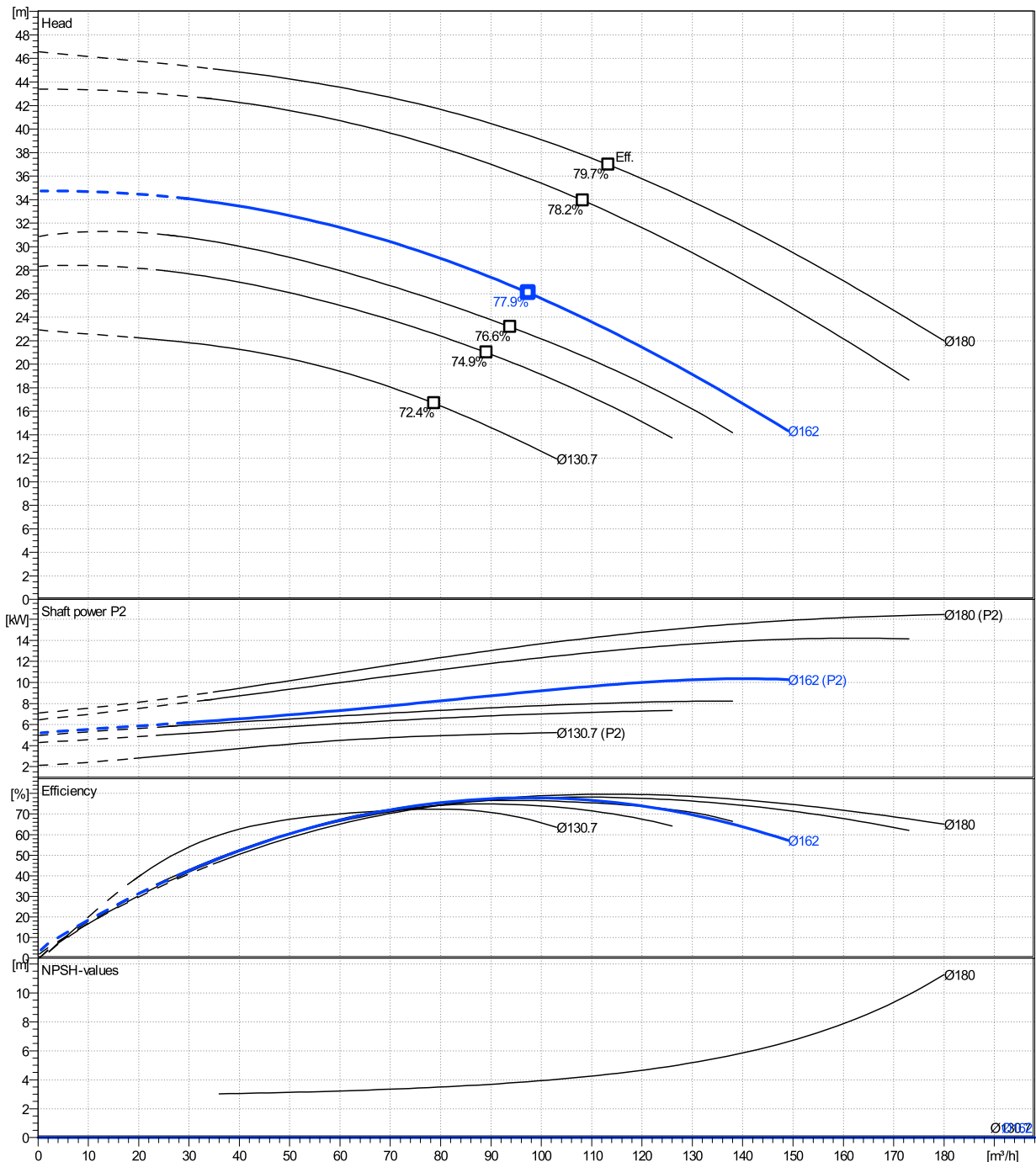
	Ø mm	Pump capacity			Pump head		Shaft power P2			Frequency	Hz	50
		Operating range Min. m <sup>3</sup> /h	Max. m <sup>3</sup> /h	η Max. m <sup>3</sup> /h	H(Q=0) m	η Max. m	P2(Q=0) kW	Max. kW	η Max. kW	Operating speed	rpm	2900
actual	162	29.9	149	97.4	34.7	26.1	10.4	9.08	Nominal flow	m <sup>3</sup> /h	0	
Min.	0	/	/	78.7	22.9	16.7	/	4.94	Nominal head	m	0	
Max.	180	/	/	113	46.6	36.9	/	14.4	Inlet pressure	kPa	0	
									Static head	m	0	

**Power datas referred to:**

hydr. Performance acceptance acc. To EN ISO 9906 Class Grade 3B

Water, pure [100%] ; 4°C; 1000kg/m<sup>3</sup>; 1.57mm<sup>2</sup>/s

MEI: N.A - according to Ecodesign Directive 2009/125/EC and Regulation (EU) No.547/2012



# LNEE 80-160/110X/P25VCC4

## Dimensions

Company name  
Contact  
Phone number  
e-mail address

Close coupled

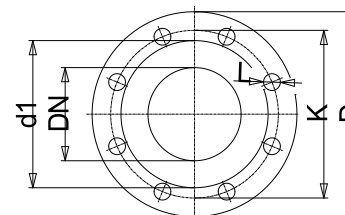
PLM 160 B5 11 kW

Electrical and dimensional data refer to IE3 motor

Dimensions		[ mm ]	
AD	191		
b1	168		
Bmax	359		
DND	80		
DNS	80		
e	114		
H	420		
h1	215		
h2	205		
L	634		
p	256		
x	111		

Weight	
Total weight	112 kg

Connections			
<b>Suction nozzle</b>		<b>Discharge nozzle</b>	
DN 80		DN 80	
PN 16		PN 16	
EN1092-2		EN1092-2	
C	22	C	22
D	200	D	200
df	132	df	132
DN	80	DN	80
K	160	K	160
L	8 x 19	L	8 x 19



Value C, D may vary from Standard

### Dimensions and weight without obligation

Project	Xylect-20945460	Created by		Last update	8/2/2023
Block	LNEE 80-160/22/P45RCC4	Created on	8/2/2023		