

LNEE 80-160/92/P25VCC4

Technical data

Company name
Contact
Phone number
e-mail address

Operating data			
1	Pumpe type	Single head pump	Fluid Water, pure
2	No. of pumps	1	Operating temperature t A °C 4
3	Nominal flow	m³/h 0	Max / Min Operating Temperature mech. Seal °C 120 / -25
4	Nominal head	m 0	pH-value at t A 7
5	Static head	m 0	Density at t A kg/m³ 1000
6	Inlet pressure	kPa 0	Kin. viscosity at t A mm²/s 1.569
7	Environmental temperature	°C 20	Vapor pressure at t A kPa 100
8	Available system NPSH	m 0	Altitude 0

Pump data			
9	Lubrication	Standard, Grease lubrication [Std]	
10	Execution		
11	Design	In-Line single head	
12	Operating speed	2900 rpm	Stages 1
13	Suction nozzle	DN 80 / PN 16 / EN1092-2	Impeller Ø
14	Discharge nozzle	DN 80 / PN 16 / EN1092-2	
15	Max. casing pressure	kPa	Flow
16	Max. working pressure	kPa 302.8	
17	Impeller type	Radial impeller	
18	Head H(Q=0)	m 31	Head
19	Max. shaft power	kW 8.2	
20	Pump weight	kg	Shaft power kW
21	Total weight	kg 109.0	
			Efficiency %
			NPSH 3% m

Materials			
22			
23	Volute Casing	Cast iron	Shaft Seal
24	Casing Cover	Cast iron	
25	Impeller	Cast iron / ASTM Class 30	Single mechanical seal, without shaft sleeve
26	Stub shaft	Stainless steel / AISI 316L	eMG12 - Ø28mm
27	Wear ring	Stainless steel / AISI 304	Mechanical seal diameter
28	Impeller lock nut and washer	Stainless steel / AISI 304	28 mm
29	Impeller key	Stainless steel / AISI 316L	1. Rotating ring
30	Fill and drain plugs	Nickel-plated brass	2. Stationary ring
31			3. Secondary seal
32			4. Springs
33			5. Others
34			Gaskets of the pump
35			Ethylene propylene rubber (EPDM)
36			
37			
38			
39			
40			
41			

Motor data			
42	Manufacturer	Lowara	
43	Specific design	IE3 3ph Flange Motor	
44	Type	PLM 132 B14 9,2 kW	
45	Rated power	9.2 kW	Rated current 17.4 A
46	Nominal speed	2920 rpm	Rated voltage 400 V
47	Frame size	132	Service factor 1
48	Weight	kg 70.4	Degree of protection IP55

Remarks			
49			
50			
50			
52			

LNEE 80-160/92/P25VCC4

Performance curve

Company name
Contact
Phone number
e-mail address

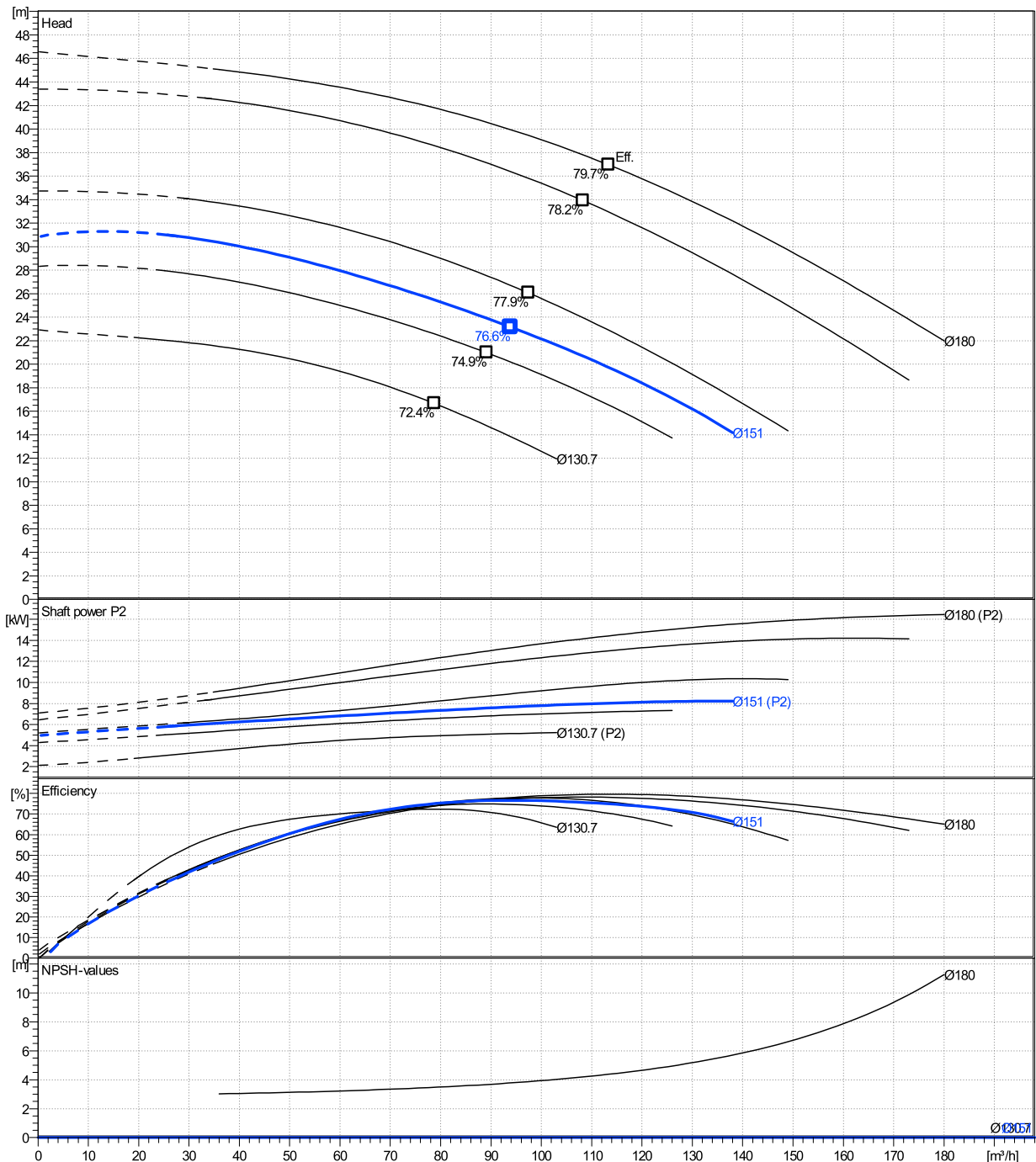
	Ø mm	Pump capacity			Pump head		Shaft power P2			Frequency	Hz	50
		Operating range Min. m³/h	Max. m³/h	η Max. m³/h	H(Q=0) m	η Max. m	P2(Q=0) kW	Max. kW	η Max. kW	Operating speed	rpm	2900
actual	151	27.7	138	93.9	30.9	23.2	8.24	7.67	Nominal flow	m³/h	0	
Min.	0	/	/	78.7	22.9	16.7	/	4.94	Nominal head	m	0	
Max.	180	/	/	113	46.6	36.9	/	14.4	Inlet pressure	kPa	0	
									Static head	m	0	

Power datas referred to:

hydr. Performance acceptance acc. To EN ISO 9906 Class Grade 3B

Water, pure [100%] ; 4°C; 1000kg/m³; 1.57mm²/s

MEI: N.A - according to Ecodesign Directive 2009/125/EC and Regulation (EU) No.547/2012



LNEE 80-160/92/P25VCC4

Dimensions

Company name
Contact
Phone number
e-mail address

Close coupled

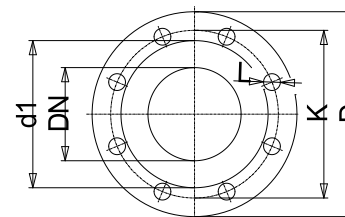
PLM 132 B14 9,2 kW

Electrical and dimensional data refer to IE3 motor

Dimensions		[mm]	
AD	191		
b1	168		
Bmax	359		
DND	80		
DNS	80		
e	114		
H	420		
h1	215		
h2	205		
L	634		
p	256		
x	111		

Weight	
Total weight	109 kg

Connections			
Suction nozzle		Discharge nozzle	
DN 80		DN 80	
PN 16		PN 16	
EN1092-2		EN1092-2	
C	22	C	22
D	200	D	200
df	132	df	132
DN	80	DN	80
K	160	K	160
L	8 x 19	L	8 x 19



Value C, D may vary from Standard

Dimensions and weight without obligation

Project	Xylect-20945460	Created by		Last update	8/2/2023
Block	LNEE 80-160/22/P45RCC4	Created on	8/2/2023		