

LNEE 65-250/150/P25VCS4

Technical data

Company name
Contact
Phone number
e-mail address

Operating data						
1	Pumpe type	Single head pump		Fluid	Water, pure	
2	No. of pumps	1		Operating temperature t A	°C	4
3	Nominal flow	m ³ /h	0	Max / Min Operating Temperature mech. Seal	°C	120 / -25
4	Nominal head	m	0	pH-value at t A		7
5	Static head	m	0	Density at t A	kg/m ³	1000
6	Inlet pressure	kPa	0	Kin. viscosity at t A	mm ² /s	1.569
7	Environmental temperature	°C	20	Vapor pressure at t A	kPa	100
8	Available system NPSH	m	0	Altitude		0

Pump data										
9	Lubrication	Standard, Grease lubrication [Std]								
10	Execution									
11	Design	In-Line single head		Impeller Ø	Max.	mm	232			
12	Operating speed	2900 rpm	Stages		1	designed	mm	208		
13	Suction nozzle	DN 65	/	PN 16	/	EN1092-2	Min.	mm	208	
14	Discharge nozzle	DN 65	/	PN 16	/	EN1092-2	Flow	Nominal	m ³ /h	
15	Max. casing pressure	kPa			Max-	m ³ /h		80.3		
16	Max. working pressure	kPa	578.3		Min-	m ³ /h	23.3			
17	Impeller type	Radial impeller		Head	Nominal	m				
18	Head H(Q=0)	m	59		at Qmax	m	45.7			
19	Max. shaft power	kW	14.3		at Qmin	m	59.5			
20	Pump weight	kg			Shaft power	kW				
21	Total weight	kg	148.0		Efficiency	%				
					NPSH 3%	m				

Materials					
22		Pump		Shaft Seal	
23	Volute Casing	Cast iron		Single mechanical seal, without shaft sleeve	
24	Casing Cover	Cast iron		eMG12 - Ø28mm	BQ7EGG-WA
25	Impeller	Stainless steel / AISI 304		Mechanical seal diameter	28 mm
26	Stub shaft	Stainless steel / AISI 316L		1. Rotating ring	Carbon graphite resin impregnated
27	Wear ring	Stainless steel / AISI 304		2. Stationary ring	SiC, silicon carbide, sintered press.less
28	Impeller lock nut and washer	Stainless steel / AISI 304		3. Secondary seal	Ethylene propylene rubber (EPDM)
29	Impeller key	Stainless steel / AISI 316L		4. Springs	CrNiMo - Steel
30	Fill and drain plugs	Nickel-plated brass		5. Others	EPDM - WRAS
31				Gaskets of the pump	Ethylene propylene rubber (EPDM)
32					
33					
34					
35					
36					
37					
38					
39					
40					
41					

Motor data					
Electrical and dimensional data refer to IE3 motor					
42	Manufacturer	Lowara			
43	Specific design	IE3 3ph Flange Motor			
44	Type	PLM 160 B14 15 kW			
45	Rated power	15 kW	Rated current	26.6 A	
46	Nominal speed	2940 rpm	Rated voltage	400 V	
47	Frame size	160	Service factor	1	
48	Weight	kg	110.8	Degree of protection	IP55

Remarks					
49					
50					
50					
52					

LNEE 65-250/150/P25VCS4

Performance curve

Company name
Contact
Phone number
e-mail address

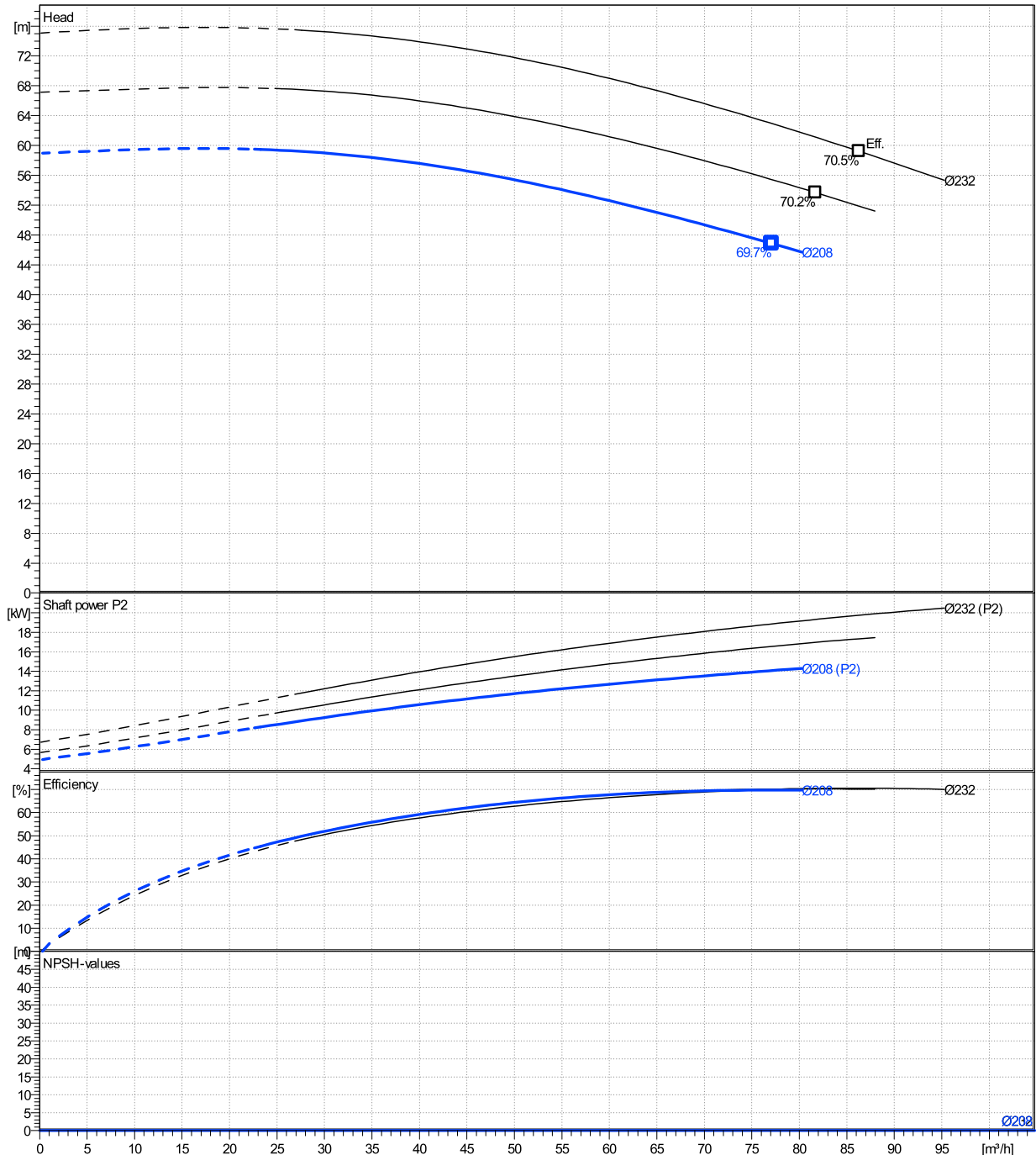
	Ø mm	Pump capacity			Pump head		Shaft power P2			Frequency	Hz	50
		Operating range Min. m³/h	Max. m³/h	η Max. m³/h	H(Q=0) m	η Max. m	P2(Q=0) kW	Max. kW	η Max. kW	Operating speed	rpm	2900
actual	208	23.3	80.3	77.1	59	46.9		14.3	14.1	Nominal flow	m³/h	0
Min.	0	/	/	77.1	59	46.9		/	14.1	Nominal head	m	0
Max.	232	/	/	86.3	75.1	59.2		/	19.7	Inlet pressure	kPa	0
										Static head	m	0

Power datas referred to:

hydr. Performance acceptance acc. To EN ISO 9906 Class Grade 3B

Water, pure [100%] ; 4°C; 1000kg/m³; 1.57mm²/s

MEI: N.A - according to Ecodesign Directive 2009/125/EC and Regulation (EU) No.547/2012



LNEE 65-250/150/P25VCS4

Dimensions

Company name
Contact
Phone number
e-mail address

Close coupled

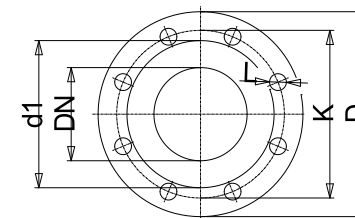
PLM 160 B14 15 kW

Electrical and dimensional data refer to IE3 motor

Dimensions		[mm]	
AD	240		
b1	178		
Bmax	409		
DND	65		
DNS	65		
e	118		
H	475		
h1	237.5		
h2	237.5		
L	712		
p	313		
x	105		

Weight	
Total weight	148 kg

Connections			
Suction nozzle		Discharge nozzle	
DN 65		DN 65	
PN 16		PN 16	
EN1092-2		EN1092-2	
C	20	C	20
D	185	D	185
df	118	df	118
DN	65	DN	65
K	145	K	145
L	4 x 19	L	4 x 19



Value C, D may vary from Standard

Dimensions and weight without obligation

Project	Xlect-20945270	Created by		Last update	8/2/2023
Block	LNEE 65-250/40/P45VCS4	Created on	8/2/2023		