

# LNEE 65-125/55/P25VCS4

## Technical data

Company name  
Contact  
Phone number  
e-mail address

Operating data			
1	Pumpe type	Single head pump	Fluid Water, pure
2	No. of pumps	1	Operating temperature t A °C 4
3	Nominal flow	m <sup>3</sup> /h 0	Max / Min Operating Temperature mech. Seal °C 120 / -25
4	Nominal head	m 0	pH-value at t A 7
5	Static head	m 0	Density at t A kg/m <sup>3</sup> 1000
6	Inlet pressure	kPa 0	Kin. viscosity at t A mm <sup>2</sup> /s 1.569
7	Environmental temperature	°C 20	Vapor pressure at t A kPa 100
8	Available system NPSH	m 0	Altitude 0

Pump data			
9	Lubrication	Standard, Grease lubrication [Std]	
10	Execution		
11	Design	In-Line single head	
12	Operating speed	2900 rpm	Stages 1
13	Suction nozzle	DN 65 / PN 16 / EN1092-2	Impeller Ø
14	Discharge nozzle	DN 65 / PN 16 / EN1092-2	
15	Max. casing pressure	kPa	Flow
16	Max. working pressure	kPa 270.1	
17	Impeller type	Radial impeller	
18	Head H(Q=0)	m 28	Head
19	Max. shaft power	kW 5	
20	Pump weight	kg	Shaft power kW
21	Total weight	kg 72.0	
			Efficiency %
			NPSH 3% m

Materials			
22		<b>Pump</b>	<b>Shaft Seal</b>
23	Volute Casing	Cast iron	Single mechanical seal, without shaft sleeve
24	Casing Cover	Cast iron	eMG12 - Ø22mm BQ7EGG-WA
25	Impeller	Stainless steel / AISI 304	Mechanical seal diameter 22 mm
26	Stub shaft	Stainless steel / AISI 316L	1. Rotating ring Carbon graphite resin impregnated
27	Wear ring	Stainless steel / AISI 304	2. Stationary ring SiC, silicon carbide, sintered press.less
28	Impeller lock nut and washer	Stainless steel / AISI 304	3. Secondary seal Ethylene propylene rubber (EPDM)
29	Impeller key	Stainless steel / AISI 316L	4. Springs CrNiMo - Steel
30	Fill and drain plugs	Nickel-plated brass	5. Others EPDM - WRAS
31			Gaskets of the pump Ethylene propylene rubber (EPDM)
32			
33			
34			
35			
36			
37			
38			
39			
40			
41			

Motor data			
Electrical and dimensional data refer to IE3 motor			
42	Manufacturer	Lowara	
43	Specific design	IE3 3ph Flange Motor	
44	Type	PLM 112 B14 5,5 kW	
45	Rated power	5.5 kW	Rated current 10.4 A
46	Nominal speed	2880 rpm	Rated voltage 400 V
47	Frame size	112	Service factor 1
48	Weight	kg 55.8	Degree of protection IP55

Remarks			
49			
50			
50			
52			

# LNEE 65-125/55/P25VCS4

## Performance curve

Company name  
Contact  
Phone number  
e-mail address

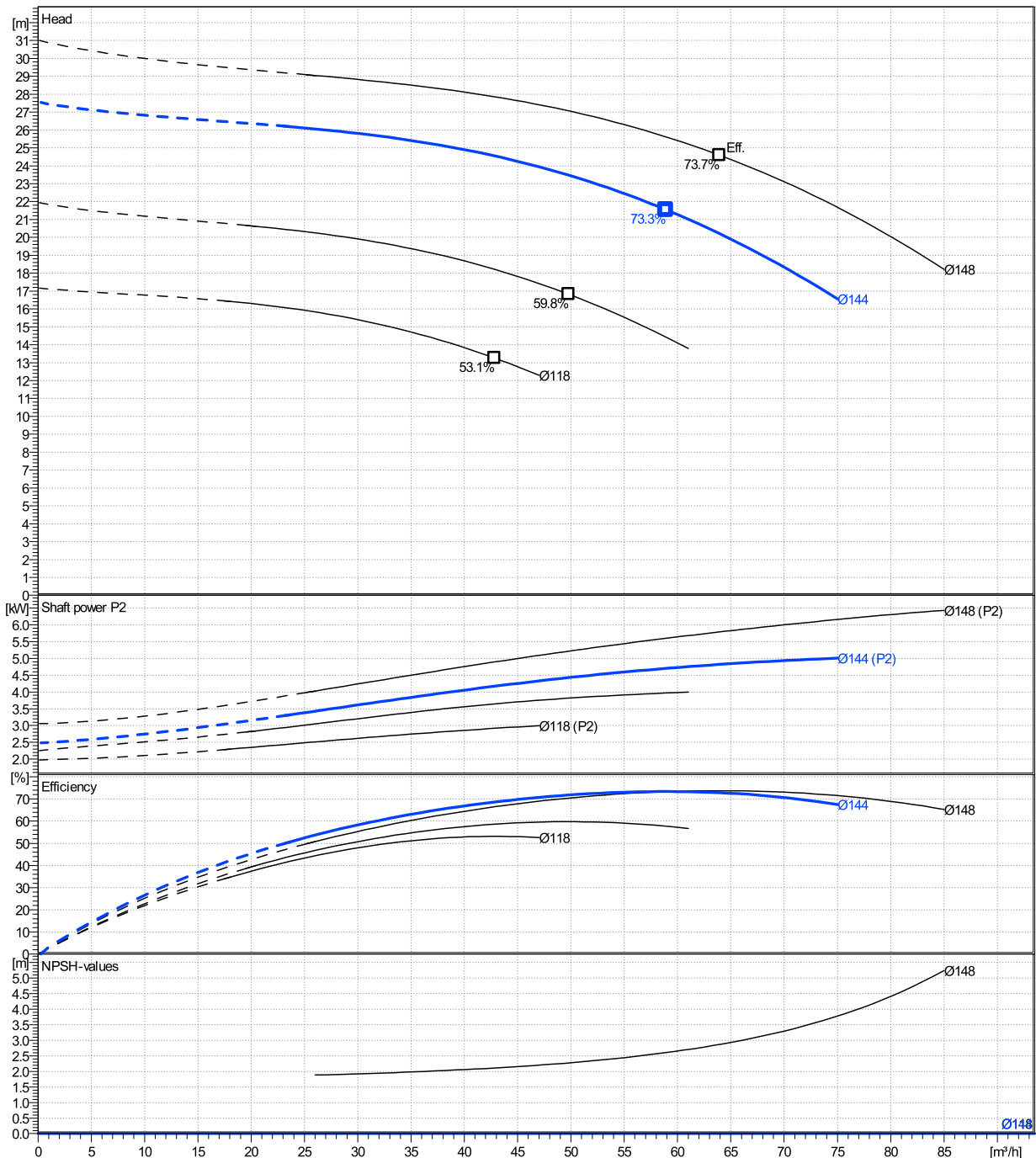
	Ø mm	Pump capacity			Pump head		Shaft power P2			Frequency	Hz	50
		Operating range Min. m³/h	Max. m³/h	η Max. m³/h	H(Q=0) m	η Max. m	P2(Q=0) kW	Max. kW	η Max. kW	Operating speed	rpm	2900
actual	144	23.7	75	58.9	27.5	21.5		5	4.7	Nominal flow	m³/h	0
Min.	0	/	/	42.8	17.2	13.3		/	2.92	Nominal head	m	0
Max.	148	/	/	63.9	31	24.6		/	5.79	Inlet pressure	kPa	0
										Static head	m	0

**Power datas referred to:**

hydr. Performance acceptance acc. To EN ISO 9906 Class Grade 3B

Water, pure [100%] ; 4°C; 1000kg/m³; 1.57mm²/s

MEI: N.A - according to Ecodesign Directive 2009/125/EC and Regulation (EU) No.547/2012



# LNEE 65-125/55/P25VCS4

## Dimensions

Company name  
Contact  
Phone number  
e-mail address

Close coupled

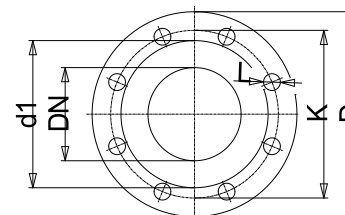
PLM 112 B14 5,5 kW

Electrical and dimensional data refer to IE3 motor

Dimensions		[ mm ]	
AD	168		
b1	148		
Bmax	316		
DND	65		
DNS	65		
e	105		
H	360		
h1	190		
h2	170		
L	583		
p	214		
x	100		

Weight	
Total weight	72 kg

Connections			
<b>Suction nozzle</b>		<b>Discharge nozzle</b>	
DN 65		DN 65	
PN 16		PN 16	
EN1092-2		EN1092-2	
C	20	C	20
D	185	D	185
df	118	df	118
DN	65	DN	65
K	145	K	145
L	4 x 19	L	4 x 19



Value C, D may vary from Standard

### Dimensions and weight without obligation

Project	Xlect-20945270	Created by		Last update	8/2/2023
Block	LNEE 65-125/11/P45RCS4	Created on	8/2/2023		