

## LNEE 50-250/150/P25VCS4

### Technical data

Company name  
Contact  
Phone number  
e-mail address

#### Operating data

1	Pumpe type	Single head pump	Fluid	Water, pure
2	No. of pumps	1	Operating temperature t A	°C 4
3	Nominal flow	m <sup>3</sup> /h 0	Max / Min Operating Temperature mech. Seal	°C 120 / -25
4	Nominal head	m 0	pH-value at t A	7
5	Static head	m 0	Density at t A	kg/m <sup>3</sup> 1000
6	Inlet pressure	kPa 0	Kin. viscosity at t A	mm <sup>2</sup> /s 1.569
7	Environmental temperature	°C 20	Vapor pressure at t A	kPa 100
8	Available system NPSH	m 0	Altitude	0

#### Pump data

9	Lubrication	Standard, Grease lubrication [Std]		
10	Execution	In-Line single head		
11	Design	Impeller Ø		
12	Operating speed	2900 rpm	Stages	1
13	Suction nozzle	DN 50 /	PN 16 /	EN1092-2
14	Discharge nozzle	DN 50 /	PN 16 /	EN1092-2
15	Max. casing pressure	kPa		
16	Max. working pressure	kPa	719.9	
17	Impeller type	Radial impeller		
18	Head H(Q=0)	m	73	
19	Max. shaft power	kW	14.7	
20	Pump weight	kg		
21	Total weight	kg	144.0	

#### Materials

Pump		Shaft Seal	
22			
23	Volute Casing	Cast iron	Single mechanical seal, without shaft sleeve
24	Casing Cover	Cast iron	eMG12 - Ø28mm
25	Impeller	Stainless steel / AISI 304	Mechanical seal diameter
26	Stub shaft	Stainless steel / AISI 316L	28 mm
27	Wear ring	Stainless steel / AISI 304	1. Rotating ring
28	Impeller lock nut and washer	Stainless steel / AISI 304	2. Stationary ring
29	Impeller key	Stainless steel / AISI 316L	3. Secondary seal
30	Fill and drain plugs	Nickel-plated brass	4. Springs
31			5. Others
32			Gaskets of the pump
33			Ethylene propylene rubber (EPDM)
34			
35			
36			
37			
38			
39			
40			
41			

#### Motor data

Electrical and dimensional data refer to IE3 motor

42	Manufacturer	Lowara		
43	Specific design	IE3 3ph Flange Motor		
44	Type	PLM 160 B14 15 kW		
45	Rated power	15 kW	Rated current	26.6 A
46	Nominal speed	2940 rpm	Rated voltage	400 V
47	Frame size	160	Service factor	1
48	Weight	kg 110.8	Degree of protection	IP55

#### Remarks

49	
50	
51	
52	

Project	Xylect-20945270	Created by		Last update	8/2/2023
Block	LNEE 50-250/30/P45RCS4	Created on	8/2/2023		

# LNEE 50-250/150/P25VCS4

## Performance curve

Company name  
Contact  
Phone number  
e-mail address

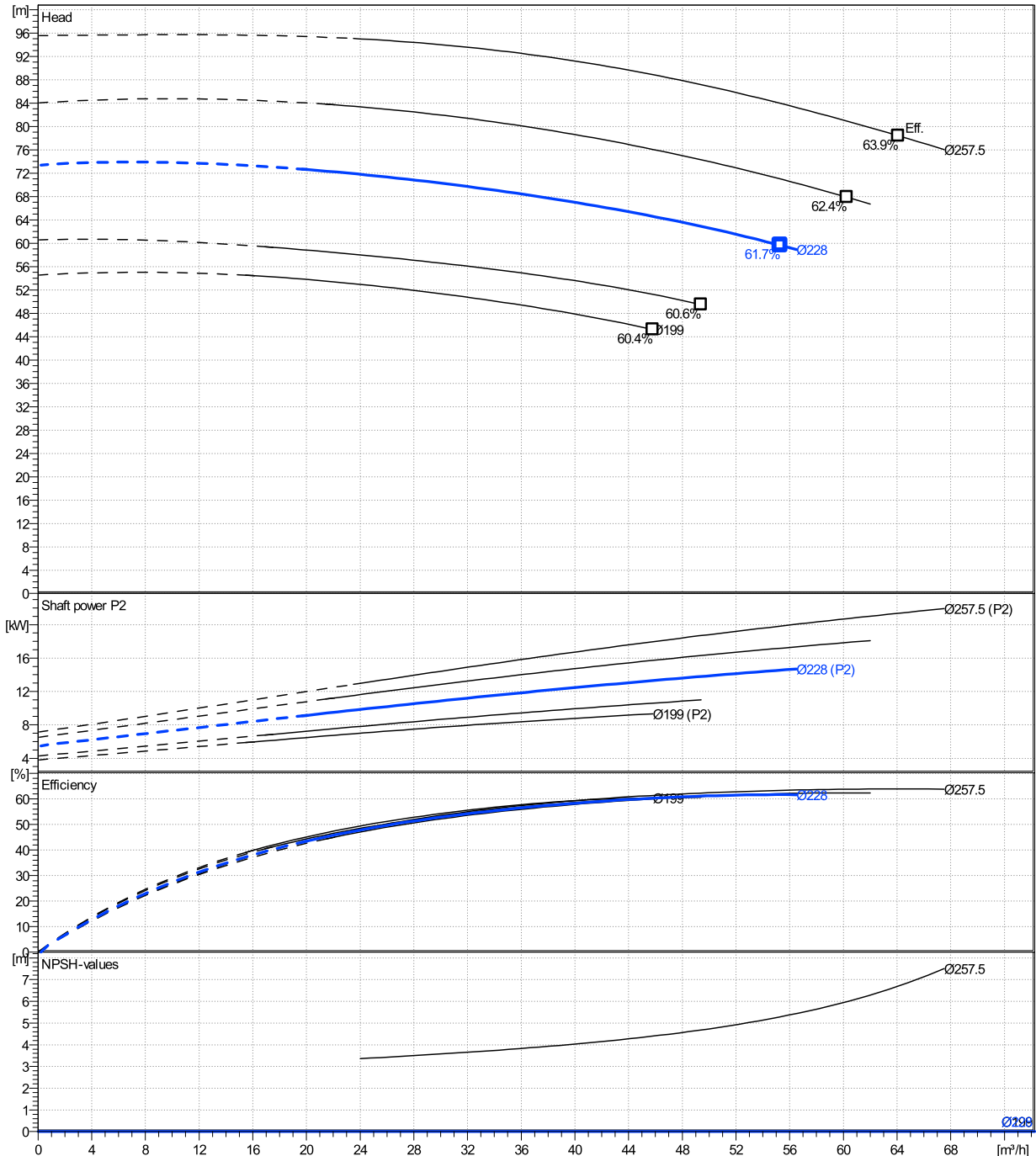
	Ø mm	Pump capacity			Pump head		Shaft power P2			Frequency		
		Operating range Min. m³/h	Max. m³/h	η Max. m³/h	H(Q=0) m	η Max. m	P2(Q=0) kW	Max. kW	η Max. kW	Hz		
actual	228	20.1	56.5	55.3	73.4	59.6		14.7	14.5	Operating speed	rpm	2900
Min.	0	/	/	45.8	54.6	45.2		/	9.33	Nominal flow	m³/h	0
Max.	257	/	/	64.1	95.6	78.4		/	21.4	Nominal head	m	0
										Inlet pressure	kPa	0
										Static head	m	0

**Power datas referred to:**

hydr. Performance acceptance acc. To EN ISO 9906 Class Grade 3B

Water, pure [100%] ; 4°C; 1000kg/m³; 1.57mm²/s

MEI: N.A - according to Ecodesign Directive 2009/125/EC and Regulation (EU) No.547/2012



# LNEE 50-250/150/P25VCS4

## Dimensions

Company name  
Contact  
Phone number  
e-mail address

Close coupled

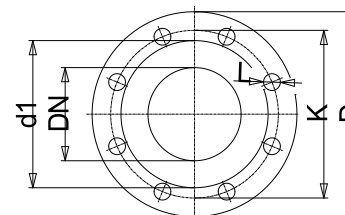
PLM 160 B14 15 kW

Electrical and dimensional data refer to IE3 motor

Dimensions		[ mm ]	
AD	240		
b1	168		
Bmax	408		
DND	50		
DNS	50		
e	111		
H	440		
h1	220		
h2	220		
L	705		
p	313		
x	108		

Weight	
Total weight	144 kg

Connections			
<b>Suction nozzle</b>		<b>Discharge nozzle</b>	
DN 50		DN 50	
PN 16		PN 16	
EN1092-2		EN1092-2	
C	20	C	20
D	165	D	165
df	99	df	99
DN	50	DN	50
K	125	K	125
L	4 x 19	L	4 x 19



Value C, D may vary from Standard

### Dimensions and weight without obligation

Project	Xlect-20945270	Created by		Last update	8/2/2023
Block	LNEE 50-250/30/P45RCS4	Created on	8/2/2023		