

LNEE 50-200/92/P25VCS4

Technical data

Company name
Contact
Phone number
e-mail address

Operating data			
1	Pumpe type	Single head pump	Fluid Water, pure
2	No. of pumps	1	Operating temperature t A °C 4
3	Nominal flow	m ³ /h 0	Max / Min Operating Temperature mech. Seal °C 120 / -25
4	Nominal head	m 0	pH-value at t A 7
5	Static head	m 0	Density at t A kg/m ³ 1000
6	Inlet pressure	kPa 0	Kin. viscosity at t A mm ² /s 1.569
7	Environmental temperature	°C 20	Vapor pressure at t A kPa 100
8	Available system NPSH	m 0	Altitude 0

Pump data			
9	Lubrication	Standard, Grease lubrication [Std]	
10	Execution		
11	Design	In-Line single head	
12	Operating speed	2900 rpm	Stages 1
13	Suction nozzle	DN 50 / PN 16 / EN1092-2	Impeller Ø
14	Discharge nozzle	DN 50 / PN 16 / EN1092-2	
15	Max. casing pressure	kPa	Flow
16	Max. working pressure	kPa 477.7	
17	Impeller type	Radial impeller	
18	Head H(Q=0)	m 49	Head
19	Max. shaft power	kW 9.1	
20	Pump weight	kg	Shaft power kW
21	Total weight	kg 101.0	
			Efficiency %
			NPSH 3% m

Materials			
22			
23	Volute Casing	Cast iron	Shaft Seal
24	Casing Cover	Cast iron	
25	Impeller	Stainless steel / AISI 304	Single mechanical seal, without shaft sleeve
26	Stub shaft	Stainless steel / AISI 316L	eMG12 - Ø22mm
27	Wear ring	Stainless steel / AISI 304	Mechanical seal diameter 22 mm
28	Impeller lock nut and washer	Stainless steel / AISI 304	1. Rotating ring
29	Impeller key	Stainless steel / AISI 316L	2. Stationary ring
30	Fill and drain plugs	Nickel-plated brass	3. Secondary seal
31			4. Springs
32			5. Others
33			Gaskets of the pump
34			Ethylene propylene rubber (EPDM)
35			
36			
37			
38			
39			
40			
41			

Motor data			
Electrical and dimensional data refer to IE3 motor			
42	Manufacturer	Lowara	
43	Specific design	IE3 3ph Flange Motor	
44	Type	PLM 132 B14 9,2 kW	
45	Rated power	9.2 kW	Rated current 17.4 A
46	Nominal speed	2920 rpm	Rated voltage 400 V
47	Frame size	132	Service factor 1
48	Weight	kg 70.4	Degree of protection IP55

Remarks			
49			
50			
50			
52			

LNEE 50-200/92/P25VCS4

Performance curve

Company name
Contact
Phone number
e-mail address

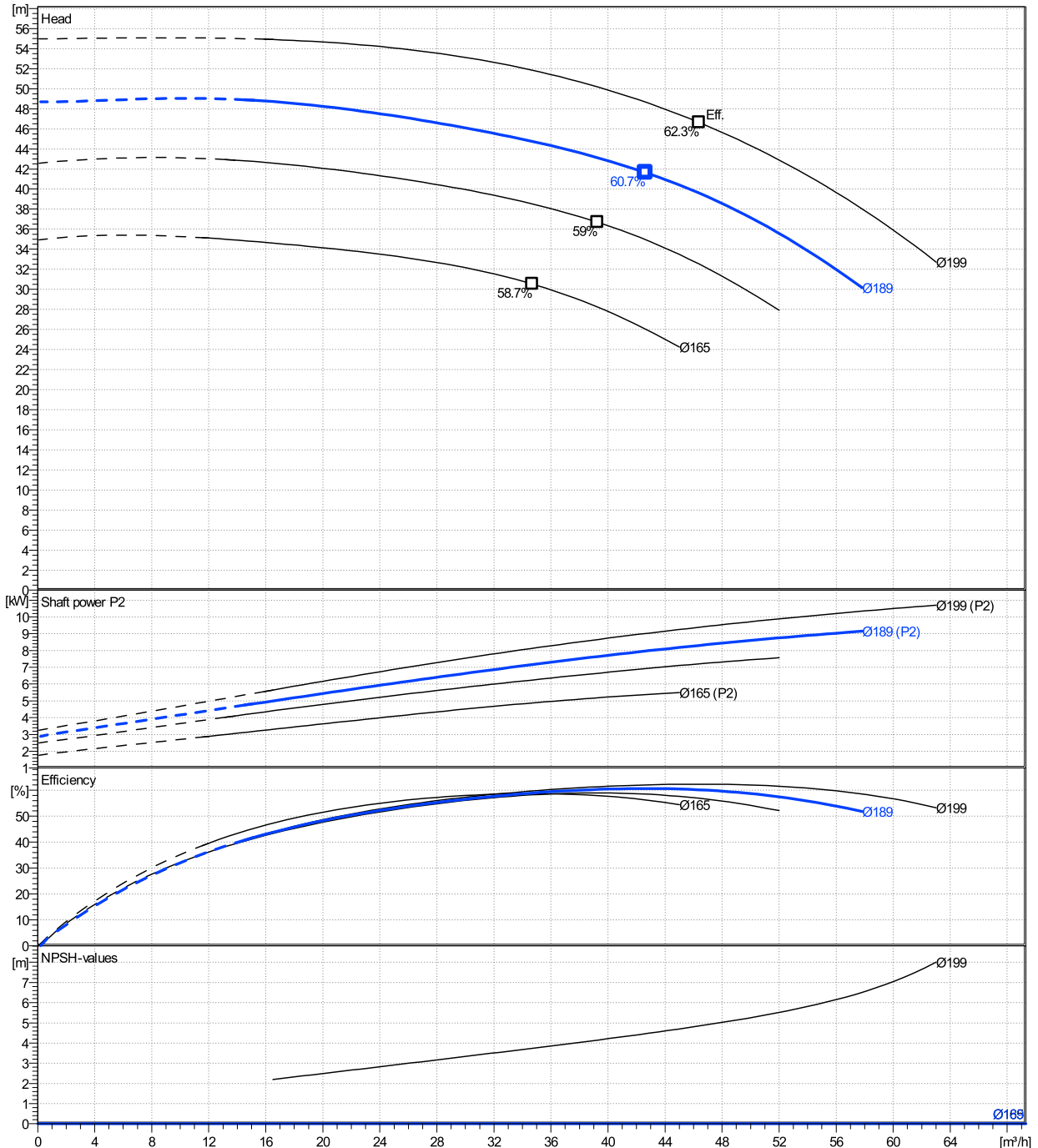
	Ø mm	Pump capacity			Pump head		Shaft power P2			Frequency		Hz	50
		Operating range Min. m ³ /h	Max. m ³ /h	η Max. m ³ /h	H(Q=0) m	η Max. m	P2(Q=0) kW	Max. kW	η Max. kW	Operating speed rpm	2900		
actual	189	15.2	57.8	42.6	48.7	41.6	9.14	7.96		Nominal flow	m ³ /h	0	
Min.	0	/	/	34.7	34.9	30.5	/	4.87		Nominal head	m	0	
Max.	199	/	/	46.4	55	46.6	/	9.38		Inlet pressure	kPa	0	
										Static head	m	0	

Power datas referred to:

hydr. Performance acceptance acc. To EN ISO 9906 Class Grade 3B

Water, pure [100%] ; 4°C; 1000kg/m³; 1.57mm²/s

MEI: N.A - according to Ecodesign Directive 2009/125/EC and Regulation (EU) No.547/2012



LNEE 50-200/92/P25VCS4

Dimensions

Company name
Contact
Phone number
e-mail address

Close coupled

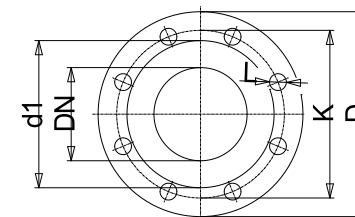
PLM 132 B14 9,2 kW

Electrical and dimensional data refer to IE3 motor

Dimensions		[mm]	
AD	191		
b1	168		
Bmax	359		
DND	50		
DNS	50		
e	111		
H	440		
h1	220		
h2	220		
L	616		
p	256		
x	108		

Weight	
Total weight	101 kg

Connections			
Suction nozzle		Discharge nozzle	
DN 50		DN 50	
PN 16		PN 16	
EN1092-2		EN1092-2	
C	20	C	20
D	165	D	165
df	99	df	99
DN	50	DN	50
K	125	K	125
L	4 x 19	L	4 x 19



Value C, D may vary from Standard

Dimensions and weight without obligation

Project	Xlect-20945270	Created by		Last update	8/2/2023
Block	LNEE 50-200/15/P45RCS4	Created on	8/2/2023		