



# LNEE 50-160/40/P25VCS4

## Performance curve

Company name  
Contact  
Phone number  
e-mail address

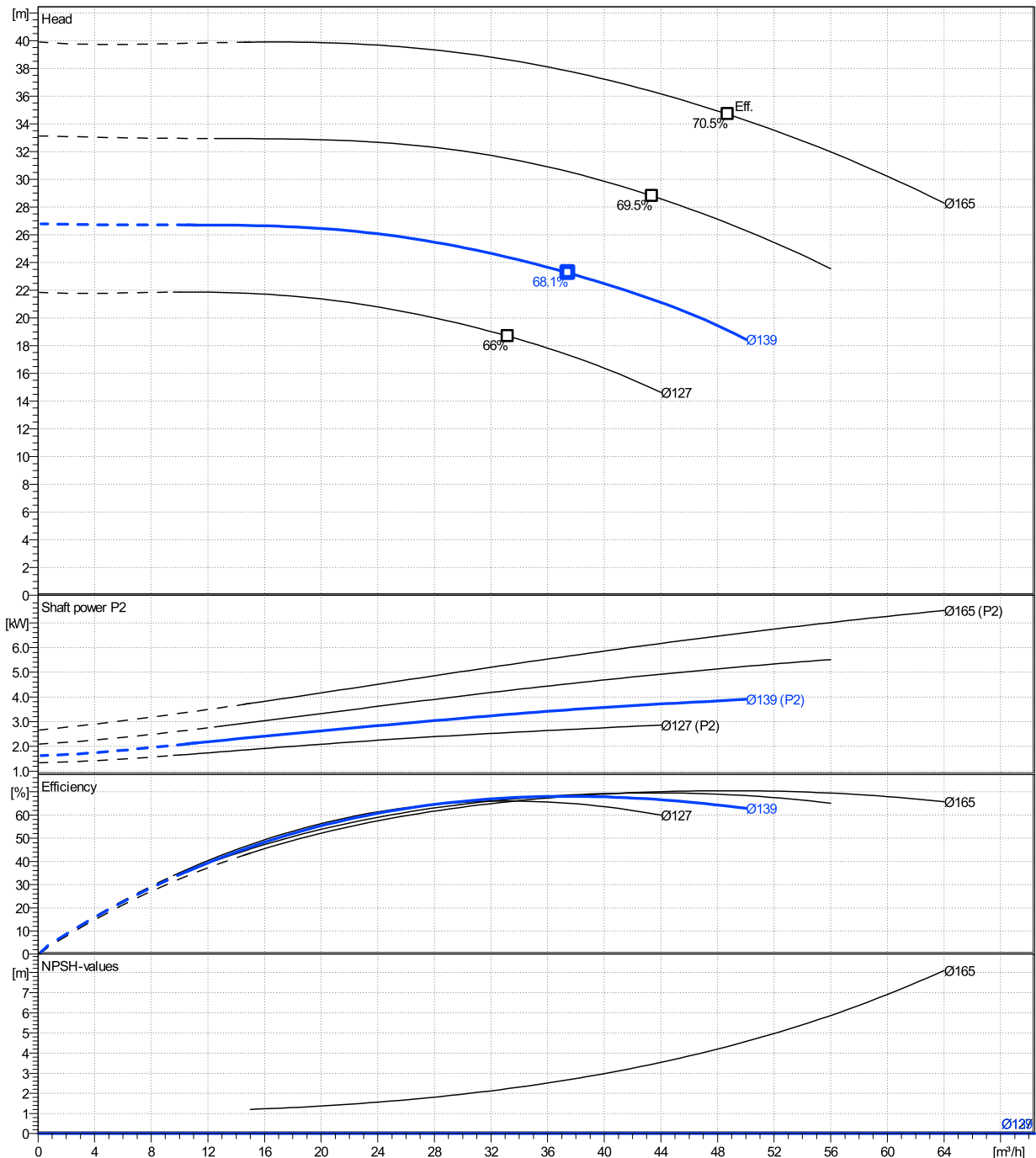
	Ø mm	Pump capacity			Pump head		Shaft power P2			Frequency	Hz	50
		Operating range Min. m³/h	Max. m³/h	η Max. m³/h	H(Q=0) m	η Max. m	P2(Q=0) kW	Max. kW	η Max. kW	Operating speed	rpm	2900
actual	139	11.2	50	37.4	26.8	23.2	3.9	3.48	Nominal flow	m³/h	0	
Min.	0	/	/	33.2	21.8	18.7	/	2.56	Nominal head	m	0	
Max.	165	/	/	48.7	39.9	34.7	/	6.51	Inlet pressure	kPa	0	
									Static head	m	0	

**Power datas referred to:**

hydr. Performance acceptance acc. To EN ISO 9906 Class Grade 3B

Water, pure [100%] ; 4°C; 1000kg/m³; 1.57mm²/s

MEI: N.A - according to Ecodesign Directive 2009/125/EC and Regulation (EU) No.547/2012



# LNEE 50-160/40/P25VCS4

## Dimensions

Company name  
Contact  
Phone number  
e-mail address

Close coupled

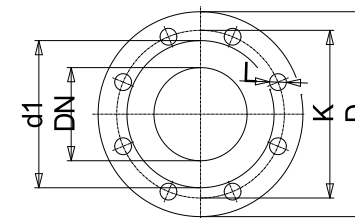
PLM 112R B14 4 kW

Electrical and dimensional data refer to IE3 motor

Dimensions		[ mm ]	
AD	154		
b1	128		
Bmax	272		
DND	50		
DNS	50		
e	116		
H	340		
h1	180		
h2	160		
L	535		
p	197		
x	96		

Weight	
Total weight	51 kg

Connections			
<b>Suction nozzle</b>		<b>Discharge nozzle</b>	
DN 50		DN 50	
PN 16		PN 16	
EN1092-2		EN1092-2	
C	20	C	20
D	165	D	165
df	99	df	99
DN	50	DN	50
K	125	K	125
L	4 x 19	L	4 x 19



Value C, D may vary from Standard

### Dimensions and weight without obligation

Project	Xylect-20944933	Created by		Last update	8/2/2023
Block	LNEE 50-160/11/P45RCS4	Created on	8/2/2023		