

LNEE 40-160/55/P25VCS4

Technical data

Company name
Contact
Phone number
e-mail address

| Operating data | | | | | |
|----------------|---------------------------|-------------------|----|--|--------------------------|
| 1 | Pumpe type | Single head pump | | Fluid | Water, pure |
| 2 | No. of pumps | 1 | | Operating temperature t A | °C 4 |
| 3 | Nominal flow | m ³ /h | 0 | Max / Min Operating Temperature mech. Seal | °C 120 / -25 |
| 4 | Nominal head | m | 0 | pH-value at t A | 7 |
| 5 | Static head | m | 0 | Density at t A | kg/m ³ 1000 |
| 6 | Inlet pressure | kPa | 0 | Kin. viscosity at t A | mm ² /s 1.569 |
| 7 | Environmental temperature | °C | 20 | Vapor pressure at t A | kPa 100 |
| 8 | Available system NPSH | m | 0 | Altitude | 0 |

| Pump data | | | | | | |
|-----------|-----------------------|------------------------------------|----------|------------|---------------------------|---------------------------|
| 9 | Lubrication | Standard, Grease lubrication [Std] | | | | |
| 10 | Execution | | | | | |
| 11 | Design | In-Line single head | | Impeller Ø | Max. mm 171 | |
| 12 | Operating speed | 2900 rpm | Stages 1 | | designed mm 171 | |
| 13 | Suction nozzle | DN 40 / | PN 16 / | | EN1092-2 | Min. mm 137 |
| 14 | Discharge nozzle | DN 40 / | PN 16 / | EN1092-2 | Flow | Nominal m ³ /h |
| 15 | Max. casing pressure | kPa | | | | Max- m ³ /h 48 |
| 16 | Max. working pressure | kPa | 388.3 | | Min- m ³ /h 10 | |
| 17 | Impeller type | Radial impeller | | Head | Nominal m | |
| 18 | Head H(Q=0) | m | 40 | | at Qmax m 18.1 | |
| 19 | Max. shaft power | kW | 4.9 | | at Qmin m 40.7 | |
| 20 | Pump weight | kg | | | Shaft power kW | |
| 21 | Total weight | kg | 56.0 | | Efficiency % | |
| | | | | | NPSH 3% m | |

| Materials | | | | | |
|-----------|------------------------------|-----------------------------|--|--|---|
| 22 | | Pump | | Shaft Seal | |
| 23 | Volute Casing | Cast iron | | Single mechanical seal, without shaft sleeve | |
| 24 | Casing Cover | Cast iron | | eMG12 - Ø22mm | BQ7EGG-WA |
| 25 | Impeller | Stainless steel / AISI 304 | | Mechanical seal diameter | 22 mm |
| 26 | Stub shaft | Stainless steel / AISI 316L | | 1. Rotating ring | Carbon graphite resin impregnated |
| 27 | Wear ring | Stainless steel / AISI 304 | | 2. Stationary ring | SiC, silicon carbide, sintered press.less |
| 28 | Impeller lock nut and washer | Stainless steel / AISI 304 | | 3. Secondary seal | Ethylene propylene rubber (EPDM) |
| 29 | Impeller key | Stainless steel / AISI 316L | | 4. Springs | CrNiMo - Steel |
| 30 | Fill and drain plugs | Nickel-plated brass | | 5. Others | EPDM - WRAS |
| 31 | | | | Gaskets of the pump | Ethylene propylene rubber (EPDM) |
| 32 | | | | | |
| 33 | | | | | |
| 34 | | | | | |
| 35 | | | | | |
| 36 | | | | | |
| 37 | | | | | |
| 38 | | | | | |
| 39 | | | | | |
| 40 | | | | | |
| 41 | | | | | |

| Motor data | | | | | |
|--|-----------------|----------------------|----------------------|--------|--|
| Electrical and dimensional data refer to IE3 motor | | | | | |
| 42 | Manufacturer | Lowara | | | |
| 43 | Specific design | IE3 3ph Flange Motor | | | |
| 44 | Type | PLM 112 B14 5,5 kW | | | |
| 45 | Rated power | 5.5 kW | Rated current | 10.4 A | |
| 46 | Nominal speed | 2880 rpm | Rated voltage | 400 V | |
| 47 | Frame size | 112 | Service factor | 1 | |
| 48 | Weight | kg 55.8 | Degree of protection | IP55 | |

| Remarks | | | | | |
|---------|--|--|--|--|--|
| 49 | | | | | |
| 50 | | | | | |
| 50 | | | | | |
| 52 | | | | | |

LNEE 40-160/55/P25VCS4

Performance curve

Company name
Contact
Phone number
e-mail address

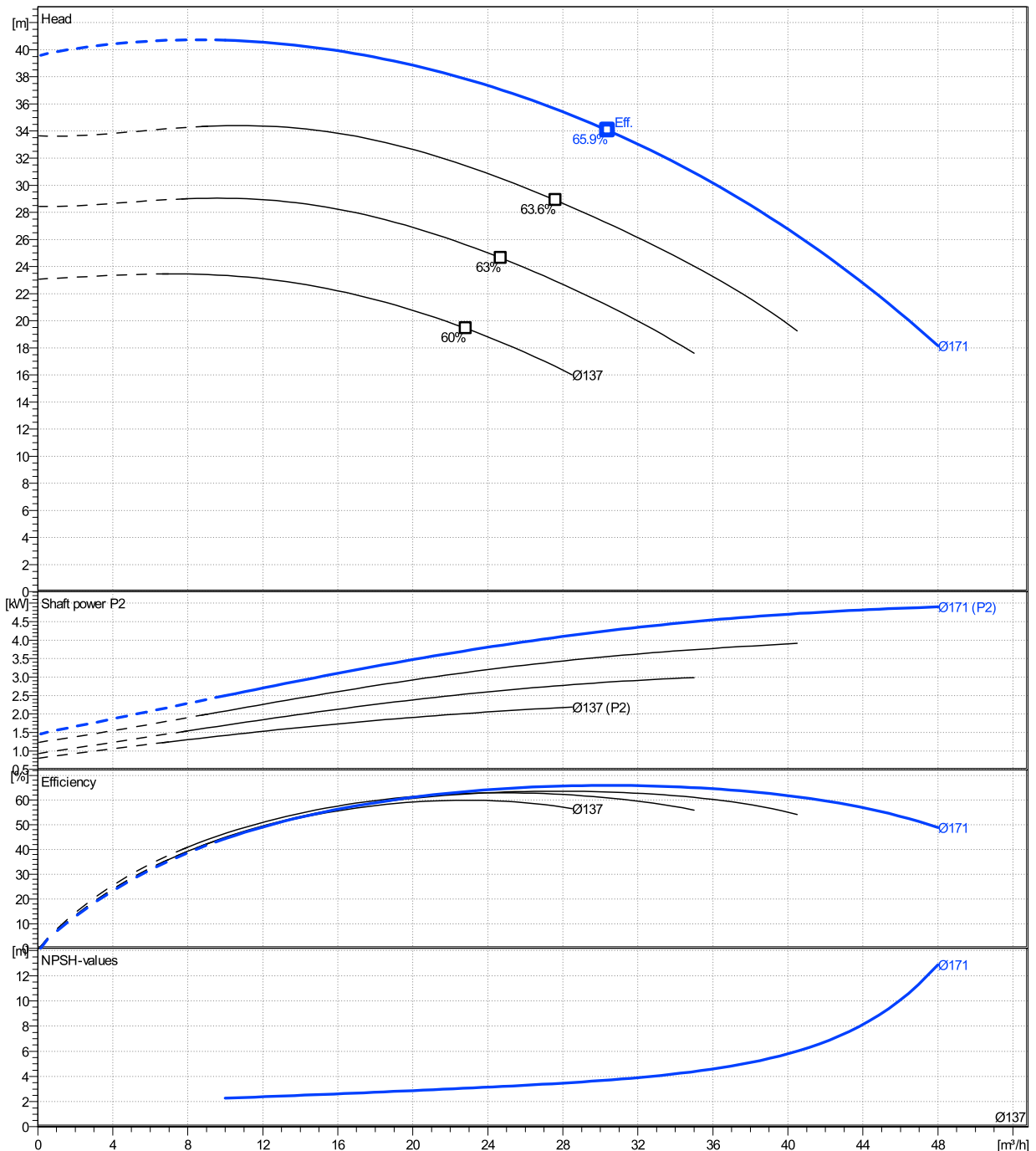
| | Ø mm | Pump capacity | | | Pump head | | Shaft power P2 | | | Frequency | Hz | 50 |
|--------|---------|------------------------------|-----------|----------------|-------------|-------------|----------------|---------|----------------|-----------------|-----|------|
| | | Operating range Min. m³/h | Max. m³/h | η Max. m³/h | H(Q=0) m | η Max. m | P2(Q=0) kW | Max. kW | η Max. kW | Operating speed | rpm | 2900 |
| actual | 171 | 10 | 48 | 30.4 | 39.6 | 34 | 4.9 | 4.25 | Nominal flow | m³/h | 0 | |
| Min. | 0 | / | / | 22.8 | 23.1 | 19.4 | / | 2.01 | Nominal head | m | 0 | |
| Max. | 171 | / | / | 30.4 | 39.6 | 34 | / | 4.25 | Inlet pressure | kPa | 0 | |
| | | | | | | | | | Static head | m | 0 | |

Power datas referred to:

hydr. Performance acceptance acc. To EN ISO 9906 Class Grade 3B

Water, pure [100%] ; 4°C; 1000kg/m³; 1.57mm²/s

MEI: N.A - according to Ecodesign Directive 2009/125/EC and Regulation (EU) No.547/2012



LNEE 40-160/55/P25VCS4

Dimensions

Company name
Contact
Phone number
e-mail address

Close coupled

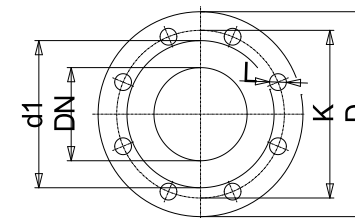
PLM 112 B14 5,5 kW

Electrical and dimensional data refer to IE3 motor

| Dimensions | | [mm] | |
|------------|-----|--------|--|
| AD | 168 | | |
| b1 | 128 | | |
| Bmax | 288 | | |
| DND | 40 | | |
| DNS | 40 | | |
| e | 100 | | |
| H | 320 | | |
| h1 | 160 | | |
| h2 | 160 | | |
| L | 563 | | |
| p | 214 | | |
| x | 94 | | |

| Weight | |
|--------------|-------|
| Total weight | 56 kg |

| Connections | | | |
|-----------------------|--------|-------------------------|--------|
| Suction nozzle | | Discharge nozzle | |
| DN 40 | | DN 40 | |
| PN 16 | | PN 16 | |
| EN1092-2 | | EN1092-2 | |
| C | 18 | C | 18 |
| D | 150 | D | 150 |
| df | 84 | df | 84 |
| DN | 40 | DN | 40 |
| K | 110 | K | 110 |
| L | 4 x 19 | L | 4 x 19 |



Value C, D may vary from Standard

Dimensions and weight without obligation

| | | | | | |
|---------|------------------------|------------|----------|-------------|----------|
| Project | Xlect-20944784 | Created by | | Last update | 8/2/2023 |
| Block | LNEE 40-160/07/X45RCS4 | Created on | 8/2/2023 | | |