

LNEE 32-160/07/S25RCS4

Technical data

Company name
Contact
Phone number
e-mail address

Operating data			
1	Pumpe type	Single head pump	Fluid Water, pure
2	No. of pumps	1	Operating temperature t A °C 4
3	Nominal flow	m ³ /h 0	Max / Min Operating Temperature mech. Seal °C 120 / -25
4	Nominal head	m 0	pH-value at t A 7
5	Static head	m 0	Density at t A kg/m ³ 1000
6	Inlet pressure	kPa 0	Kin. viscosity at t A mm ² /s 1.569
7	Environmental temperature	°C 20	Vapor pressure at t A kPa 100
8	Available system NPSH	m 0	Altitude 0

Pump data			
9	Lubrication	Standard, Grease lubrication [Std]	
10	Execution		
11	Design	In-Line single head	
12	Operating speed	2900 rpm	Stages 1
13	Suction nozzle	DN 32 / PN 16 / EN1092-2	Impeller Ø
14	Discharge nozzle	DN 32 / PN 16 / EN1092-2	
15	Max. casing pressure	kPa	Flow
16	Max. working pressure	kPa 102.5	
17	Impeller type	Radial impeller	
18	Head H(Q=0)	m 10	Head
19	Max. shaft power	kW .6	
20	Pump weight	kg	Shaft power kW
21	Total weight	kg 31.0	Efficiency %
			NPSH 3% m

Materials			
22		Pump	Shaft Seal
23	Volute Casing	Cast iron	Single mechanical seal, without shaft sleeve
24	Casing Cover	Cast iron	eMG12 - Ø14mm BQ7EGG-WA
25	Impeller	Stainless steel / AISI 304	Mechanical seal diameter 14 mm
26	Stub shaft	Stainless steel / AISI 316L	1. Rotating ring Carbon graphite resin impregnated
27	Wear ring	Stainless steel / AISI 304	2. Stationary ring SiC, silicon carbide, sintered press.less
28	Impeller lock nut and washer	Stainless steel / AISI 304	3. Secondary seal Ethylene propylene rubber (EPDM)
29	Impeller key	Stainless steel / AISI 316L	4. Springs CrNiMo - Steel
30	Fill and drain plugs	Nickel-plated brass	5. Others EPDM - WRAS
31			Gaskets of the pump Ethylene propylene rubber (EPDM)
32			
33			
34			
35			
36			
37			
38			
39			
40			
41			

Motor data			
42	Manufacturer	Lowara	
43	Specific design	IE3 3ph Flange Motor	
44	Type	SM 90R B14 0,75 kW	
45	Rated power	0.75 kW	Rated current 1.7 A
46	Nominal speed	2875 rpm	Rated voltage 400 V
47	Frame size	90R	Service factor 1
48	Weight	kg 9.6	Degree of protection IP55

Remarks			
49			
50			
50			
52			

LNEE 32-160/07/S25RCS4

Performance curve

Company name
Contact
Phone number
e-mail address

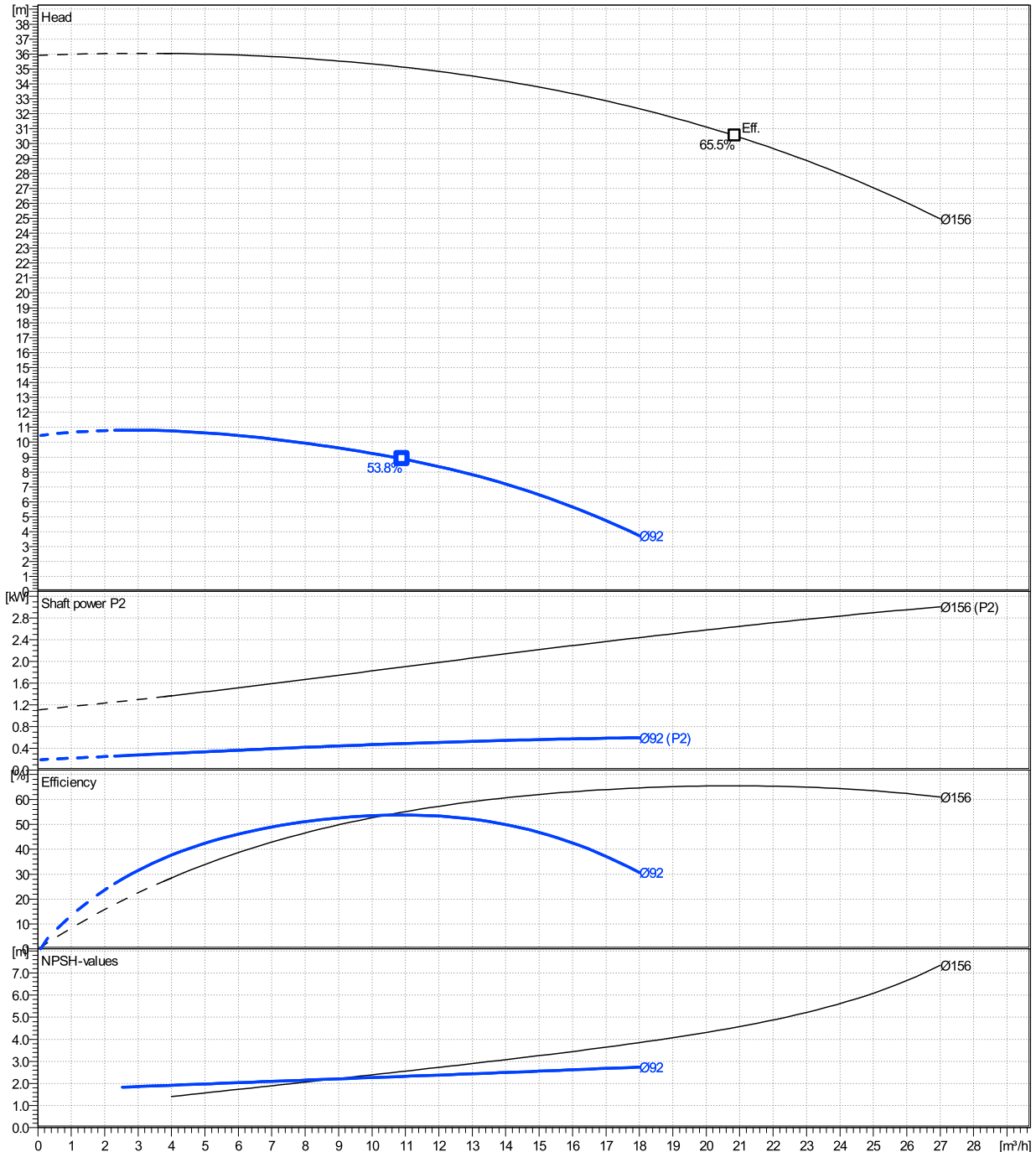
	Ø mm	Pump capacity			Pump head		Shaft power P2			Frequency	Hz	50
		Operating range Min. m³/h	Max. m³/h	η Max. m³/h	H(Q=0) m	η Max. m	P2(Q=0) kW	Max. kW	η Max. kW	Operating speed	rpm	2900
actual	92	2.53	18	10.9	10.4	8.88	0.597	0.491	Nominal flow	m³/h	0	
Min.	0	/	/	10.9	10.4	8.88	/	0.491	Nominal head	m	0	
Max.	156	/	/	20.9	35.9	30.5	/	2.64	Inlet pressure	kPa	0	
									Static head	m	0	

Power datas referred to:

hydr. Performance acceptance acc. To EN ISO 9906 Class Grade 3B

Water, pure [100%] ; 4°C; 1000kg/m³; 1.57mm²/s

MEI: N.A - according to Ecodesign Directive 2009/125/EC and Regulation (EU) No.547/2012



LNEE 32-160/07/S25RCS4

Dimensions

Company name
Contact
Phone number
e-mail address

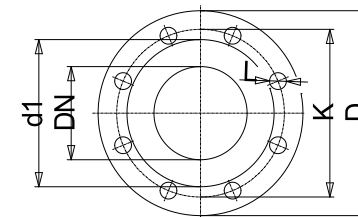
Close coupled

SM 90R B14 0,75 kW

Dimensions		[mm]	
AD	129		
b1	123		
Bmax	249		
DND	32		
DNS	32		
e	90		
H	320		
h1	160		
h2	160		
L	453		
p	155		
x	75		

Weight	
Total weight	31 kg

Connections			
Suction nozzle		Discharge nozzle	
DN 32		DN 32	
PN 16		PN 16	
EN1092-2		EN1092-2	
C	18	C	18
D	140	D	140
df	76	df	76
DN	32	DN	32
K	100	K	100
L	4 x 19	L	4 x 19



Value C, D may vary from Standard

Dimensions and weight without obligation

Project	Xlect-20944784	Created by		Last update	8/2/2023
Block	LNEE 32-160/30/P25RCS4	Created on	8/2/2023		