



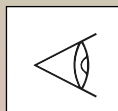
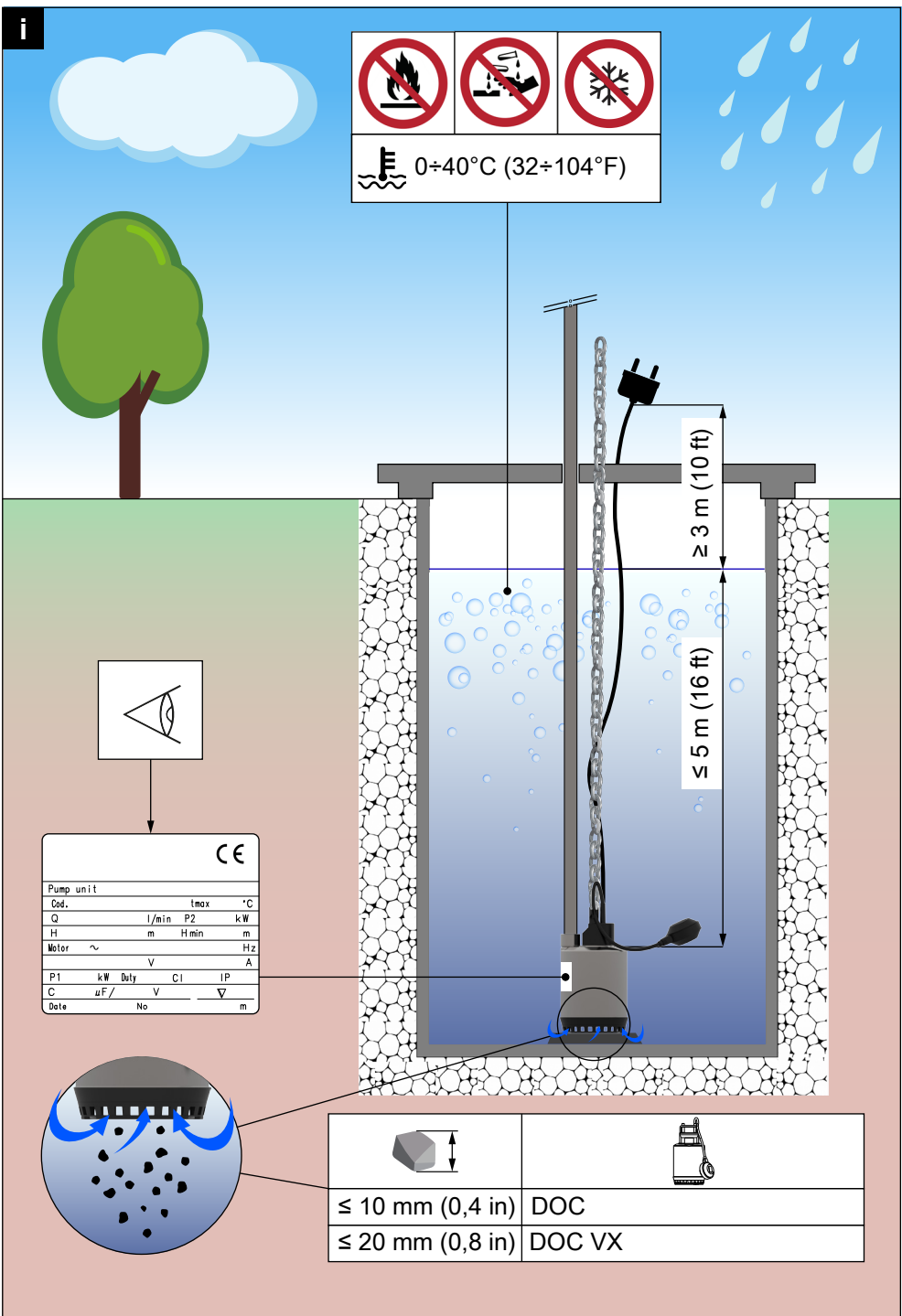
Quick Startup Guide



DOC

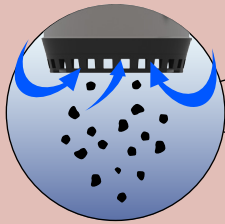
i

0±40°C (32÷104°F)



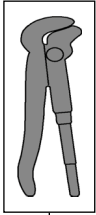
CE

Pump unit			
Cod.		tmax	°C
Q	l/min	P2	kW
H	m	Hmin	m
Motor	~		Hz
	V		A
P1	kW	Duty	C1 IP
C	µF/	V	∇
Date	No		m

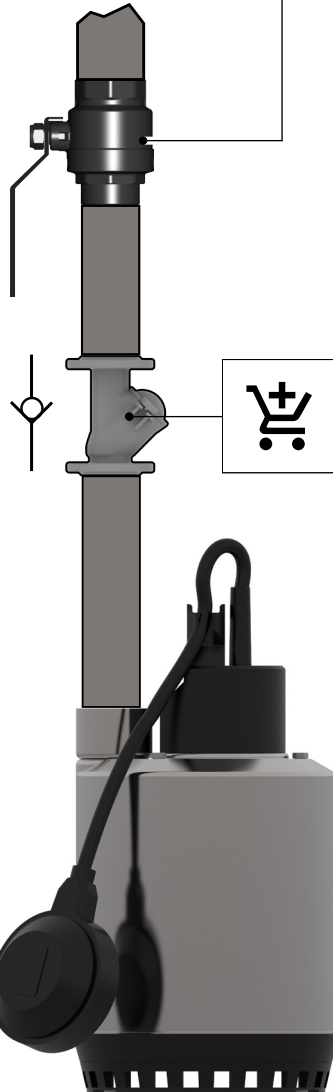


≤ 10 mm (0,4 in)	DOC
≤ 20 mm (0,8 in)	DOC VX

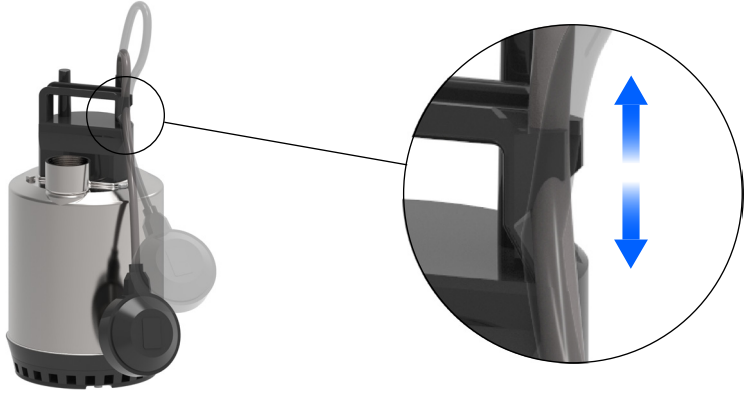
1



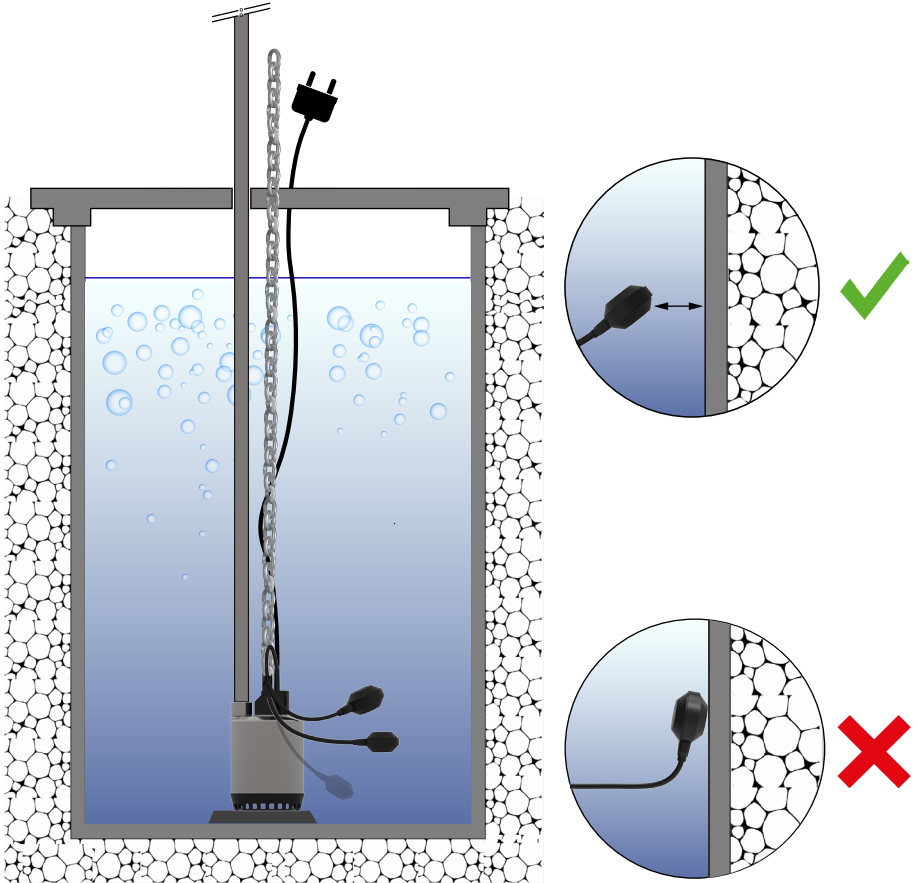
2



3

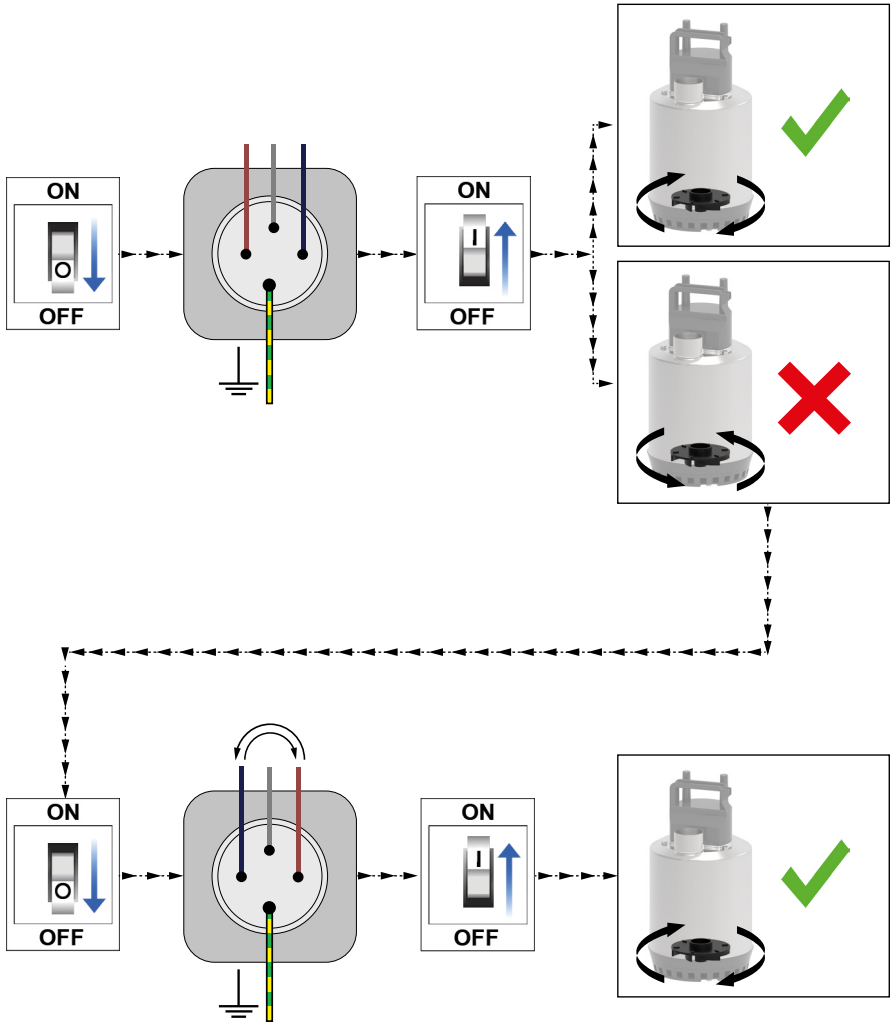
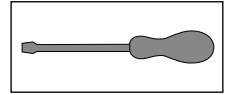
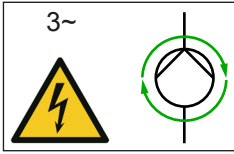


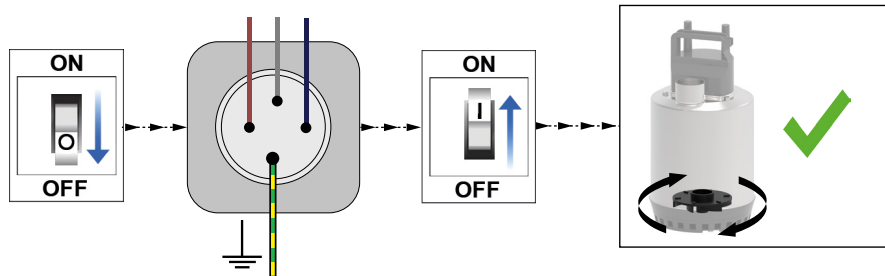
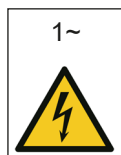
i





4a





<http://lowara.com/pumps-circulators/submersible-dewatering-pumps/doc-submersible-pumps-for-dirty-water/?tab=literature>

Xylem |'zīləm|



Xylem Service Italia S.r.l.
Via Vittorio Lombardi 14
Montecchio Maggiore (VI) 36075
Italy

© 2019 Xylem, Inc.

Cod. 001082044 rev.A ed.02/2019