

**Qty. Description**

1 MTH 4-5/5 A-W-A-AQQV



Note! Product picture may differ from actual product

Product No.: [98993050](#)

Multistage, immersible, self-priming, centrifugal pump for vertical installation in tanks etc.

The pump has the following characteristics:

- Installation length according to DIN 5440.
- Impellers, intermediate chambers and spline shaft are made of Stainless steel.
- Mechanical shaft seal according to EN 12756.

The pump is close-coupled with a 3-phase motor.

**Liquid:**

Pumped liquid: Water  
 Liquid temperature range: -10 .. 90 °C  
 Selected liquid temperature: 20 °C  
 Density at selected liquid temperature: 998.2 kg/m<sup>3</sup>

**Technical:**

Rated flow: 5 m<sup>3</sup>/h  
 Rated head: 31 m  
 Chambers: 5  
 Code for shaft seal: AQQV  
 Curve tolerance: ISO9906:2012 3B

**Materials:**

Pump housing: Cast iron  
 EN 1561 EN-GJL-200  
 ASTM A48-25B  
 Impeller: Stainless steel  
 EN 1.4301  
 AISI 304

**Installation:**

Maximum ambient temperature: 40 °C  
 Maximum operating pressure: 10 bar  
 Max pressure at stated temp: 10 bar / 90 °C  
 Type of connection: Rp  
 Size of outlet connection: 3/4 inch  
 Immersion depth: 226 mm

**Electrical data:**

Motor standard: IEC  
 Frame size: 80  
 Multi plug: No  
 IE efficiency class: IE3



Company name:

Created by:

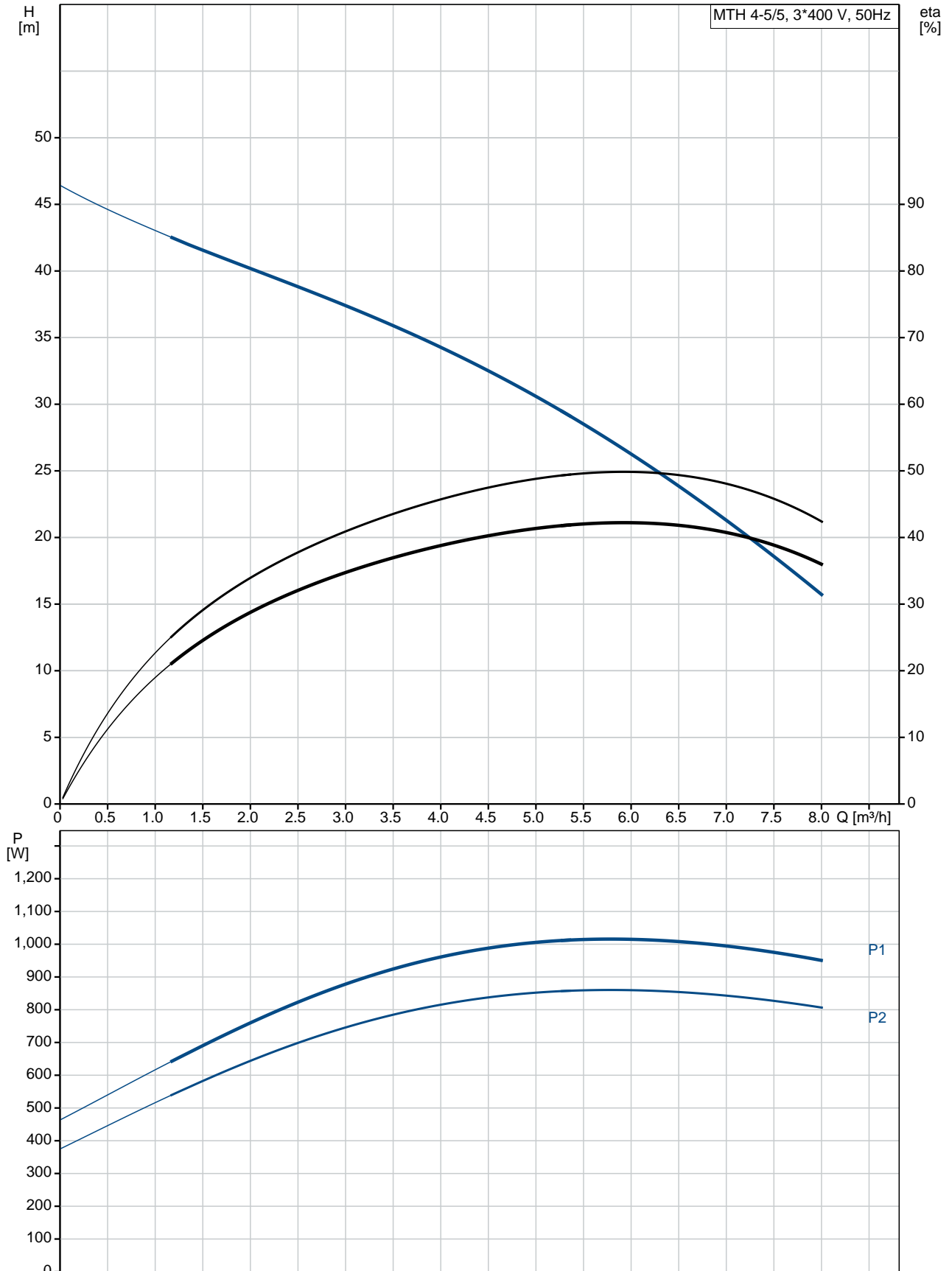
Phone:

Date:

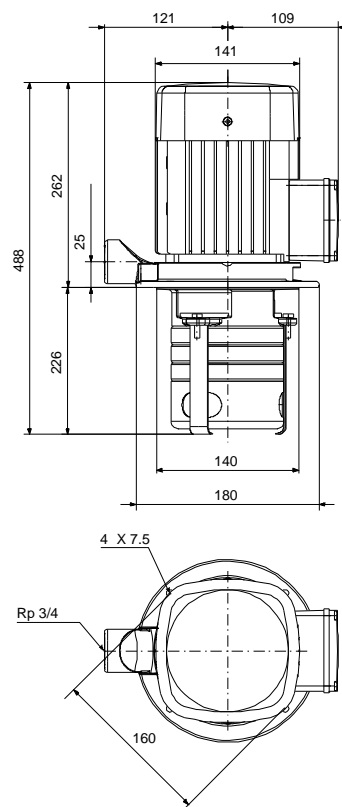
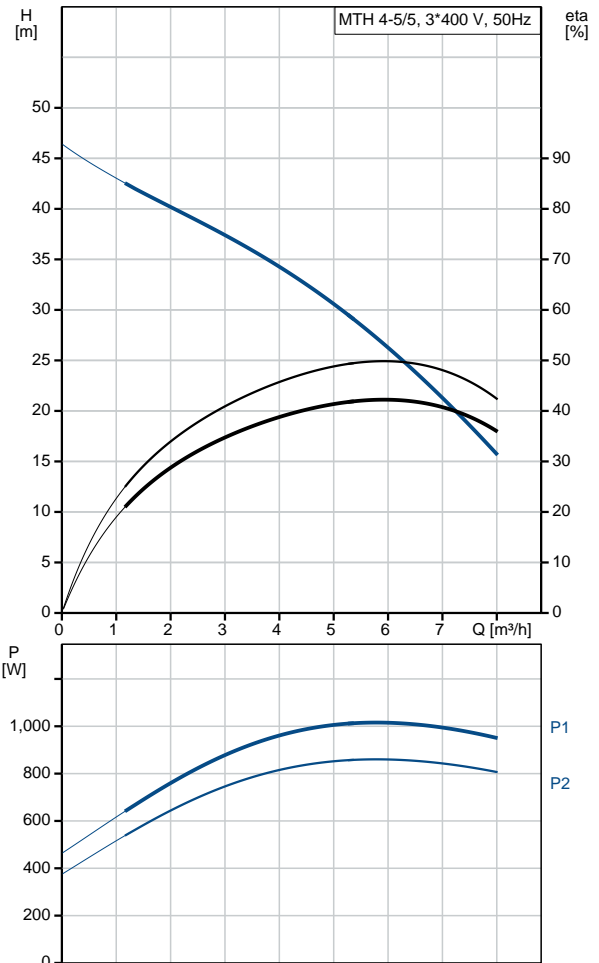
15/10/2019

| Qty. | Description                          |
|------|--------------------------------------|
|      | Rated power - P2: 1.1 kW             |
|      | Mains frequency: 50 Hz               |
|      | Phases: 3                            |
|      | Rated voltage: 220-240D/380-415Y V   |
|      | Service factor: 1.30                 |
|      | Rated current: 4.35/2.55 A           |
|      | Starting current: 450-500 %          |
|      | Rated speed: 2855 rpm                |
|      | Enclosure class (IEC 34-5): IP54     |
|      | Insulation class (IEC 85): F         |
|      | Built-in motor protection: NONE      |
|      | <b>Others:</b>                       |
|      | Terminal box position: 6             |
|      | Minimum efficiency index, MEI : 0.70 |
|      | Net weight: 15 kg                    |
|      | Gross weight: 16.1 kg                |
|      | Country of origin: HU                |
|      | Custom tariff no.: 84137075          |

## 98993050 MTH 4-5/5 A-W-A-AQQV 50 Hz



| Description                             | Value                   |
|---|-------------------------|
| <b>General information:</b>             |                         |
| Product name:                           | MTH 4-5/5 A-W-A-AQQV    |
| Product No:                             | 98993050                |
| EAN number:                             | 5712604838969           |
|   | 5712604838969           |
| Price:                                  | 752,00 GBP              |
| <b>Technical:</b>                       |                         |
| Rated flow:                             | 5 m <sup>3</sup> /h     |
| Rated head:                             | 31 m                    |
| Chambers:                               | 5                       |
| Impellers:                              | 5                       |
| Number of reduced-diameter impellers:   | 0                       |
| Code for shaft seal:                    | AQQV                    |
| Curve tolerance:                        | ISO9906:2012 3B         |
| Pump version:                           | A                       |
| <b>Materials:</b>                       |                         |
| Pump housing:                           | Cast iron               |
|   | EN 1561 EN-GJL-200      |
|   | ASTM A48-25B            |
| Impeller:                               | Stainless steel         |
|   | EN 1.4301               |
|   | AISI 304                |
| Material code:                          | A                       |
| <b>Installation:</b>                    |                         |
| Maximum ambient temperature:            | 40 °C                   |
| Maximum operating pressure:             | 10 bar                  |
| Max pressure at stated temp:            | 10 bar / 90 °C          |
| Type of connection:                     | Rp                      |
| Size of outlet connection:              | 3/4 inch                |
| Immersion depth:                        | 226 mm                  |
| Connect code:                           | W                       |
| <b>Liquid:</b>                          |                         |
| Pumped liquid:                          | Water                   |
| Liquid temperature range:               | -10 .. 90 °C            |
| Selected liquid temperature:            | 20 °C                   |
| Density at selected liquid temperature: | 998.2 kg/m <sup>3</sup> |
| <b>Electrical data:</b>                 |                         |
| Motor standard:                         | IEC                     |
| Frame size:                             | 80                      |
| Multi plug:                             | No                      |
| IE efficiency class:                    | IE3                     |
| Rated power - P2:                       | 1.1 kW                  |
| Mains frequency:                        | 50 Hz                   |
| Phases:                                 | 3                       |
| Rated voltage:                          | 220-240D/380-415Y V     |
| Service factor:                         | 1.30                    |
| Rated current:                          | 4.35/2.55 A             |
| Starting current:                       | 450-500 %               |
| Rated speed:                            | 2855 rpm                |
| Enclosure class (IEC 34-5):             | IP54                    |
| Insulation class (IEC 85):              | F                       |
| Built-in motor protection:              | NONE                    |
| <b>Others:</b>                          |                         |
| Terminal box position:                  | 6                       |
| Minimum efficiency index, MEI :         | 0.70                    |
| Net weight:                             | 15 kg                   |
| Gross weight:                           | 16.1 kg                 |
| Country of origin:                      | HU                      |





Company name:

Created by:

Phone:

Date:

15/10/2019

**Description**

**Value**

Custom tariff no.:

84137075

## 98993050 MTH 4-5/5 A-W-A-AQQV 50 Hz

