
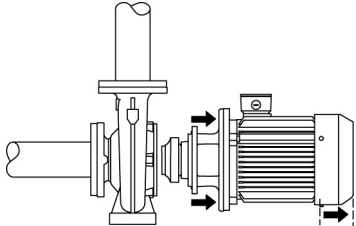
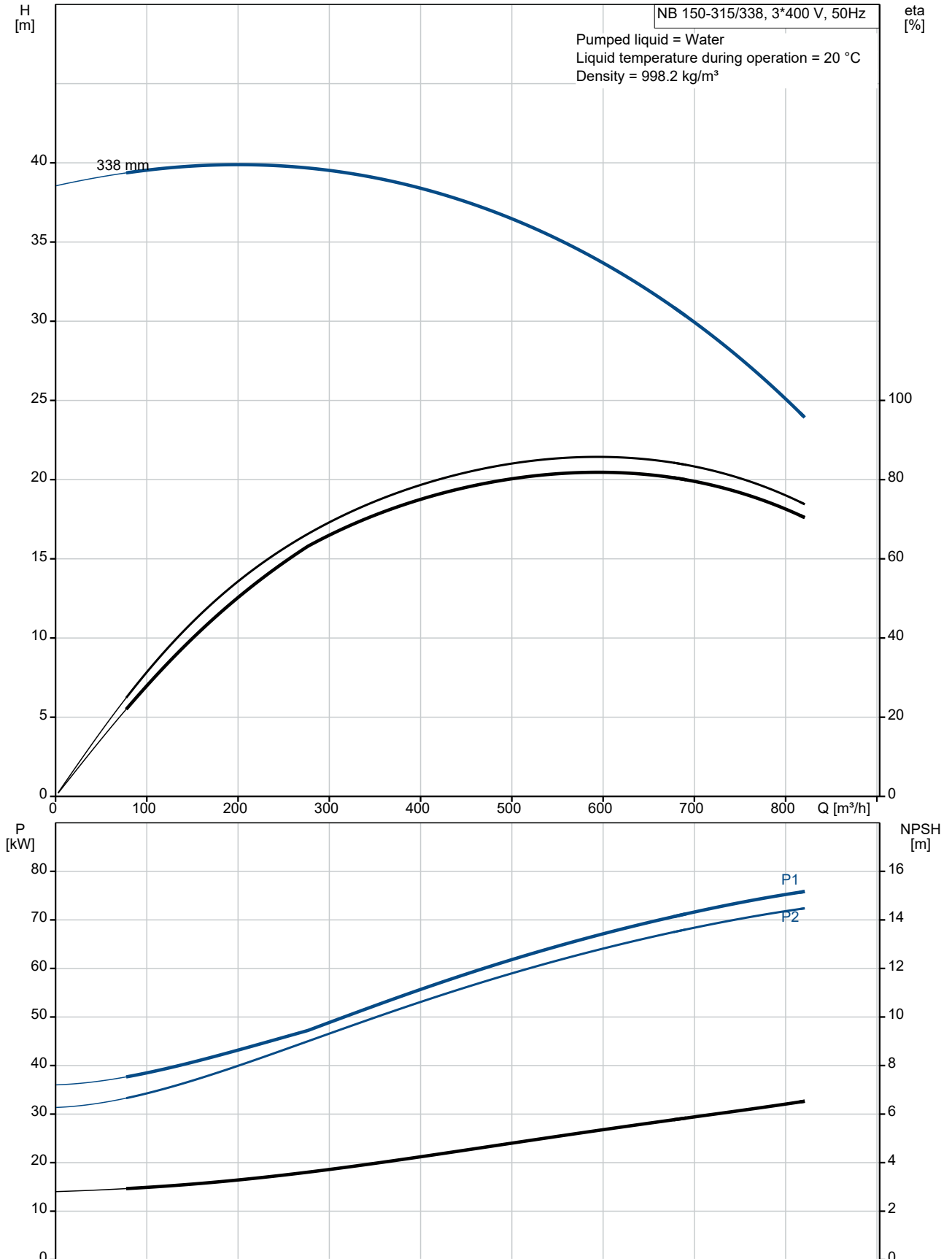


Qty.	Description
1	<p data-bbox="199 338 523 365">NB 150-315/338 AF1ABQQE</p>  <p data-bbox="199 658 464 685">Product No.: 98974752</p> <p data-bbox="199 719 1426 770">Non-self-priming, single-stage, centrifugal volute pump designed according to ISO 5199 with dimensions and rated performance according to EN 733 (10 bar).</p> <p data-bbox="199 777 1417 851">Flanges are PN 10 with dimensions according to EN 1092-2. The pump has an axial suction port, radial discharge port, horizontal shaft and a back pull-out design enabling removal of the motor, motor stool, cover and impeller without disturbing the pump housing or pipework.</p> <p data-bbox="199 862 922 889">The unbalanced rubber bellows seal is according to DIN EN 12756.</p> <p data-bbox="199 891 890 918">The pump is close-coupled to a fan-cooled asynchronous motor.</p> <p data-bbox="199 920 1380 972">The back pull-out design means that the pump can be serviced by a single person without disturbing the pump housing or pipes.</p>  <p data-bbox="199 1234 1455 1308">Cast-iron parts have an epoxy-based coating made in a cathodic electro-deposition (CED) process. CED is a high-quality dip-painting process where an electrical field around the products ensures deposition of paint particles as a thin, well-controlled layer on the surface.</p> <p data-bbox="199 1346 284 1373">Pump</p> <p data-bbox="199 1382 1433 1456">The pump housing has both a priming and a drain hole closed by plugs. The impeller is a closed impeller with double-curved blades with smooth surfaces. The impeller is statically balanced according to ISO 1940-1 class G6.3 and hydraulically balanced to compensate for axial thrust.</p> <p data-bbox="199 1467 1023 1494">Wear rings used in pump housing and for impeller are made of bronze/brass.</p> <p data-bbox="199 1496 1433 1547">Motor stool and pump cover are made of cast iron (EN-GJL-250). Coupling guards are fitted to the motor stool. The pump cover is provided with a manual air vent screw for venting of the pump housing and the shaft seal chamber.</p> <p data-bbox="199 1581 1455 1655">The pump is fitted with an unbalanced rubber bellows seal with torque transmission across the spring and around the bellows. Due to the bellows, the seal does not wear the shaft, and the axial movement is not prevented by deposits on the shaft.</p> <p data-bbox="199 1666 344 1693">Primary seal:</p> <ul data-bbox="240 1697 788 1756" style="list-style-type: none">• Rotating seal ring material: silicon carbide (SiC)• Stationary seat material: silicon carbide (SiC) <p data-bbox="199 1760 1449 1812">This material pairing is used where higher corrosion resistance is required. The high hardness of this material pairing offers good resistance against abrasive particles.</p> <p data-bbox="199 1816 850 1843">Secondary seal material: EPDM (ethylene-propylene rubber)</p> <p data-bbox="199 1845 1075 1872">EPDM has excellent resistance to hot water. EPDM is not suitable for mineral oils.</p> <p data-bbox="199 1874 504 1901">The pump housing has feet.</p> <p data-bbox="199 1935 284 1962">Motor</p> <p data-bbox="199 1971 1394 2022">The motor is a totally enclosed, fan-cooled motor with principal dimensions to IEC and DIN standards. Electrical tolerances comply with IEC 60034.</p> <p data-bbox="199 2027 1015 2054">The motor efficiency is classified as IE3 in accordance with IEC 60034-30-1.</p>

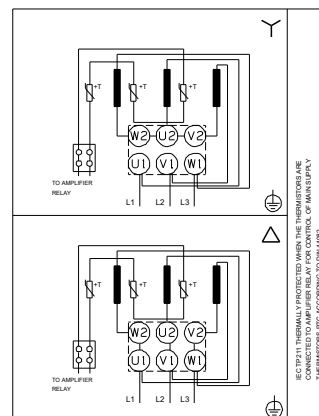
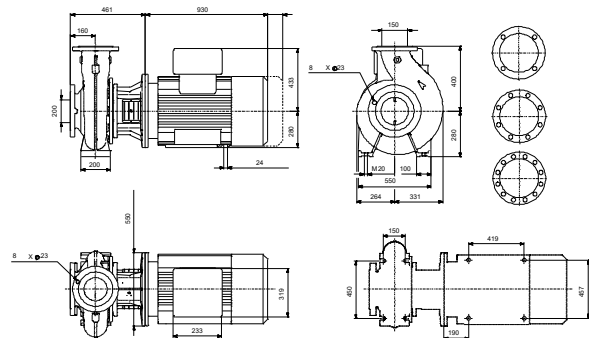
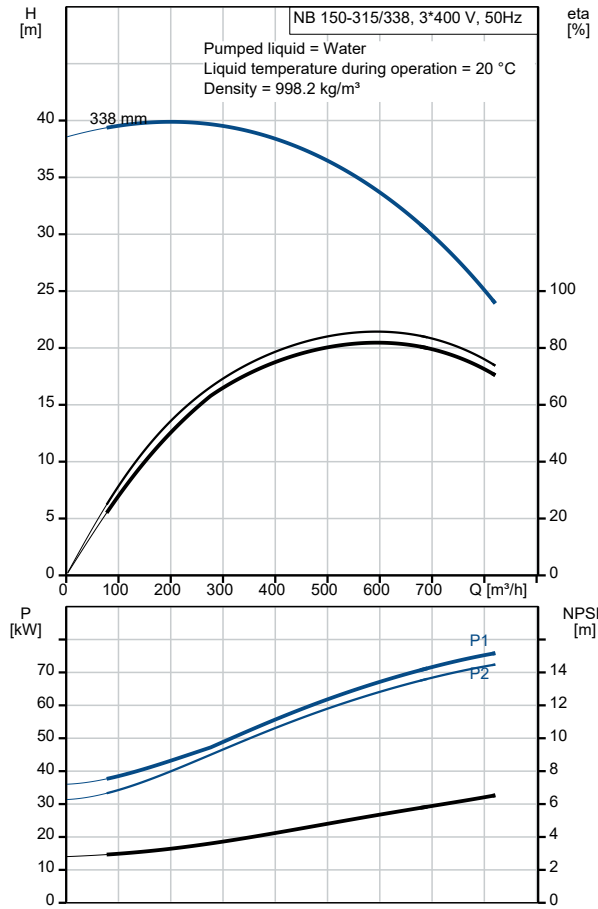
Qty.	Description
	<p>The motor has thermistors (PTC sensors) in the windings in accordance with DIN 44081/DIN 44082. The protection reacts to both slow- and quick-rising temperatures, e.g. constant overload and stalled conditions.</p> <p>Thermal switches must be connected to an external control circuit in a way which ensures that the automatic reset cannot cause accidents. The motors must be connected to a motor-protective circuit breaker according to local regulations.</p> <p>A variable speed drive makes adjustment of pump performance to any duty point possible. If the motor is to be connected to a variable speed drive, the pump must be ordered with an electrically insulated motor bearing.</p> <p>Further product details</p> <p>Technical data</p> <p>Controls:</p> <p>Frequency converter: NONE</p> <p>Pressure sensor: N</p> <p>Liquid:</p> <p>Pumped liquid: Water</p> <p>Liquid temperature range: -25 .. 120 °C</p> <p>Selected liquid temperature: 20 °C</p> <p>Density: 998.2 kg/m³</p> <p>Technical:</p> <p>Pump speed on which pump data are based: 1485 rpm</p> <p>Rated flow: 593.2 m³/h</p> <p>Rated head: 33.67 m</p> <p>Actual impeller diameter: 338 mm</p> <p>Nominal impeller diameter: 315</p> <p>Shaft seal arrangement: Single</p> <p>Code for shaft seal: BQQE</p> <p>Curve tolerance: ISO9906:2012 3B</p> <p>Bearing design: Standard</p> <p>Materials:</p> <p>Pump housing: Cast iron EN-GJL-250 ASTM class 35</p> <p>Wear ring: Brass</p> <p>Impeller: Cast iron EN-GJL-200 ASTM class 30</p> <p>Shaft: Stainless steel EN 1.4301 AISI 304</p> <p>Internal pump house coating: CED</p> <p>Installation:</p> <p>Maximum ambient temperature: 55 °C</p> <p>Maximum operating pressure: 10 bar</p> <p>Pipe connection standard: EN 1092-2</p> <p>Size of inlet connection: DN 200</p> <p>Size of outlet connection: DN 150</p> <p>Pressure rating for connection: PN 10</p> <p>Bearing lubrication: Grease</p>

Qty.	Description																																																						
	<table> <tr> <td>Pump housing with feet:</td> <td>Yes</td> </tr> <tr> <td>Support block:</td> <td>N</td> </tr> <tr> <td colspan="2">Electrical data:</td> </tr> <tr> <td>Motor type:</td> <td>SIEMENS</td> </tr> <tr> <td>IE Efficiency class:</td> <td>IE3</td> </tr> <tr> <td>Rated power - P2:</td> <td>90 kW</td> </tr> <tr> <td>Mains frequency:</td> <td>50 Hz</td> </tr> <tr> <td>Rated voltage:</td> <td>3 x 380-420D/660-725Y V</td> </tr> <tr> <td>Rated current:</td> <td>166-152/95,0-88,0 A</td> </tr> <tr> <td>Starting current:</td> <td>720-720 %</td> </tr> <tr> <td>Cos phi - power factor:</td> <td>0.9</td> </tr> <tr> <td>Rated speed:</td> <td>1485 rpm</td> </tr> <tr> <td>Efficiency:</td> <td>IE3 95,2%</td> </tr> <tr> <td>Motor efficiency at full load:</td> <td>95.2-95.2 %</td> </tr> <tr> <td>Motor efficiency at 3/4 load:</td> <td>95.5-95.5 %</td> </tr> <tr> <td>Motor efficiency at 1/2 load:</td> <td>95.3-95.3 %</td> </tr> <tr> <td>Number of poles:</td> <td>4</td> </tr> <tr> <td>Enclosure class (IEC 34-5):</td> <td>IP55</td> </tr> <tr> <td>Insulation class (IEC 85):</td> <td>F</td> </tr> <tr> <td>Motor No:</td> <td>83V15442</td> </tr> <tr> <td colspan="2">Others:</td> </tr> <tr> <td>Minimum efficiency index, MEI ≥:</td> <td>0.54</td> </tr> <tr> <td>Net weight:</td> <td>924 kg</td> </tr> <tr> <td>Gross weight:</td> <td>950 kg</td> </tr> <tr> <td>Shipping volume:</td> <td>0.848 m³</td> </tr> <tr> <td>Country of origin:</td> <td>HU</td> </tr> <tr> <td>Custom tariff no.:</td> <td>84137051</td> </tr> </table>	Pump housing with feet:	Yes	Support block:	N	Electrical data:		Motor type:	SIEMENS	IE Efficiency class:	IE3	Rated power - P2:	90 kW	Mains frequency:	50 Hz	Rated voltage:	3 x 380-420D/660-725Y V	Rated current:	166-152/95,0-88,0 A	Starting current:	720-720 %	Cos phi - power factor:	0.9	Rated speed:	1485 rpm	Efficiency:	IE3 95,2%	Motor efficiency at full load:	95.2-95.2 %	Motor efficiency at 3/4 load:	95.5-95.5 %	Motor efficiency at 1/2 load:	95.3-95.3 %	Number of poles:	4	Enclosure class (IEC 34-5):	IP55	Insulation class (IEC 85):	F	Motor No:	83V15442	Others:		Minimum efficiency index, MEI ≥:	0.54	Net weight:	924 kg	Gross weight:	950 kg	Shipping volume:	0.848 m ³	Country of origin:	HU	Custom tariff no.:	84137051
Pump housing with feet:	Yes																																																						
Support block:	N																																																						
Electrical data:																																																							
Motor type:	SIEMENS																																																						
IE Efficiency class:	IE3																																																						
Rated power - P2:	90 kW																																																						
Mains frequency:	50 Hz																																																						
Rated voltage:	3 x 380-420D/660-725Y V																																																						
Rated current:	166-152/95,0-88,0 A																																																						
Starting current:	720-720 %																																																						
Cos phi - power factor:	0.9																																																						
Rated speed:	1485 rpm																																																						
Efficiency:	IE3 95,2%																																																						
Motor efficiency at full load:	95.2-95.2 %																																																						
Motor efficiency at 3/4 load:	95.5-95.5 %																																																						
Motor efficiency at 1/2 load:	95.3-95.3 %																																																						
Number of poles:	4																																																						
Enclosure class (IEC 34-5):	IP55																																																						
Insulation class (IEC 85):	F																																																						
Motor No:	83V15442																																																						
Others:																																																							
Minimum efficiency index, MEI ≥:	0.54																																																						
Net weight:	924 kg																																																						
Gross weight:	950 kg																																																						
Shipping volume:	0.848 m ³																																																						
Country of origin:	HU																																																						
Custom tariff no.:	84137051																																																						

98974752 NB 150-315/338 AF1ABQQE 50 Hz



Description	Value
General information:	
Product name:	NB 150-315/338 AF1ABQQE
Product No:	98974752
EAN number:	5712604530009
Technical:	
Pump speed on which pump data are based:	1485 rpm
Rated flow:	593.2 m ³ /h
Rated head:	33.67 m
Actual impeller diameter:	338 mm
Nominal impeller diameter:	315
Shaft seal arrangement:	Single
Shaft diameter:	42 mm
Code for shaft seal:	BQQE
Curve tolerance:	ISO9906:2012 3B
Pump version:	A
Bearing design:	Standard
Materials:	
Pump housing:	Cast iron
Pump housing:	EN-GJL-250
Pump housing:	ASTM class 35
Wear ring:	Brass
Impeller:	Cast iron
Impeller:	EN-GJL-200
Impeller:	ASTM class 30
Shaft:	Stainless steel
Shaft:	EN 1.4301
Shaft:	AISI 304
Internal pump house coating:	CED
Material code:	A
Code for rubber:	E
Installation:	
Maximum ambient temperature:	55 °C
Maximum operating pressure:	10 bar
Pipe connection standard:	EN 1092-2
Size of inlet connection:	DN 200
Size of outlet connection:	DN 150
Pressure rating for connection:	PN 10
Bearing lubrication:	Grease
Pump housing with feet:	Yes
Support block:	N
Connect code:	F1
Liquid:	
Pumped liquid:	Water
Liquid temperature range:	-25 .. 120 °C
Selected liquid temperature:	20 °C
Density:	998.2 kg/m ³
Electrical data:	
Motor type:	SIEMENS
IE Efficiency class:	IE3
Rated power - P2:	90 kW
Mains frequency:	50 Hz
Rated voltage:	3 x 380-420D/660-725Y V
Rated current:	166-152/95,0-88,0 A
Starting current:	720-720 %
Cos phi - power factor:	0.9
Rated speed:	1485 rpm





Company name:

Created by:

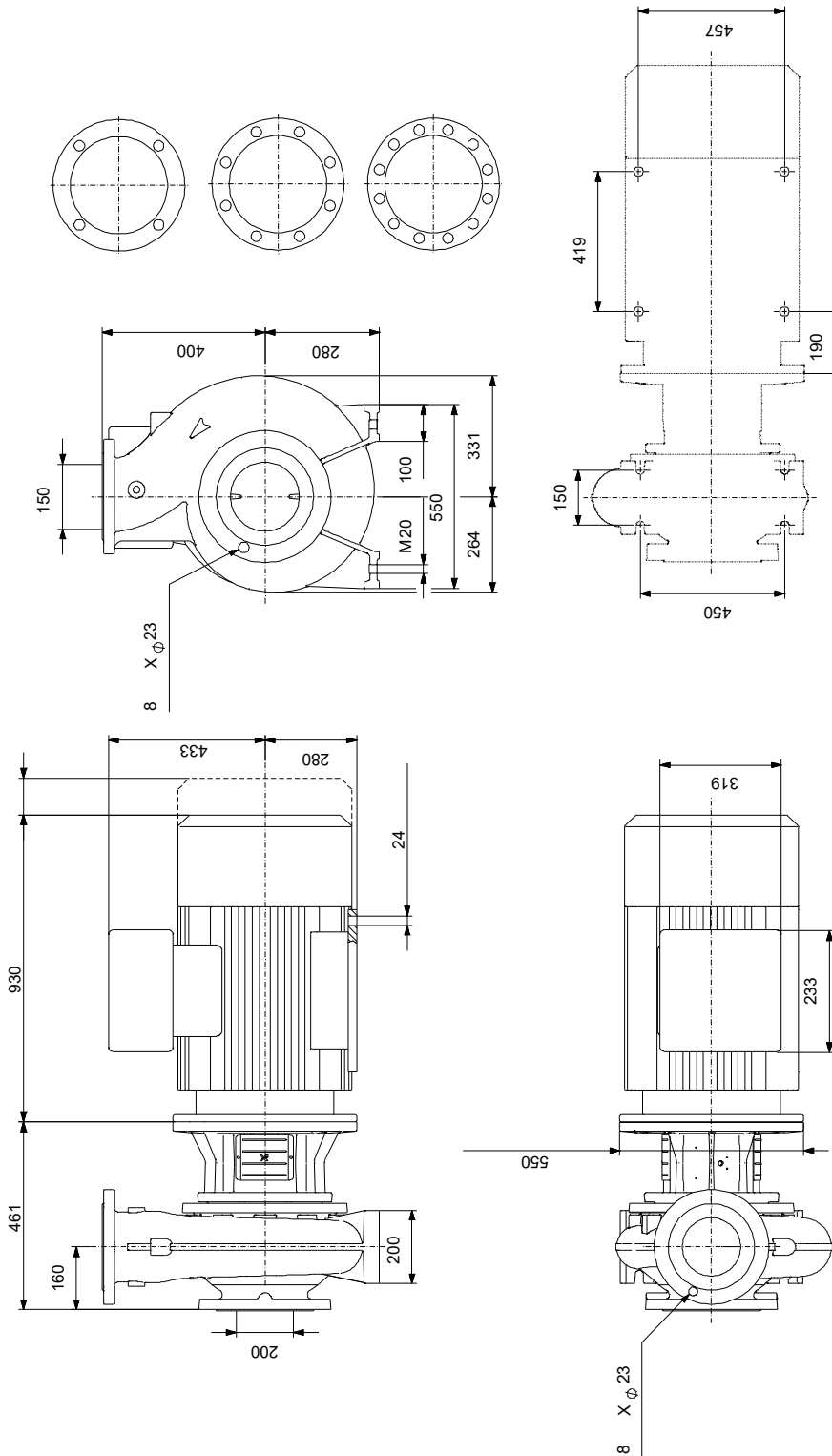
Phone:

Date:

12/08/2021

Description	Value
Efficiency:	IE3 95,2%
Motor efficiency at full load:	95.2-95.2 %
Motor efficiency at 3/4 load:	95.5-95.5 %
Motor efficiency at 1/2 load:	95.3-95.3 %
Number of poles:	4
Enclosure class (IEC 34-5):	IP55
Insulation class (IEC 85):	F
Motor protec:	PTC
Motor No:	83V15442
Mount. design. acc. IEC 34-7:	IM B35
Controls:	
Frequency converter:	NONE
Pressure sensor:	N
Others:	
Minimum efficiency index, MEI ≥:	0.54
Net weight:	924 kg
Gross weight:	950 kg
Shipping volume:	0.848 m ³
Country of origin:	HU
Custom tariff no.:	84137051

98974752 NB 150-315/338 AF1ABQQE 50 Hz



Note! All units are in [mm] unless others are stated.
 Disclaimer: This simplified dimensional drawing does not show all details.

98974752 NB 150-315/338 AF1ABQQE 50 Hz



Note! All units are in [mm] unless others are stated.