
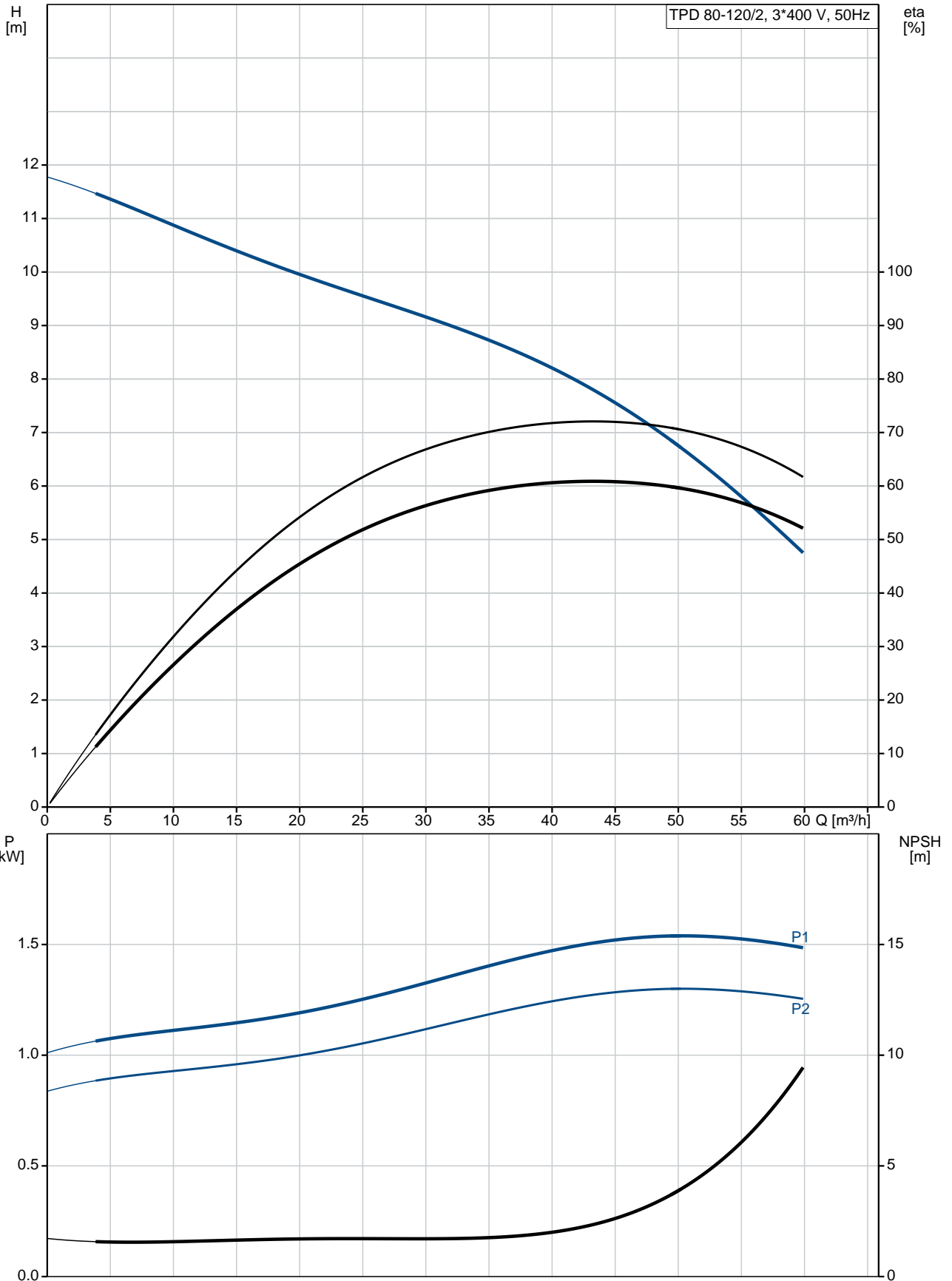


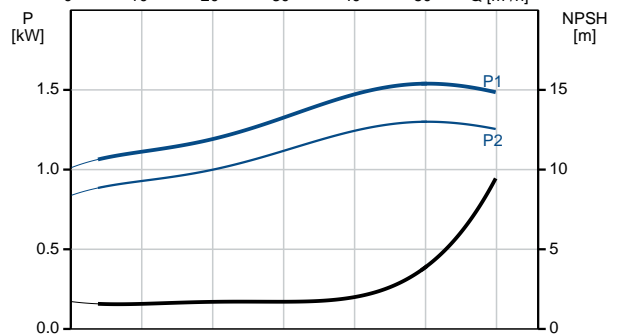
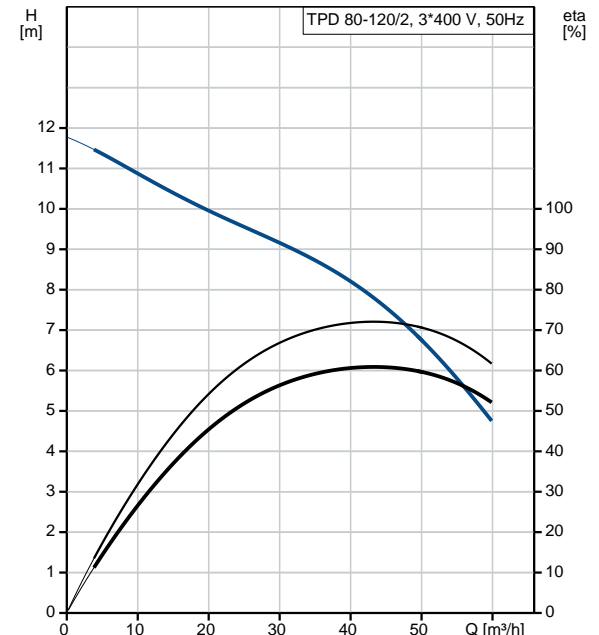
| Position | Qty. | Description   |
|----------|------|---|
|          | 1    | <p><b>TPD 80-120/2 AI-F-A-BQQE</b></p>  <p>Product No.: <a href="#">98958039</a></p> <p>Single-stage, close-coupled, volute twin-head pump with in-line suction and discharge ports of identical diameter. The twin-head pump is designed with two parallel power-heads. The pump is of the top-pull-out design, i.e. the power head (motor, pump head and impeller) can be removed for maintenance or service while the pump housing remains in the pipework.</p> <p>Each power head is fitted with an unbalanced rubber bellows seal. The shaft seal is according to EN 12756. Pipework connection is via PN 6 DIN flanges (EN 1092-2 and ISO 7005-2).</p> <p>Each power head is fitted with a fan-cooled asynchronous motor of identical size.</p> <p><b>Liquid:</b></p> <p>Pumped liquid: Water<br/>           Liquid temperature range: -25 .. 120 °C<br/>           Liquid temperature during operation: 20 °C<br/>           Density: 998.2 kg/m<sup>3</sup></p> <p><b>Technical:</b></p> <p>Rated flow: 42.5 m<sup>3</sup>/h<br/>           Rated head: 7.91 m<br/>           Actual impeller diameter: 95 mm<br/>           Primary shaft seal: BQQE<br/>           Curve tolerance: ISO9906:2012 3B</p> <p><b>Materials:</b></p> <p>Pump housing: Cast iron<br/>           EN-JL1040<br/>           ASTM A48-40 B</p> <p>Impeller: Stainless steel<br/>           DIN W.-Nr. 1.4301<br/>           AISI 304</p> <p><b>Installation:</b></p> <p>Range of ambient temperature: -30 .. 60 °C<br/>           Maximum operating pressure: 6 bar<br/>           Flange standard: DIN<br/>           Pipe connection: DN 80<br/>           Pump inlet: DN 80<br/>           Pump outlet: DN 80<br/>           Pressure rating: PN 6<br/>           (@): 360 mm<br/>           Flange size for motor: FT115</p> <p><b>Electrical data:</b></p> <p>Motor type: 90SB<br/>           IE Efficiency class: IE3<br/>           Rated power - P2: 2 x 1.5 kW<br/>           Mains frequency: 50 Hz<br/>           Rated voltage: 3 x 220-240D/380-415Y V</p> |

| Position | Qty. | Description  |
|----------|------|--|
|          |      | <p>Rated current: 5.45/3.15 A</p> <p>Starting current: 850-930 %</p> <p>Cos phi - power factor: 0.87-0.82</p> <p>Rated speed: 2890-2910 rpm</p> <p>Efficiency: IE3 84,2%</p> <p>Motor efficiency at full load: 84.2 %</p> <p>Motor efficiency at 3/4 load: 84.5 %</p> <p>Motor efficiency at 1/2 load: 83.1 %</p> <p>Number of poles: 2</p> <p>Enclosure class (IEC 34-5): 55 Dust/Jetting</p> <p>Insulation class (IEC 85): F</p> <p><b>Others:</b></p> <p>Minimum efficiency index, MEI : 0.70</p> <p>ErP status: EuP Standalone/Prod.</p> <p>Net weight: 94.8 kg</p> <p>Gross weight: 109 kg</p> <p>Shipping volume: 0.39 m<sup>3</sup></p> <p>Country of origin: HU</p> <p>Custom tariff no.: 84137065</p> |

## 98958039 TPD 80-120/2 AI-F-A-BQQE 50 Hz



| Description                          | Value  |
|--------------------------------------|--|
| <b>General information:</b>          |  |
| Product name:                        | TPD 80-120/2 AI-F-A-BQQE                         |
| Product No:                          | <a href="#">98958039</a>                         |
| EAN number:                          | 5712604245064                                    |
| Price:                               | 3.647,00 GBP                                     |
| <b>Technical:</b>                    |  |
| Rated flow:                          | 42.5 m³/h  |
| Rated head:                          | 7.91 m   |
| Head max:                            | 120 dm   |
| Actual impeller diameter:            | 95 mm  |
| Primary shaft seal:                  | BQQE   |
| Curve tolerance:                     | ISO9906:2012 3B                                  |
| Pump version:                        | AI   |
| Model:                               | A  |
| <b>Materials:</b>                    |  |
| Pump housing:                        | Cast iron<br>EN-JL1040                           |
|                                      | ASTM A48-40 B                                    |
| Impeller:                            | Stainless steel<br>DIN W.-Nr. 1.4301<br>AISI 304 |
| Material code:                       | A  |
| <b>Installation:</b>                 |  |
| Range of ambient temperature:        | -30 .. 60 °C                                     |
| Maximum operating pressure:          | 6 bar  |
| Flange standard:                     | DIN  |
| Pipe connection:                     | DN 80  |
| Pump inlet:                          | DN 80  |
| Pump outlet:                         | DN 80  |
| Pressure rating:                     | PN 6   |
| (@)                                  | 360 mm   |
| Flange size for motor:               | FT115  |
| Connect code:                        | F  |
| <b>Liquid:</b>                       |  |
| Pumped liquid:                       | Water  |
| Liquid temperature range:            | -25 .. 120 °C                                    |
| Liquid temperature during operation: | 20 °C  |
| Density:                             | 998.2 kg/m³                                      |
| <b>Electrical data:</b>              |  |
| Motor type:                          | 90SB   |
| IE Efficiency class:                 | IE3  |
| Rated power - P2:                    | 2 x 1.5 kW                                       |
| Mains frequency:                     | 50 Hz  |
| Rated voltage:                       | 3 x 220-240D/380-415Y V                          |
| Rated current:                       | 5.45/3.15 A                                      |
| Starting current:                    | 850-930 %  |
| Cos phi - power factor:              | 0.87-0.82  |
| Rated speed:                         | 2890-2910 rpm                                    |
| Efficiency:                          | IE3 84,2%  |
| Motor efficiency at full load:       | 84.2 %   |
| Motor efficiency at 3/4 load:        | 84.5 %   |
| Motor efficiency at 1/2 load:        | 83.1 %   |
| Number of poles:                     | 2  |
| Enclosure class (IEC 34-5):          | 55 Dust/Jetting                                  |
| Insulation class (IEC 85):           | F  |
| Motor protec:                        | NONE   |
| Motor No:                            | 85U05906   |
| <b>Others:</b>                       |  |





Company name:

Created by:

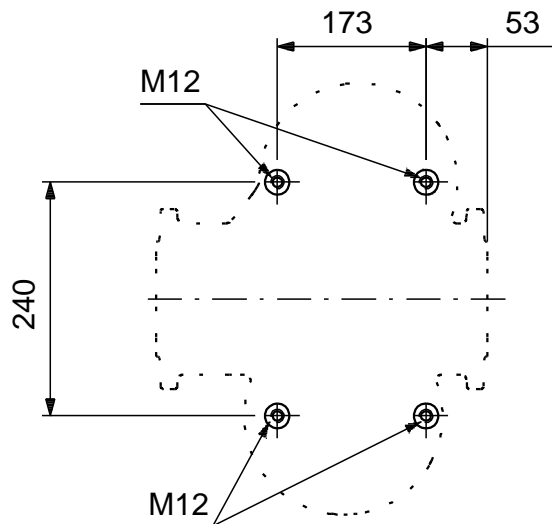
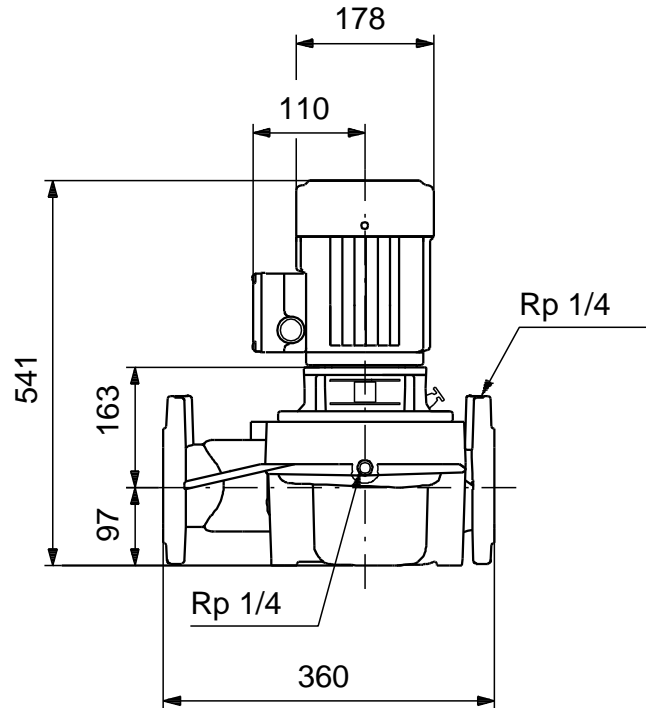
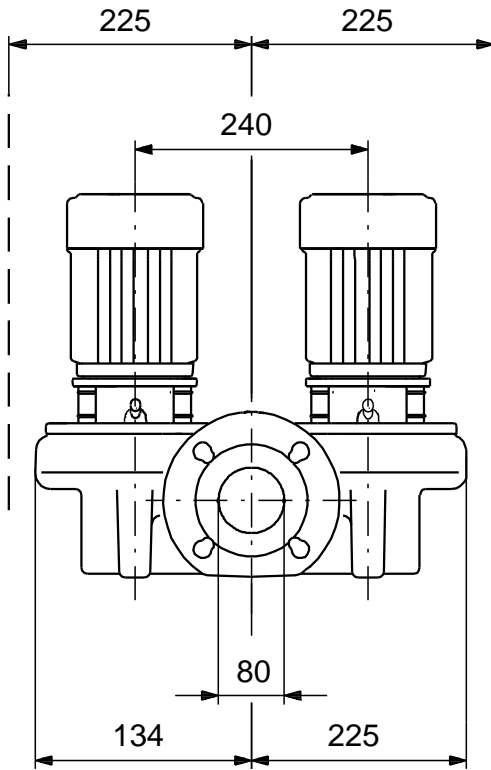
Phone:

Date:

11/10/2018

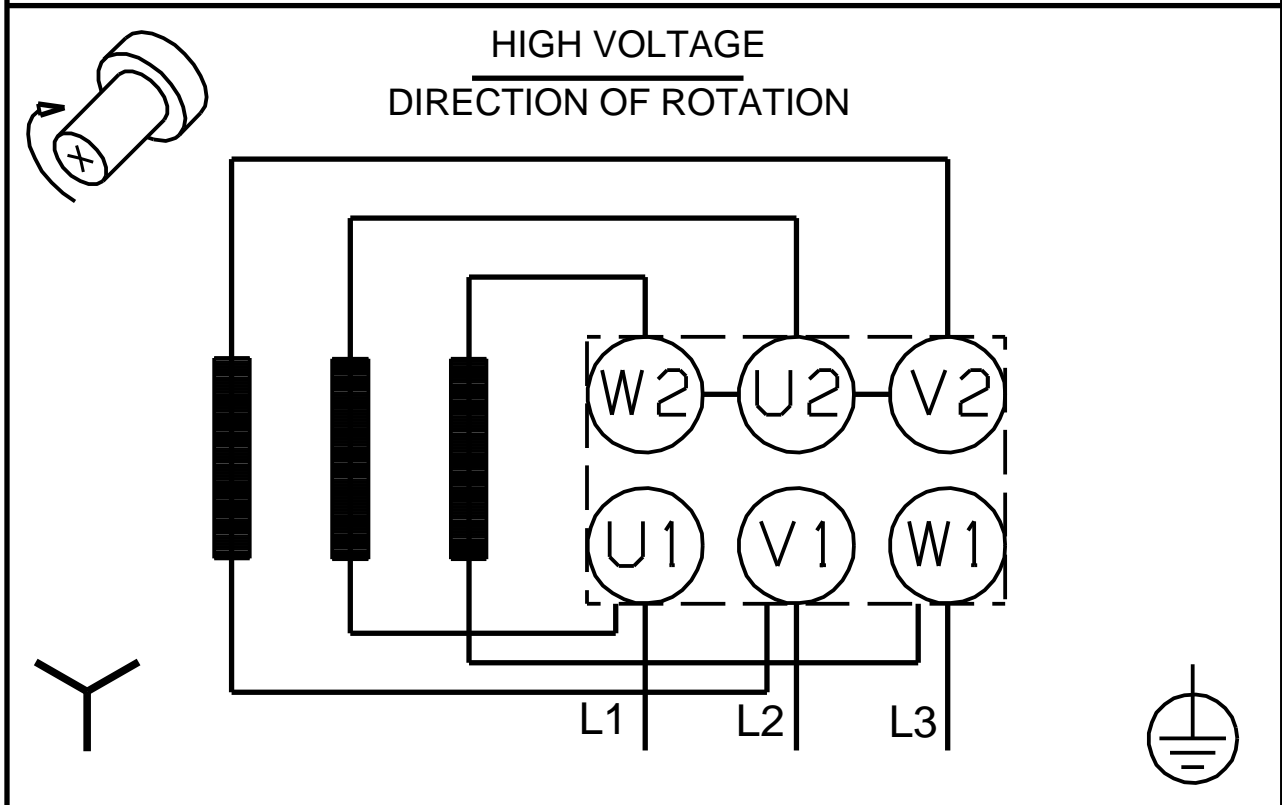
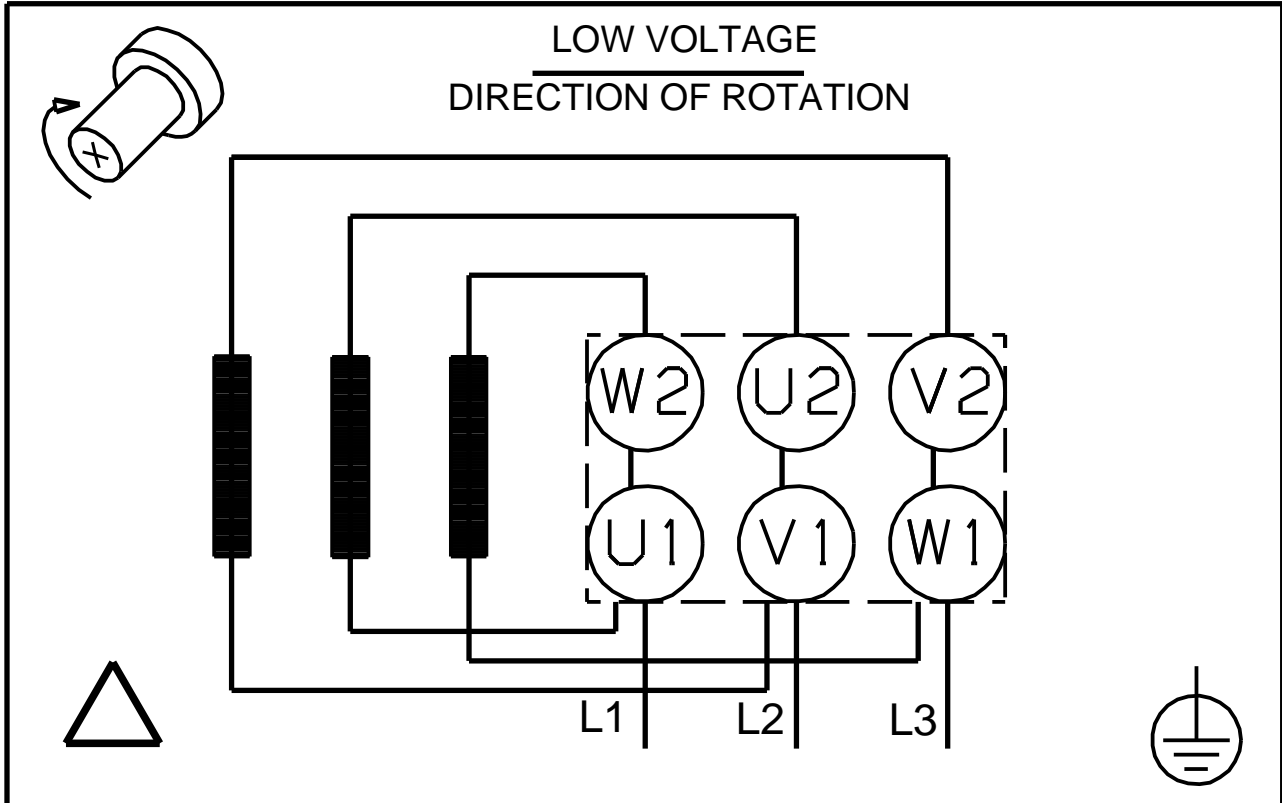
| Description                     | Value                |
|---------------------------------|----------------------|
| Minimum efficiency index, MEI : | 0.70                 |
| ErP status:                     | EuP Standalone/Prod. |
| Net weight:                     | 94.8 kg              |
| Gross weight:                   | 109 kg               |
| Shipping volume:                | 0.39 m <sup>3</sup>  |
| Country of origin:              | HU                   |
| Custom tariff no.:              | 84137065             |

## 98958039 TPD 80-120/2 AI-F-A-BQQE 50 Hz



Note! All units are in [mm] unless others are stated.  
Disclaimer: This simplified dimensional drawing does not show all details.

**98958039 TPD 80-120/2 AI-F-A-BQQE 50 Hz**



Note! All units are in [mm] unless others are stated.