
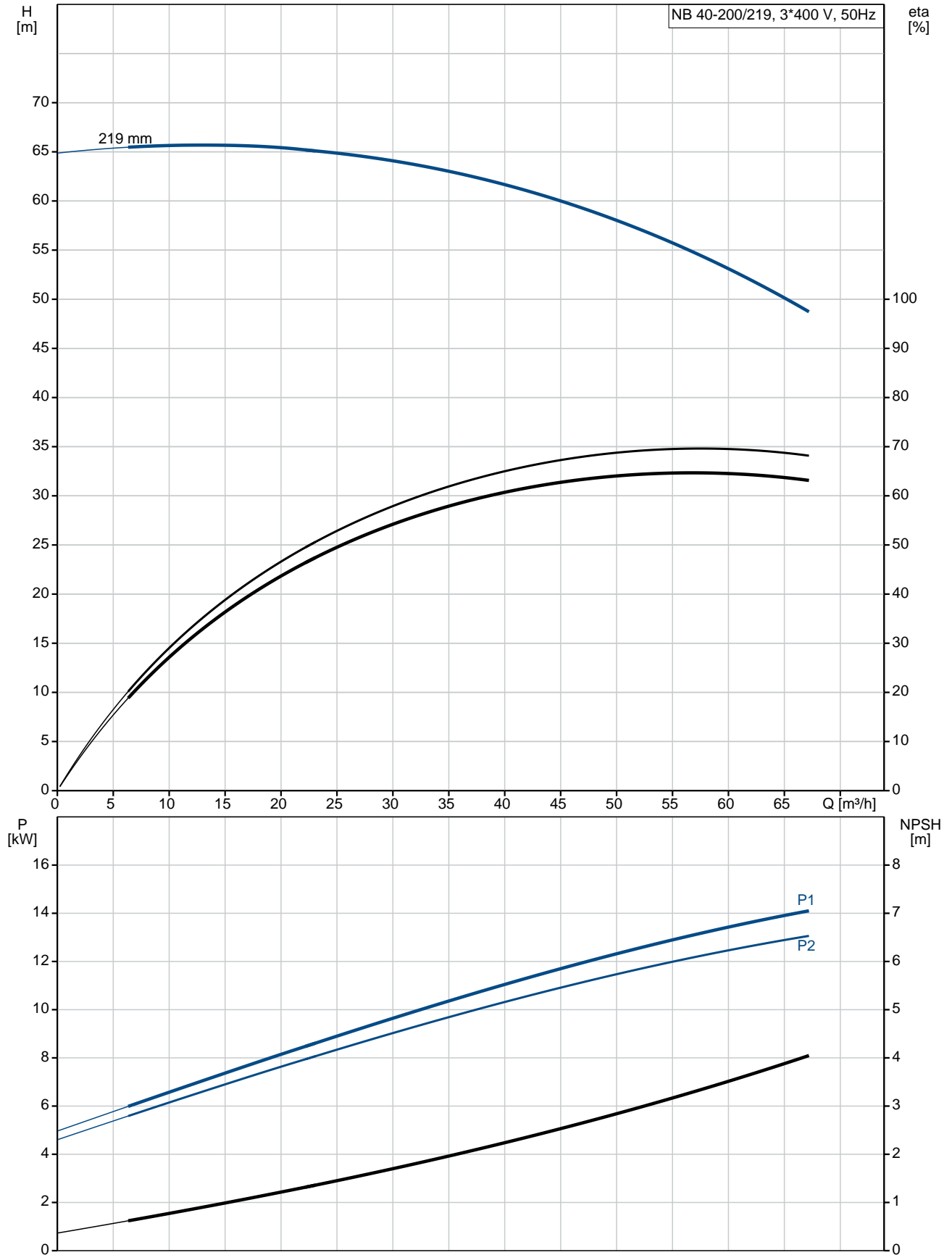


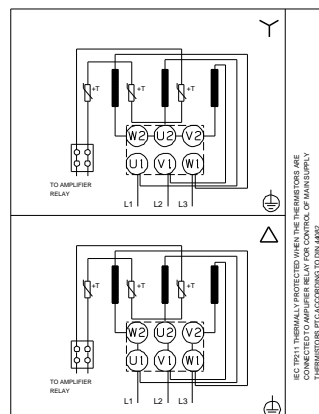
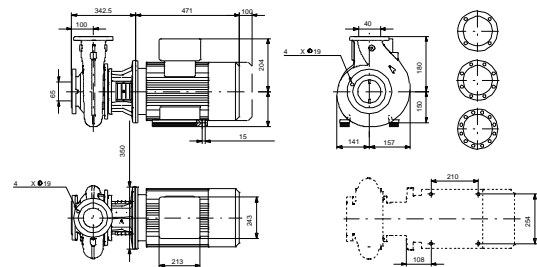
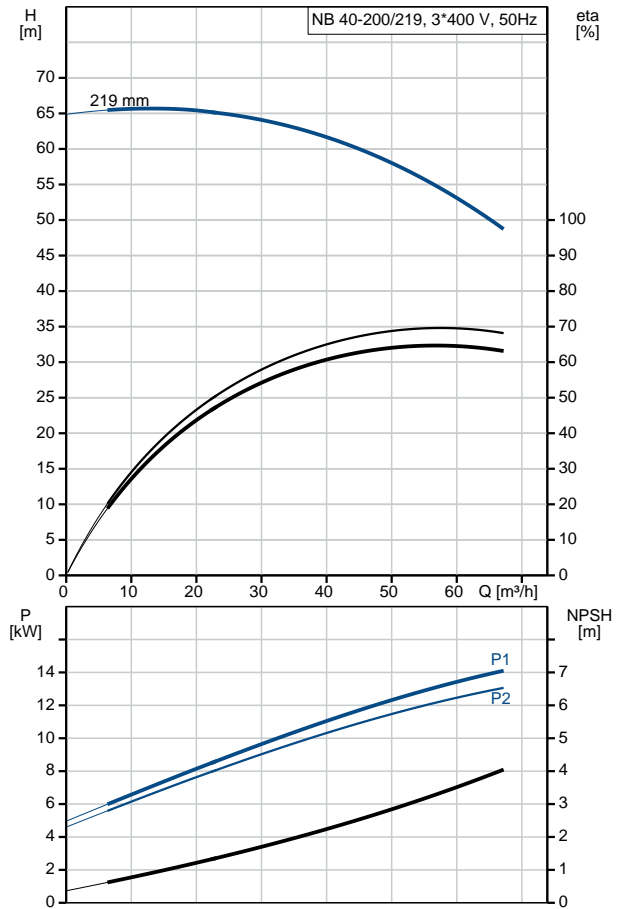
Qty.	Description
1	<p data-bbox="199 342 534 365"><b>NB 40-200/219 ASF2ABQQE</b></p> <div data-bbox="215 403 566 638">  </div> <p data-bbox="590 631 1077 654" style="text-align: center;"><b>Note! Product picture may differ from actual product</b></p> <p data-bbox="199 663 470 685">Product No.: <a href="#">98915632</a></p> <p data-bbox="199 719 1460 775">Non-self-priming, single-stage, centrifugal volute pump designed according to ISO 5199 with dimensions and rated performance according to EN 733 (10 bar).</p> <p data-bbox="199 808 1460 887">Flanges are PN 16 with dimensions according to EN 1092-2. The pump has an axial suction port, radial discharge port, horizontal shaft and a back pull-out design enabling removal of the motor, motor stool, cover and impeller without disturbing the pump housing or pipework.</p> <p data-bbox="199 898 941 920">The unbalanced rubber bellows seal is according to DIN EN 12756.</p> <p data-bbox="199 925 901 947">The pump is close-coupled to a fan-cooled asynchronous motor.</p> <p data-bbox="199 981 311 1003"><b>Controls:</b></p> <p data-bbox="199 1014 638 1037">Frequency converter: NONE</p> <p data-bbox="199 1070 287 1093"><b>Liquid:</b></p> <p data-bbox="199 1104 638 1126">Pumped liquid: Water</p> <p data-bbox="199 1137 710 1160">Liquid temperature range: -25 .. 120 °C</p> <p data-bbox="199 1171 686 1193">Liquid temperature during operation: 20 °C</p> <p data-bbox="199 1205 702 1227">Density: 998.2 kg/m<sup>3</sup></p> <p data-bbox="199 1261 327 1283"><b>Technical:</b></p> <p data-bbox="199 1294 678 1317">Rated flow: 60.1 m<sup>3</sup>/h</p> <p data-bbox="199 1328 662 1350">Rated head: 51.86 m</p> <p data-bbox="199 1361 662 1384">Actual impeller diameter: 219 mm</p> <p data-bbox="199 1395 662 1417">Nominal impeller diameter: 200 mm</p> <p data-bbox="199 1429 638 1451">Shaft seal arrangement: Single</p> <p data-bbox="199 1462 638 1485">Code for shaft seal: BQQE</p> <p data-bbox="199 1496 766 1518">Curve tolerance: ISO9906:2012 3B</p> <p data-bbox="199 1552 319 1574"><b>Materials:</b></p> <p data-bbox="199 1585 734 1641">Pump housing: Cast iron EN-GJL-250 ASTM class 35</p> <p data-bbox="199 1653 638 1675">Wear ring: Brass</p> <p data-bbox="199 1686 734 1753">Impeller: Cast iron EN-GJL-200 ASTM class 30</p> <p data-bbox="199 1765 734 1843">Shaft: Stainless steel EN 1.4301 AISI 304</p> <p data-bbox="199 1877 343 1899"><b>Installation:</b></p> <p data-bbox="199 1910 630 1933">Maximum ambient temperature: 60 °C</p> <p data-bbox="199 1944 638 1966">Maximum operating pressure: 16 bar</p> <p data-bbox="199 1977 686 2000">Pipe connection standard: EN 1092-2</p> <p data-bbox="199 2011 638 2033">Size of inlet connection: DN 65</p> <p data-bbox="199 2045 638 2067">Size of outlet connection: DN 40</p> <p data-bbox="199 2078 686 2101">Pressure rating for pipe connection: PN 16</p> <p data-bbox="199 2112 582 2134">Pump housing with feet: N</p>

Qty.	Description
	Support block: Y
	<b>Electrical data:</b>
	IE Efficiency class: IE3
	P2: 15 kW
	Mains frequency: 50 Hz
	Rated voltage: 3 x 380-415D/660-690Y V
	Rated current: 28,0-26,0/16,2-15,6 A
	Starting current: 660-780 %
	Cos phi - power factor: 0.89-0.87
	Rated speed: 2930-2950 rpm
	Efficiency: IE3 91,9%
	Motor efficiency at full load: 91.9 %
	Motor efficiency at 3/4 load: 92.4 %
	Motor efficiency at 1/2 load: 92.4 %
	Number of poles: 2
	Enclosure class (IEC 34-5): 55 Dust/Jetting
	Insulation class (IEC 85): F
	<b>Others:</b>
	Minimum efficiency index, MEI $\hat{\%}$ : 0.65
	Net weight: 158 kg
	Gross weight: 183 kg
	Shipping volume: 0.707 m <sup>3</sup>
	Country of origin: HU
	Custom tariff no.: 84137051

## 98915632 NB 40-200/219 ASF2ABQQE 50 Hz



Description	Value
<b>General information:</b>	
Product name:	NB 40-200/219 ASF2ABQQE
Product No:	98915632
EAN number:	5712603519500
Price:	3.447,00 GBP
<b>Technical:</b>	
Rated flow:	60.1 m <sup>3</sup> /h
Rated head:	51.86 m
Actual impeller diameter:	219 mm
Nominal impeller diameter:	200 mm
Shaft seal arrangement:	Single
Shaft diameter:	24 mm
Code for shaft seal:	BQQE
Curve tolerance:	ISO9906:2012 3B
Pump version:	AS
<b>Materials:</b>	
Pump housing:	Cast iron
	EN-GJL-250
	ASTM class 35
Wear ring:	Brass
Impeller:	Cast iron
	EN-GJL-200
	ASTM class 30
Shaft:	Stainless steel
	EN 1.4301
	AISI 304
Material code:	A
<b>Installation:</b>	
Maximum ambient temperature:	60 °C
Maximum operating pressure:	16 bar
Pipe connection standard:	EN 1092-2
Size of inlet connection:	DN 65
Size of outlet connection:	DN 40
Pressure rating for pipe connection:	PN 16
Pump housing with feet:	N
Support block:	Y
Connect code:	F2
<b>Liquid:</b>	
Pumped liquid:	Water
Liquid temperature range:	-25 .. 120 °C
Liquid temperature during operation:	20 °C
Density:	998.2 kg/m <sup>3</sup>
<b>Electrical data:</b>	
IE Efficiency class:	IE3
P2:	15 kW
Mains frequency:	50 Hz
Rated voltage:	3 x 380-415D/660-690Y V
Rated current:	28,0-26,0/16,2-15,6 A
Starting current:	660-780 %
Cos phi - power factor:	0.89-0.87
Rated speed:	2930-2950 rpm
Efficiency:	IE3 91,9%
Motor efficiency at full load:	91.9 %
Motor efficiency at 3/4 load:	92.4 %
Motor efficiency at 1/2 load:	92.4 %
Number of poles:	2
Enclosure class (IEC 34-5):	55 Dust/Jetting





Company name:

Created by:

Phone:

Date:

21/03/2019

Description	Value
Insulation class (IEC 85):	F
Motor protec:	PTC
Motor No:	87420029
Mount. design. acc. IEC 34-7:	IM B35
<b>Controls:</b>	
Frequency converter:	NONE
<b>Others:</b>	
Minimum efficiency index, MEI $\eta_{\%}$ :	0.65
Net weight:	158 kg
Gross weight:	183 kg
Shipping volume:	0.707 m <sup>3</sup>
Country of origin:	HU
Custom tariff no.:	84137051

## 98915632 NB 40-200/219 ASF2ABQQE 50 Hz

