
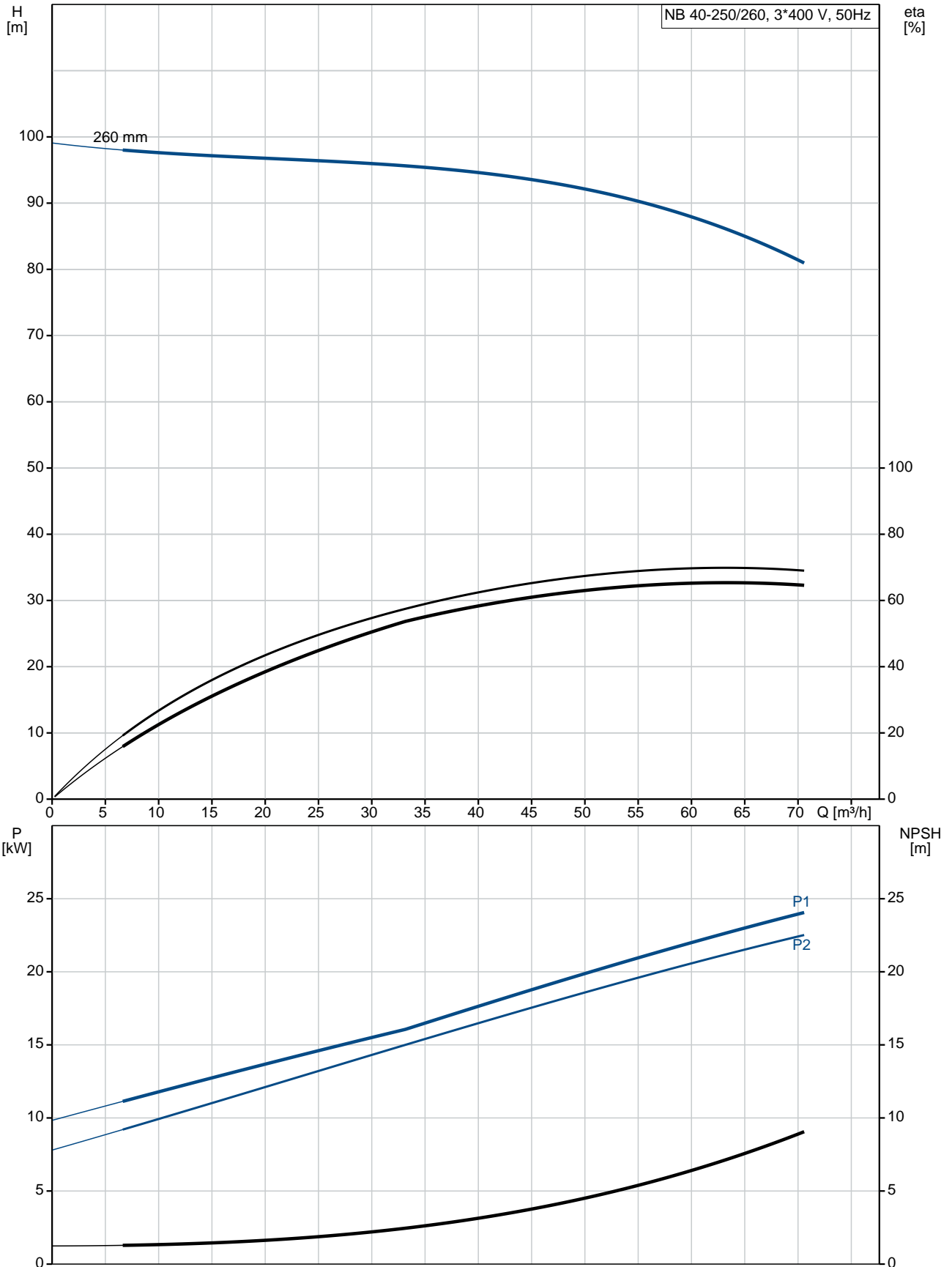


Qty.	Description
1	<p data-bbox="199 338 534 369">NB 40-250/260 ASF2ABQQE</p> <div data-bbox="215 403 566 638">  </div> <p data-bbox="590 629 1077 656" style="text-align: center;">Note! Product picture may differ from actual product</p> <p data-bbox="199 660 470 687">Product No.: 98876844</p> <p data-bbox="199 719 1460 775">Non-self-priming, single-stage, centrifugal volute pump designed according to ISO 5199 with dimensions and rated performance according to EN 733 (10 bar).</p> <p data-bbox="199 806 1452 887">Flanges are PN 16 with dimensions according to EN 1092-2. The pump has an axial suction port, radial discharge port, horizontal shaft and a back pull-out design enabling removal of the motor, motor stool, cover and impeller without disturbing the pump housing or pipework.</p> <p data-bbox="199 896 941 922">The unbalanced rubber bellows seal is according to DIN EN 12756.</p> <p data-bbox="199 925 901 952">The pump is close-coupled to a fan-cooled asynchronous motor.</p> <p data-bbox="199 983 311 1010">Controls:</p> <p data-bbox="199 1012 638 1039">Frequency converter: NONE</p> <p data-bbox="199 1070 287 1097">Liquid:</p> <p data-bbox="199 1099 638 1126">Pumped liquid: Water</p> <p data-bbox="199 1128 710 1155">Liquid temperature range: -25 .. 120 °C</p> <p data-bbox="199 1158 686 1184">Liquid temperature during operation: 20 °C</p> <p data-bbox="199 1187 702 1214">Density: 998.2 kg/m³</p> <p data-bbox="199 1245 327 1272">Technical:</p> <p data-bbox="199 1274 678 1301">Rated flow: 67.3 m³/h</p> <p data-bbox="199 1303 662 1330">Rated head: 82.65 m</p> <p data-bbox="199 1332 662 1359">Actual impeller diameter: 260 mm</p> <p data-bbox="199 1361 662 1388">Nominal impeller diameter: 250 mm</p> <p data-bbox="199 1391 638 1417">Shaft seal arrangement: Single</p> <p data-bbox="199 1420 638 1447">Code for shaft seal: BQQE</p> <p data-bbox="199 1449 766 1476">Curve tolerance: ISO9906:2012 3B</p> <p data-bbox="199 1507 319 1534">Materials:</p> <p data-bbox="199 1536 742 1630">Pump housing: Cast iron EN-GJL-250 ASTM class 35</p> <p data-bbox="199 1639 638 1666">Wear ring: Brass</p> <p data-bbox="199 1668 742 1762">Impeller: Cast iron EN-GJL-200 ASTM class 30</p> <p data-bbox="199 1765 742 1836">Shaft: Stainless steel EN 1.4301 AISI 304</p> <p data-bbox="199 1868 343 1895">Installation:</p> <p data-bbox="199 1897 630 1924">Maximum ambient temperature: 55 °C</p> <p data-bbox="199 1926 638 1953">Maximum operating pressure: 16 bar</p> <p data-bbox="199 1955 686 1982">Pipe connection standard: EN 1092-2</p> <p data-bbox="199 1984 638 2011">Size of inlet connection: DN 65</p> <p data-bbox="199 2013 638 2040">Size of outlet connection: DN 40</p> <p data-bbox="199 2042 686 2069">Pressure rating for pipe connection: PN 16</p> <p data-bbox="199 2072 582 2098">Pump housing with feet: N</p>

Qty.	Description
	Support block: Y
	Electrical data:
	IE Efficiency class: IE3
	P2: 30 kW
	Mains frequency: 50 Hz
	Rated voltage: 3 x 380-420D/660-725Y V
	Rated current: 56,0-51,0/32,0-29,5 A
	Starting current: 660-660 %
	Cos phi - power factor: 0.86
	Rated speed: 2955 rpm
	Efficiency: IE3 93,3%
	Motor efficiency at full load: 93.3-93.3 %
	Motor efficiency at 3/4 load: 93.6-93.6 %
	Motor efficiency at 1/2 load: 93.4-93.4 %
	Number of poles: 2
	Enclosure class (IEC 34-5): 55 Dust/Jetting
	Insulation class (IEC 85): F
	Others:
	Minimum efficiency index, MEI $\hat{\%}$: 0.70
	Net weight: 301 kg
	Gross weight: 326 kg
	Shipping volume: 0.707 m ³
	Country of origin: HU
	Custom tariff no.: 84137051

98876844 NB 40-250/260 ASF2ABQQE 50 Hz



Description	Value
-------------	-------

General information:

Product name: NB 40-250/260 ASF2ABQQE

Product No: 98876844

EAN number: 5712602804058

Price: 5.510,00 GBP

Technical:

Rated flow: 67.3 m³/h

Rated head: 82.65 m

Actual impeller diameter: 260 mm

Nominal impeller diameter: 250 mm

Shaft seal arrangement: Single

Shaft diameter: 24 mm

Code for shaft seal: BQQE

Curve tolerance: ISO9906:2012 3B

Pump version: AS

Materials:

Pump housing: Cast iron

EN-GJL-250

ASTM class 35

Wear ring: Brass

Impeller: Cast iron

EN-GJL-200

ASTM class 30

Shaft: Stainless steel

EN 1.4301

AISI 304

Material code: A

Installation:

Maximum ambient temperature: 55 °C

Maximum operating pressure: 16 bar

Pipe connection standard: EN 1092-2

Size of inlet connection: DN 65

Size of outlet connection: DN 40

Pressure rating for pipe connection: PN 16

Pump housing with feet: N

Support block: Y

Connect code: F2

Liquid:

Pumped liquid: Water

Liquid temperature range: -25 .. 120 °C

Liquid temperature during operation: 20 °C

Density: 998.2 kg/m³

Electrical data:

IE Efficiency class: IE3

P2: 30 kW

Mains frequency: 50 Hz

Rated voltage: 3 x 380-420D/660-725Y V

Rated current: 56,0-51,0/32,0-29,5 A

Starting current: 660-660 %

Cos phi - power factor: 0.86

Rated speed: 2955 rpm

Efficiency: IE3 93,3%

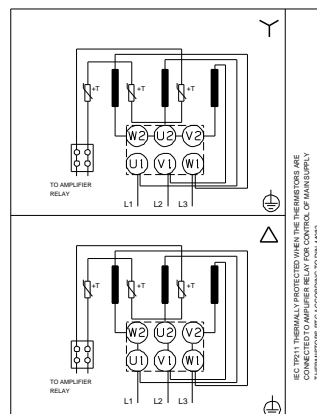
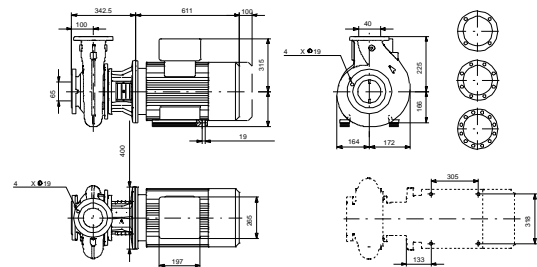
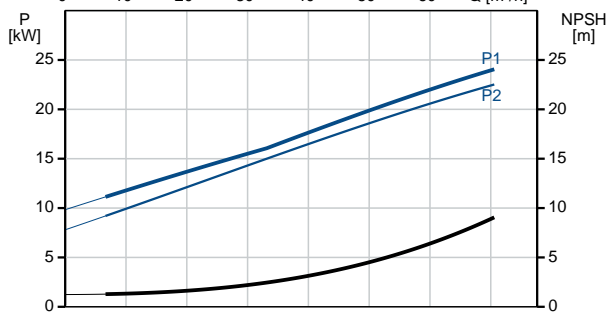
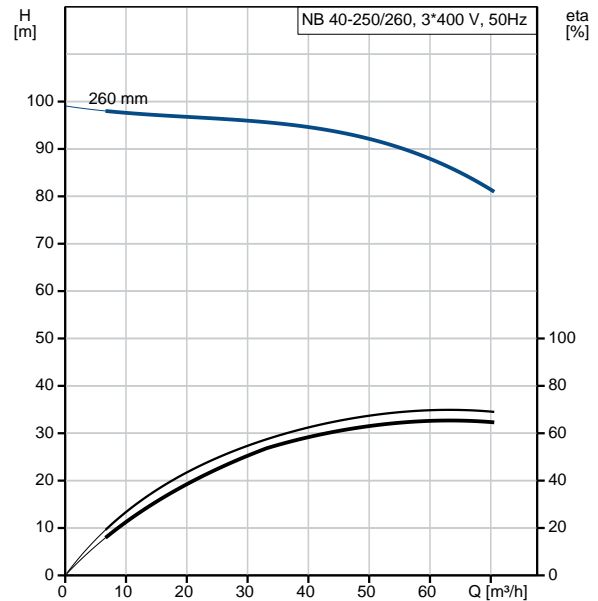
Motor efficiency at full load: 93.3-93.3 %

Motor efficiency at 3/4 load: 93.6-93.6 %

Motor efficiency at 1/2 load: 93.4-93.4 %

Number of poles: 2

Enclosure class (IEC 34-5): 55 Dust/Jetting





Company name:

Created by:

Phone:

Date:

21/03/2019

Description	Value
Insulation class (IEC 85):	F
Motor protec:	PTC
Motor No:	99032145
Mount. design. acc. IEC 34-7:	IM B35
Controls:	
Frequency converter:	NONE
Others:	
Minimum efficiency index, MEI $\eta_{\%}$:	0.70
Net weight:	301 kg
Gross weight:	326 kg
Shipping volume:	0.707 m ³
Country of origin:	HU
Custom tariff no.:	84137051