
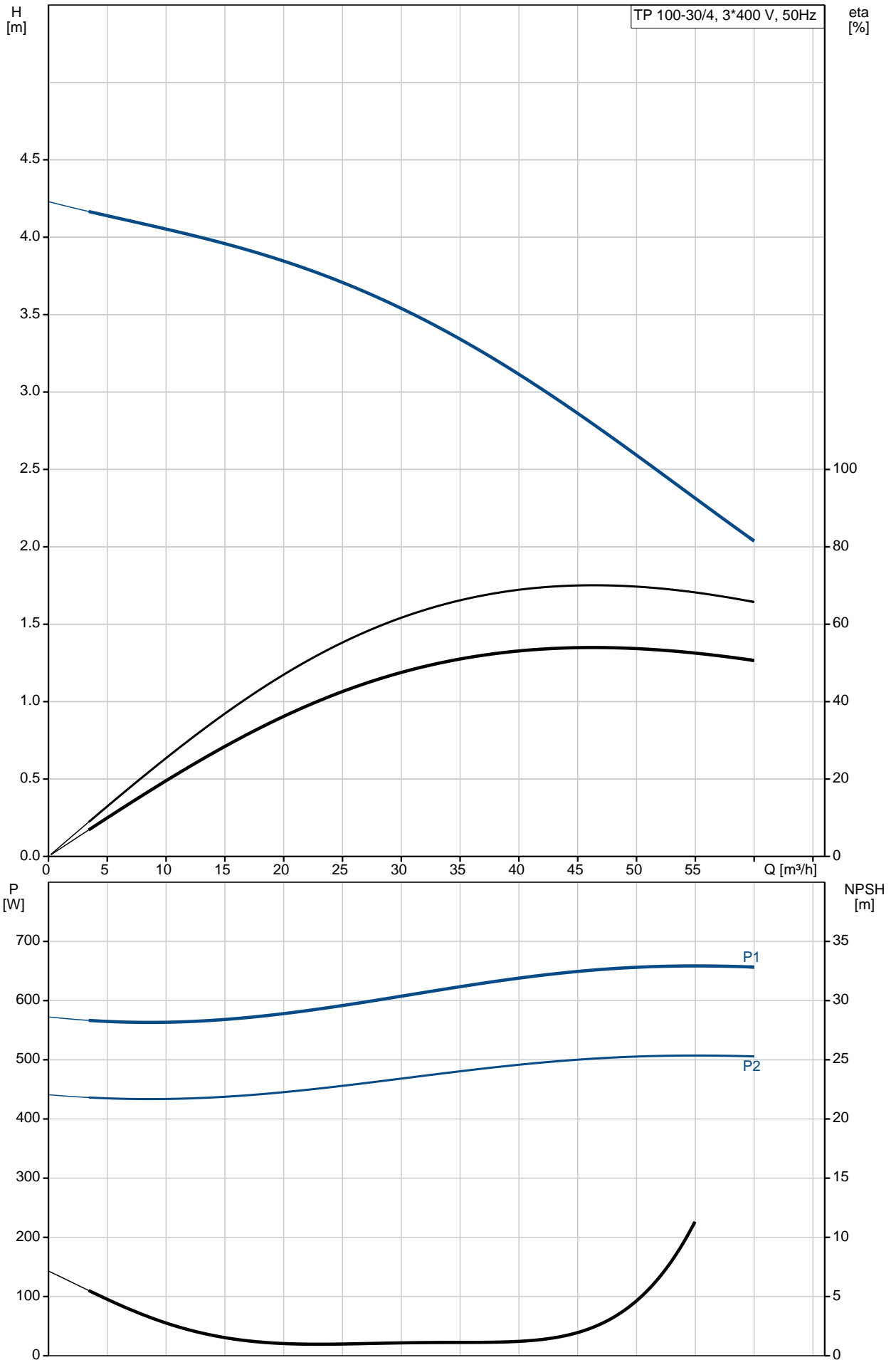


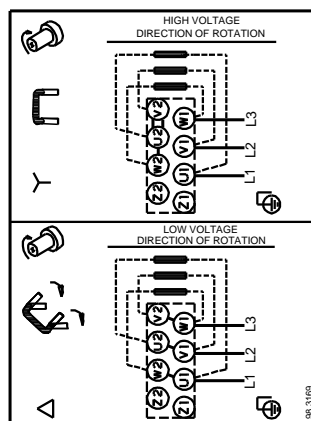
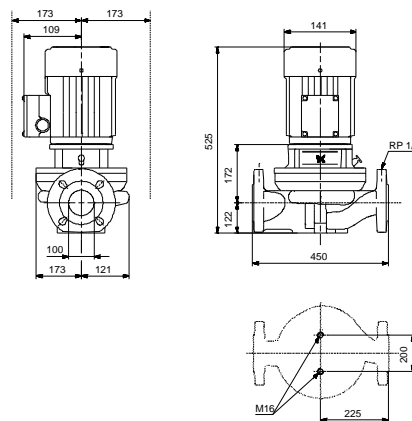
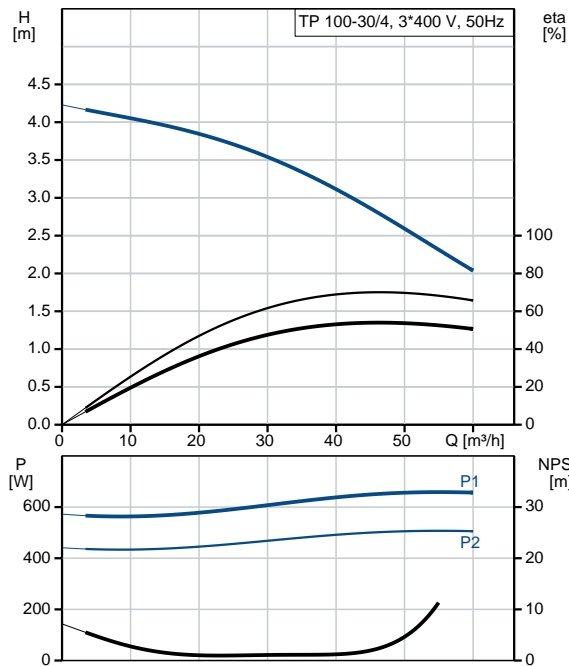
Position	Qty.	Description
	1	<p><b>TP 100-30/4 AI-F-A-BQQE</b></p>  <p>Product No.: <a href="#">98873387</a></p> <p>Single-stage, close-coupled, volute pump with in-line suction and discharge ports of identical diameter. The pump is of the top-pull-out design, i.e. the power head (motor, pump head and impeller) can be removed for maintenance or service while the pump housing remains in the pipework.</p> <p>The pump is fitted with an unbalanced rubber bellows seal. The shaft seal is according to EN 12756. Pipework connection is via PN 6 DIN flanges (EN 1092-2 and ISO 7005-2).</p> <p>The pump is fitted with a fan-cooled asynchronous motor.</p> <p><b>Liquid:</b>  Pumped liquid: Water  Liquid temperature range: -25 .. 120 °C  Liquid temperature during operation: 20 °C  Density: 998.2 kg/m<sup>3</sup></p> <p><b>Technical:</b>  Speed for pump data: 1440 rpm  Rated flow: 46.1 m<sup>3</sup>/h  Rated head: 2.8 m  Actual impeller diameter: 119 mm  Primary shaft seal: BQQE  Curve tolerance: ISO9906:2012 3B</p> <p><b>Materials:</b>  Pump housing: Cast iron  EN-JL1040  ASTM A48-40 B  Impeller: Stainless steel  DIN W.-Nr. 1.4301  AISI 304</p> <p><b>Installation:</b>  Range of ambient temperature: -30 .. 40 °C  Maximum operating pressure: 6 bar  Flange standard: DIN  Pipe connection: DN 100  Pump inlet: DN 100  Pump outlet: DN 100  Pressure stage: PN 6  Port-to-port length: 450 mm  Flange size for motor: FT100</p> <p><b>Electrical data:</b>  Motor type: 80A  IE Efficiency class: NA  Rated power - P2: 0.55 kW  Power (P2) required by pump: 0.55 kW  Mains frequency: 50 Hz  Rated voltage: 3 x 220-240D/380-415Y V  Rated current: 2,60/1,50 A  Starting current: 430-470 %  Cos phi - power factor: 0,79-0,70  Rated speed: 1390-1410 rpm</p>

Position	Qty.	Description
		Efficiency: 70,0% Motor efficiency at full load: 70.0 % Motor efficiency at 3/4 load: 79 % Motor efficiency at 1/2 load: 78.1 % Number of poles: 4 Enclosure class (IEC 34-5): 55 Dust/Jetting Insulation class (IEC 85): F  <b>Others:</b> Minimum efficiency index, MEI : 0.45 ErP status: EuP Standalone/Prod. Net weight: 46 kg Gross weight: 52.6 kg Shipping volume: 0.16 m <sup>3</sup>

# 98873387 TP 100-30/4 50 Hz

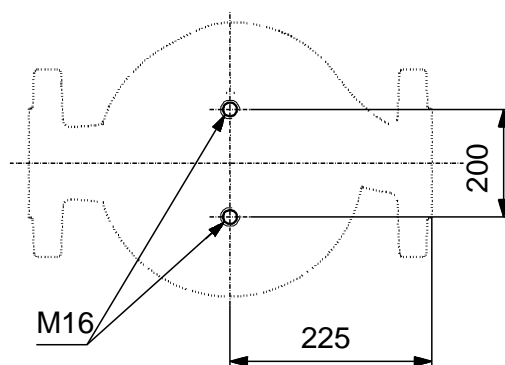
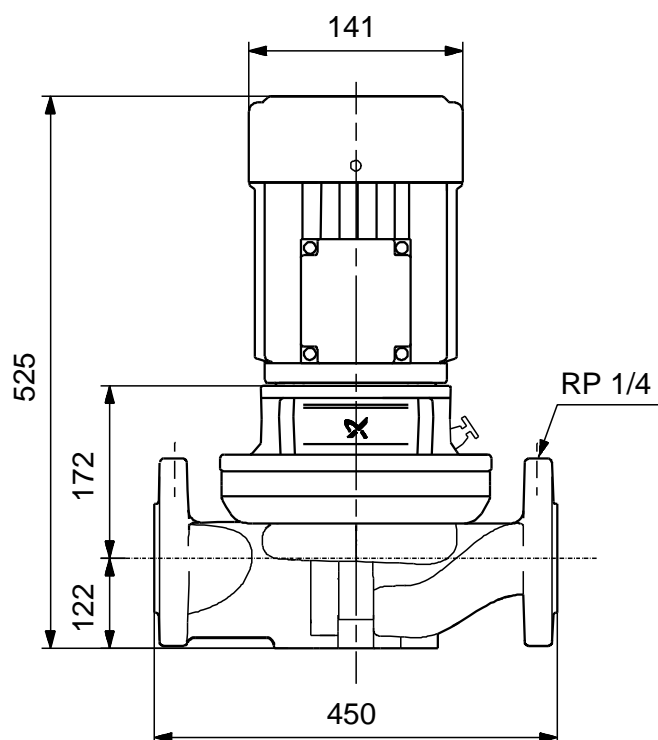
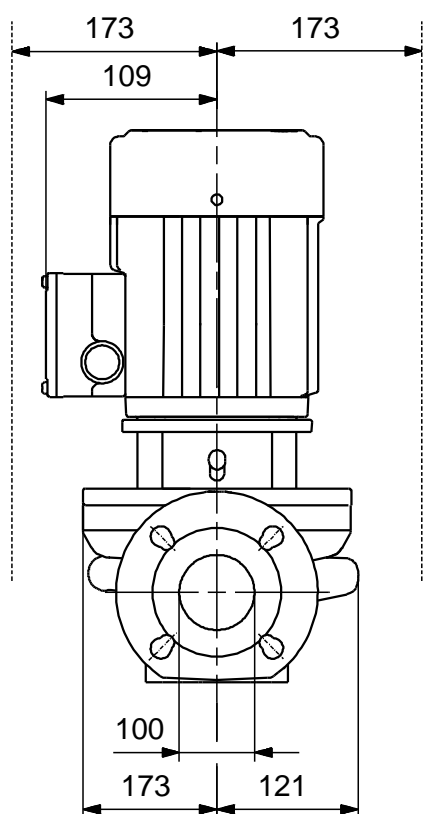


Description	Value
<b>General information:</b>	
Product name:	TP 100-30/4 AI-F-A-BQQE
Product No:	98873387
EAN number:	5712602745764
<b>Technical:</b>	
Speed for pump data:	1440 rpm
Rated flow:	46.1 m <sup>3</sup> /h
Rated head:	2.8 m
Head max:	30 dm
Actual impeller diameter:	119 mm
Primary shaft seal:	BQQE
Curve tolerance:	ISO9906:2012 3B
Pump version:	AI
Model:	A
<b>Materials:</b>	
Pump housing:	Cast iron EN-JL1040 ASTM A48-40 B
Impeller:	Stainless steel DIN W.-Nr. 1.4301 AISI 304
Material code:	A
<b>Installation:</b>	
Range of ambient temperature:	-30 .. 40 °C
Maximum operating pressure:	6 bar
Flange standard:	DIN
Connect code:	F
Pipe connection:	DN 100
Pump inlet:	DN 100
Pump outlet:	DN 100
Pressure stage:	PN 6
Port-to-port length:	450 mm
Flange size for motor:	FT100
<b>Liquid:</b>	
Pumped liquid:	Water
Liquid temperature range:	-25 .. 120 °C
Liquid temperature during operation:	20 °C
Density:	998.2 kg/m <sup>3</sup>
<b>Electrical data:</b>	
Motor type:	80A
IE Efficiency class:	NA
Rated power - P2:	0.55 kW
Power (P2) required by pump:	0.55 kW
Mains frequency:	50 Hz
Rated voltage:	3 x 220-240D/380-415Y V
Rated current:	2,60/1,50 A
Starting current:	430-470 %
Cos phi - power factor:	0,79-0,70
Rated speed:	1390-1410 rpm
Efficiency:	70,0%
Motor efficiency at full load:	70.0 %
Motor efficiency at 3/4 load:	79 %
Motor efficiency at 1/2 load:	78.1 %
Number of poles:	4
Enclosure class (IEC 34-5):	55 Dust/Jetting
Insulation class (IEC 85):	F
Motor protec:	NONE
Motor No:	86805103

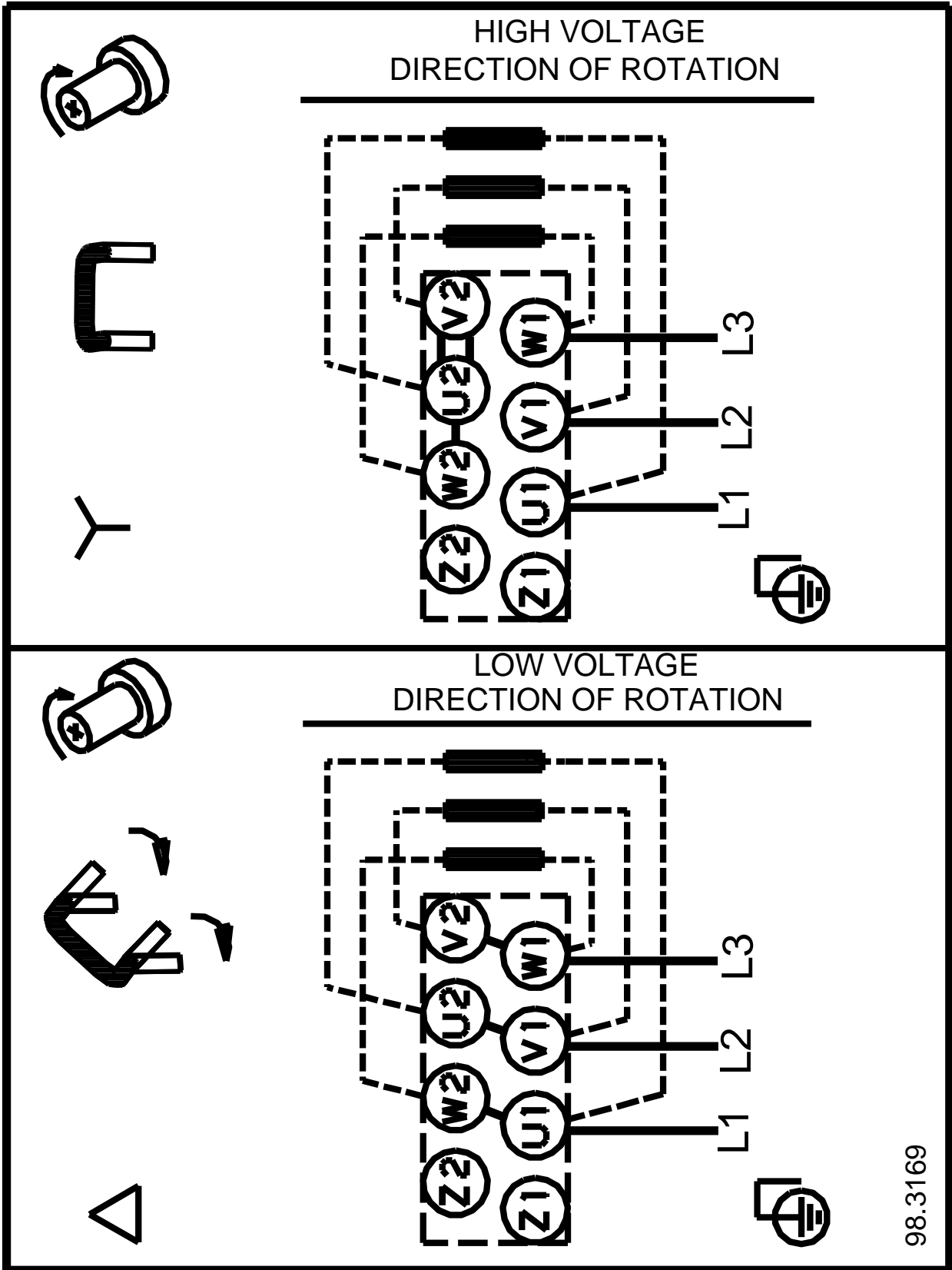


Description	Value
<b>Others:</b>	
Minimum efficiency index, MEI :	0.45
ErP status:	EuP Standalone/Prod.
Net weight:	46 kg
Gross weight:	52.6 kg
Shipping volume:	0.16 m <sup>3</sup>

# 98873387 TP 100-30/4 50 Hz



Note! All units are in [mm] unless others are stated.  
Disclaimer: This simplified dimensional drawing does not show all details.



98.3169

Note! All units are in [mm] unless others are stated.