
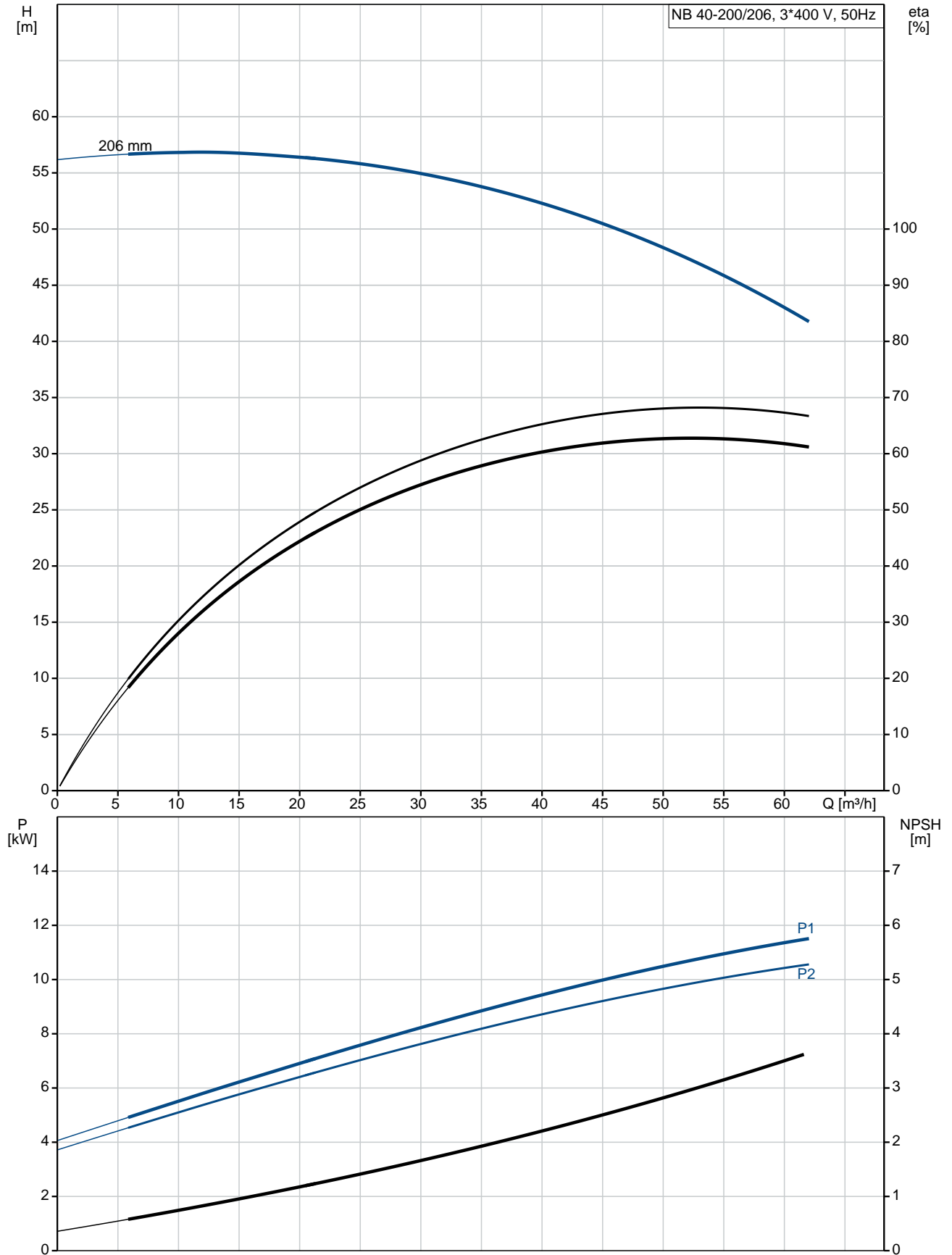


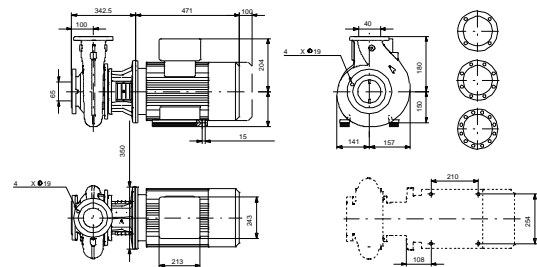
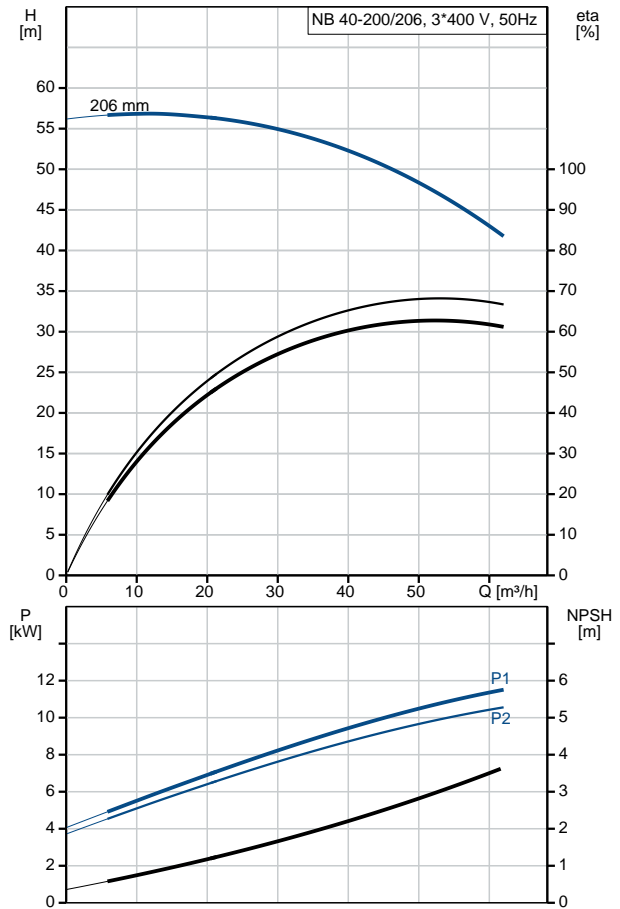
Qty.	Description
1	<p data-bbox="199 340 534 362">NB 40-200/206 ASF2ABQQE</p> <div data-bbox="215 403 566 638">  </div> <p data-bbox="590 631 1077 654" style="text-align: center;">Note! Product picture may differ from actual product</p> <p data-bbox="199 663 470 685">Product No.: 98849201</p> <p data-bbox="199 721 1460 772">Non-self-priming, single-stage, centrifugal volute pump designed according to ISO 5199 with dimensions and rated performance according to EN 733 (10 bar).</p> <p data-bbox="199 808 1460 884">Flanges are PN 16 with dimensions according to EN 1092-2. The pump has an axial suction port, radial discharge port, horizontal shaft and a back pull-out design enabling removal of the motor, motor stool, cover and impeller without disturbing the pump housing or pipework.</p> <p data-bbox="199 898 941 920">The unbalanced rubber bellows seal is according to DIN EN 12756.</p> <p data-bbox="199 925 909 947">The pump is close-coupled to a fan-cooled asynchronous motor.</p> <p data-bbox="199 983 311 1005">Controls:</p> <p data-bbox="199 1010 638 1032">Frequency converter: NONE</p> <p data-bbox="199 1068 287 1090">Liquid:</p> <p data-bbox="199 1095 638 1117">Pumped liquid: Water</p> <p data-bbox="199 1122 710 1144">Liquid temperature range: -25 .. 120 °C</p> <p data-bbox="199 1149 686 1171">Liquid temperature during operation: 20 °C</p> <p data-bbox="199 1176 702 1198">Density: 998.2 kg/m³</p> <p data-bbox="199 1234 327 1256">Technical:</p> <p data-bbox="199 1261 678 1283">Rated flow: 55.8 m³/h</p> <p data-bbox="199 1288 662 1310">Rated head: 45.02 m</p> <p data-bbox="199 1314 662 1337">Actual impeller diameter: 206 mm</p> <p data-bbox="199 1341 662 1364">Nominal impeller diameter: 200 mm</p> <p data-bbox="199 1368 638 1391">Shaft seal arrangement: Single</p> <p data-bbox="199 1395 638 1417">Code for shaft seal: BQQE</p> <p data-bbox="199 1422 766 1444">Curve tolerance: ISO9906:2012 3B</p> <p data-bbox="199 1480 319 1503">Materials:</p> <p data-bbox="199 1507 734 1597">Pump housing: Cast iron EN-GJL-250 ASTM class 35</p> <p data-bbox="199 1601 638 1624">Wear ring: Brass</p> <p data-bbox="199 1628 734 1718">Impeller: Cast iron EN-GJL-200 ASTM class 30</p> <p data-bbox="199 1722 734 1812">Shaft: Stainless steel EN 1.4301 AISI 304</p> <p data-bbox="199 1848 343 1870">Installation:</p> <p data-bbox="199 1874 638 1897">Maximum ambient temperature: 60 °C</p> <p data-bbox="199 1901 638 1924">Maximum operating pressure: 16 bar</p> <p data-bbox="199 1928 686 1951">Pipe connection standard: EN 1092-2</p> <p data-bbox="199 1955 638 1977">Size of inlet connection: DN 65</p> <p data-bbox="199 1982 638 2004">Size of outlet connection: DN 40</p> <p data-bbox="199 2009 686 2031">Pressure rating for pipe connection: PN 16</p> <p data-bbox="199 2036 590 2058">Pump housing with feet: N</p>

Qty.	Description
	<p>Support block: Y</p> <p>Electrical data:</p> <p>IE Efficiency class: IE3</p> <p>P2: 11 kW</p> <p>Mains frequency: 50 Hz</p> <p>Rated voltage: 3 x 380-415D/660-690Y V</p> <p>Rated current: 20,8-19,8/12,0-11,8 A</p> <p>Starting current: 660-780 %</p> <p>Cos phi - power factor: 0.88-0.84</p> <p>Rated speed: 2940-2950 rpm</p> <p>Efficiency: IE3 91,2%</p> <p>Motor efficiency at full load: 91.2 %</p> <p>Motor efficiency at 3/4 load: 91.8 %</p> <p>Motor efficiency at 1/2 load: 91.3 %</p> <p>Number of poles: 2</p> <p>Enclosure class (IEC 34-5): 55 Dust/Jetting</p> <p>Insulation class (IEC 85): F</p> <p>Others:</p> <p>Minimum efficiency index, MEI $\hat{\alpha}\%$: 0.65</p> <p>Net weight: 146 kg</p> <p>Gross weight: 171 kg</p> <p>Shipping volume: 0.707 m³</p> <p>Country of origin: HU</p> <p>Custom tariff no.: 84137051</p>

98849201 NB 40-200/206 ASF2ABQQE 50 Hz



Description	Value
General information:	
Product name:	NB 40-200/206 ASF2ABQQE
Product No:	98849201
EAN number:	5712602356953
Price:	3.147,00 GBP
Technical:	
Rated flow:	55.8 m ³ /h
Rated head:	45.02 m
Actual impeller diameter:	206 mm
Nominal impeller diameter:	200 mm
Shaft seal arrangement:	Single
Shaft diameter:	24 mm
Code for shaft seal:	BQQE
Curve tolerance:	ISO9906:2012 3B
Pump version:	AS
Materials:	
Pump housing:	Cast iron EN-GJL-250 ASTM class 35
Wear ring:	Brass
Impeller:	Cast iron EN-GJL-200 ASTM class 30
Shaft:	Stainless steel EN 1.4301 AISI 304
Material code:	A
Installation:	
Maximum ambient temperature:	60 °C
Maximum operating pressure:	16 bar
Pipe connection standard:	EN 1092-2
Size of inlet connection:	DN 65
Size of outlet connection:	DN 40
Pressure rating for pipe connection:	PN 16
Pump housing with feet:	N
Support block:	Y
Connect code:	F2
Liquid:	
Pumped liquid:	Water
Liquid temperature range:	-25 .. 120 °C
Liquid temperature during operation:	20 °C
Density:	998.2 kg/m ³
Electrical data:	
IE Efficiency class:	IE3
P2:	11 kW
Mains frequency:	50 Hz
Rated voltage:	3 x 380-415D/660-690Y V
Rated current:	20,8-19,8/12,0-11,8 A
Starting current:	660-780 %
Cos phi - power factor:	0.88-0.84
Rated speed:	2940-2950 rpm
Efficiency:	IE3 91,2%
Motor efficiency at full load:	91.2 %
Motor efficiency at 3/4 load:	91.8 %
Motor efficiency at 1/2 load:	91.3 %
Number of poles:	2
Enclosure class (IEC 34-5):	55 Dust/Jetting





Company name:

Created by:

Phone:

Date:

21/03/2019

Description	Value
Insulation class (IEC 85):	F
Motor protec:	PTC
Motor No:	87420028
Mount. design. acc. IEC 34-7:	IM B35
Controls:	
Frequency converter:	NONE
Others:	
Minimum efficiency index, MEI $\eta_{\%}$:	0.65
Net weight:	146 kg
Gross weight:	171 kg
Shipping volume:	0.707 m ³
Country of origin:	HU
Custom tariff no.:	84137051

98849201 NB 40-200/206 ASF2ABQQE 50 Hz

