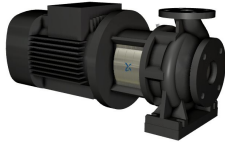


Qty. Description

1 **NB 40-160/172 AS-F2-A-E-BQQE**



Product No.: [98833679](#)

Non-self-priming, single-stage, centrifugal volute pump designed according to ISO 5199 with dimensions and rated performance according to EN 733 (10 bar). Flanges are PN 16 with dimensions according to EN 1092-2. The pump has an axial suction port, radial discharge port, horizontal shaft and a back pull-out design enabling removal of the motor, motor stool, cover and impeller without disturbing the pump housing or pipework.

The unbalanced rubber bellows seal is according to DIN EN 12756.

The pump is close-coupled to a fan-cooled asynchronous motor.

Liquid:

Pumped liquid: Water
 Liquid temperature range: -25 .. 120 °C
 Liquid temperature during operation: 20 °C
 Density: 998.2 kg/m³

Technical:

Pump speed on which pump data are based: 2910 rpm
 Rated flow: 48.1 m³/h
 Rated head: 36.3 m
 Actual impeller diameter: 172 mm
 Impeller nom: 160 mm
 Primary shaft seal: BQQE
 Secondary shaft seal: NONE
 Curve tolerance: ISO9906:2012 3B

Materials:

Pump housing: Cast iron
 EN-GJL-250
 ASTM A48-40 B
 Impeller: Cast iron
 EN-GJL-200
 ASTM A48-30 B
 Shaft: Stainless steel
 1.4301
 304
 Rubber: EPDM
 Wear ring mat.: High alloy brass(CuZn34Mn3Al2)

Installation:

Maximum ambient temperature: 60 °C
 Maximum operating pressure: 16 bar
 Flange standard: EN 1092-2
 Pump inlet: DN 65
 Pump outlet: DN 40
 Pressure rating: PN 16

Electrical data:

Motor type: 132SB
 IE Efficiency class: IE3

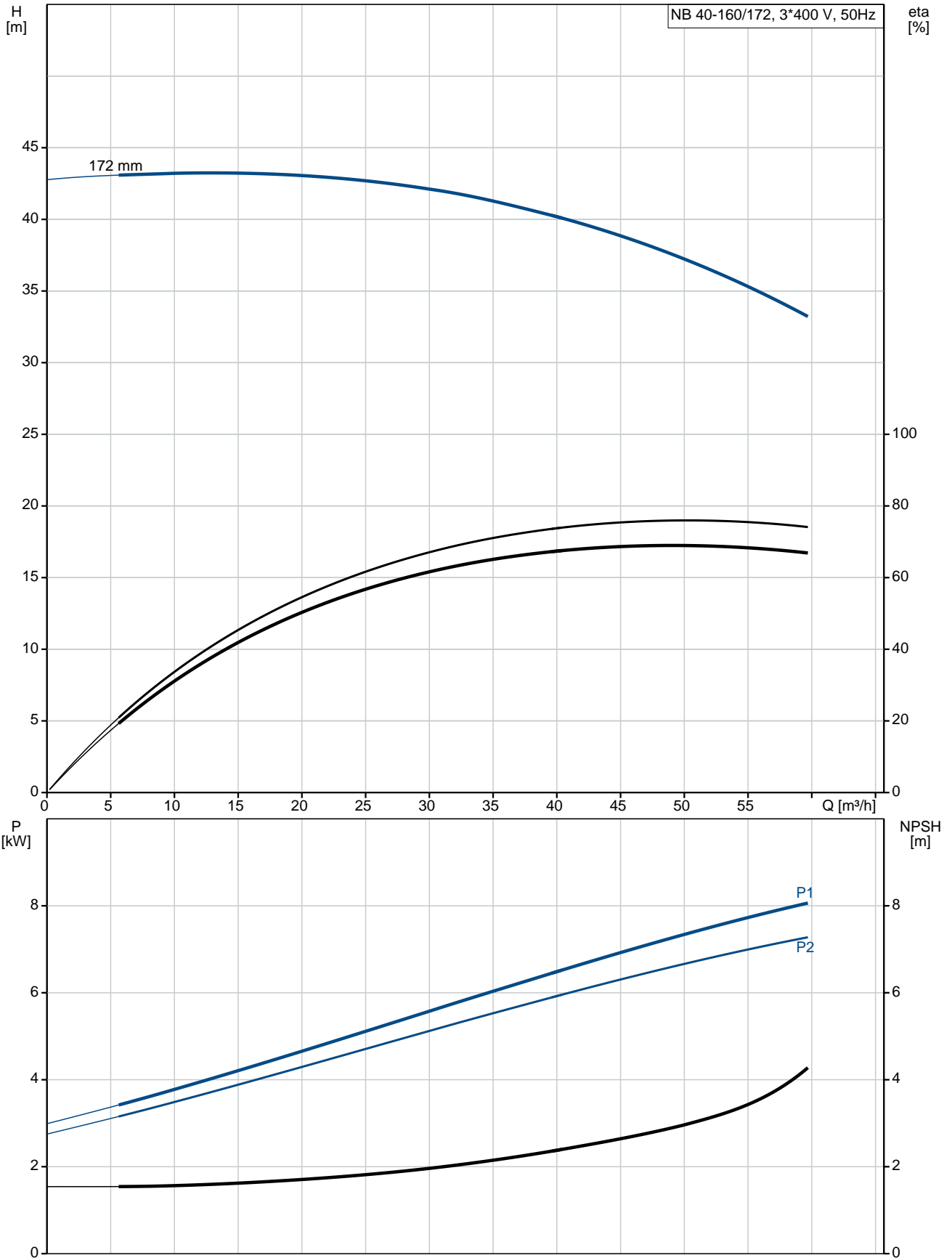
Qty.	Description
------	-------------

Rated power - P2:	7.5 kW
Mains frequency:	50 Hz
Rated voltage:	3 x 380-415D/660-690Y V
Rated current:	14,4-14,0/8,30-8,10 A
Starting current:	780-910 %
Cos phi - power factor:	0.88-0.86
Rated speed:	2910-2920 rpm
Efficiency:	IE3 90,1% - IE3 90,4%
Motor efficiency at full load:	90.1-90.4 %
Motor efficiency at 3/4 load:	90.8 %
Motor efficiency at 1/2 load:	90.8 %
Number of poles:	2
Enclosure class (IEC 34-5):	55 Dust/Jetting
Insulation class (IEC 85):	F
Lubricant type:	Grease

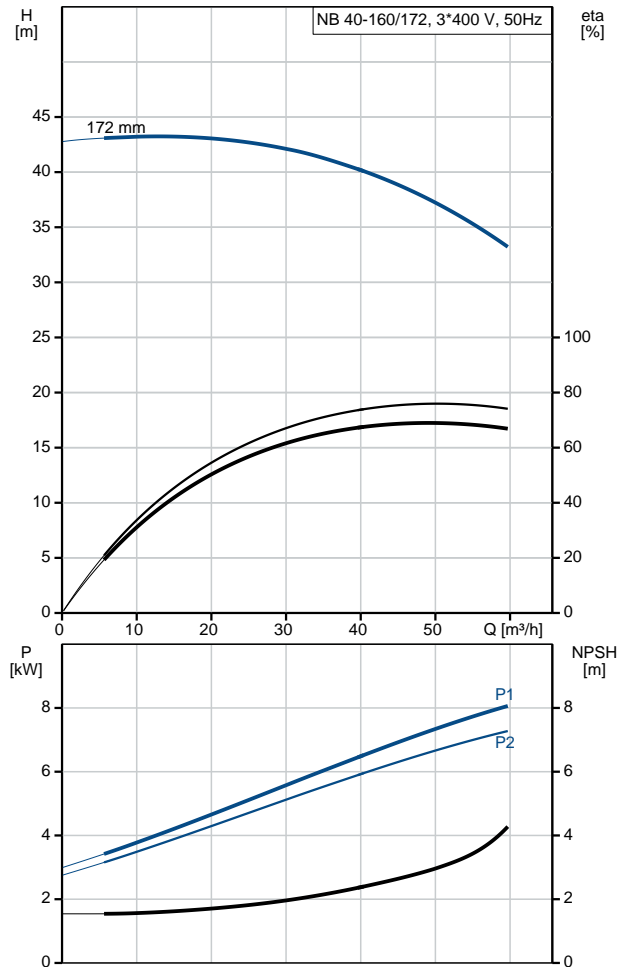
Others:

Minimum efficiency index, MEI η_{min} :	0.70
ErP status:	EuP Standalone/Prod.
Net weight:	90 kg
Gross weight:	112 kg
Shipping volume:	0.509 m ³

98833679 NB 40-160/172 AS-F2-A-E-BQQE 50 Hz



Description	Value
General information:	
Product name:	NB 40-160/172 AS-F2-A-E-BQQE
Product No:	98833679
EAN number:	5712602080094
Technical:	
Pump speed on which pump data are based:	2910 rpm
Rated flow:	48.1 m ³ /h
Rated head:	36.3 m
Actual impeller diameter:	172 mm
Impeller nom:	160 mm
Primary shaft seal:	BQQE
Shaft diameter:	24 mm
Secondary shaft seal:	NONE
Curve tolerance:	ISO9906:2012 3B
Pump version:	AS
Materials:	
Pump housing:	Cast iron EN-GJL-250 ASTM A48-40 B
Impeller:	Cast iron EN-GJL-200 ASTM A48-30 B
Shaft:	Stainless steel 1.4301 304
Material code:	A
Rubber:	EPDM
Code for rubber:	E
Wear ring mat.:	High alloy brass(CuZn34Mn3Al2)
Installation:	
Maximum ambient temperature:	60 °C
Maximum operating pressure:	16 bar
Flange standard:	EN 1092-2
Pump inlet:	DN 65
Pump outlet:	DN 40
Pressure rating:	PN 16
Wear ring(s):	neckring(s)
Connect code:	F2
Liquid:	
Pumped liquid:	Water
Liquid temperature range:	-25 .. 120 °C
Liquid temperature during operation:	20 °C
Density:	998.2 kg/m ³
Electrical data:	
Motor type:	132SB
IE Efficiency class:	IE3
Rated power - P2:	7.5 kW
Mains frequency:	50 Hz
Rated voltage:	3 x 380-415D/660-690Y V
Rated current:	14,4-14,0/8,30-8,10 A
Starting current:	780-910 %
Cos phi - power factor:	0.88-0.86
Rated speed:	2910-2920 rpm
Efficiency:	IE3 90,1% - IE3 90,4%
Motor efficiency at full load:	90.1-90.4 %
Motor efficiency at 3/4 load:	90.8 %





Company name:

Created by:

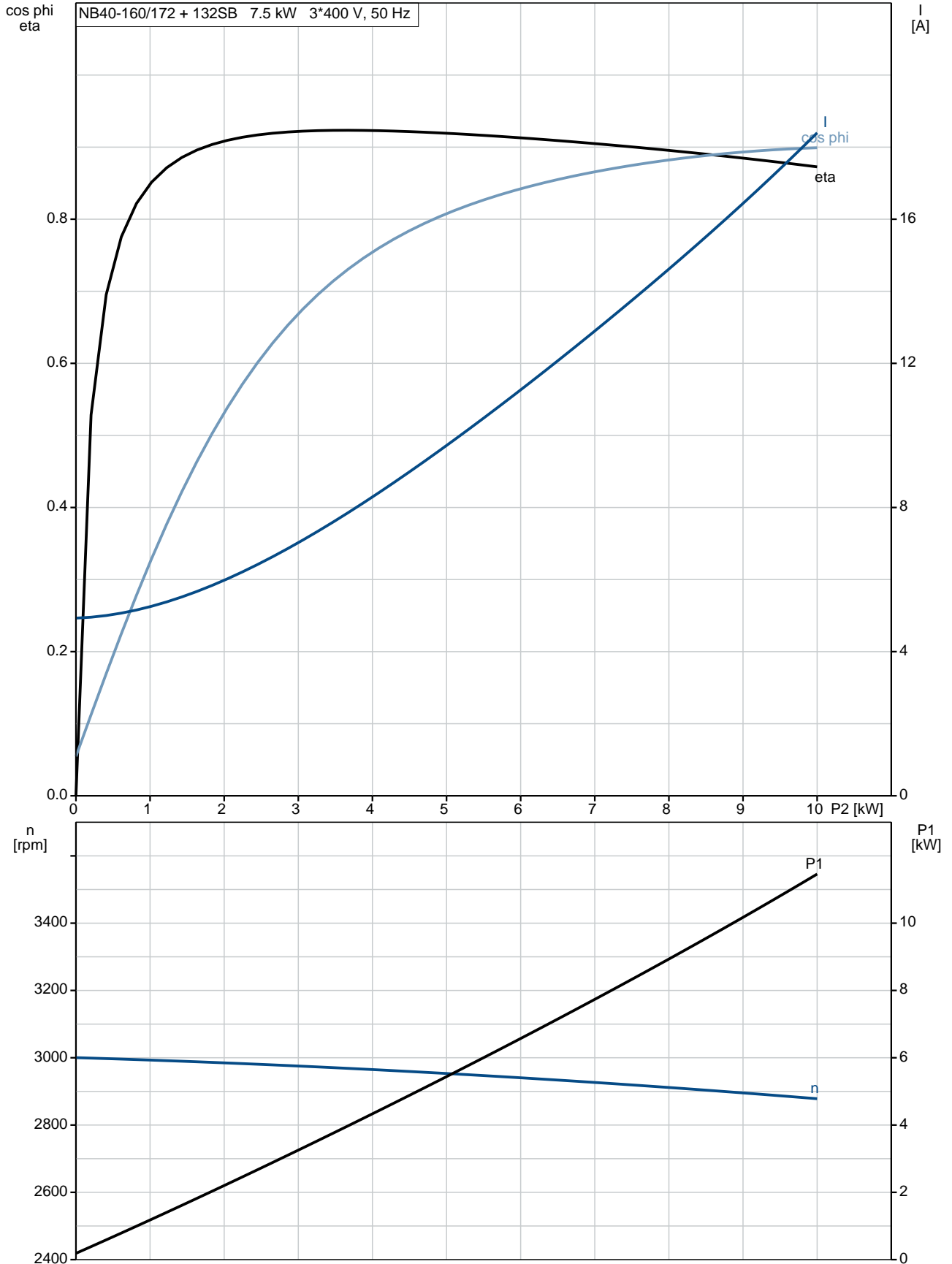
Phone:

Date:

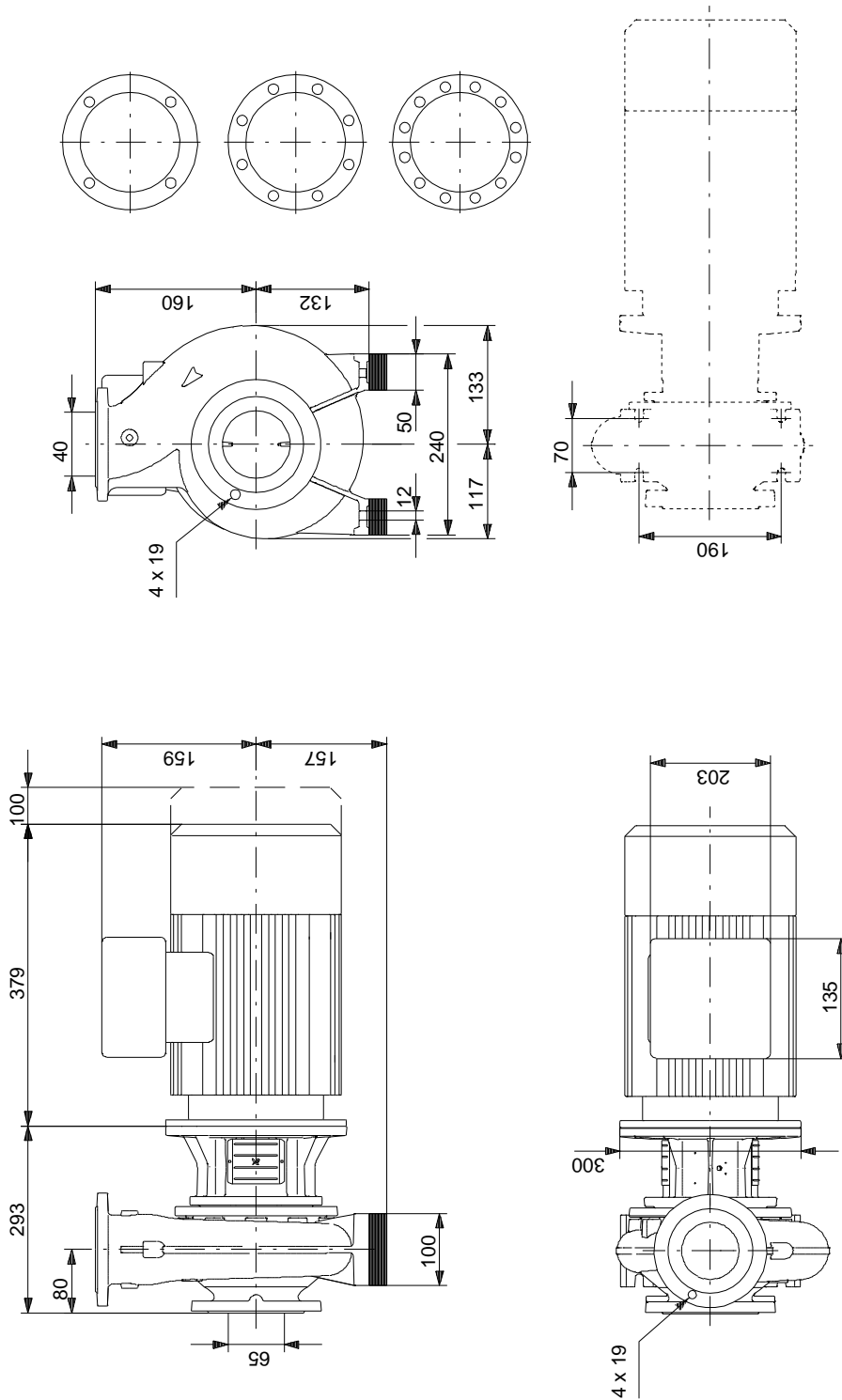
22/02/2019

Description	Value
Motor efficiency at 1/2 load:	90.8 %
Number of poles:	2
Enclosure class (IEC 34-5):	55 Dust/Jetting
Insulation class (IEC 85):	F
Motor protec:	PTC
Motor No:	87370232
Mount. design. acc. IEC 34-7:	IM V1/B5
Lubricant type:	Grease
Others:	
Minimum efficiency index, MEI %:	0.70
ErP status:	EuP Standalone/Prod.
Net weight:	90 kg
Gross weight:	112 kg
Shipping volume:	0.509 m ³

98833679 NB 40-160/172 AS-F2-A-E-BQQE 50 Hz

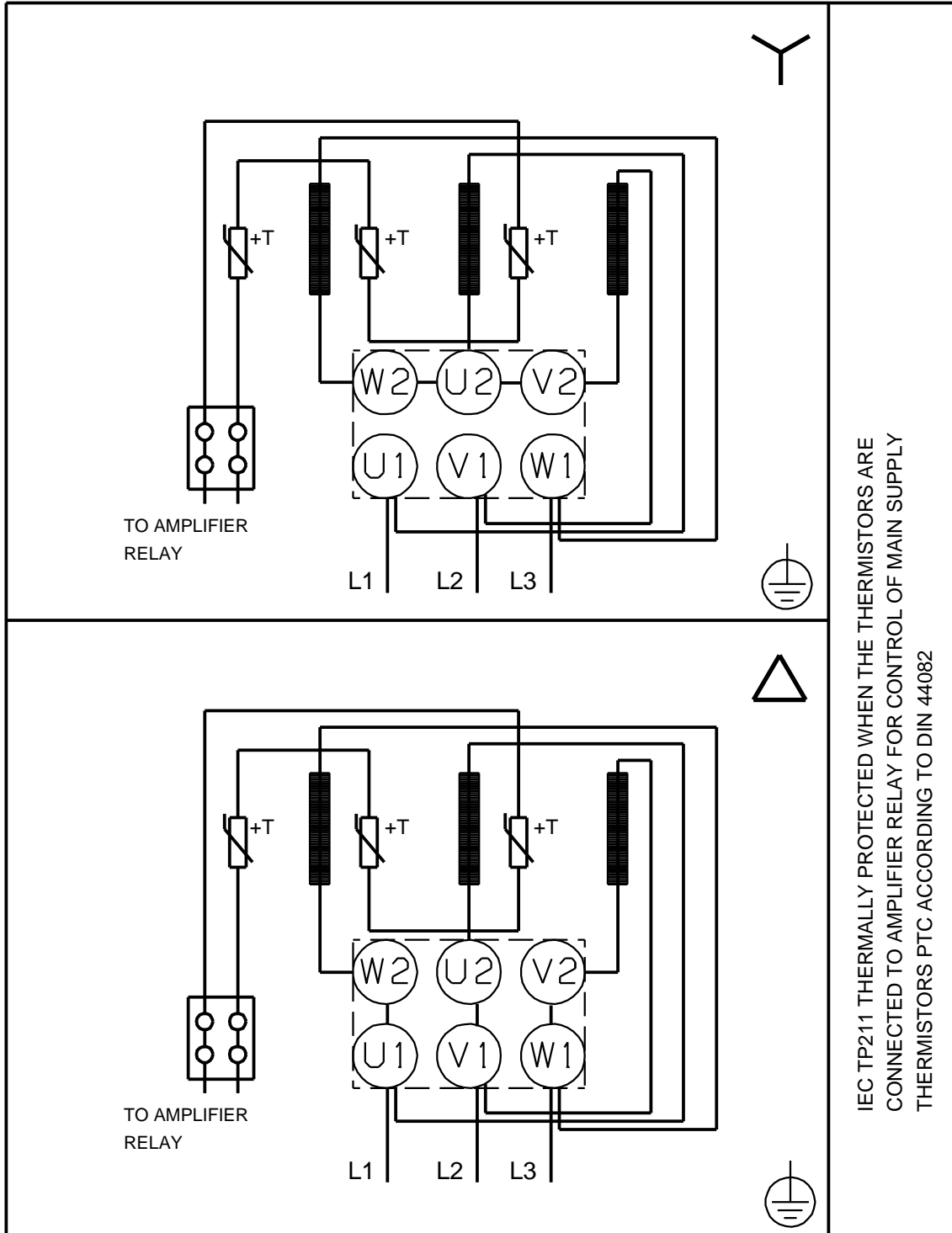


98833679 NB 40-160/172 AS-F2-A-E-BQQE 50 Hz



Note! All units are in [mm] unless others are stated.
 Disclaimer: This simplified dimensional drawing does not show all details.

98833679 NB 40-160/172 AS-F2-A-E-BQQE 50 Hz



IEC TP211 THERMALLY PROTECTED WHEN THE THERMISTORS ARE
CONNECTED TO AMPLIFIER RELAY FOR CONTROL OF MAIN SUPPLY
THERMISTORS PTC ACCORDING TO DIN 44082

Note! All units are in [mm] unless others are stated.