


Position	Qty.	Description
	1	<p><b>TP 65-120/2 A-F-A-BQQE</b></p>  <p>Product No.: <a href="#">98830721</a></p> <p>Single-stage, close-coupled, volute pump with in-line suction and discharge ports of identical diameter. The pump is of the top-pull-out design, i.e. the power head (motor, pump head and impeller) can be removed for maintenance or service while the pump housing remains in the pipework.</p> <p>The pump is fitted with an unbalanced rubber bellows seal. The shaft seal is according to EN 12756. Pipework connection is via PN 6/10 DIN flanges (EN 1092-2 and ISO 7005-2).</p> <p>The pump is fitted with a fan-cooled asynchronous motor.</p> <p><b>Liquid:</b>  Pumped liquid: Water  Liquid temperature range: -25 .. 120 °C  Liquid temperature during operation: 20 °C  Density: 998.2 kg/m<sup>3</sup></p> <p><b>Technical:</b>  Speed for pump data: 2880 rpm  Rated flow: 25.1 m<sup>3</sup>/h  Rated head: 8.16 m  Actual impeller diameter: 91 mm  Primary shaft seal: BQQE  Curve tolerance: ISO9906:2012 3B</p> <p><b>Materials:</b>  Pump housing: Cast iron  EN-JL1040  ASTM A48-40 B  Impeller: Stainless steel  DIN W.-Nr. 1.4301  AISI 304</p> <p><b>Installation:</b>  Range of ambient temperature: -30 .. 40 °C  Maximum operating pressure: 10 bar  Flange standard: DIN  Pipe connection: DN 65  Pump inlet: DN 65  Pump outlet: DN 65  Pressure rating: PN 6/10  Port-to-port length: 340 mm  Flange size for motor: FT115</p> <p><b>Electrical data:</b>  Motor type: 90SB  IE Efficiency class: NA  Rated power - P2: 1.1 kW  Power (P2) required by pump: 1.1 kW  Mains frequency: 50 Hz</p>



Company name:

Created by:

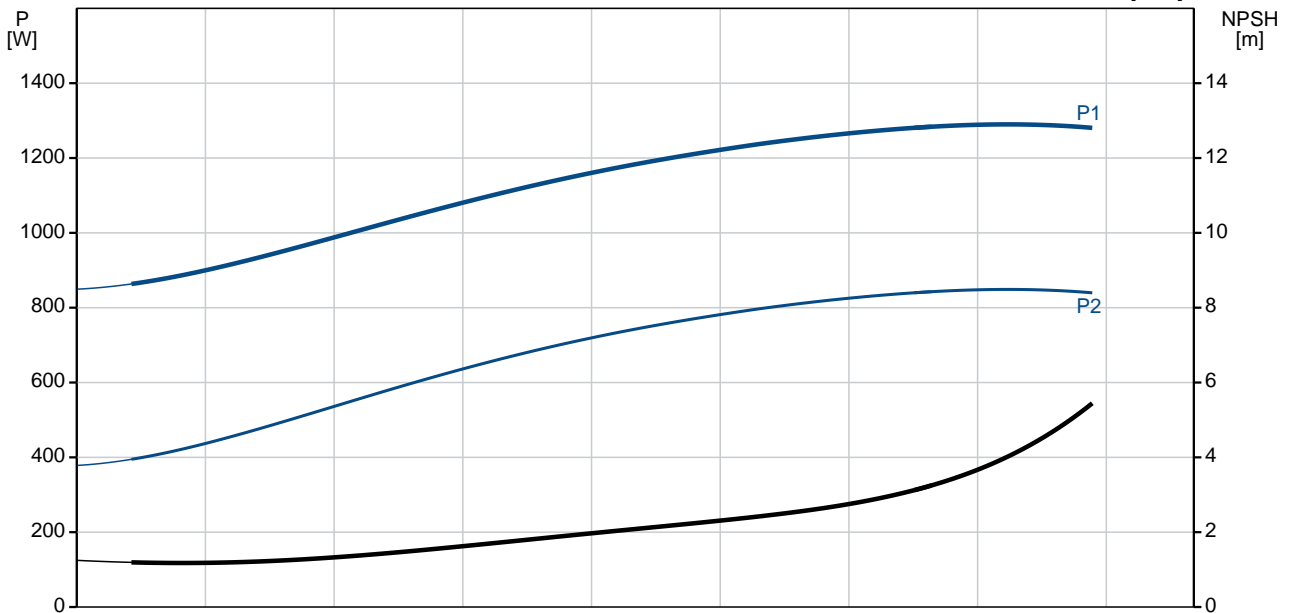
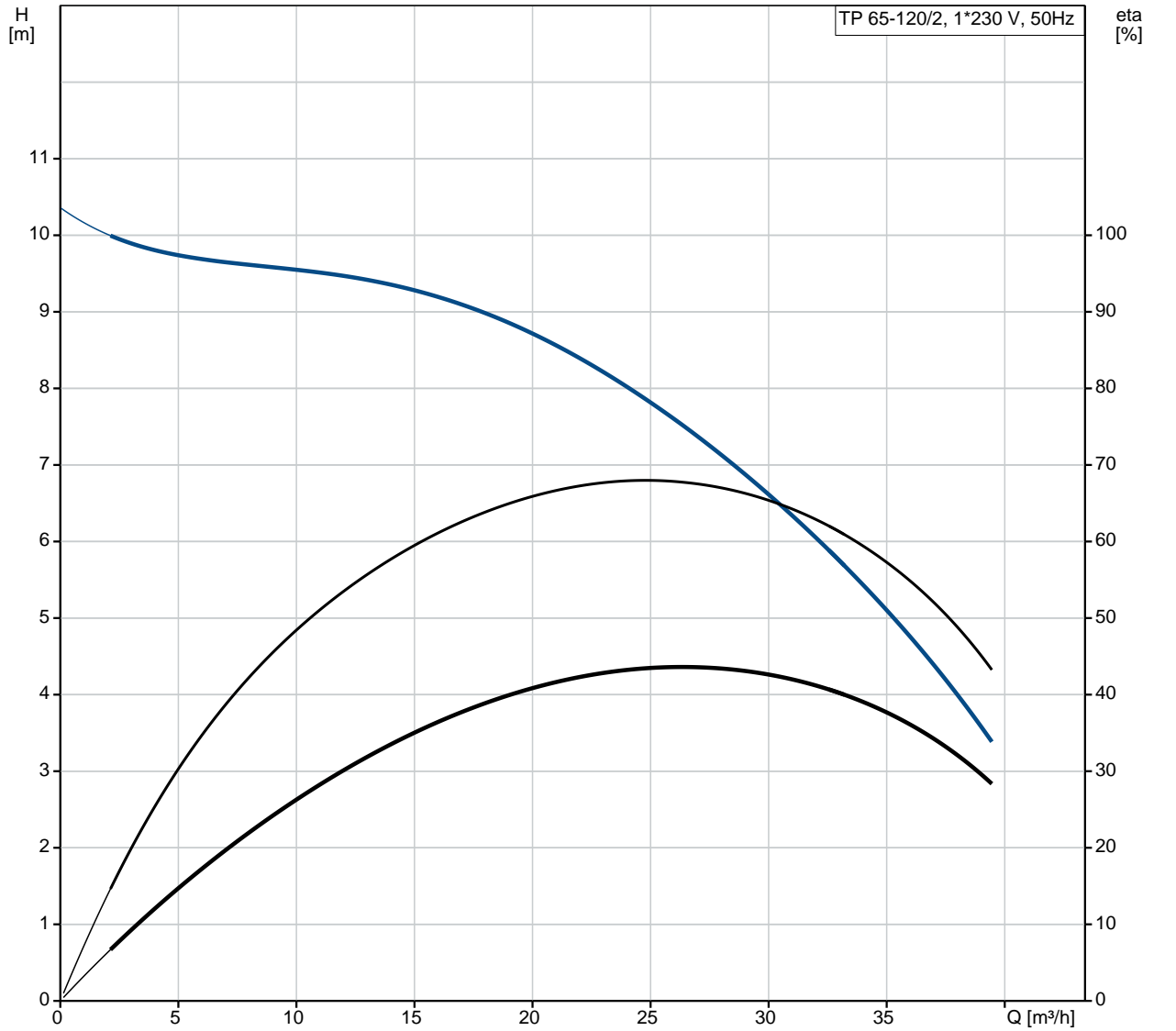
Phone:

Date:

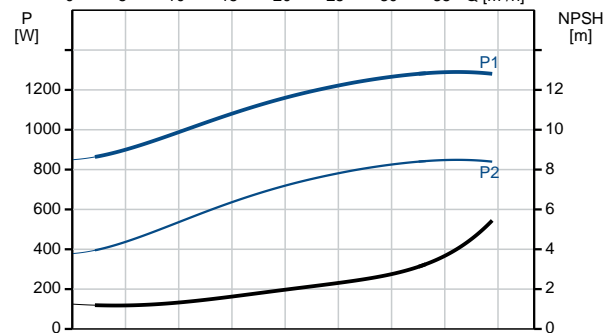
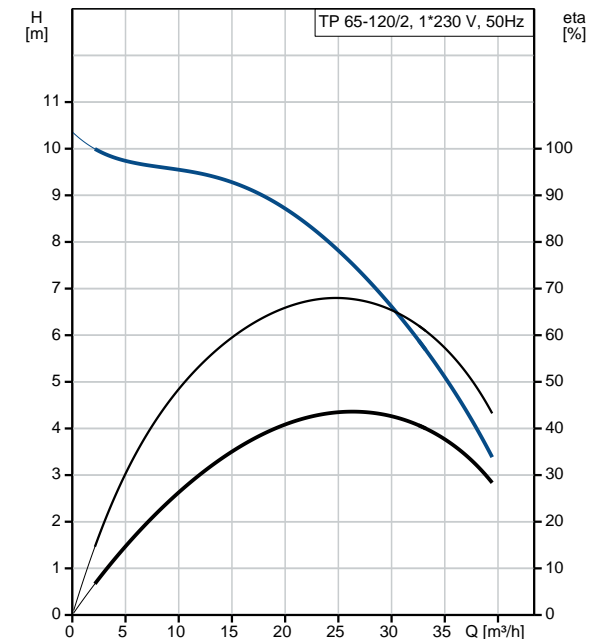
19/12/2017

Position	Qty.	Description
		Rated voltage: 1 x 220-230/240 V Rated current: 7,40/6,70 A Starting current: 390 % Cos phi - power factor: 0,98/0,99 Rated speed: 2770 rpm Motor efficiency at full load: 73-71 % Number of poles: 2 Enclosure class (IEC 34-5): 55 Dust/Jetting Insulation class (IEC 85): F  <b>Others:</b> Minimum efficiency index, MEI : 0.59 ErP status: EuP Standalone/Prod. Net weight: 42.6 kg Gross weight: 46.2 kg Shipping volume: 0.16 m <sup>3</sup>

## 98830721 TP 65-120/2 50 Hz



Description	Value
<b>General information:</b>	
Product name:	TP 65-120/2 A-F-A-BQQE
Product No:	98830721
EAN number:	5712602026627
<b>Technical:</b>	
Speed for pump data:	2880 rpm
Rated flow:	25.1 m <sup>3</sup> /h
Rated head:	8.16 m
Head max:	120 dm
Actual impeller diameter:	91 mm
Primary shaft seal:	BQQE
Curve tolerance:	ISO9906:2012 3B
Pump version:	A
Model:	A
<b>Materials:</b>	
Pump housing:	Cast iron EN-JL1040 ASTM A48-40 B
Impeller:	Stainless steel DIN W.-Nr. 1.4301 AISI 304
Material code:	A
<b>Installation:</b>	
Range of ambient temperature:	-30 .. 40 °C
Maximum operating pressure:	10 bar
Flange standard:	DIN
Connect code:	F
Pipe connection:	DN 65
Pump inlet:	DN 65
Pump outlet:	DN 65
Pressure rating:	PN 6/10
Port-to-port length:	340 mm
Flange size for motor:	FT115
<b>Liquid:</b>	
Pumped liquid:	Water
Liquid temperature range:	-25 .. 120 °C
Liquid temperature during operation:	20 °C
Density:	998.2 kg/m <sup>3</sup>
<b>Electrical data:</b>	
Motor type:	90SB
IE Efficiency class:	NA
Rated power - P2:	1.1 kW
Power (P2) required by pump:	1.1 kW
Mains frequency:	50 Hz
Rated voltage:	1 x 220-230/240 V
Rated current:	7,40/6,70 A
Starting current:	390 %
Cos phi - power factor:	0,98/0,99
Rated speed:	2770 rpm
Motor efficiency at full load:	73-71 %
Number of poles:	2
Enclosure class (IEC 34-5):	55 Dust/Jetting
Insulation class (IEC 85):	F
Motor protec:	PTO





Company name:

Created by:

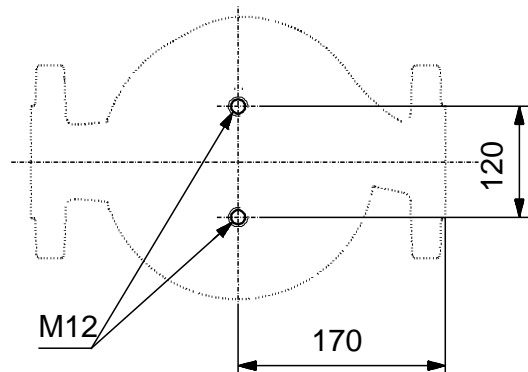
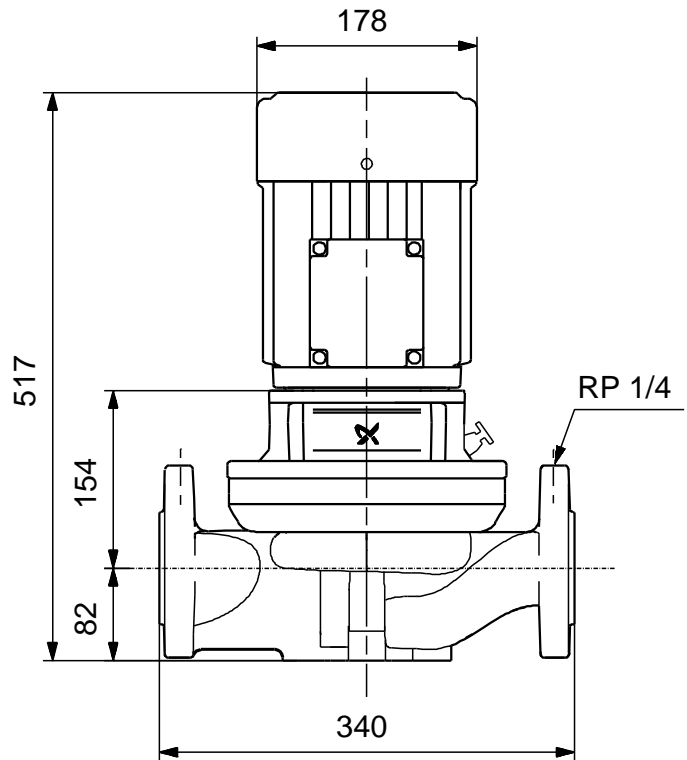
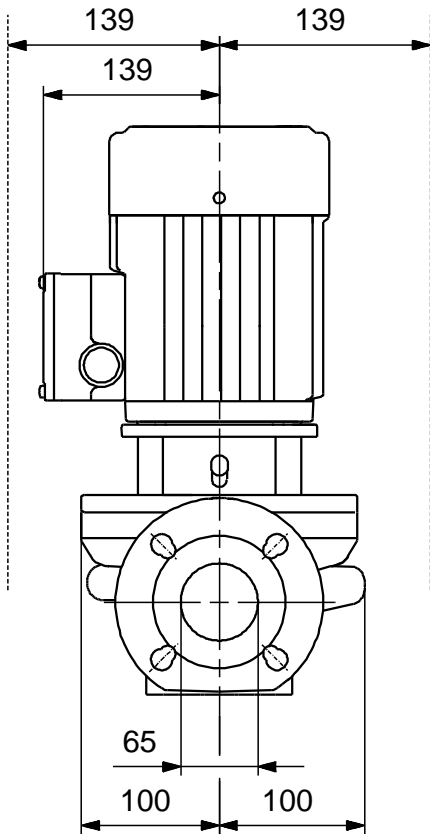
Phone:

Date:

19/12/2017

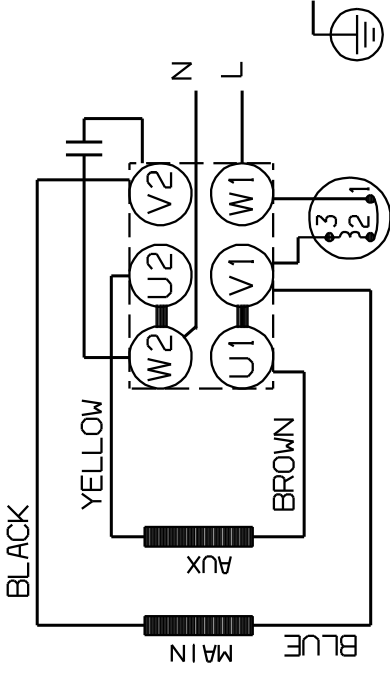
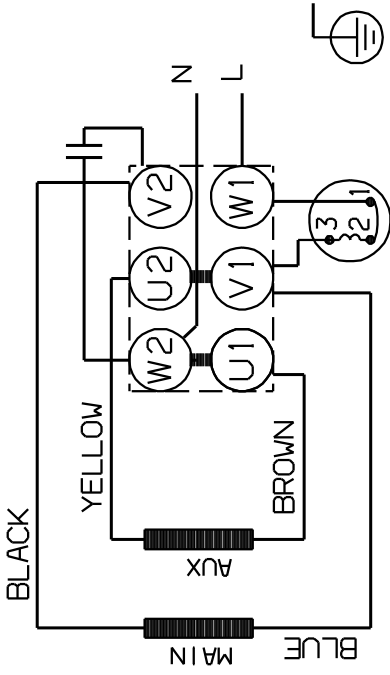
Description	Value
Motor No:	85215705
<b>Others:</b>	
Minimum efficiency index, MEI :	0.59
ErP status:	EuP Standalone/Prod.
Net weight:	42.6 kg
Gross weight:	46.2 kg
Shipping volume:	0.16 m <sup>3</sup>

**98830721 TP 65-120/2 50 Hz**



Note! All units are in [mm] unless others are stated.  
Disclaimer: This simplified dimensional drawing does not show all details.

## 98830721 TP 65-120/2 50 Hz

DIRECTION OF ROTATION	
DIRECTION OF ROTATION	
HIGH VOLTAGE	LOW VOLTAGE

Note! All units are in [mm] unless others are stated.