
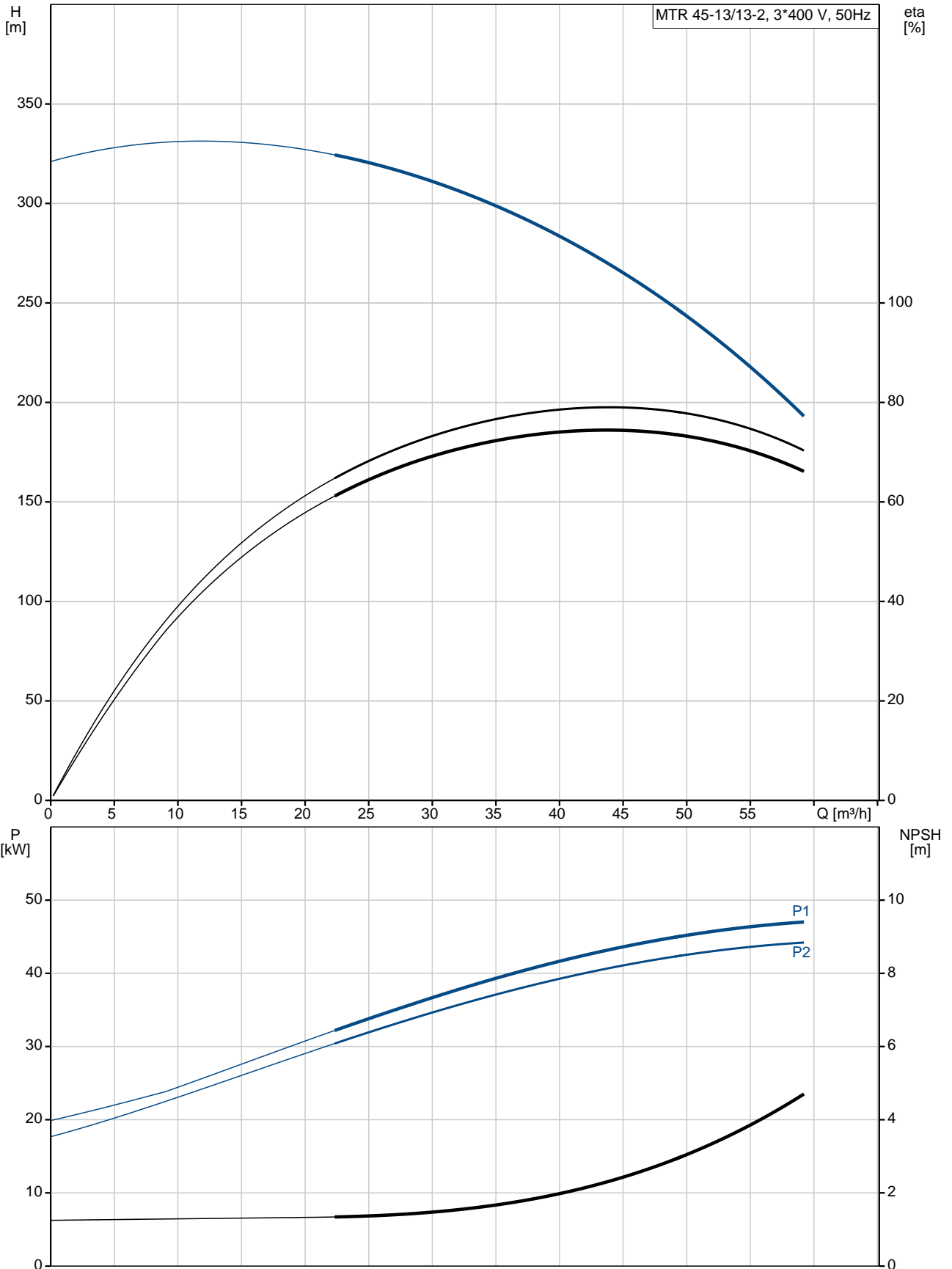


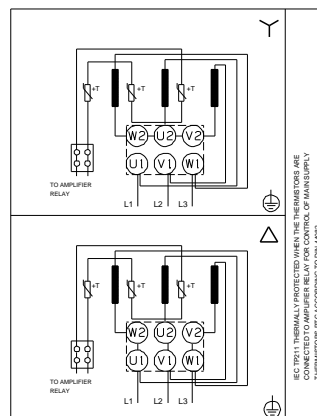
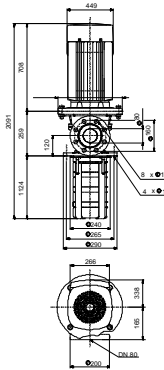
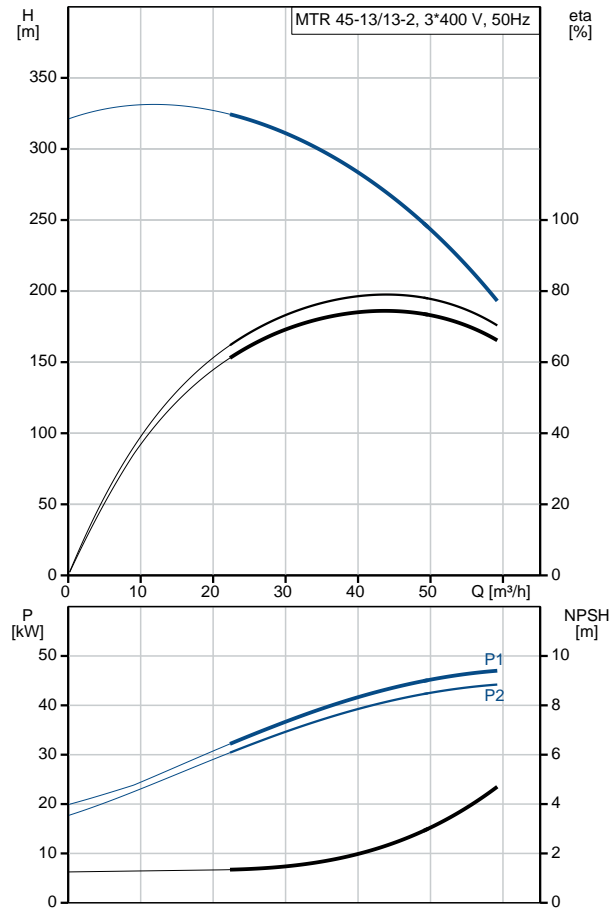
Qty.	Description
1	<p data-bbox="199 338 539 367"><b>MTR 45-13/13-2 A-F-A-HUUV</b></p>  <p data-bbox="199 660 469 689">Product No.: <a href="#">98513720</a></p> <p data-bbox="199 719 1171 779">Multistage, immersible, self-priming, centrifugal pump for vertical installation in tanks etc. The pump head and base are in cast iron – all other wetted parts are in stainless steel. The pump has the following characteristics:</p> <ul data-bbox="240 808 1139 927" style="list-style-type: none"> <li>• Installation length according to DIN 5440.</li> <li>• Impellers, intermediate chambers and spline shaft are made of Stainless steel.</li> <li>• Mechanical shaft seal according to EN 12756.</li> <li>• Power transmission via cast-iron split coupling.</li> </ul> <p data-bbox="199 956 1187 985">A cartridge shaft seal ensures high reliability, safe handling, and easy access and service.</p> <p data-bbox="199 1077 639 1137">Controls: Frequency converter: NONE</p> <p data-bbox="199 1167 778 1317"><b>Liquid:</b> Pumped liquid: Water Liquid temperature range: -10 .. 90 °C Selected liquid temperature: 20 °C Density at selected liquid temperature: 998.2 kg/m<sup>3</sup></p> <p data-bbox="199 1346 820 1608"><b>Technical:</b> Pump speed on which pump data are based: 2960 rpm Rated flow: 45 m<sup>3</sup>/h Rated head: 262.6 m Chambers: 13 Drainage back to tank: N Pump orientation: Vertical Code for shaft seal: HUUV Curve tolerance: ISO9906:2012 3B</p> <p data-bbox="199 1637 810 1845"><b>Materials:</b> Pump head: Cast iron EN 1561 EN-GJL-200 ASTM A48-25B Impeller: Stainless steel EN 1.4301 AISI 304</p> <p data-bbox="199 1874 730 2085"><b>Installation:</b> Maximum ambient temperature: 55 °C Maximum operating pressure: 25 bar Max pressure at stated temp: 25 bar / 90 °C Type of connection: DIN Size of outlet connection: DN 80 Immersion depth: 1124 mm</p>

Qty.	Description
	Pressure rating for pipe connection: PN 40 Flange size for motor: FF400  <b>Electrical data:</b> Motor standard: IEC Motor type: SIEMENS IE Efficiency class: IE3 Rated power - P2: 45 kW Mains frequency: 50 Hz Rated voltage: 3 x 380-420D/660-725Y V Rated current: 81,0-74,0/47,0-43,0 A Starting current: 690-690 % Cos phi - power factor: 0.89 Rated speed: 2960 rpm Efficiency: IE3 94,0% Motor efficiency at full load: 94.0-94.0 % Motor efficiency at 3/4 load: 94.5-94.5 % Motor efficiency at 1/2 load: 94.4-94.4 % Number of poles: 2 Enclosure class (IEC 34-5): 55 Dust/Jetting Insulation class (IEC 85): F Motor No: 81U15336  <b>Others:</b> Terminal box position: 6 Minimum efficiency index, MEI : 0.70 Net weight: 410 kg Gross weight: 468 kg Shipping volume: 0.81 m <sup>3</sup> Country of origin: HU Custom tariff no.: 84137075

## 98513720 MTR 45-13/13-2 A-F-A-HUUV 50 Hz



Description	Value
<b>General information:</b>	
Product name:	MTR 45-13/13-2 A-F-A-HUUV
Product No:	98513720
EAN number:	5711496394423 5711496394423
<b>Technical:</b>	
Pump speed on which pump data are based:	2960 rpm
Rated flow:	45 m <sup>3</sup> /h
Rated head:	262.6 m
Chambers:	13
Impellers:	13
Number of reduced-diameter impellers:	2
Drainage back to tank:	N
Pump orientation:	Vertical
Code for shaft seal:	HUUV
Curve tolerance:	ISO9906:2012 3B
Pump version:	A
Model:	B
<b>Materials:</b>	
Pump head:	Cast iron EN 1561 EN-GJL-200 ASTM A48-25B
Impeller:	Stainless steel EN 1.4301 AISI 304
Material code:	A
<b>Installation:</b>	
Maximum ambient temperature:	55 °C
Maximum operating pressure:	25 bar
Max pressure at stated temp:	25 bar / 90 °C
Type of connection:	DIN
Size of outlet connection:	DN 80
Immersion depth:	1124 mm
Pressure rating for pipe connection:	PN 40
Flange size for motor:	FF400
Connect code:	F
<b>Liquid:</b>	
Pumped liquid:	Water
Liquid temperature range:	-10 .. 90 °C
Selected liquid temperature:	20 °C
Density at selected liquid temperature:	998.2 kg/m <sup>3</sup>
<b>Electrical data:</b>	
Motor standard:	IEC
Motor type:	SIEMENS
IE Efficiency class:	IE3
Rated power - P2:	45 kW
Mains frequency:	50 Hz
Rated voltage:	3 x 380-420D/660-725Y V
Rated current:	81,0-74,0/47,0-43,0 A
Starting current:	690-690 %
Cos phi - power factor:	0.89
Rated speed:	2960 rpm
Efficiency:	IE3 94,0%
Motor efficiency at full load:	94.0-94.0 %
Motor efficiency at 3/4 load:	94.5-94.5 %
Motor efficiency at 1/2 load:	94.4-94.4 %





Company name:

Created by:

Phone:

Date:

15/10/2019

Description	Value
Number of poles:	2
Enclosure class (IEC 34-5):	55 Dust/Jetting
Insulation class (IEC 85):	F
Motor protec:	PTC
Motor No:	81U15336
<b>Controls:</b>	
Frequency converter:	NONE
<b>Others:</b>	
Terminal box position:	6
Minimum efficiency index, MEI :	0.70
Net weight:	410 kg
Gross weight:	468 kg
Shipping volume:	0.81 m <sup>3</sup>
Country of origin:	HU
Custom tariff no.:	84137075