
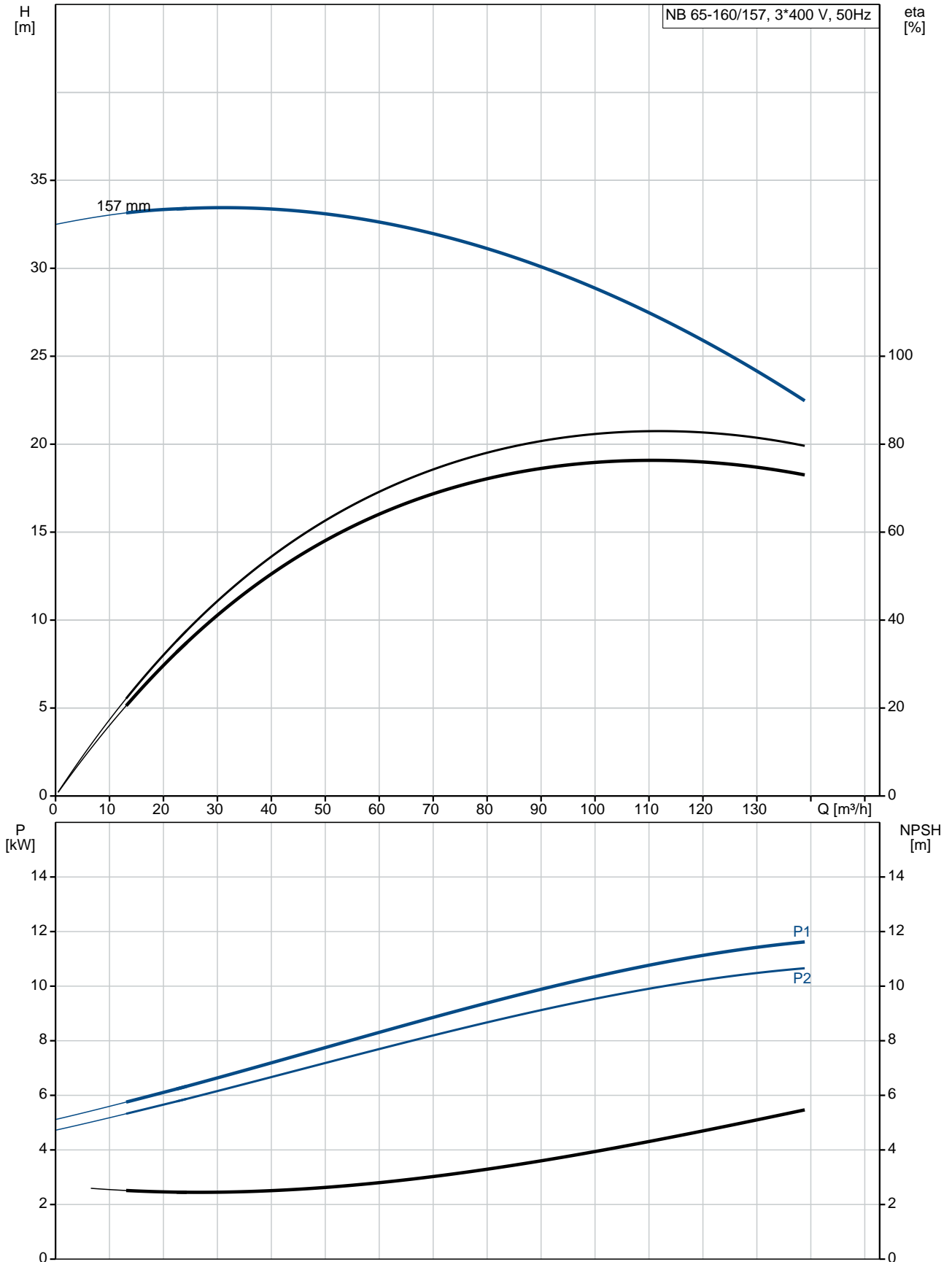


Qty.	Description
1	<p data-bbox="199 342 534 365">NB 65-160/157 ASF2ABQQE</p> <div data-bbox="220 405 566 633">  </div> <p data-bbox="592 629 1077 651" style="text-align: center;">Note! Product picture may differ from actual product</p> <p data-bbox="199 663 470 685">Product No.: 98291563</p> <p data-bbox="199 719 1460 775">Non-self-priming, single-stage, centrifugal volute pump designed according to ISO 5199 with dimensions and rated performance according to EN 733 (10 bar).</p> <p data-bbox="199 808 1460 887">Flanges are PN 16 with dimensions according to EN 1092-2. The pump has an axial suction port, radial discharge port, horizontal shaft and a back pull-out design enabling removal of the motor, motor stool, cover and impeller without disturbing the pump housing or pipework.</p> <p data-bbox="199 898 941 920">The unbalanced rubber bellows seal is according to DIN EN 12756.</p> <p data-bbox="199 925 906 947">The pump is close-coupled to a fan-cooled asynchronous motor.</p> <p data-bbox="199 981 316 1003">Controls:</p> <p data-bbox="199 1010 638 1032">Frequency converter: NONE</p> <p data-bbox="199 1070 288 1093">Liquid:</p> <p data-bbox="199 1099 710 1223">Pumped liquid: Water Liquid temperature range: -25 .. 120 °C Liquid temperature during operation: 20 °C Density: 998.2 kg/m³</p> <p data-bbox="199 1249 327 1272">Technical:</p> <p data-bbox="199 1279 766 1480">Rated flow: 114 m³/h Rated head: 26.52 m Actual impeller diameter: 157 mm Nominal impeller diameter: 160 mm Shaft seal arrangement: Single Code for shaft seal: BQQE Curve tolerance: ISO9906:2012 3B</p> <p data-bbox="199 1518 320 1541">Materials:</p> <p data-bbox="199 1547 734 1839">Pump housing: Cast iron EN-GJL-250 ASTM class 35 Wear ring: Brass Impeller: Cast iron EN-GJL-200 ASTM class 30 Shaft: Stainless steel EN 1.4301 AISI 304</p> <p data-bbox="199 1877 343 1899">Installation:</p> <p data-bbox="199 1906 686 2101">Maximum ambient temperature: 60 °C Maximum operating pressure: 16 bar Pipe connection standard: EN 1092-2 Size of inlet connection: DN 80 Size of outlet connection: DN 65 Pressure rating for pipe connection: PN 16 Pump housing with feet: N</p>

Qty.	Description
	<p>Support block: Y</p> <p>Electrical data:</p> <p>IE Efficiency class: IE3</p> <p>P2: 11 kW</p> <p>Mains frequency: 50 Hz</p> <p>Rated voltage: 3 x 380-415D/660-690Y V</p> <p>Rated current: 20,8-19,8/12,0-11,8 A</p> <p>Starting current: 660-780 %</p> <p>Cos phi - power factor: 0.88-0.84</p> <p>Rated speed: 2940-2950 rpm</p> <p>Efficiency: IE3 91,2%</p> <p>Motor efficiency at full load: 91.2 %</p> <p>Motor efficiency at 3/4 load: 91.8 %</p> <p>Motor efficiency at 1/2 load: 91.3 %</p> <p>Number of poles: 2</p> <p>Enclosure class (IEC 34-5): 55 Dust/Jetting</p> <p>Insulation class (IEC 85): F</p> <p>Others:</p> <p>Minimum efficiency index, MEI $\hat{\alpha}\%$: 0.70</p> <p>Net weight: 144 kg</p> <p>Gross weight: 169 kg</p> <p>Shipping volume: 0.707 m³</p> <p>Country of origin: HU</p> <p>Custom tariff no.: 84137051</p>

98291563 NB 65-160/157 ASF2ABQQE 50 Hz



Description	Value
-------------	-------

General information:

Product name: NB 65-160/157 ASF2ABQQE

Product No: 98291563

EAN number: 5711492591291

Price: 3.335,00 GBP

Technical:

Rated flow: 114 m³/h

Rated head: 26.52 m

Actual impeller diameter: 157 mm

Nominal impeller diameter: 160 mm

Shaft seal arrangement: Single

Shaft diameter: 24 mm

Code for shaft seal: BQQE

Curve tolerance: ISO9906:2012 3B

Pump version: AS

Materials:

Pump housing: Cast iron

EN-GJL-250

ASTM class 35

Wear ring: Brass

Impeller: Cast iron

EN-GJL-200

ASTM class 30

Shaft: Stainless steel

EN 1.4301

AISI 304

Material code: A

Installation:

Maximum ambient temperature: 60 °C

Maximum operating pressure: 16 bar

Pipe connection standard: EN 1092-2

Size of inlet connection: DN 80

Size of outlet connection: DN 65

Pressure rating for pipe connection: PN 16

Pump housing with feet: N

Support block: Y

Connect code: F2

Liquid:

Pumped liquid: Water

Liquid temperature range: -25 .. 120 °C

Liquid temperature during operation: 20 °C

Density: 998.2 kg/m³

Electrical data:

IE Efficiency class: IE3

P2: 11 kW

Mains frequency: 50 Hz

Rated voltage: 3 x 380-415D/660-690Y V

Rated current: 20,8-19,8/12,0-11,8 A

Starting current: 660-780 %

Cos phi - power factor: 0.88-0.84

Rated speed: 2940-2950 rpm

Efficiency: IE3 91,2%

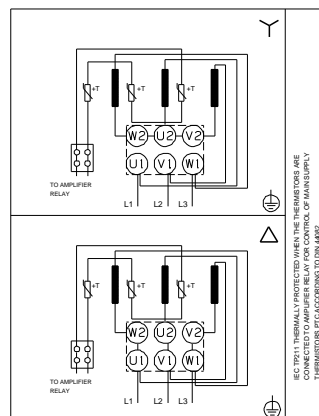
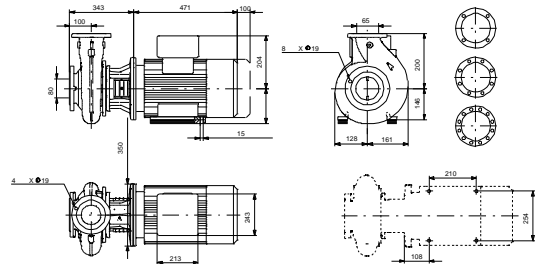
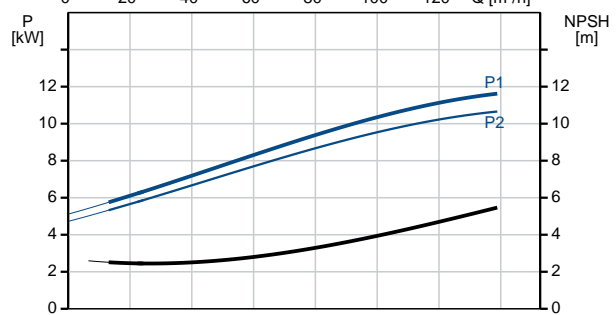
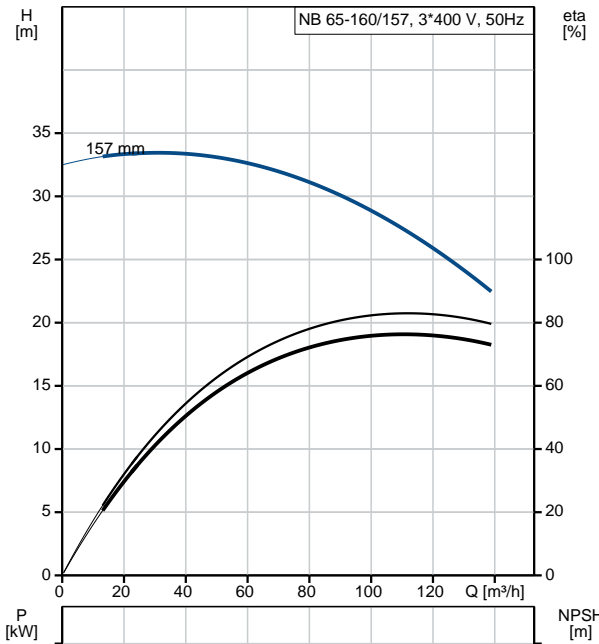
Motor efficiency at full load: 91.2 %

Motor efficiency at 3/4 load: 91.8 %

Motor efficiency at 1/2 load: 91.3 %

Number of poles: 2

Enclosure class (IEC 34-5): 55 Dust/Jetting





Company name:

Created by:

Phone:

Date:

21/03/2019

Description	Value
Insulation class (IEC 85):	F
Motor protec:	PTC
Motor No:	87420028
Mount. design. acc. IEC 34-7:	IM B35
Controls:	
Frequency converter:	NONE
Others:	
Minimum efficiency index, MEI $\eta_{\%}$:	0.70
Net weight:	144 kg
Gross weight:	169 kg
Shipping volume:	0.707 m ³
Country of origin:	HU
Custom tariff no.:	84137051

98291563 NB 65-160/157 ASF2ABQQE 50 Hz

