

Qty. Description

1 CRN 64-4-2 A-F-H-E-HQQE



Product No.: [96692774](#)

Vertical, multistage centrifugal pump with inlet and outlet ports on same the level (inline). Pump materials in contact with the liquid are in high-grade stainless steel. A cartridge shaft seal ensures high reliability, safe handling, and easy access and service. Power transmission is via a rigid split coupling. Pipe connection is via DIN flanges.

The pump is fitted with a 3-phase, fan-cooled asynchronous motor.

Controls:

Frequency converter: NONE

Liquid:

Pumped liquid: Water
 Liquid temperature range: -40 .. 120 °C
 Liquid temperature during operation: 20 °C
 Density: 998.2 kg/m³

Technical:

Pump speed on which pump data are based: 2934 rpm
 Rated flow: 64 m³/h
 Rated head: 74.7 m
 Pump orientation: Vertical
 Shaft seal arrangement: Single
 Code for shaft seal: HQQE
 Approvals on nameplate: CE, EAC, ACS
 Curve tolerance: ISO9906:2012 3B

Materials:

Base: Stainless steel
 EN 1.4408
 AISI 316
 Impeller: Stainless steel
 EN 1.4401
 AISI 316
 Bearing: SIC
 Support bearing: Graflon

Installation:

Maximum ambient temperature: 60 °C
 Maximum operating pressure: 16 bar
 Max pressure at stated temp: 16 bar / 120 °C
 16 bar / -40 °C
 Type of connection: DIN
 Size of inlet connection: DN 100
 Size of outlet connection: DN 100
 Pressure rating for pipe connection: PN 16
 Flange size for motor: FF300

| Qty. | Description |
|------|-------------|
|------|-------------|

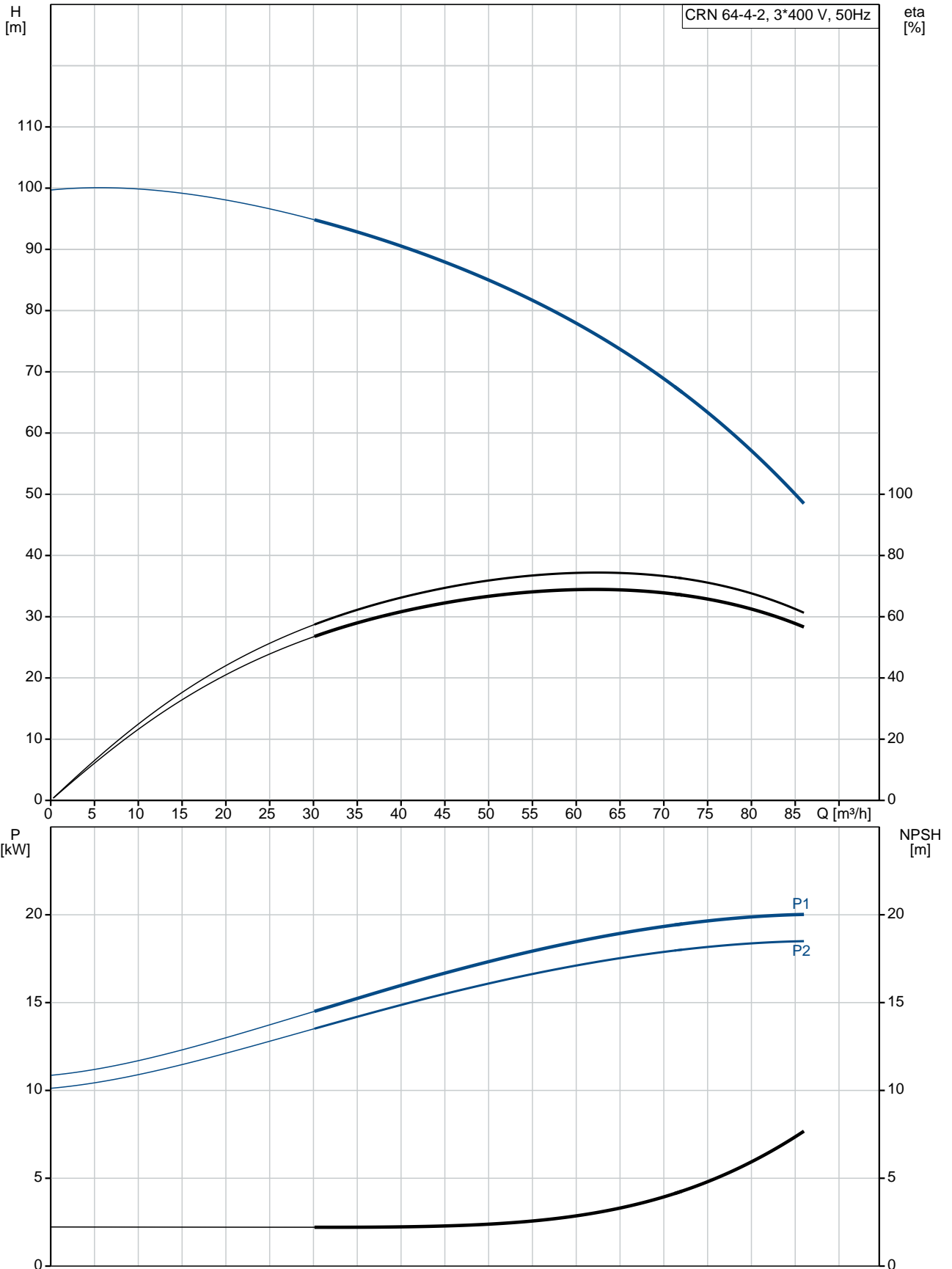
Electrical data:

| | |
|--------------------------------|-------------------------|
| Motor standard: | IEC |
| Motor type: | 160LB |
| IE Efficiency class: | IE3 |
| Rated power - P2: | 18.5 kW |
| Power (P2) required by pump: | 18.5 kW |
| Mains frequency: | 50 Hz |
| Rated voltage: | 3 x 380-415D/660-690Y V |
| Rated current: | 34,5-32,5/20,0-18,8 A |
| Starting current: | 830-980 % |
| Cos phi - power factor: | 0.89-0.85 |
| Rated speed: | 2940-2950 rpm |
| Efficiency: | IE3 92,4% |
| Motor efficiency at full load: | 92.4-92.4 % |
| Motor efficiency at 3/4 load: | 93.2 % |
| Motor efficiency at 1/2 load: | 93.2 % |
| Number of poles: | 2 |
| Enclosure class (IEC 34-5): | 55 Dust/Jetting |
| Insulation class (IEC 85): | F |

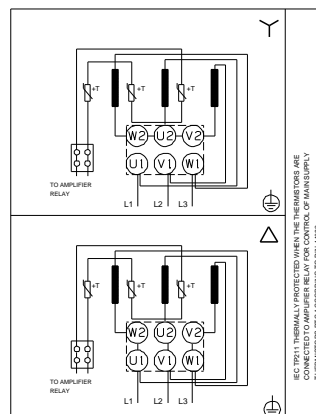
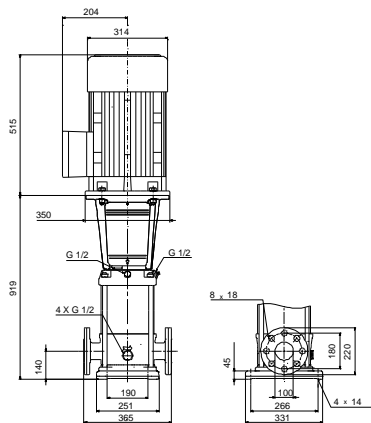
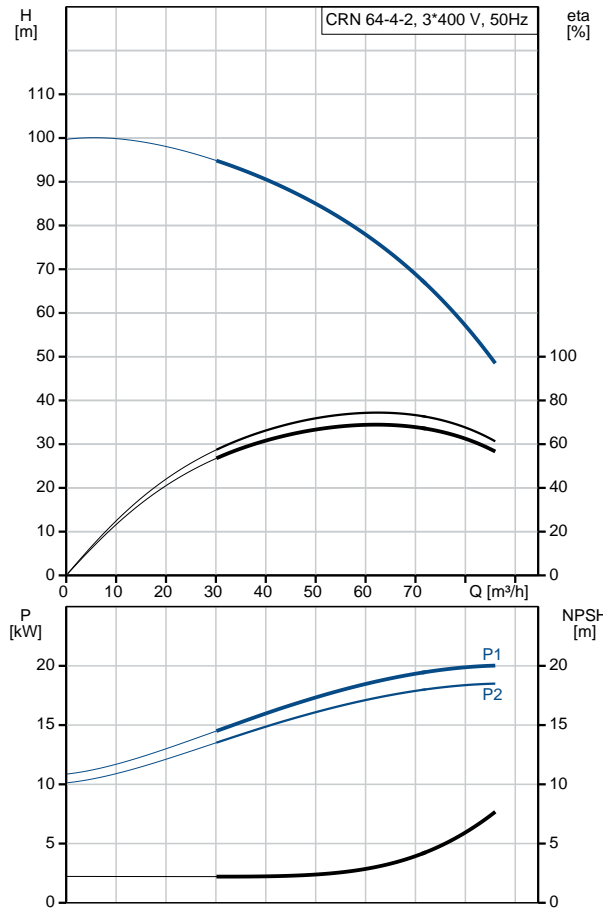
Others:

| | |
|--|----------------------|
| Minimum efficiency index, MEI $\hat{\alpha}\%$: | 0.70 |
| Net weight: | 195 kg |
| Gross weight: | 228 kg |
| Shipping volume: | 0.495 m ³ |
| Country of origin: | GB |
| Custom tariff no.: | 84137075 |

96692774 CRN 64-4-2 A-F-H-E-HQQE 50 Hz



| Description | Value |
|--|--|
| General information: | |
| Product name: | CRN 64-4-2 A-F-H-E-HQQE |
| Product No: | 96692774 |
| EAN number: | 5700837300544 |
| Price: | 8.163,00 GBP |
| Technical: | |
| Pump speed on which pump data are based: | 2934 rpm |
| Rated flow: | 64 m³/h |
| Rated head: | 74.7 m |
| Head max: | 99 m |
| Stages: | 4 |
| Impellers: | 4 |
| Number of reduced-diameter impellers: | 2 |
| Low NPSH: | N |
| Pump orientation: | Vertical |
| Shaft seal arrangement: | Single |
| Code for shaft seal: | HQQE |
| Approvals on nameplate: | CE, EAC, ACS |
| Curve tolerance: | ISO9906:2012 3B |
| Pump version: | A |
| Model: | B |
| Materials: | |
| Base: | Stainless steel EN 1.4408 AISI 316 |
| Impeller: | Stainless steel EN 1.4401 AISI 316 |
| Material code: | H |
| Code for rubber: | E |
| Bearing: | SIC |
| Support bearing: | Graflon |
| Installation: | |
| Maximum ambient temperature: | 60 °C |
| Maximum operating pressure: | 16 bar |
| Max pressure at stated temp: | 16 bar / 120 °C 16 bar / -40 °C |
| Type of connection: | DIN |
| Size of inlet connection: | DN 100 |
| Size of outlet connection: | DN 100 |
| Pressure rating for pipe connection: | PN 16 |
| Flange size for motor: | FF300 |
| Connect code: | F |
| Liquid: | |
| Pumped liquid: | Water |
| Liquid temperature range: | -40 .. 120 °C |
| Liquid temperature during operation: | 20 °C |
| Density: | 998.2 kg/m³ |
| Electrical data: | |
| Motor standard: | IEC |
| Motor type: | 160LB |
| IE Efficiency class: | IE3 |
| Rated power - P2: | 18.5 kW |
| Power (P2) required by pump: | 18.5 kW |
| Mains frequency: | 50 Hz |
| Rated voltage: | 3 x 380-415D/660-690Y V |





Company name:

Created by:

Phone:

Date:

12/03/2019

| Description | Value |
|--|-----------------------|
| Rated current: | 34,5-32,5/20,0-18,8 A |
| Starting current: | 830-980 % |
| Cos phi - power factor: | 0.89-0.85 |
| Rated speed: | 2940-2950 rpm |
| Efficiency: | IE3 92,4% |
| Motor efficiency at full load: | 92.4-92.4 % |
| Motor efficiency at 3/4 load: | 93.2 % |
| Motor efficiency at 1/2 load: | 93.2 % |
| Number of poles: | 2 |
| Enclosure class (IEC 34-5): | 55 Dust/Jetting |
| Insulation class (IEC 85): | F |
| Motor protec: | PTC |
| Motor No: | 85U17528 |
| Controls: | |
| Frequency converter: | NONE |
| Others: | |
| Minimum efficiency index, MEI η_{min} : | 0.70 |
| Net weight: | 195 kg |
| Gross weight: | 228 kg |
| Shipping volume: | 0.495 m ³ |
| Sales region: | Great Britain |
| Country of origin: | GB |
| Custom tariff no.: | 84137075 |