


Qty.	Description
1	<p data-bbox="199 340 518 362">CRN 45-2-2 A-F-H-E-HQQE</p> <div data-bbox="347 383 435 633" style="text-align: center;">  </div> <p data-bbox="199 663 470 685">Product No.: 96536416</p> <p data-bbox="199 719 1460 819">Vertical, multistage centrifugal pump with inlet and outlet ports on same the level (inline). Pump materials in contact with the liquid are in high-grade stainless steel. A cartridge shaft seal ensures high reliability, safe handling, and easy access and service. Power transmission is via a rigid split coupling. Pipe connection is via DIN flanges.</p> <p data-bbox="199 864 933 887">The pump is fitted with a 3-phase, fan-cooled asynchronous motor.</p> <p data-bbox="199 920 311 943">Controls:</p> <p data-bbox="199 954 638 976">Frequency converter: NONE</p> <p data-bbox="199 1010 287 1032">Liquid:</p> <p data-bbox="199 1043 710 1155">Pumped liquid: Water Liquid temperature range: -40 .. 120 °C Liquid temperature during operation: 20 °C Density: 998.2 kg/m³</p> <p data-bbox="199 1189 327 1211">Technical:</p> <p data-bbox="199 1223 821 1458">Pump speed on which pump data are based: 2919 rpm Rated flow: 45 m³/h Rated head: 30.6 m Pump orientation: Vertical Shaft seal arrangement: Single Code for shaft seal: HQQE Approvals on nameplate: CE, EAC, ACS Curve tolerance: ISO9906:2012 3B</p> <p data-bbox="199 1491 319 1514">Materials:</p> <p data-bbox="199 1525 726 1760">Base: Stainless steel EN 1.4408 AISI 316 Impeller: Stainless steel EN 1.4401 AISI 316 Bearing: SIC Support bearing: Graflon</p> <p data-bbox="199 1794 343 1816">Installation:</p> <p data-bbox="199 1827 742 2085">Maximum ambient temperature: 60 °C Maximum operating pressure: 16 bar Max pressure at stated temp: 16 bar / 120 °C 16 bar / -40 °C Type of connection: DIN Size of inlet connection: DN 80 Size of outlet connection: DN 80 Pressure rating for pipe connection: PN 40 Flange size for motor: FF265</p>

Qty. Description

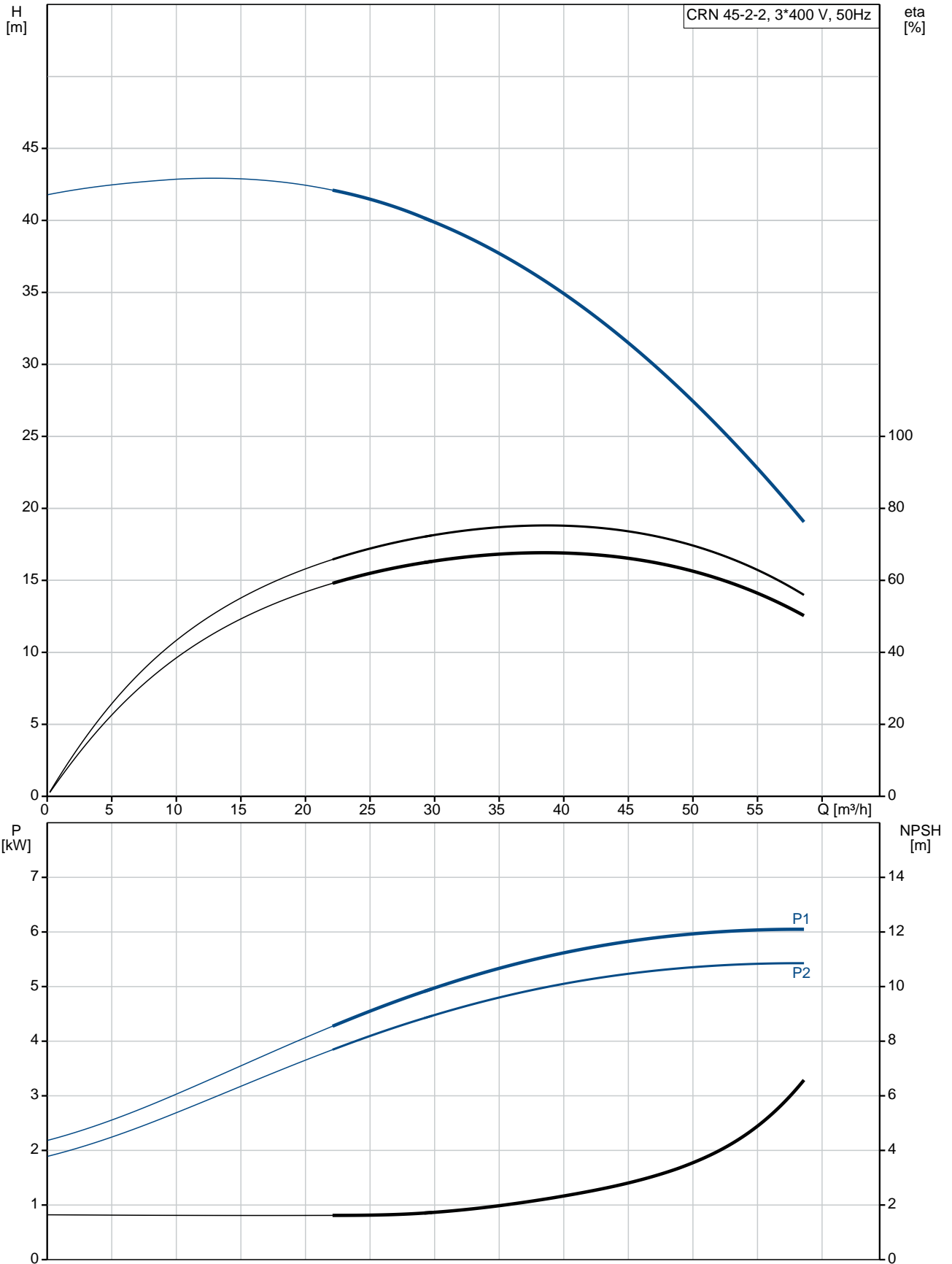
Electrical data:

Motor standard: IEC
Motor type: 132SC
IE Efficiency class: IE3
Rated power - P2: 5.5 kW
Power (P2) required by pump: 5.5 kW
Mains frequency: 50 Hz
Rated voltage: 3 x 380-415D V
Rated current: 11 A
Starting current: 1080-1180 %
Cos phi - power factor: 0.87-0.82
Rated speed: 2920-2940 rpm
Efficiency: IE3 89,2%
Motor efficiency at full load: 89.2 %
Motor efficiency at 3/4 load: 90.0 %
Motor efficiency at 1/2 load: 89.6 %
Number of poles: 2
Enclosure class (IEC 34-5): 55 Dust/Jetting
Insulation class (IEC 85): F

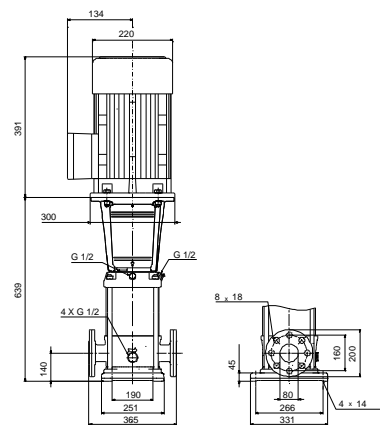
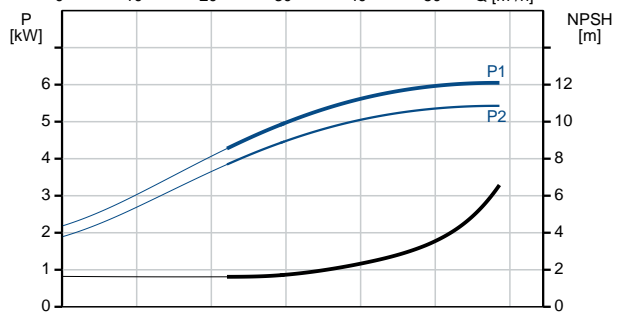
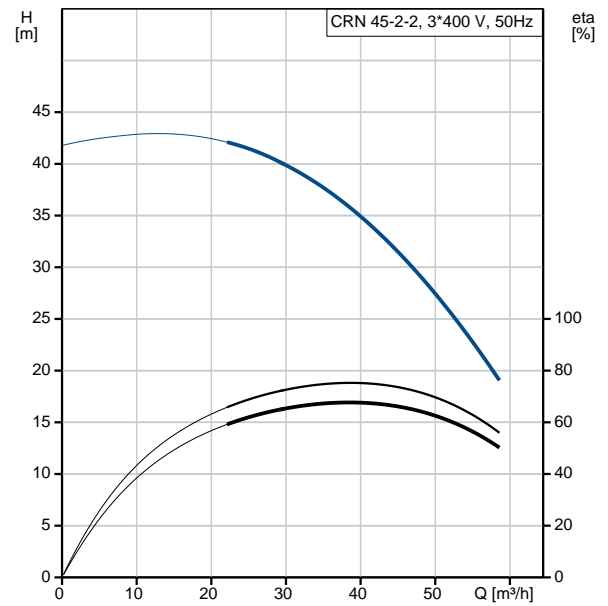
Others:

Minimum efficiency index, MEI $\hat{\alpha}\%$: 0.70
Net weight: 104 kg
Gross weight: 127 kg
Shipping volume: 0.309 m³
Country of origin: GB
Custom tariff no.: 84137075

96536416 CRN 45-2-2 A-F-H-E-HQQE 50 Hz



Description	Value
General information:	
Product name:	CRN 45-2-2 A-F-H-E-HQQE
Product No:	96536416
EAN number:	5700397569610
Price:	4.087,00 GBP
Technical:	
Pump speed on which pump data are based:	2919 rpm
Rated flow:	45 m ³ /h
Rated head:	30.6 m
Head max:	41.4 m
Stages:	2
Impellers:	2
Number of reduced-diameter impellers:	2
Low NPSH:	N
Pump orientation:	Vertical
Shaft seal arrangement:	Single
Code for shaft seal:	HQQE
Approvals on nameplate:	CE, EAC, ACS
Curve tolerance:	ISO9906:2012 3B
Pump version:	A
Model:	B
Materials:	
Base:	Stainless steel EN 1.4408 AISI 316
Impeller:	Stainless steel EN 1.4401 AISI 316
Material code:	H
Code for rubber:	E
Bearing:	SIC
Support bearing:	Graflon
Installation:	
Maximum ambient temperature:	60 °C
Maximum operating pressure:	16 bar
Max pressure at stated temp:	16 bar / 120 °C 16 bar / -40 °C
Type of connection:	DIN
Size of inlet connection:	DN 80
Size of outlet connection:	DN 80
Pressure rating for pipe connection:	PN 40
Flange size for motor:	FF265
Connect code:	F
Liquid:	
Pumped liquid:	Water
Liquid temperature range:	-40 .. 120 °C
Liquid temperature during operation:	20 °C
Density:	998.2 kg/m ³
Electrical data:	
Motor standard:	IEC
Motor type:	132SC
IE Efficiency class:	IE3
Rated power - P2:	5.5 kW
Power (P2) required by pump:	5.5 kW
Mains frequency:	50 Hz
Rated voltage:	3 x 380-415D V
Rated current:	11 A





Company name:

Created by:

Phone:

Date:

12/03/2019

Description	Value
Starting current:	1080-1180 %
Cos phi - power factor:	0.87-0.82
Rated speed:	2920-2940 rpm
Efficiency:	IE3 89,2%
Motor efficiency at full load:	89.2 %
Motor efficiency at 3/4 load:	90.0 %
Motor efficiency at 1/2 load:	89.6 %
Number of poles:	2
Enclosure class (IEC 34-5):	55 Dust/Jetting
Insulation class (IEC 85):	F
Motor protec:	PTC
Motor No:	85U17417
Controls:	
Frequency converter:	NONE
Others:	
Minimum efficiency index, MEI %:	0.70
Net weight:	104 kg
Gross weight:	127 kg
Shipping volume:	0.309 m ³
Sales region:	Great Britain
Country of origin:	GB
Custom tariff no.:	84137075

96536416 CRN 45-2-2 A-F-H-E-HQQE 50 Hz

