

**Qty. Description**

1 CRN 32-1-1 A-F-H-E-HQQE



Product No.: [96536094](#)

Vertical, multistage centrifugal pump with inlet and outlet ports on same the level (inline). Pump materials in contact with the liquid are in high-grade stainless steel. A cartridge shaft seal ensures high reliability, safe handling, and easy access and service. Power transmission is via a rigid split coupling. Pipe connection is via DIN flanges.

The pump is fitted with a 3-phase, fan-cooled asynchronous motor.

**Controls:**

Frequency converter: NONE

**Liquid:**

Pumped liquid: Water  
 Liquid temperature range: -40 .. 120 °C  
 Liquid temperature during operation: 20 °C  
 Density: 998.2 kg/m<sup>3</sup>

**Technical:**

Pump speed on which pump data are based: 2896 rpm  
 Rated flow: 30 m<sup>3</sup>/h  
 Rated head: 10.7 m  
 Pump orientation: Vertical  
 Shaft seal arrangement: Single  
 Code for shaft seal: HQQE  
 Approvals on nameplate: CE, EAC, ACS  
 Curve tolerance: ISO9906:2012 3B

**Materials:**

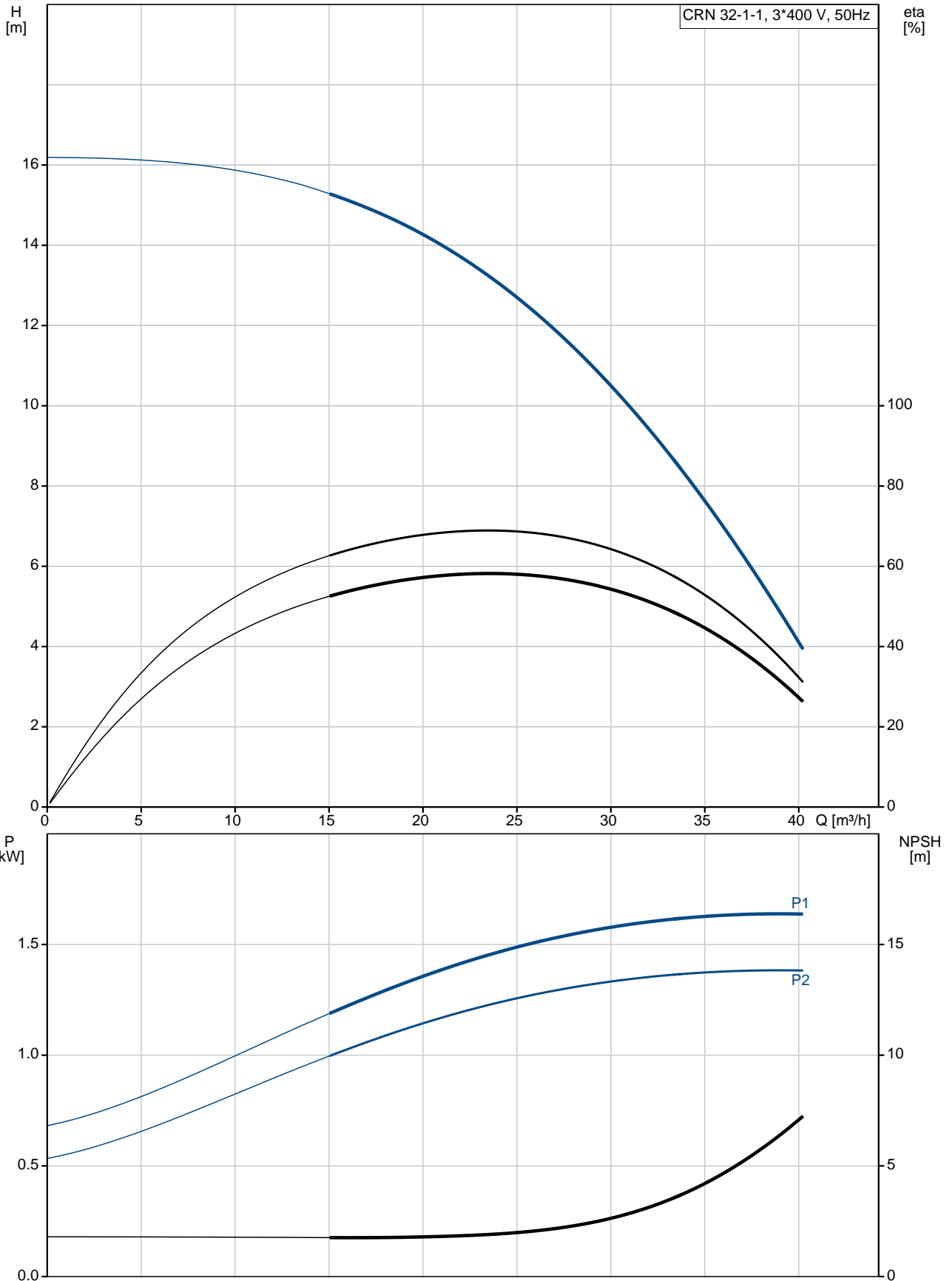
Base: Stainless steel  
 EN 1.4408  
 AISI 316  
 Impeller: Stainless steel  
 EN 1.4401  
 AISI 316  
 Bearing: SIC  
 Support bearing: Graflon

**Installation:**

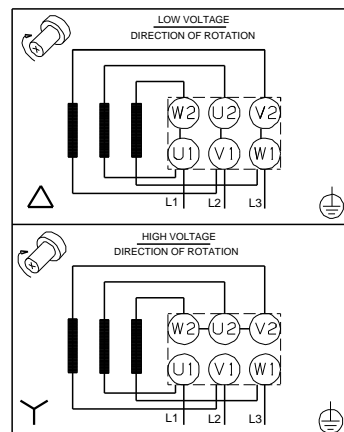
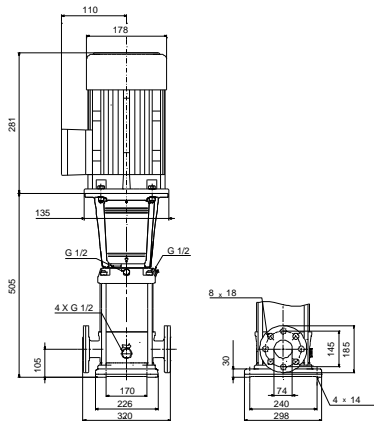
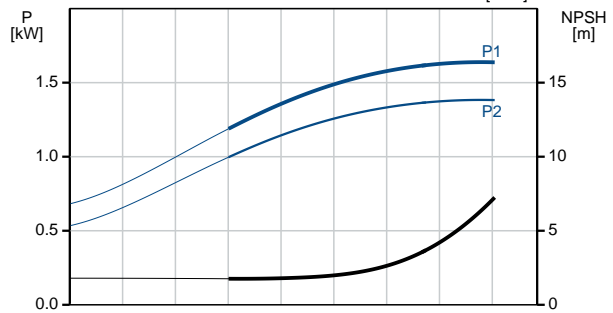
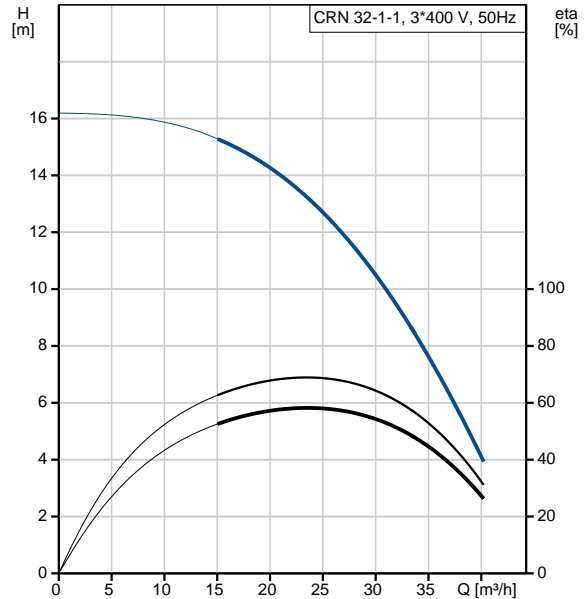
Maximum ambient temperature: 60 °C  
 Maximum operating pressure: 16 bar  
 Max pressure at stated temp: 16 bar / 120 °C  
 16 bar / -40 °C  
 Type of connection: DIN  
 Size of inlet connection: DN 65  
 Size of outlet connection: DN 65  
 Pressure rating for pipe connection: PN 40  
 Flange size for motor: FT115

| Qty. | Description  |
|------|--|
|      | <p><b>Electrical data:</b></p> <p>Motor standard: IEC</p> <p>Motor type: 90SB</p> <p>IE Efficiency class: IE3</p> <p>Rated power - P2: 1.5 kW</p> <p>Power (P2) required by pump: 1.5 kW</p> <p>Mains frequency: 50 Hz</p> <p>Rated voltage: 3 x 220-240D/380-415Y V</p> <p>Rated current: 5.45/3.15 A</p> <p>Starting current: 850-930 %</p> <p>Cos phi - power factor: 0.87-0.82</p> <p>Rated speed: 2890-2910 rpm</p> <p>Efficiency: IE3 84,2%</p> <p>Motor efficiency at full load: 84.2 %</p> <p>Motor efficiency at 3/4 load: 84.5 %</p> <p>Motor efficiency at 1/2 load: 83.1 %</p> <p>Number of poles: 2</p> <p>Enclosure class (IEC 34-5): 55 Dust/Jetting</p> <p>Insulation class (IEC 85): F</p> <p><b>Others:</b></p> <p>Minimum efficiency index, MEI <math>\hat{\alpha}\%</math>: 0.70</p> <p>Net weight: 65.7 kg</p> <p>Gross weight: 88.6 kg</p> <p>Shipping volume: 0.309 m<sup>3</sup></p> <p>Country of origin: GB</p> <p>Custom tariff no.: 84137075</p> |

## 96536094 CRN 32-1-1 A-F-H-E-HQQE 50 Hz



| Description                              | Value                                    |
|--|--|
| <b>General information:</b>              |  |
| Product name:                            | CRN 32-1-1<br>A-F-H-E-HQQE               |
| Product No:                              | 96536094                                 |
| EAN number:                              | 5700397562369                            |
| Price:                                   | 2.713,00 GBP                             |
| <b>Technical:</b>                        |  |
| Pump speed on which pump data are based: | 2896 rpm                                 |
| Rated flow:                              | 30 m <sup>3</sup> /h                     |
| Rated head:                              | 10.7 m                                   |
| Head max:                                | 16 m                                     |
| Stages:                                  | 1  |
| Impellers:                               | 1  |
| Number of reduced-diameter impellers:    | 1  |
| Low NPSH:                                | N  |
| Pump orientation:                        | Vertical                                 |
| Shaft seal arrangement:                  | Single                                   |
| Code for shaft seal:                     | HQQE                                     |
| Approvals on nameplate:                  | CE, EAC, ACS                             |
| Curve tolerance:                         | ISO9906:2012 3B                          |
| Pump version:                            | A  |
| Model:                                   | B  |
| <b>Materials:</b>                        |  |
| Base:                                    | Stainless steel<br>EN 1.4408<br>AISI 316 |
| Impeller:                                | Stainless steel<br>EN 1.4401<br>AISI 316 |
| Material code:                           | H  |
| Code for rubber:                         | E  |
| Bearing:                                 | SIC                                      |
| Support bearing:                         | Graflon                                  |
| <b>Installation:</b>                     |  |
| Maximum ambient temperature:             | 60 °C                                    |
| Maximum operating pressure:              | 16 bar                                   |
| Max pressure at stated temp:             | 16 bar / 120 °C<br>16 bar / -40 °C       |
| Type of connection:                      | DIN                                      |
| Size of inlet connection:                | DN 65                                    |
| Size of outlet connection:               | DN 65                                    |
| Pressure rating for pipe connection:     | PN 40                                    |
| Flange size for motor:                   | FT115                                    |
| Connect code:                            | F  |
| <b>Liquid:</b>                           |  |
| Pumped liquid:                           | Water                                    |
| Liquid temperature range:                | -40 .. 120 °C                            |
| Liquid temperature during operation:     | 20 °C                                    |
| Density:                                 | 998.2 kg/m <sup>3</sup>                  |
| <b>Electrical data:</b>                  |  |
| Motor standard:                          | IEC                                      |
| Motor type:                              | 90SB                                     |
| IE Efficiency class:                     | IE3                                      |
| Rated power - P2:                        | 1.5 kW                                   |
| Power (P2) required by pump:             | 1.5 kW                                   |
| Mains frequency:                         | 50 Hz                                    |
| Rated voltage:                           | 3 x 220-240D/380-415Y<br>V               |





Company name:

Created by:

Phone:

Date:

12/03/2019

| Description                                  | Value                |
|--|----------------------|
| Rated current:                               | 5.45/3.15 A          |
| Starting current:                            | 850-930 %            |
| Cos phi - power factor:                      | 0.87-0.82            |
| Rated speed:                                 | 2890-2910 rpm        |
| Efficiency:                                  | IE3 84,2%            |
| Motor efficiency at full load:               | 84.2 %               |
| Motor efficiency at 3/4 load:                | 84.5 %               |
| Motor efficiency at 1/2 load:                | 83.1 %               |
| Number of poles:                             | 2                    |
| Enclosure class (IEC 34-5):                  | 55 Dust/Jetting      |
| Insulation class (IEC 85):                   | F                    |
| Motor protec:                                | NONE                 |
| Motor No:                                    | 85U05906             |
| <b>Controls:</b>                             |                      |
| Frequency converter:                         | NONE                 |
| <b>Others:</b>                               |                      |
| Minimum efficiency index, MEI $\eta_{min}$ : | 0.70                 |
| Net weight:                                  | 65.7 kg              |
| Gross weight:                                | 88.6 kg              |
| Shipping volume:                             | 0.309 m <sup>3</sup> |
| Sales region:                                | Great Britain        |
| Country of origin:                           | GB                   |
| Custom tariff no.:                           | 84137075             |

## 96536094 CRN 32-1-1 A-F-H-E-HQQE 50 Hz

